

Intrexx Professional

Intrexx Compact

RELEASE 5.2



New Features

Copyright

This document is in all its parts protected by copyright. All rights are reserved, especially the right of translation, presentation, reproduction, and duplication.

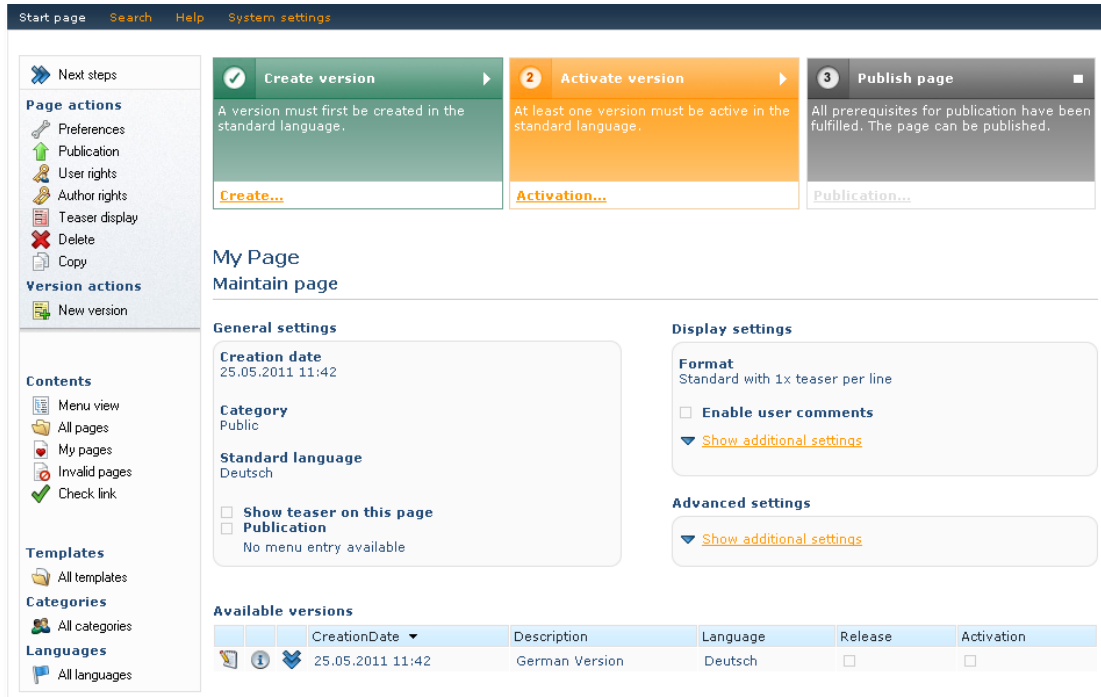
Regardless of the accuracy of the text, images, and programs GmbH, neither author, publisher, or translator may take judicial or other responsibility for possible errors and their consequences.

The conventional names, trade names, product designations, etc. reproduced in this work may, even without special designation, be trademarks, and as such may be subject to legal regulations.

Applications

CMS Studio 2

With the new *Intrex CMS Studio 2.0* (available as option, subject to additional charge), you will be able to quickly, easily and securely create freely laid out pages for your portal, manage them, and publish them anywhere in your portal.



All contents can be created in multiple languages. In addition, you have the ability to keep a seamless history of edits.

Here you will see an overview of the properties and functions of the application:

Content Editor	Rich text editor TinyMCE
Intuitive user interface	The individual pages can be administered either via a page tree or via lists and tables.
Configurable user interface	Adjustable user interface for authors. Via the Intrex Application Designer, all kinds of individual views can be defined.
History	Unrestricted history
Copying pages	Copying all kinds of pages is possible
Copying versions	Copying versions is possible in any way required
Page previewing	Preview for language variants of pages can be displayed
Administration of backend users/groups	Restriction of activities for backend users/groups. Simplified through already defined user groups
Template management	Creation and administration of templates for implementation of a style guide
CSS styled content	Styles through CSS
Dynamic menu	The entire menu structure and the placing of pages, including

	rights, will be made comfortably possible via drag & drop.
Content approval	Workflow lifecycle, which makes a new product required to be checked by a reviewer before it is released. The release process can be adjusted for individual requirements through various possibilities for configuration.
Permissions	Administration of rights for authors and editors, as well as read rights for the users of the portal.
Versioning	The version of a page (or language version) can be saved and then restored at a later point in time. Versions can be created, edited, and exchanged with the published version simply with a mouse click.
Multi-language support	<p>Multilingual contents. By creating various language versions, multilingual contents can be comfortably administered.</p> <p>Single-page tree: A page is assigned any number of language versions. The publication takes place through the page (one-time publication of all language variants).</p> <p>Furthermore, a default language can be defined for a page, so that portal users that do not have their desired language variant available to them will be able to view the variants in the default language as an alternative.</p>
Display of pages	Manual or time-controlled.
User interaction	<p>Users can comment on articles or forward them to a friend via eMail.</p> <p>Administrators can archive the articles or „hide“ them from the users.</p>
Search	<p>The CMS system is fully integrated into the full-text search in Intrexx. All contents will be fully indexed and can be correspondingly discovered.</p> <p>When a search occurs, the read rights will be also be taken into account, as well as all other page properties (standard language settings, validity), the language settings of the users, and special boost settings for the keywords.</p> <p>Naturally, the keywords can be saved in multiple languages as well.</p>
Menu	Creation of menus and menu entries. Structuring of the menus and their entries (hierarchy), independent of the article structure. Automatic creation of breadcrumbs (page / hierarchy path) for simplified navigation.
Assistants	Directly integrated „next steps“ show beginners as well the necessary actions to successfully publish a page.
Categories	Through the categories that are assigned to the pages, initial rights can be saved for authors and readers. These rights will be automatically applied for new pages. Furthermore, various release teams can be defined for the categories. Through this categorization, an assignment of the pages will occur that are to be shown as teasers.

Teasers

Teachers make the reader aware of following pages. For each page that displays the teasers, the display of teasers can be defined through numerous possible settings. Filter possibilities are also available here. Teasers can be saved in multiple languages.

Datapicker for mobile end devices

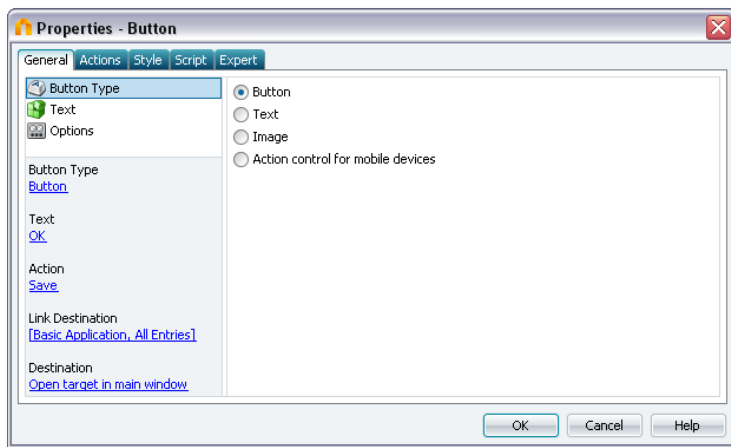
The popular datapicker functionality (form completion help) can now also be set for mobile end devices (iPhone, Android, devices with WebKit browsers).

JavaScript integration for mobile end devices

With an internal JavaScript integration, it is now possible via the Application Designer to create and edit an individual JavaScript file specifically for use in mobile end devices. A manual integration on the server is no longer necessary.

Button

The comprehensive button dialog *General Properties* has been completely restructured for a better overview.



Display of images with buttons or image selection

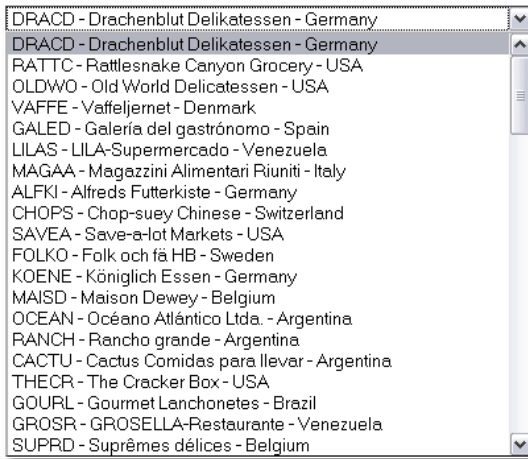
With the new setting to *rotate rotated images*, positioning information, such as that from images that have been set sideways, will be evaluated, rotating images if required.

With *adjust for aspect ratio*, the width and height of the image will be adjusted for the aspect ratio of the button.

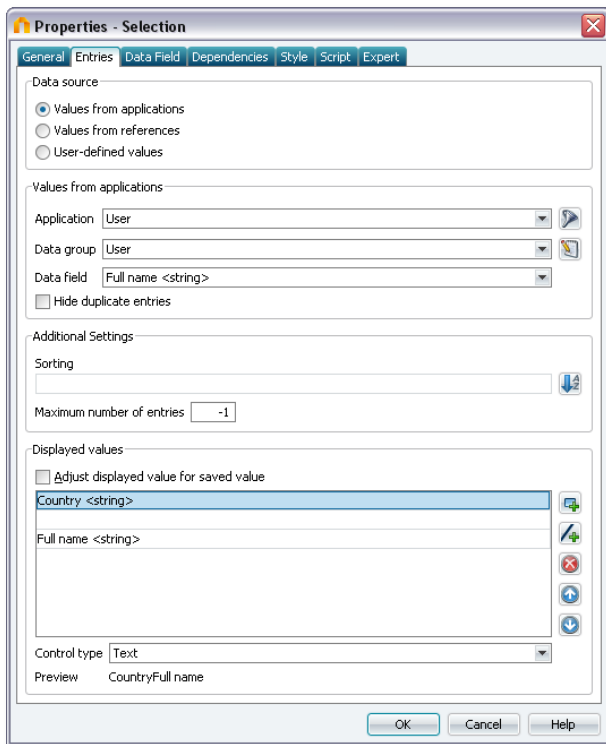
Optimize (reduce) file size for thumbnails causes the file size to be reduced in order to provide for faster loading times for the application page.

Selection list

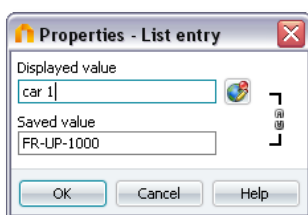
Multiple values can now be shown in the selection list and separated with many kinds of separators, such as in the format Customer Number – Company – Country.



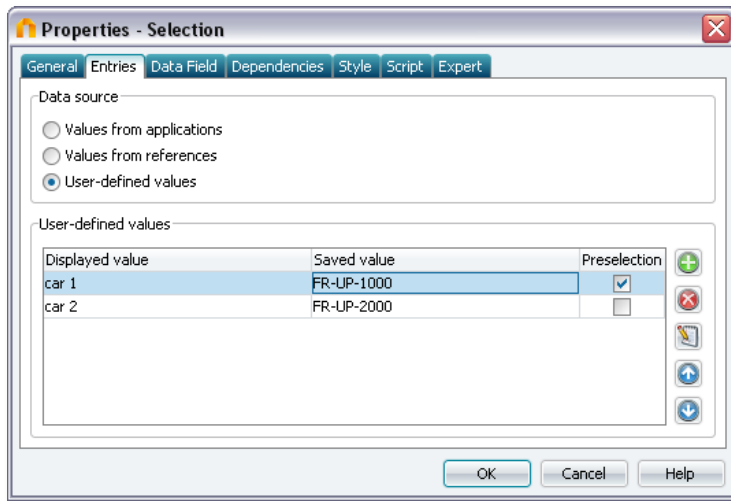
The value to be saved can be defined fully independently from this, meaning that in the example named above, you can save the location or the telephone number, whereas customer number, company, and country will be shown in the selection list. This functionality is available to you for values from applications and values from references.



User-defined entries can now be entered in multiple languages.



The possibility is also available here to enter a saved value differing from the displayed value.



The *User values* option has been removed. All user values can be taken directly from the Users application as entries with the setting *Values from application*.

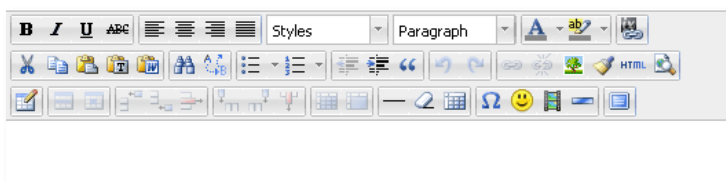
Dynamic view

This new view control possesses essentially the same functions as you can find in the new selection list. Here as well, you can show values that differ from the saved value. Multiple values can be shown here separated with separators.

ANATR - Ana Trujillo Emparedados y helados - Mexico

Text field editor

The text field can now be switched to a new editor in editor mode: *TinyMCE*.



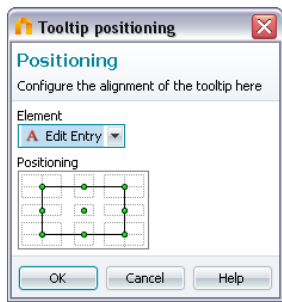
This editor can very easily be configured via the properties dialog. If applications with text fields are imported from an older version of Intrexx, you will automatically be given the offer to select between the new editor and the original editor in use, *FCKEdit*, in a compatibility mode. You can switch between both editors and compare the results in the end device.

Path navigation for tree

For the tree, there is now the possibility to set up a path navigation for both edit and view elements. In this way, you can choose to navigate through your tree structure via the tree itself, or via the path entry in this new element.

Tooltip options

A tooltip can now be aligned relative to another element of your choice on the page. Via a visual settings dialog, the positioning of the tooltip can be exactly defined.



With this option, completely new types of application layouts can be implemented:

- **Simulated tabs**
Tooltips will always be shown in the same place within a page upon button click
- **Additional information**
Tooltips can show additional information on specific elements. By aligning the tooltip to any element on a page, this can always show up at a fixed position within the page.

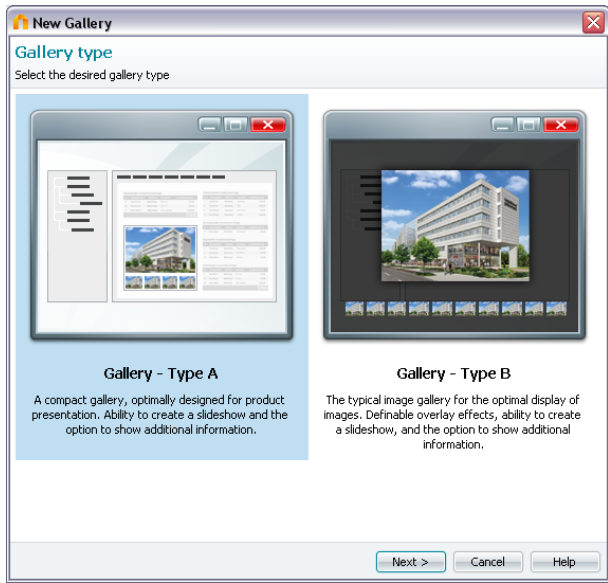
Groups

If elements are highlighted in the workspace, the new context menu item *Group hidden* can now be selected. Doing so will cause all elements that are grouped in this way to no longer be shown in the end device. Hidden groups will be displayed in the Application Designer with hash marks around them.



Image Gallery

With the gallery, you can integrate image galleries into your portal applications quite easily.



Here you have the choice between two types of gallery:

Gallery – type A



The gallery – type A is a compact gallery that is optimally designed for product presentations. The images can be shown in a slideshow. Additional information can be shown by clicking on an image.

Gallery – type B



The gallery – type B is the typical image gallery for the optimal display of the images. Here you have the ability to define overlay effects. Here as well, you have the ability to display in a slideshow and to show additional information.

Search

In the search configuration, it is now possible to define for individual fields whether these should influence the weighting of hits in the search. In this way, results from specific applications will always be shown in the first places in the global search. In this way, the number of results of the search can be individually influenced.

This allows, for example, for hits in the user database to be given a high value. This would have the result that such hits will always be shown at the top when searching for a user.

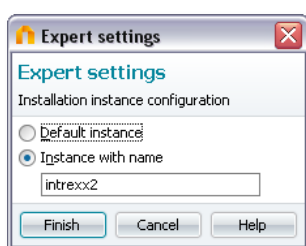
Sortable List

The order of entries in the sortable list can be changed however you wish in the end device via drag & drop.

Setup

Parallel installation

In the advanced settings of the setup program, you have the ability to distinguish between instances of Intrexx by name.



This will allow you to install and administer multiple versions of Intrexx on the same system.

Supervisor port

The communication port of the supervisor service can also now be defined via a setup dialog.

Portals

Installation path of a portal

When creating the portal, an alternative portal path can be created. Through this method, the individual portals must no longer necessarily be located in the Intrexx installation directory, but rather may, for example, be swapped out to a data directory.

Processes

End process action

With this action, the possibility now exists to end all following branches of the event handling, or to end the process for all data records for a global data group timer.

eMail configuration

eMail actions in processes with recipients from a data group will now also process longtext fields with values from multiple selections and distribution list control.

User switch action

In the user switch action, data can now also be pulled up from the processing context, from session values, request values or system data groups. This can be especially interesting, for example, for approval processes, in which with the help of a preloaded Groovy script, the process can dynamically jump into the role of a specific user.

Adapters

Office Integration

Setup and look of the Office Integration have been revised. If a proxy is in use, it can be entered in the settings directly or already in the setup process.

Microsoft Exchange 2010

With the Microsoft Exchange Business Adapter, you will already be prepared for the 2010 version as well.

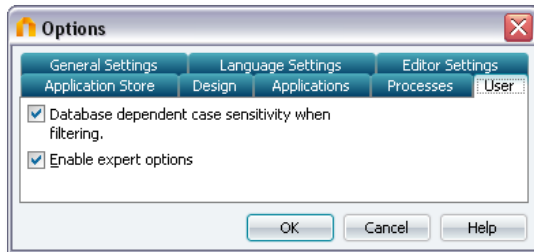
Abacus

The new Business Adapter for *ABACUS Business Software* is now available. This adapter is available to you free of charge, and enables the fast and easy integration of data for the widely used ERP software from ABACUS in your web applications and processes.

General

Options

There now also exists the possibility in the *Users* module to switch to the expert mode.



With it, the field lengths of objects can be changed in the Schemes Manager. In addition, it allows case sensitivity when filtering to be influenced.