

ix Intrexx Xtreme on Windows Server 2008


Preface:

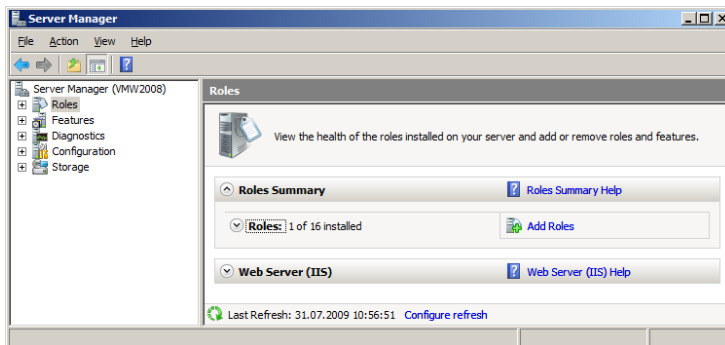
In order to run Intrexx Xtreme on a Windows Server 2008 it is only necessary to install and configure the Internet Information Server IIS. Once IIS has been installed, please configure it as follows.



(Alternatively Tomcat Webserver can be used as Webserver instead of IIS. There is no need to configure the Tomcat Webserver, it must only be selected during the Intrexx Xtreme setup!)

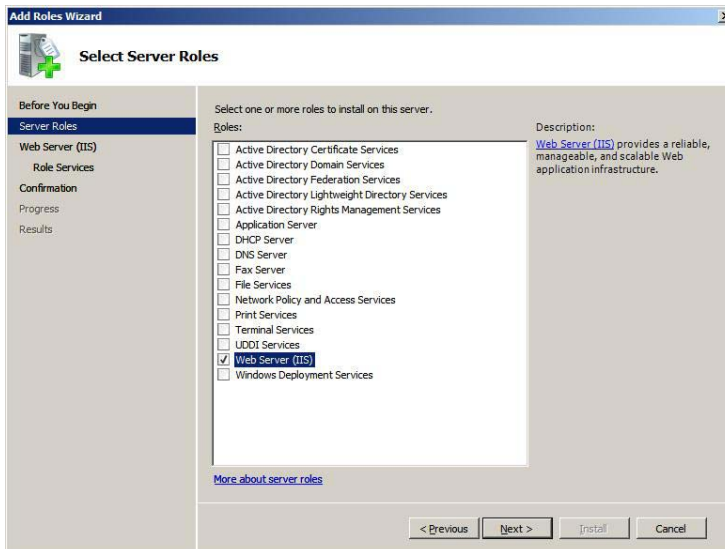
Solution:

Use the following settings to configure IIS in order to support Intrexx Xtreme.

Open the server manager and click on  *Roles*.

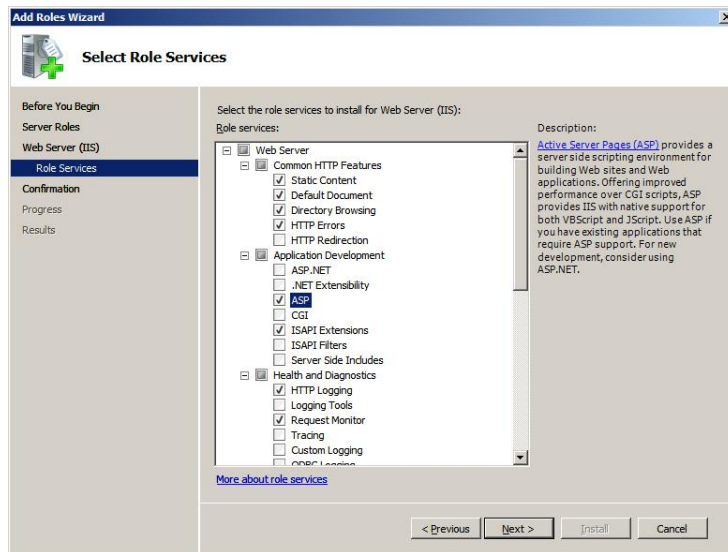


Choose  *Add Roles*. In the following Add Roles Wizard you can select one or more roles to be installed. Select the role *Web Server (IIS)* and click  *Next*.



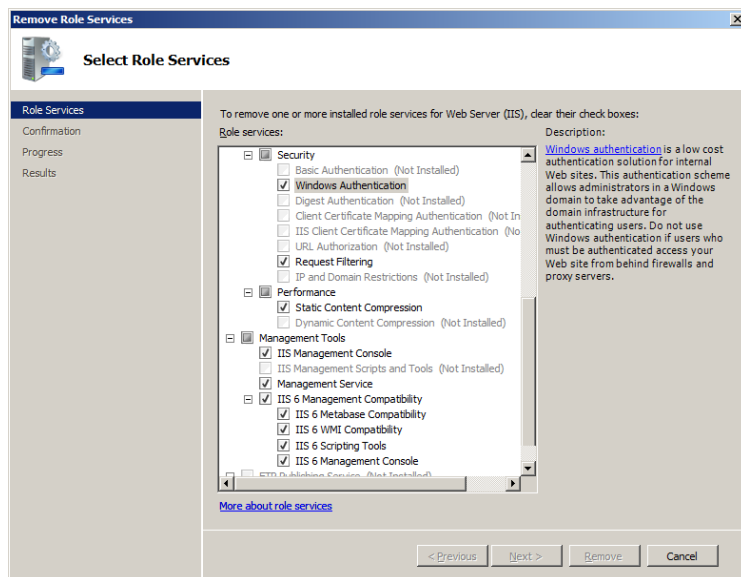
Some services are already selected in the dialogue *select Role services*.


You must simply select *ASP* in the *Application Development* branch. This will automatically select *ISAPI Extension*, too.



In *Security* check *Windows Authentication* if the portal has to be accessible via SingleSignOn in a Windows domain.

Scroll further down to the branch *Management Tools*. Select the option *IIS 6 Management Compatibility*. The sub nodes of this branch are automatically selected.



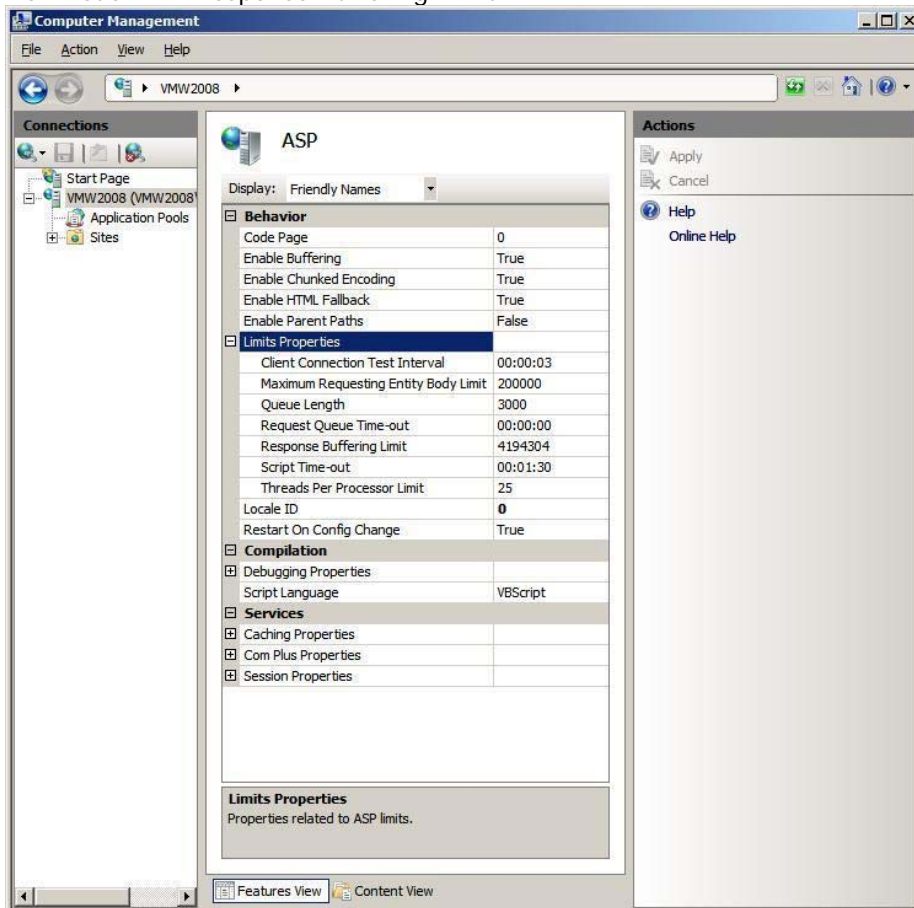
Click  *Next* in order to confirm the settings.

Settings for file up- and download

The default settings for IIS allow only smaller files to be up- or downloaded in the web browser. Hence, the limit properties must be adjusted according to the requirements (limits in bytes). Proceed as follows:

Open computer management → server manager → roles → IIS Manager → ASP → Limit Properties.

Upload: Maximum Requesting Entity Body Limit
Download: Response Buffering Limit



The settings take effect without restarting the www service.

In addition to these settings, which enable file transfers up to a size of approx. 60MB, further settings can be done to enable even larger file transfers. According to the value set here in the ASP limit properties you can set this value also in the "applicationHost.config". Open the following folder as Administrator:

C:\Windows\system32\inetsrv

Run the following syntax to set the value to e.g. 100MB:

```
Appcmd set config /section:requestfiltering  
/requestlimits.maxallowedcontentlength:100000000
```

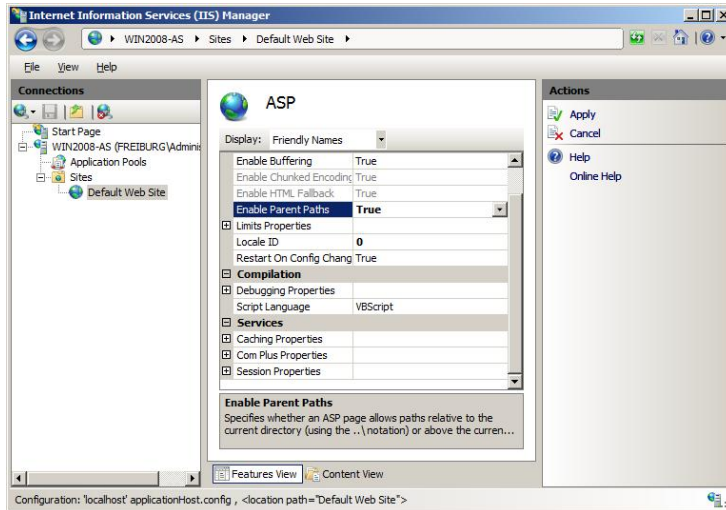
Browser access of the portal without specification of virtual directory

In order to access the portal under *http://servername* the physical path of the default web site must point to <xtreme>\org\portalName\external\htmlroot.

Additionally the option *parent paths* must be enabled in the ASP settings.



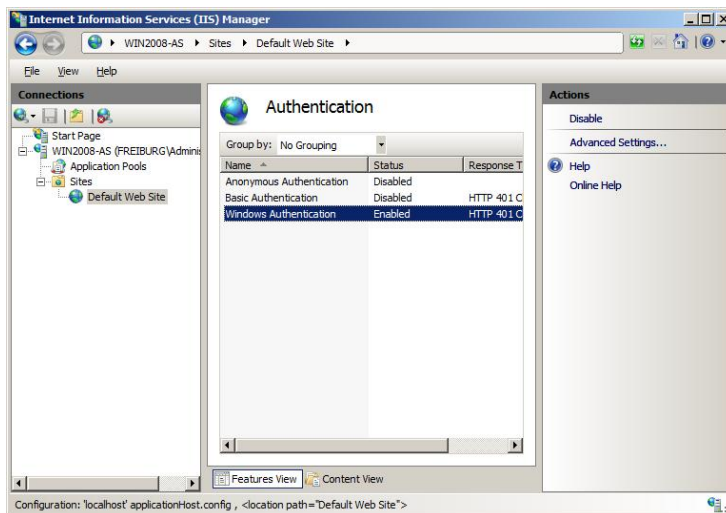
In order to prevent system failures in the IT environment such customizations must only be applied with the assistance and advise of the system administrator.



If the portal shall be accessible with integrated Windows authentication, Windows authentication must be enabled and anonymous authentication must be disabled for the default website.



Depending on the IT environment those options might be default settings.



Windows Server 2008 Release 2: Customization of permissions

Missing user permissions for the Intrexx portal's root folder result in a HTTP 500.19 error when trying to access the portal in a webbrowser.

Therefore make sure to grant permissions for the following folders:

<xtreme>\bin\windows\x86 or *<xtreme>\bin\windows\amd64* respectively
<xtreme>\org\<portalname>\external\htmlroot

to the following user and groups:

<servername>\IUSR
<servername>\IIS_IUSRs