

Intrexx Professional Intrexx Compact

RELEASE 5.2



Workshop Creating Applications


Contents



1. Installation	4
1.1. Microsoft windows.....	4
1.1.1. Mac OS X.....	4
1.1.2. Linux.....	4
1.2. Packages to install	6
2. Creating a new Portal	7
2.1. Portal Template	8
2.2. Data Base Server.....	9
2.3. Summary.....	10
3. Foreign Data Integration	18
4. Importing Users and Groups	18
5. Intrexx Design	19
6. Portal Pages and Application Portals	21






Copyright

This document is in all its parts protected by copyright. All rights are reserved, especially the right of translation, presentation, reproduction, and duplication. Regardless of the accuracy of the text, images, and programs neither author, publisher or translator may take judicial or other responsibility for possible errors and their consequences. The conventional names, trade names, product designations, etc. reproduced in this work may, even without special designation, be trademarks, and as such may be subject to legal regulations.



Writing conventions

In this handbook, text passages will be displayed in *italics* when they refer to settings in the displayed dialogs. Menu items that are available in context menus can, in addition, always be selected from the main menu. Main menu items will only be described if they are not available in the context menu. A description of the general main menu items can be found in the  *Portals* handbook. Programming code in the text will be displayed in the `Courier` font. Context menus can be opened by clicking with the right mouse button on the described element.

In the following, `<intrexx>` refers to your Intrexx installation path. For example, on Windows operating systems, the default path is  `c:\programs\intrexx`, on Linux by default  `/opt/intrexx/`. The following symbols will be used for designation of special kinds of information:

-  Information
-  References to an Intrexx handbook
-  Directories
-  URLs
-  Click on buttons

Background knowledge

For this handbook, you require no special training. You can find helpful information in the Intrexx handbooks  *Portals* and  *Start*.

1. Installation

This workshop will guide you through the creation of an application with Intrexx step by step. To do so, Intrexx has to be installed first. In the following chapter you will find instructions for the installation under different operating systems.

1.1. Microsoft windows

Insert the installation DVD for Intrexx into the DVD drive of the computer. The setup program should start automatically on Microsoft Windows systems. If this is not the case, please run the file *Setup.exe* on the DVD.

1.1.1. Mac OS X

Place the Intrexx CD in the drive and mount the drive. Next, start the graphical installation routine by double clicking on Intrexx Setup.

1.1.2. Linux

For Linux systems, switch to the console or open a terminal window and switch to the *root* user. In this document, it will be assumed that the mount point for the DVD is */media/dvd*. This may vary by system.

```
# su -
```

Mount the DVD if your operating system does not do so automatically.

```
# mount /media/dvd
```

Go to the DVD-ROM directory:

```
# cd /media/dvd
```

Start the setup.



```
# ./setup.sh
```

On systems with a running X Server, the graphical Setup will start now. If you do not run an X-Server the installation routine will start via the console.

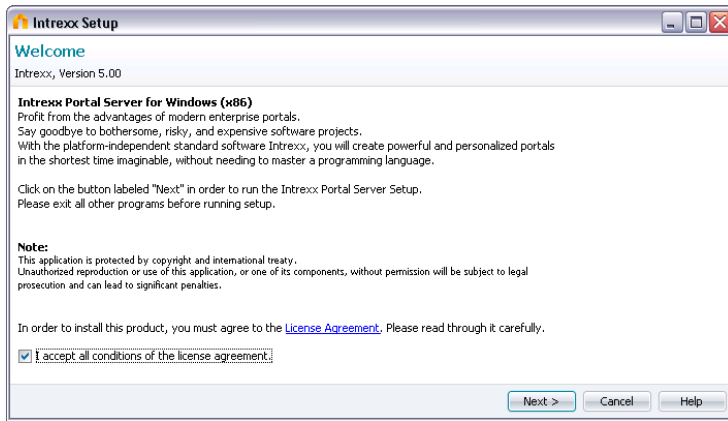
In this case a console wizard will guide you through the installation. If you want to assume the changes please confirm the respective entries by pressing the <enter>key.

Example:

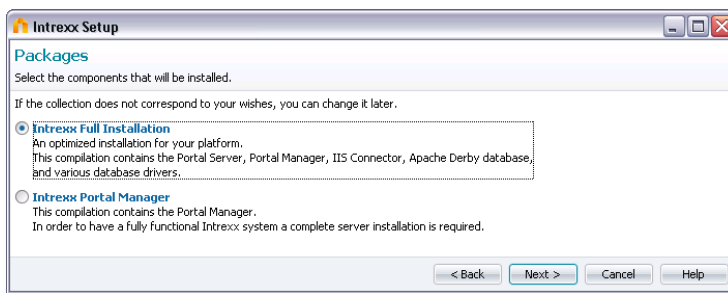
Installation directory  `[/opt/intrexx]` ?

Pressing <Enter> installs into the directory  `/opt/intrexx`, otherwise the alternative path can be entered, for example  `/opt/intrexx52`.

The rest of the installation is identical on both Linux and Windows platforms.




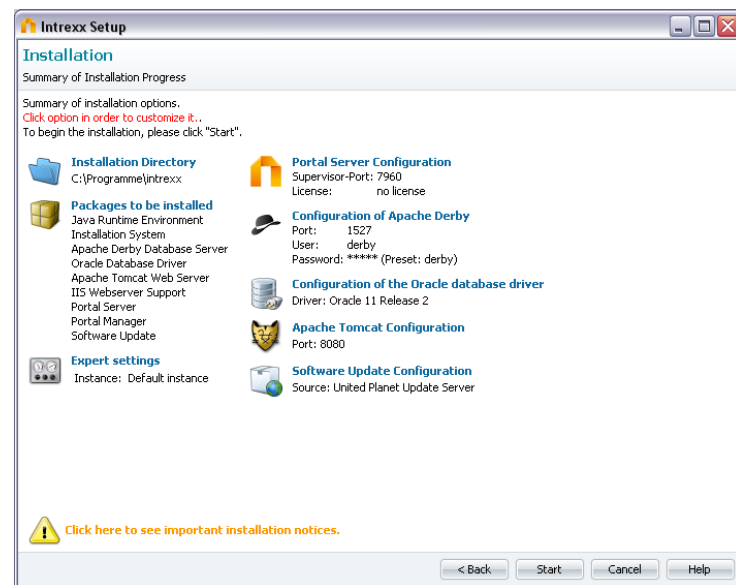
Read and confirm the license conditions and then click  *Next*.



Here you have the option to either select a *Complete installation* with the Intrexx Portal Server and Manager, IIS Connector, the Apache Derby Database and various database drivers, or only install the *Intrexx Portal Manager*.

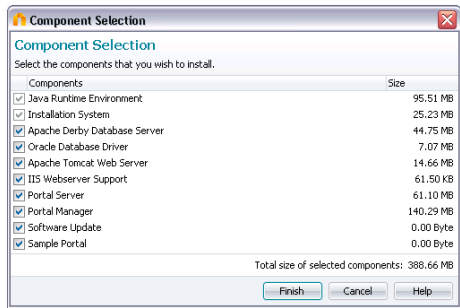
In order to run Intrexx for the first time, the complete installation is required. If portals on other systems are to be administered, you can install the *Intrexx Portal Manager* on these other systems afterward.

Close all other opened programs, then click  *Next*.



Here you can see the individual components and settings for a standard installation. If you want to change settings or exclude components from the setup, simply click on the corresponding place in this overview. In the dialogs that then appear, you can apply these changes.

1.2. Packages to install



The following components are required for the full functionality of the Intrexx Portal Server and cannot be excluded from the installation:

- **Java Runtime Environment**
- **Installation System**

You may exclude the following packets from the installation:

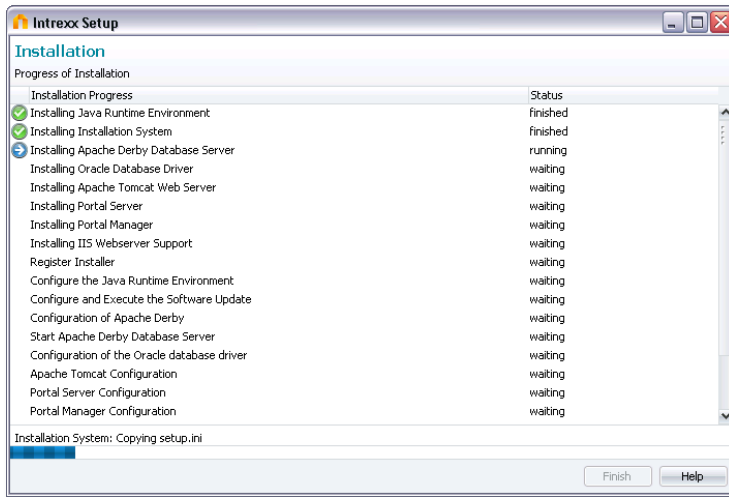
- **Apache Derby Database Server**
- **Oracle Database Driver**
- **Apache Tomcat Webserver**
- **IIS Webserver Support**
- **Portal Manager**
- **Software Update**
- **Create Sample Portal**

Here you can select the Apache Derby Database Server, if no other data base server is available.

With *IIS Webserver Support*, a connection to the Microsoft Internet Information Server will be prepared. The assignment will take place only upon configuration of a created portal. Please note that the Microsoft Internet Information Server must be installed and activated on the server system.


If you select or deselect individual components, the current storage space requirements will be shown in the lower right.

Click on  *Finish*, and in the following dialog on  *Start*, to begin the installation.



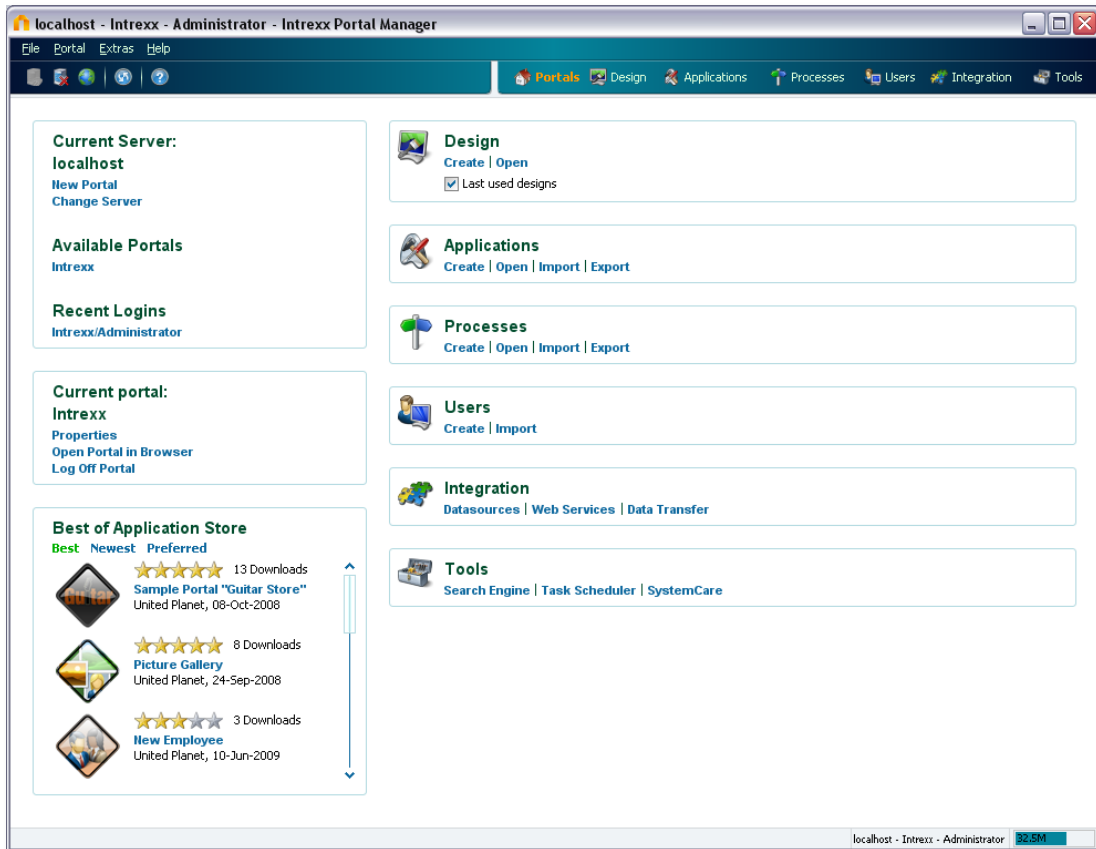
Here you will be informed of the progress of installation.



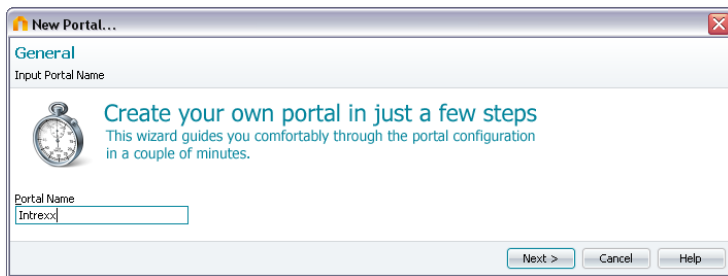
After the installation is complete, you can start the *Intrexx Portal Manager* here. On Linux systems you will find the *manager.sh* in the folder  `<intrexx>/client/bin/linux`.


2. Creating a new Portal

If you start the Portal Manager, you will automatically start in the area *Portals*.



In order to create a new portal, please click on *New Portal*. In the *Portal Name* field, enter a name of your choice for the portal.

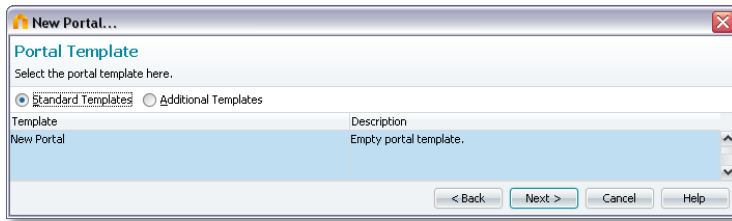


All files and folders belonging to the new portal will be contained in their own subfolder under the  *<intrexx>\org* directory. When you enter the portal name, the name will be automatically applied as the name for the subdirectory.

2.1. Portal Template

Default Template

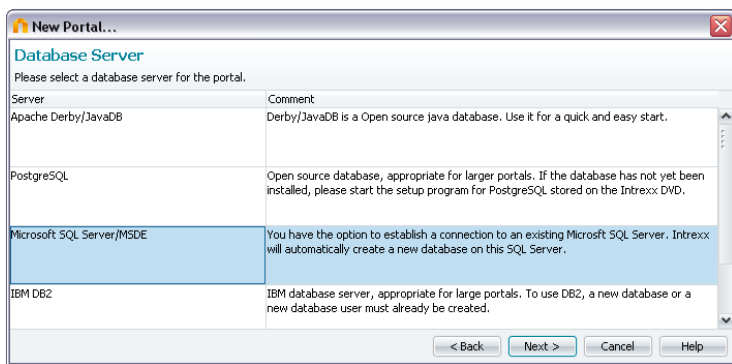
In the following dialog, select a portal template. In the delivery package of Intrexx, the portal templates *New Portal*, *Enterprise english*, *Enterprise german*, *Compact english* and *Compact german* have been included. The Enterprise and Compact templates contain sample applications and data.



Other Templates

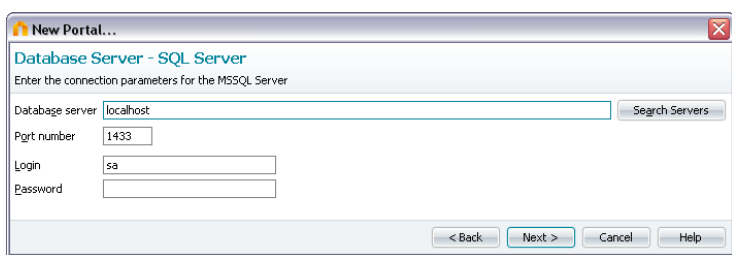
All informations on this option can be found in the chapter *Import Portals*. If the desired template is selected, please click *Next*.

2.2. Data Base Server



Various data base types can be selected here. If no drivers are available for a database server, you will be notified of this with a message, if you click *Next*. Drivers that are not yet installed can be included if you run the setup once again.

The following dialogs, which you will use to set up the connection to the database server, will vary depending on the database types. For information on other database connections, please consult the in-program help files of Intrexx.

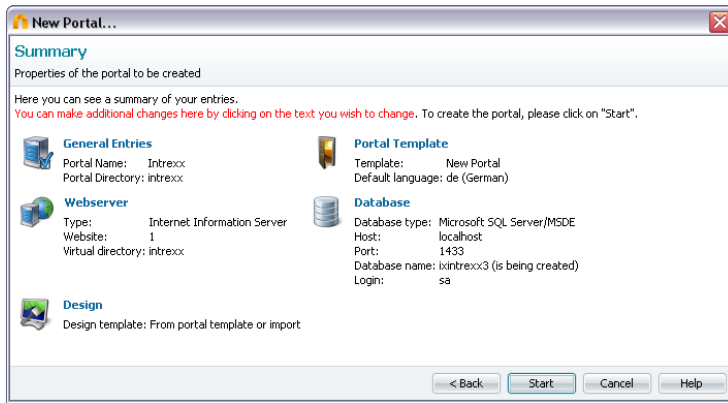



Enter the name of the data base server here. The *Port Number* will be identified and entered by Intrexx. It can also be changed here. Enter the username in *Login* and a password for access to the database server (Apache default: login - *derby*, password - *derby*).

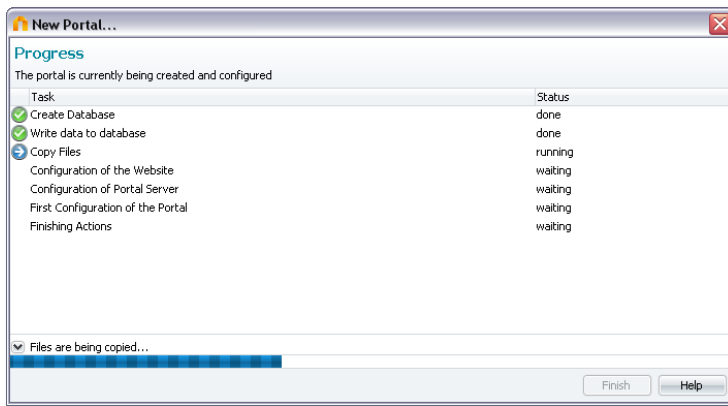
In the lower area you can either *create a new data base* or *use an existing data base* for your portal.

The *Database Name* will be automatically created by Intrexx using the portal name prefaced by the letters *ix*. You can change the database name if you wish. If the entries are complete, please click *Next*.

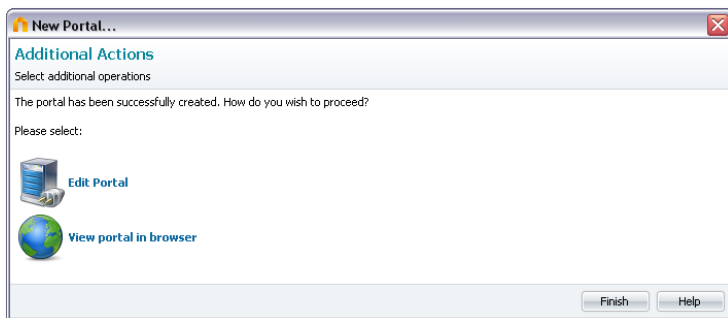
2.3. Summary



In the summary, there is an overview of the properties of the new portal, where you have the ability to make changes to the individual components. Click  *Start* here.

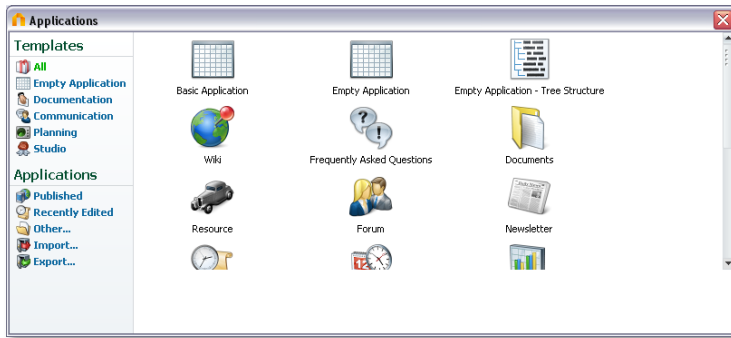


You will be informed of the progress of the portal's creation here.

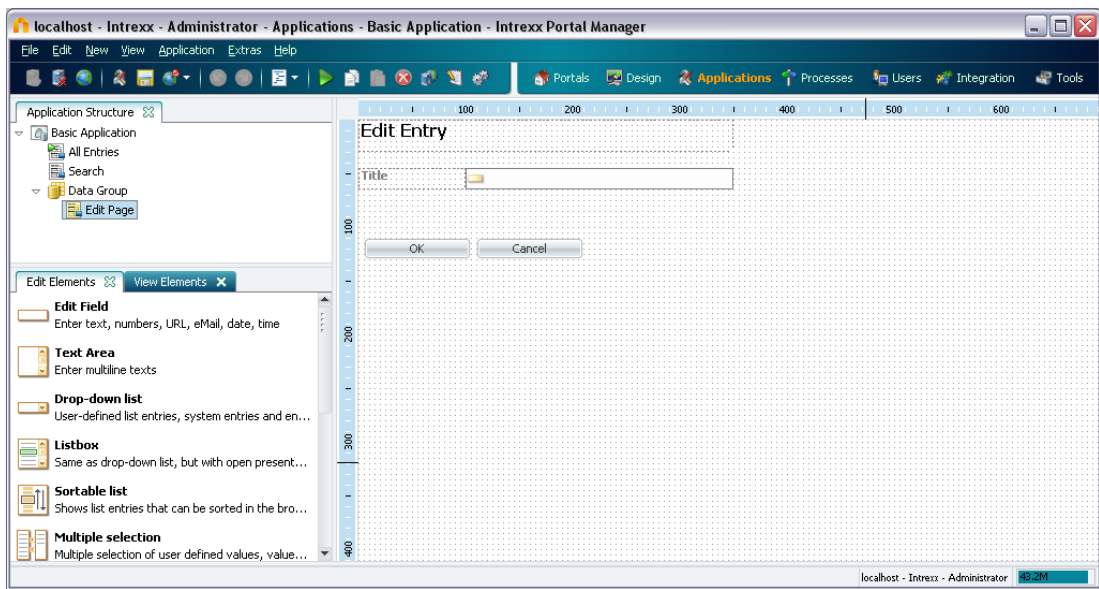


After the portal creation is complete, you have here the ability to immediately enter into editing the portal in the Portal Manager by clicking the link to *Edit portal*. You will then be automatically logged onto the portal as administrator. The new portal has now been entered into the *Available Portals* area.

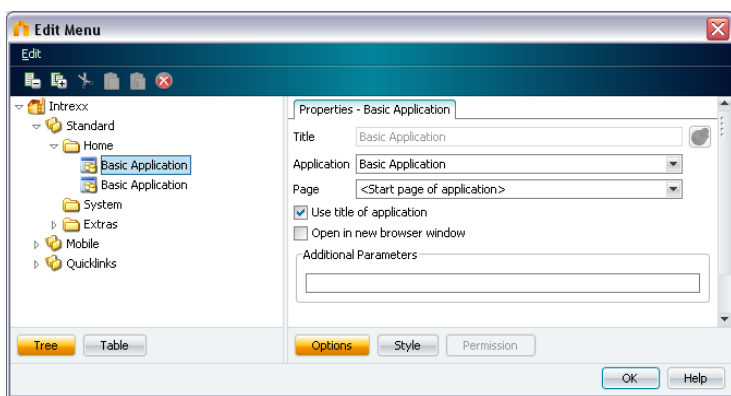





Select the application template *Basic Application* here.



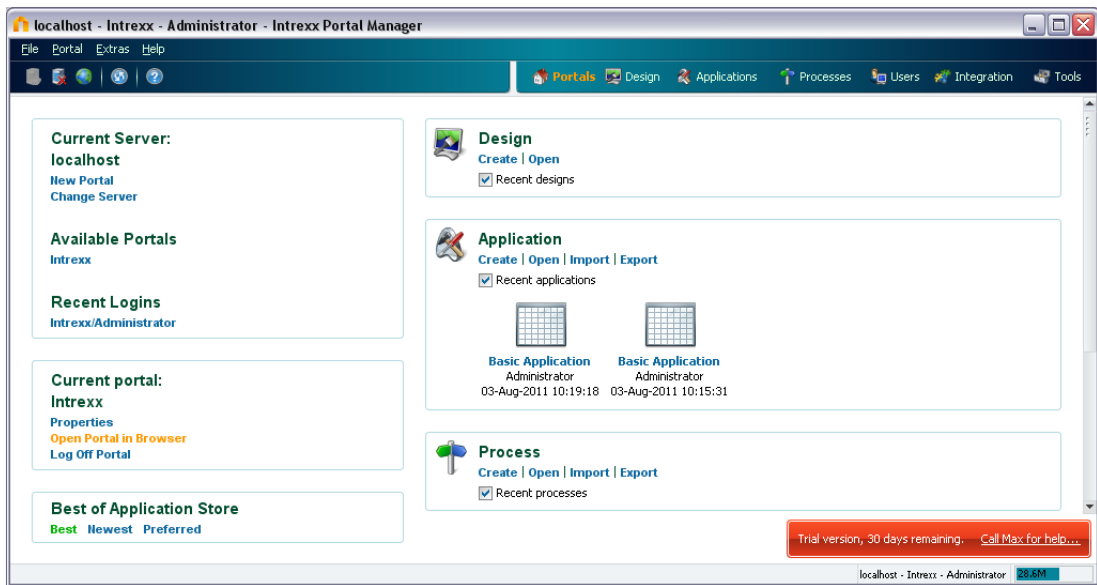
Here you can see the structure of the application in a list of all application pages and the data groups. The application can already be saved right now and will be immediately available in the portal under the title *Basic Application*. To do so, please select the menu *File / Publish Application*.



Here you see the menu structure of your portal. The basic application will be automatically published in the menu item *Home*. It can be moved to another location within the menu structure via drag & drop at any time. If you intend to use the application

in the browser, please consider to publish it in the area *Standard*. *Mobile* and *Quicklinks* are menu areas for mobile devices. Click  *OK*.

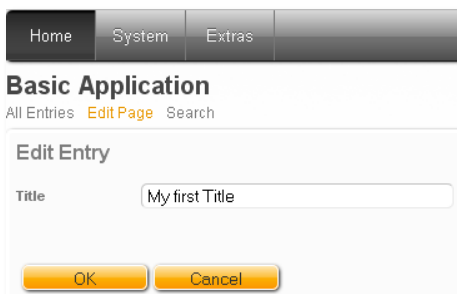
Switch back to the module *Portals* and click on the link *Open Portal in Browser* there.



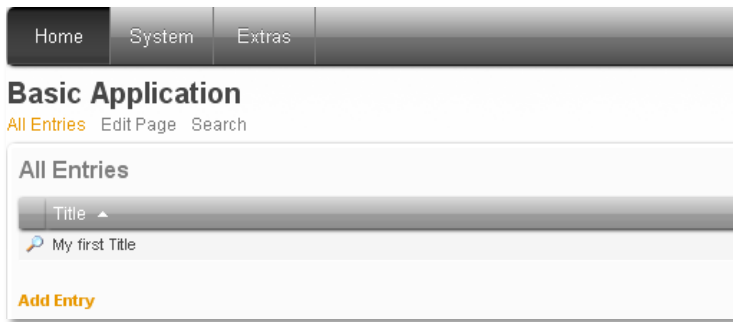
In the browser you can now see the start page *All Entries*, if you select the *Basic Application* under the menu item *Home*.



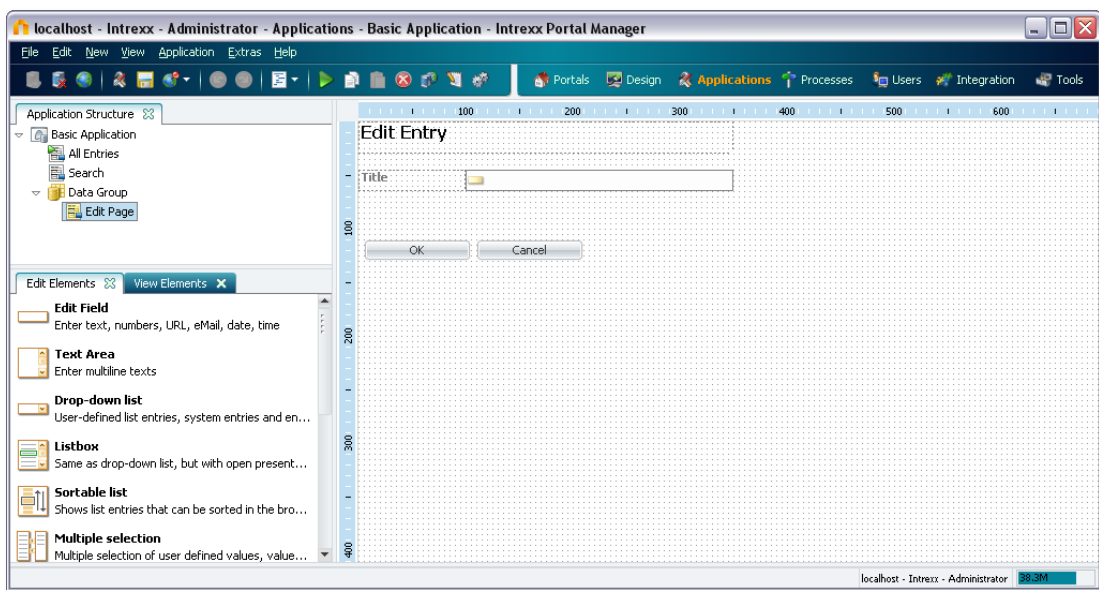
If you click on the *Edit Page* you can already enter data.



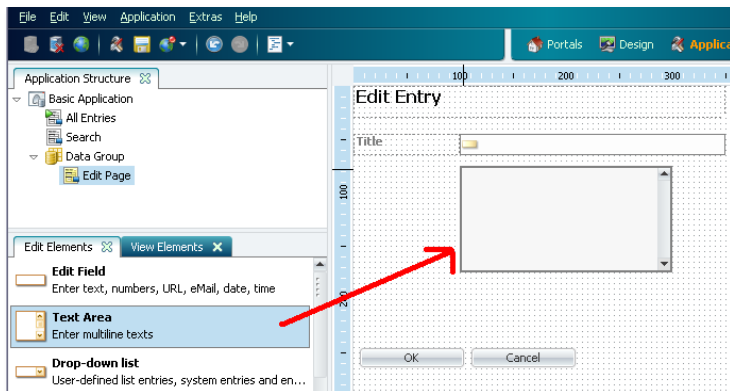
Click  *OK* here.



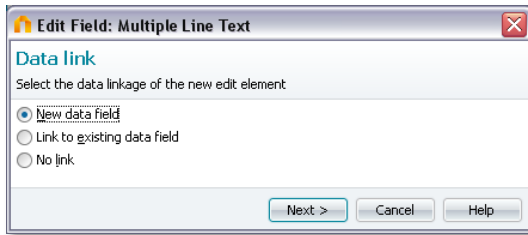
The first data record is now visible in the table on the start page. You can now change the scaffold of your application as desired if you switch back to the Application Designer in the Intrexx Portal Manager.




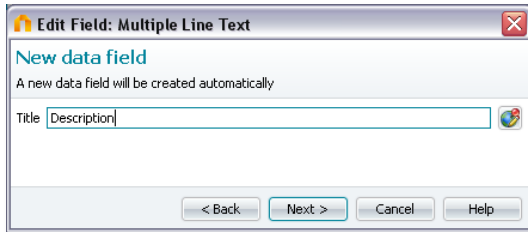
For example, if you wish to enter a description for a book you can easily add a *Text Area Edit Element* under the *Title* field. To do so, click on the *Text Area Element* in the toolbox and move the mouse to the desired location on the workspace. You will see a preview of the shape of the future *Text Area* element.




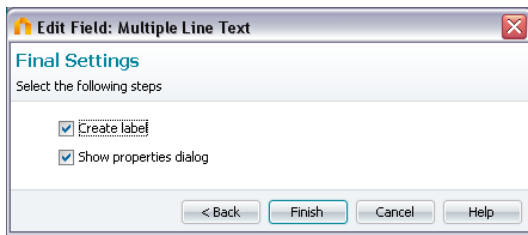
Then click on the workspace. An assistant will guide you through the creation process.



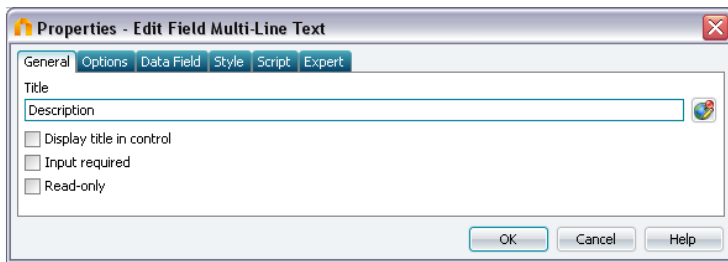
Click  *OK* here for creating a new data field in that your data will be stored at the same time.



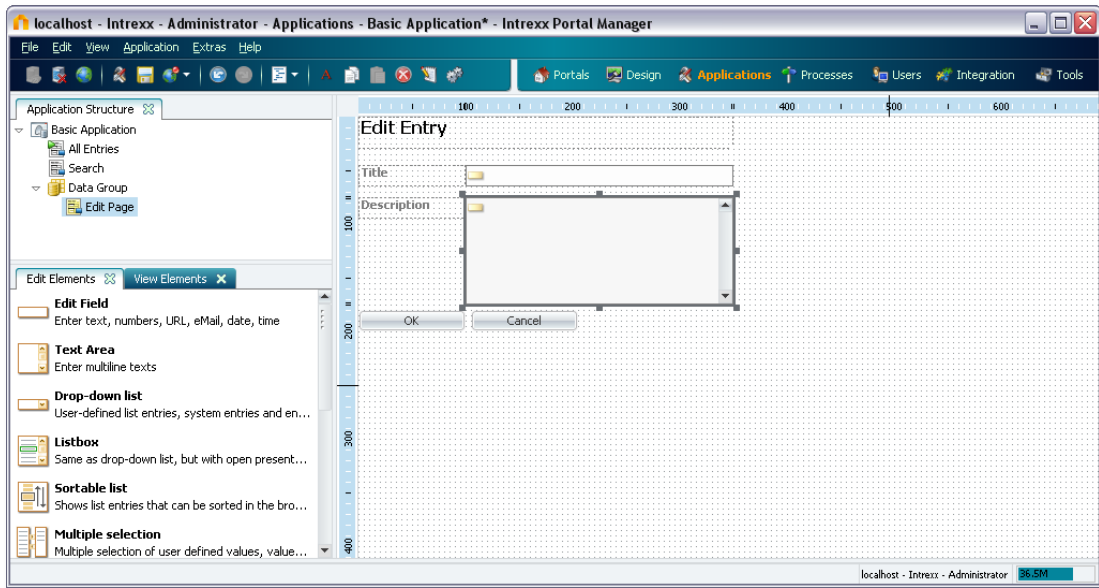
Here you can enter the title *Description*. Click  *Next*.



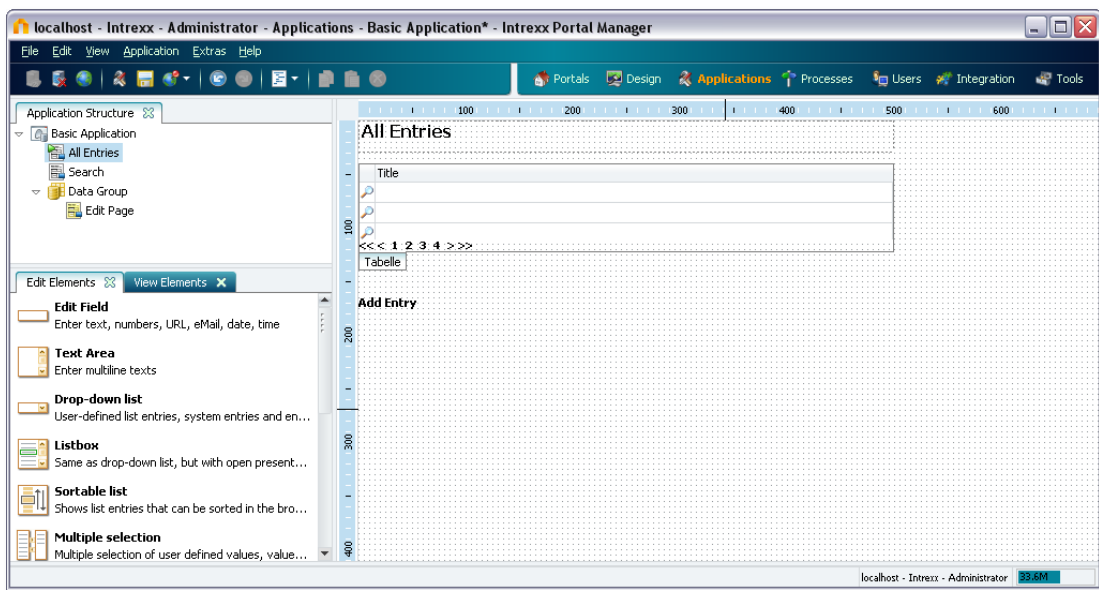
Click  *Next*.



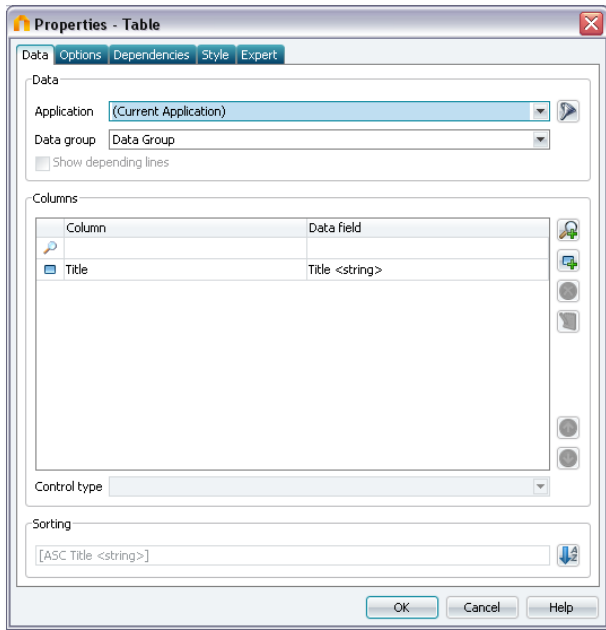
Click  *OK*.



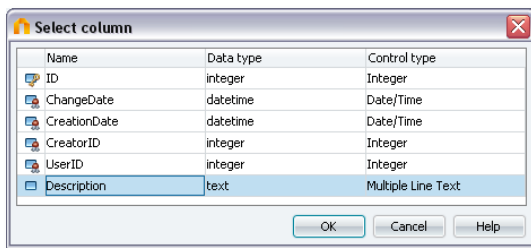
Here you can adjust the size of your text area by dragging the selection points at the corners and the middles of the sides of the shape. Switch to the start page *all Entries* then.



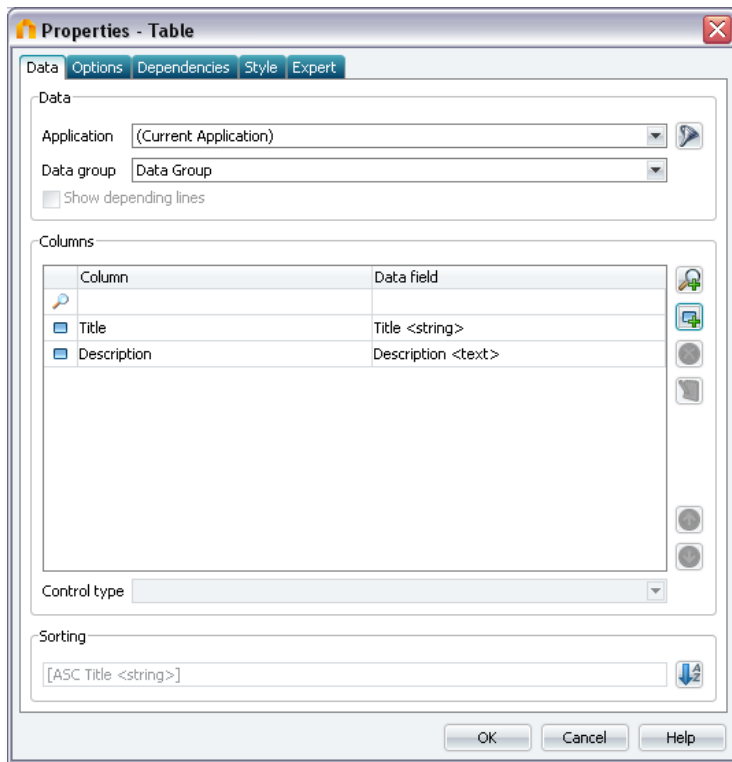
If you would like to see the description also listed in the table, just open the properties with a double click on the table.




Click on  *Add Data Field*.



Select the *Description* here.



Click  **OK** and save the application. Now you can also see the description in the table if you switch to the browser.



On the *Edit Page*, a description can be entered now.

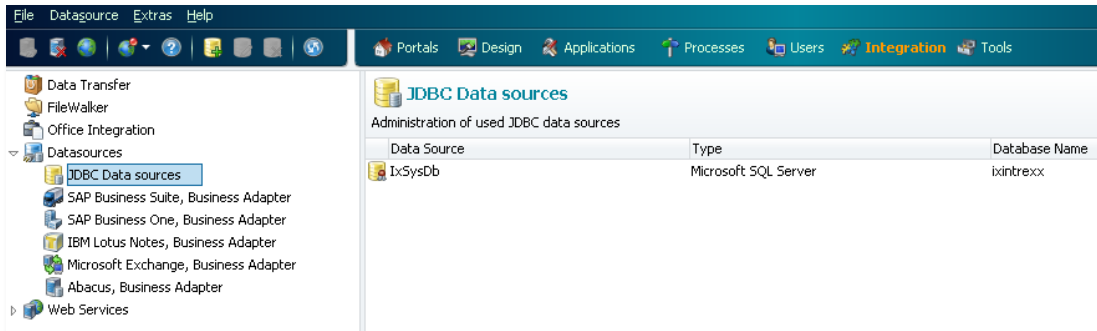


In the same simple way a variety of different elements can be used in Intrexx applications. Of course the title and the data structure can be changed as desired, too.

3. Foreign Data Integration

Another interesting aspect is the integration of external data sources in your Intrexx portal. With Intrexx, you can directly access data sets of various origins. This foreign data will be shown in Intrexx applications in the portal. If the connection to the foreign data source has been set up, all foreign data fields can be connected with edit and view fields in the module *Applications* as usual.

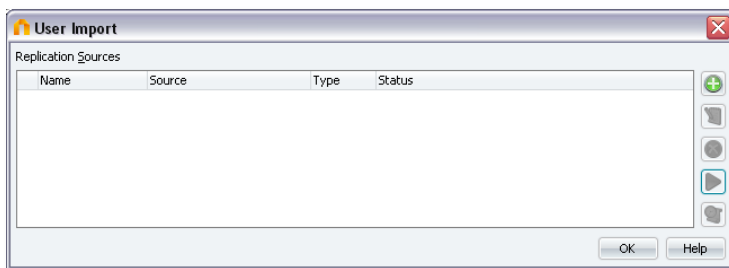
The connection to an external data source will be set up in the *Integration* module with the *Data Sources* function.




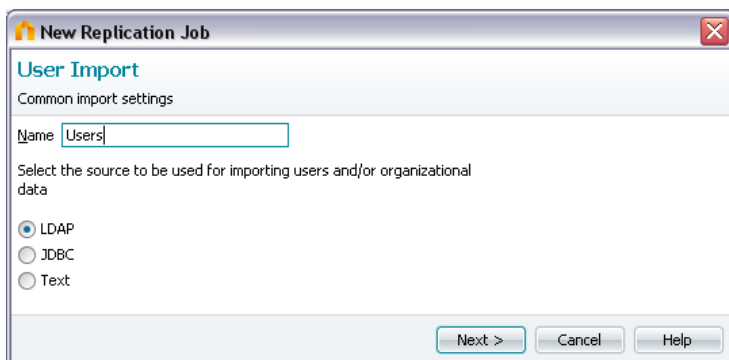
The data sources *JDBC*, *SAP Business Suite*, *SAP Business One*, *IBM Lotus Notes*, *Microsoft Exchange* und *Abacus* are supported.

4. Importing Users and Groups

There are multiple methods in Intrexx to import users from your existing IT infrastructure. The User Manager supports you with the import assistant when importing data from LDAP directories (such as *Windows Active Directory*), JDBC-sources and ASCII files (such as *Linux/Unix Passwd*). For the import, select the menu item *Users / Users and Groups Import*.



Select  *Add* to create a new replication source.

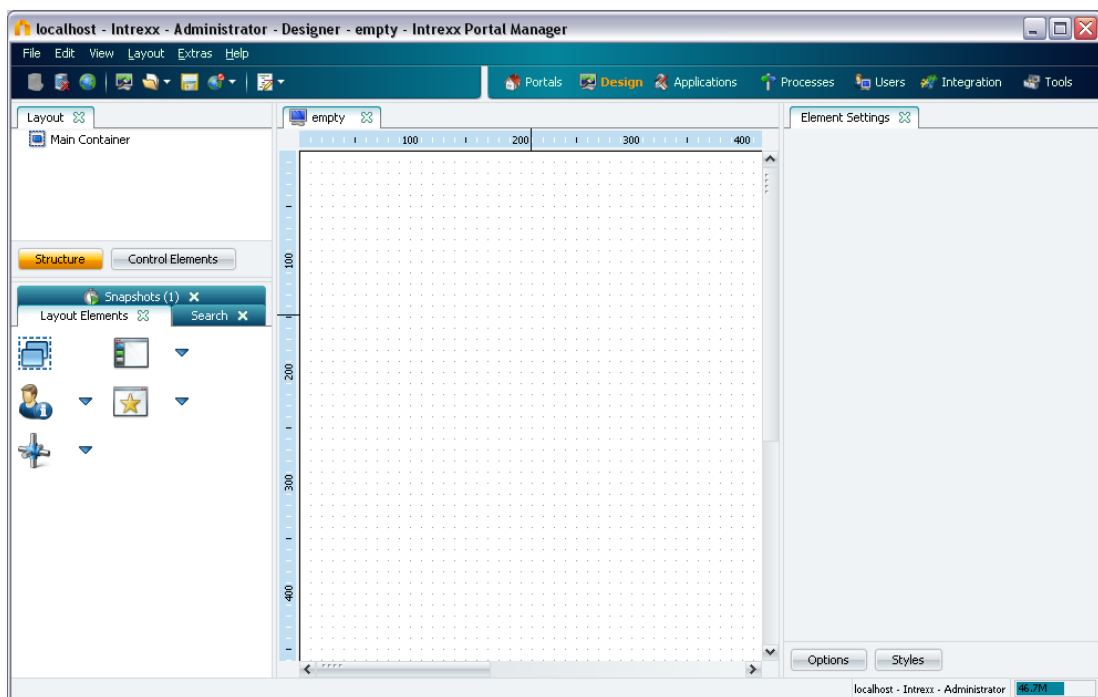


Select the type of import source and enter a name for it here. The *LDAP* option allows all LDAP-conforming sources, such as Microsoft Active Directory or Open LDAP, to be imported. With the standard configuration, the following import profiles are available:

- Microsoft Active Directory
- Sun ONE Directory Server
- Novell Netware.

The options *JDBC* and *Text* allow users to be imported from JDBC data sources and text files respectively.

5. Intrexx Design



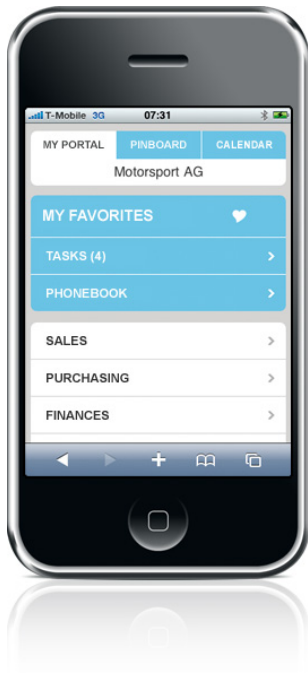
In the *Design* module, you will create and edit the layouts of your portals. Intrexx layouts are based completely off of Cascading Style Sheets. The entire design is therefore represented by CSS positioning, which makes possible a quick page construction and an optimal searchability for search engines without the use of frames.

Through the use of caching mechanisms, the combination of many individually loaded files into a few larger ones, as well as the comprehensive compression of Javascript and CSS files, a high degree of performance is possible. Barrier-free pages can also be constructed. You can find an introduction to CSS in the *Appendix* of this handbook.

With Version 5.0, we support you in the creation of portals and applications for mobile end devices – including especially for the Apple iPhone.

When developing applications for mobile end devices, special requirements come about for the underlying platform: in addition to the minimal bandwidth of connections and the insufficient to completely missing support for Javascript (required for AJAX and

interactive forms), special requirements, like the sliding effects for the iPhone for example, must be taken into account.



The support for mobile end devices is based on the following three principles:

- Design and design selection corresponding to the end device
- Arrangement and layout of applications
- Construction of the menu

Design and design selection

Every end device supports a specific range of possibilities, which are restricted by the bandwidth of the connection, the abilities of the installed browser, the device software and the device itself. While the iPhone from Apple offers the greatest degree of functionality, devices like the Blackberry end devices of the previous generation offer no support for Javascript.

In the *Design* module, you can define which end devices with which layout should be supported and whether the end device offers support for Javascript or not. The Intrexx server provides the desired layout corresponding to the identification of the end device.

Arrangement and layout of applications

The transformation of an application page for a mobile end device automatically ensures that no layout is used for the page that is based on tables; rather, a page will be generated that is completely based off of CSS and pure HTML. The designer of the application must not have any special knowledge of CSS here. One must only take into account that the page must be sufficiently small that it can be shown on the display of the end device.

Construction of the menu

As all applications in a portal will never be used in mobile end devices; rather, usually only access to information on the enterprise that is important for management, individual

menus for each layout can now be created, which are customized for the special requirements of mobile end devices.

This allows, for example, for applications to be offered exclusively for the iPhone, while other applications will be implemented for all mobile end devices. The start page for an application, especially adjusted for the end device, can also now be defined by editing the menu. One and the same application can be placed in the menu as many times and in as many places as you wish.

6. Portal Pages and Application Portals

In Intrexx, all kinds of information from the portal can be combined into portlets and displayed on portal pages. The number and arrangement of the portlets on a portal page can be individually adjusted by each user with the appropriate access rights.

The screenshot displays the Intrexx Enterprise Portal interface. At the top, there is a navigation menu with tabs for Home, Sales, Purchasing, Organisation, Collaboration, Marketing, and IT. The main content area is titled 'Home' and features a large image of a modern living room. Below the image is a green banner with the text 'See the latest product line!' and a short paragraph. To the right of the main content area is a 'Pinboard' section with tabs for 'Pinboard' and 'Appointments'. It contains a 'Bulletin Board' with two items: 'Soccer' (The indoor season is starting... in 1 day) and 'Key found' (Vehicle key found in factory hall 2 for 12 hours). Below the bulletin board is a 'Documents' section with one item. At the bottom left, there is a 'Current sales' table with columns for Employee, Completion date, and Sales (in EUR). At the bottom right, there is a 'Corporate Blog' section with two entries: 'Peter Meiers 02/07/2011 Sitting on ideas. 50 years of chair design' and 'Tina Mesh 20/06/2011 A look back: Our booth at the furniture convention'.

Employee	Completion date	Sales (in EUR)
ClaudiaL	19/08/2011	1,800.00
ErwinM	23/07/2011	950.00
PeterM	22/07/2011	850.00

In addition to the portal pages, there exist application portals, where the most important information of the application will be prepared for presentation. An application portal is a special page in an application, such as here the application portal for the application *CRM Studio* (Applications). An unlimited number of application portal pages can be defined in the *Applications* module.

Home Sales Purchasing **Organisation** Collaboration Marketing

Organisation > Investment Proposals > Overview

Investment Proposals

Overview Investment volume Administration Search

All investment requests

Unprocessed investment proposals

No.	Applicant	Department	Investment	Investment amount
4	Tina Mesh	Marketing	MacBook	1,300.00
6	Tina Mesh	Marketing	NAS	5,000.00
8	Peter Meiers	Marketing	Office chair	149.00
10	Tina Mesh	Marketing	24" TFT	199.00
14	Peter Meiers	Marketing	License	1,940.00

Quicklinks

Add proposal

⌂ ✎ ⬆

Personal Investment Proposals

Unprocessed investment proposals

No.	Investment	Investment amount
No data exists		