

# **Intrexx Professional Intrexx Compact**

RELEASE 5.2



**Workshop:  
Language dependent References**

## 1.1. Language dependent References

When data groups with more than one primary key have references and the values of session variables are used in the foreign key, a reference can be set as language-dependent. An interesting aspect of this possibility is in connection to access to third-party data (🔗 *Foreign Data Access*).

In the following example, a jeans collection will be administered. If a user switches the portal to English, the colors of the corresponding models will be shown in the correct language. Please consult the handbook 📖 *Applications* for the required background information about the development of applications.

### English Language Setting

Jeans	Color
501	red
501	black
503	red
503	black

### German Language Setting

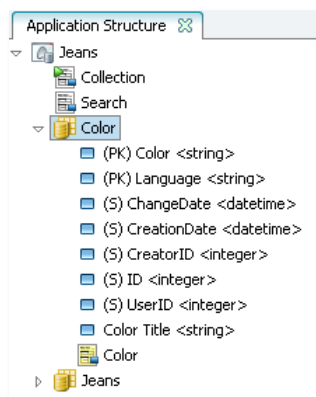
Jeans	Farbe
501	rot
501	schwarz
503	rot
503	schwarz

On the *Color* edit page, a constant will be entered to the field *Color*, which in all languages uses the same character string for a color.

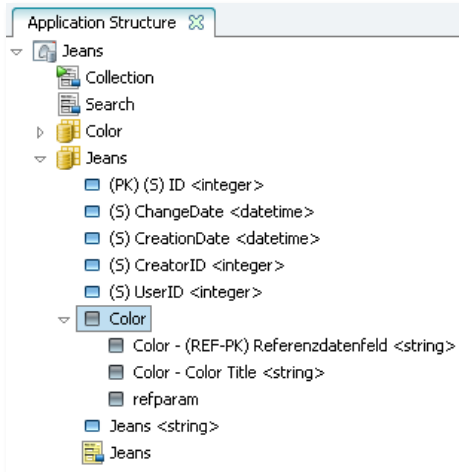
Color	<input type="text" value="RED"/>
Language	<input type="text" value="en"/>
Color Title	<input type="text" value="red"/>

In the *Language* selection list, the corresponding language abbreviation will be selected here. In *Color Title*, the color that will also be shown in the table on the *Collection* page will be entered in its corresponding languages.

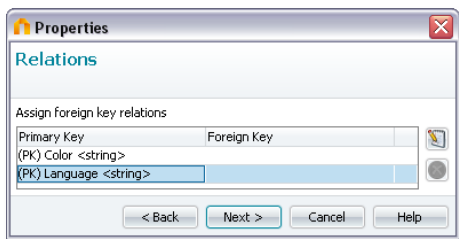
The structure of the application consists of the data groups *Color* and *Jeans*, whereby the *Color* data group contains two primary keys (*Color* and *Language*).



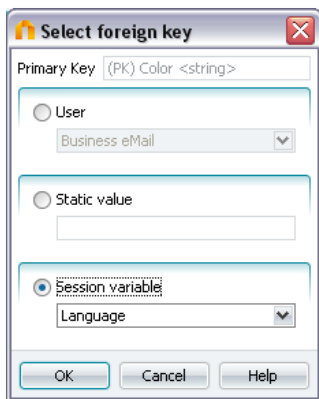
The *Color* data group will be referenced by the *Jeans* data group.



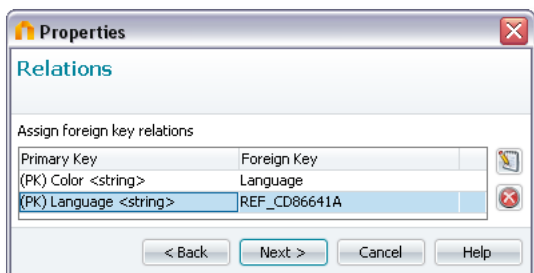
When entering this reference, you have the ability to assign foreign keys in the *Relationships* dialog.



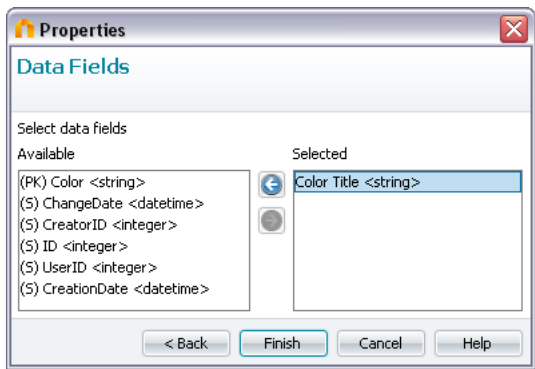
Highlight the *Language* primary key and click on  *Mark assignment*.




The session variable *Language* will be selected as foreign key, out of which in Intrexx, at any time, the language key of the current language setting of the portal can be read.

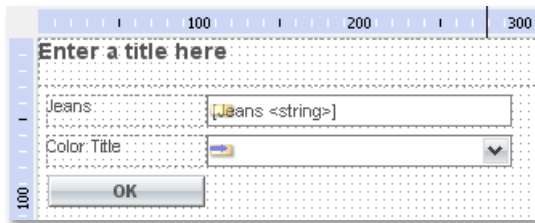


Click  *Next* here.

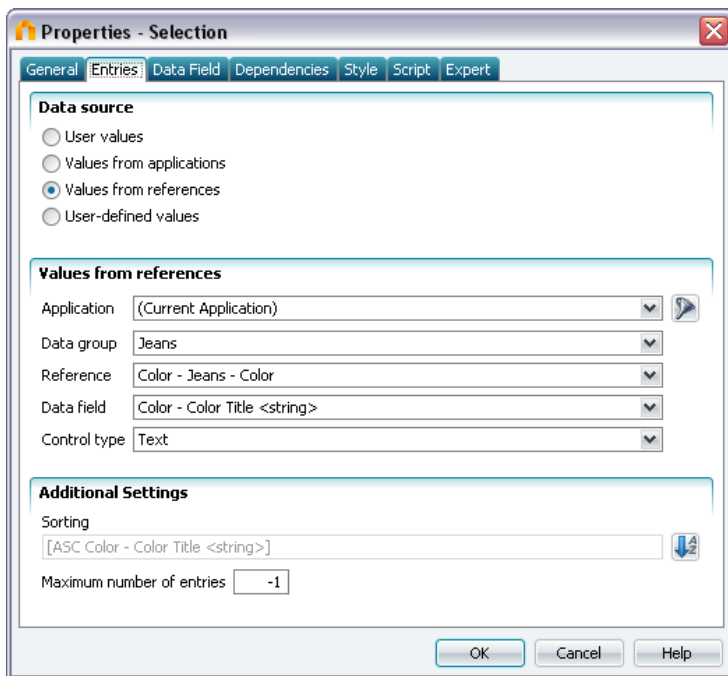


The *Color Title* will be selected as data field here. To apply these settings, click  *Finish*.

On the *Jeans* edit page, the selection list that allows the color to be chosen can now be created.



The entries in the selection list stem from the *Color Title* reference field.



Here is the *Jeans* edit page in the browser. The correct entries will be displayed in the selection list, whether the portal is set to English or German language.

## German Language Setting

Kollektion	Jeans	Farbe
Jeans	<input type="text" value="501"/>	
Farbe		<input type="text" value="rot"/> ▼
<input type="button" value="OK"/>		<ul style="list-style-type: none"><li>rot</li><li>rot</li><li>schwarz</li></ul>

## English Language Setting

Collection	Jeans	Color
Jeans	<input type="text" value="501"/>	
Color		<input type="text" value="red"/> ▼
<input type="button" value="OK"/>		<ul style="list-style-type: none"><li>red</li><li>black</li><li>red</li></ul>