

# **Intrex Professional Intrex Compact**

RELEASE 5.1



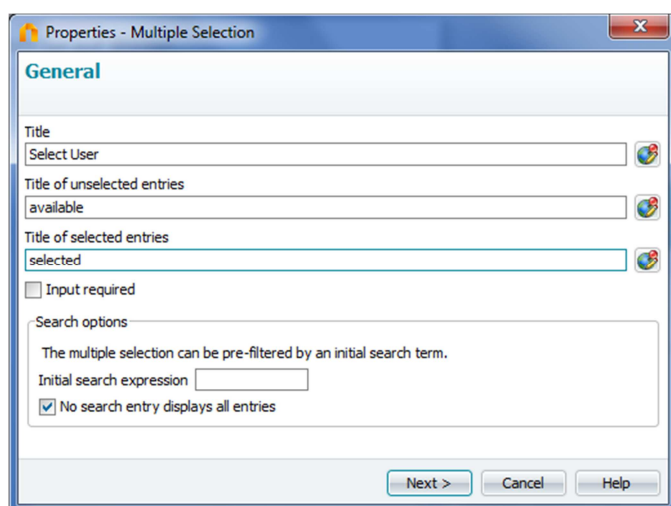
**Workshop:  
Multiple Selection – Differentiation  
between shown value and saved value**

This month's workshop introduces the new edit control *Multiple Selection*. This control offers the possibility to differentiate between values shown to the portal users and values which get actually stored internally.

That's reasonable in cases where data such as GUIDs or IDs must be stored as primary keys. Confronting the user with a choice of different GUIDs or IDs would most likely not help the user in order to find the record. Therefore we change the content of the *Multiple Selection control* to display full names or article descriptions. The content is easily recognisable by users but still the GUID is stored in the background and can be used for further purposes.

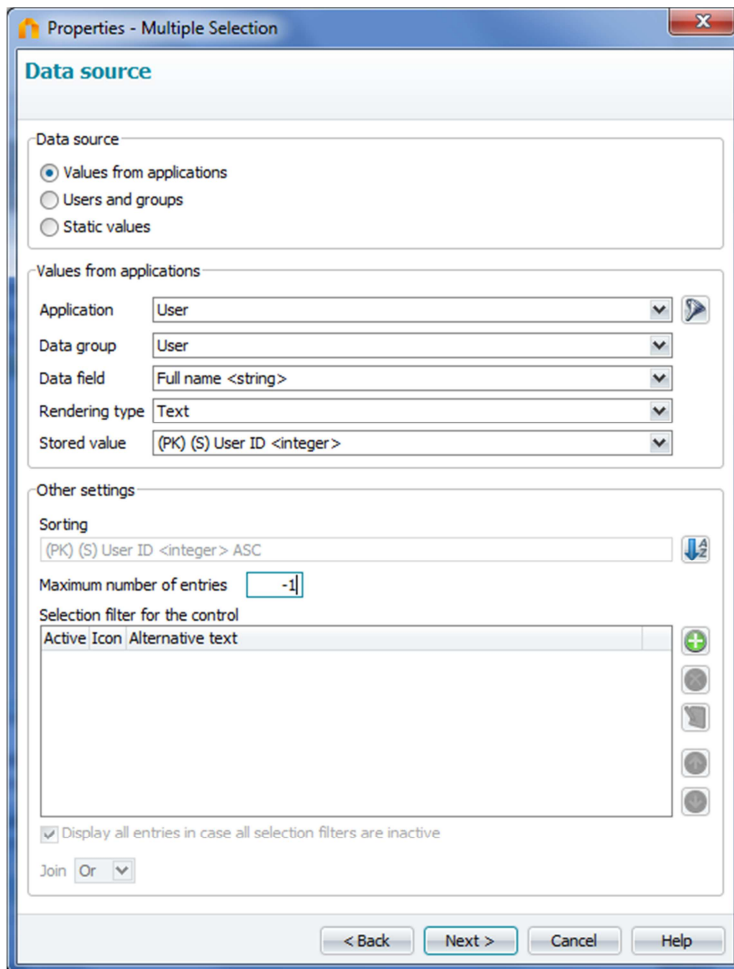
The following describes a how-to example being applied to the existing Intrex user management:

Launch the Intrex *Portal Manager* and open the module *Applications*. Create a new application based on the template *Empty Application*. Open the edit page of the data group and place the edit element *Multiple Selection*. Name the element *Select User* and click *next*.

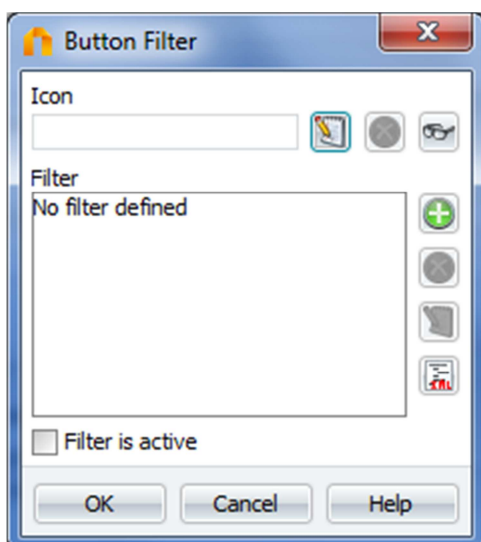


In the following screen choose *Values from applications* and select the application *User*. Select a data field – which later will be displayed in the portal. In this example we select the user's *full name*.

Below you see the selection list *Stored value*. Choose here which value from the data group *user* should be stored. Choose *PK User ID*.

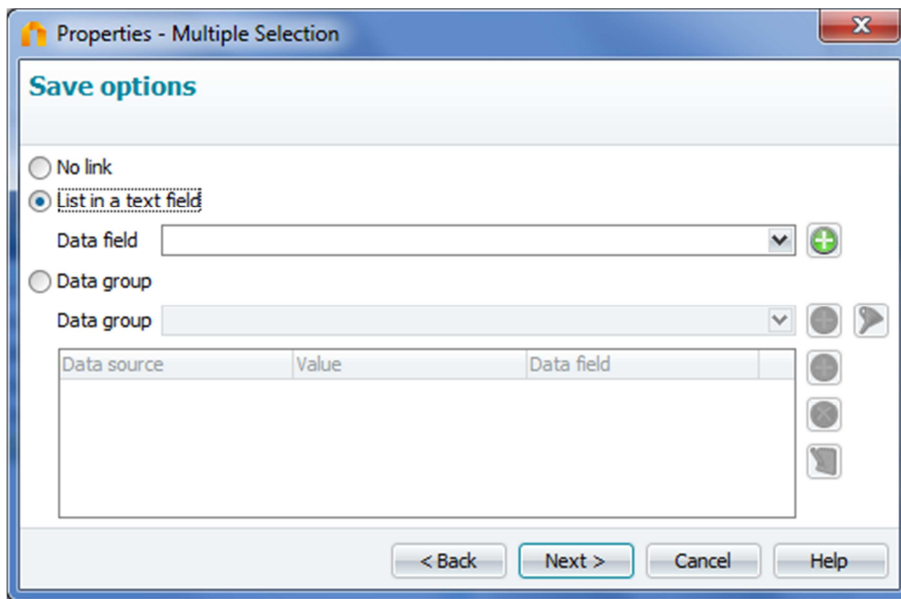



You can define filters in the lower part of the screen. In comparison to static *onload* filters these filters can be en- or disabled dynamically in the web.

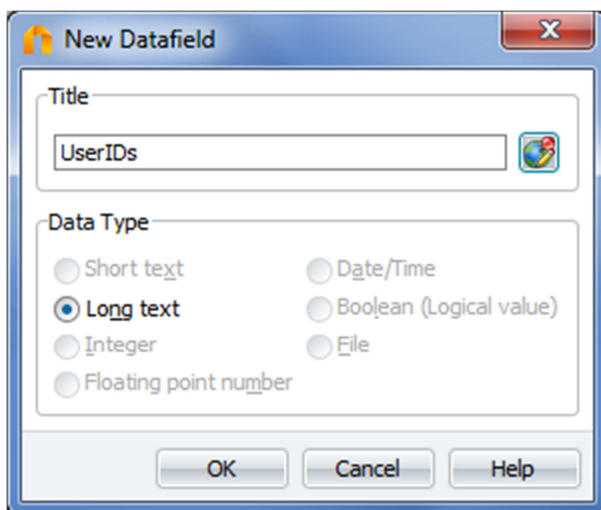


You can even place your own icon for that filter control. This will be displayed in the control and a click changes the state of the filter.

On the next screen the data field, in which the value will be stored, must be selected.



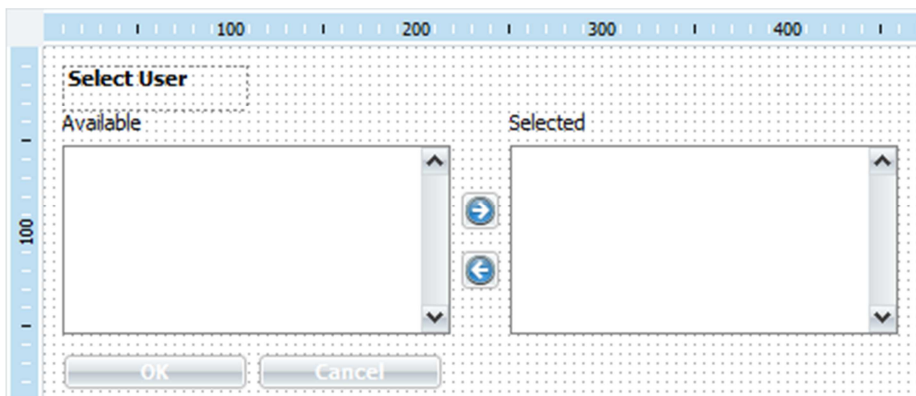
If the application doesn't have an according *longtext* field, it can be created via a click on . Give the field a name such as *UserIDs*.




If the option *No link* is selected, the *Multiple Selection* can be used to view the data only. This can be useful in cases where the selected values are being used to trigger further actions on the page, without saving the values to the database.

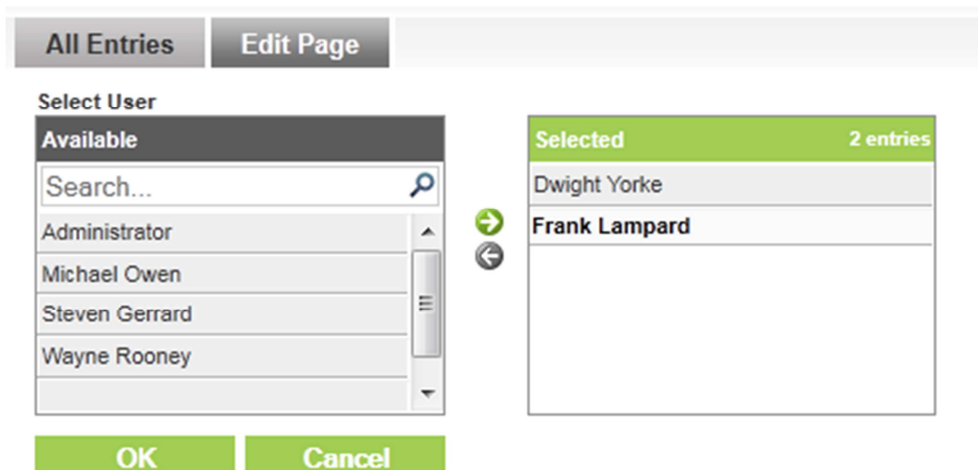
A click on *next* takes you to the final configuration screen. Optionally you can give the field a label. Confirm the settings by clicking *Finish*.

Finally add an *OK* and *Cancel* button. The edit page will than look like this:

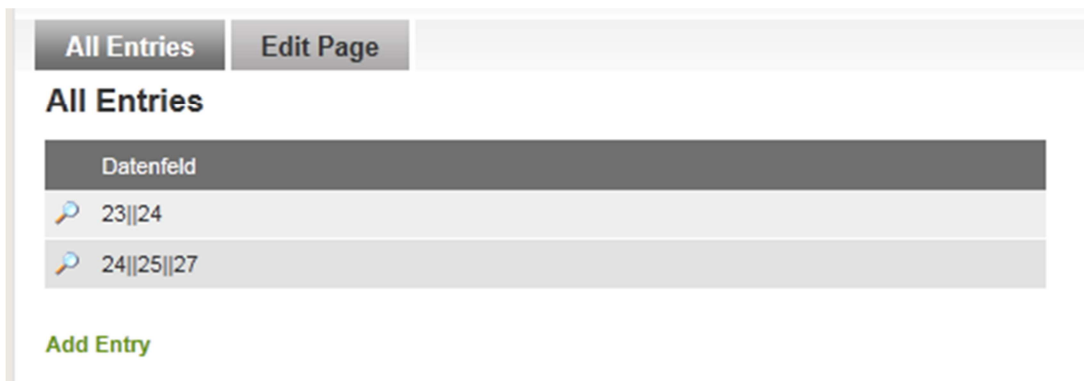


Place a view table on the start page of the application. Insert the magnifying glass  symbol for a link to the edit page and insert the column UserIDs.

Save and publish the application and open it in your web browser. Whilst entering a new record, the multiple selection shows the full names of the portal's users.



Choose any user and save the record. The view table shows the actual stored values, which are stored as data type *String* and are separated by 2 pipes "||".



This pipe-separated list can now be used in processes and the entries can be split to execute actions for matching records.