

**united
planet**


ix CENTER



UNITED PLANET INTREXX XTREME
RELEASE 4.5







Contents

1. The Areas of Intrex Center	4
2. Register and Change Intrex Server	4
3. Creating a New Portal.....	5
3.1. Select a Portal Template	5
3.2. Select a Webserver	5
3.3. Select a Database Server	6
3.4. Open the Portal.....	8
4. Main Menu	9
4.1. File Menu	9
4.2. Portal Menu.....	9
4.2.1. Import Portal.....	9
4.2.2. Export Portal	10
4.2.3. Portal Properties	11
4.2.3.1. Webserver.....	11
4.2.3.2. Ports.....	11
4.2.3.3. Proxies.....	12
4.2.3.4. Start Parameters	13
4.2.3.5. Options	13
4.2.3.6. Database.....	14
4.2.4. Refresh.....	14
4.3. Extras Menu	14
4.4. Help Menu.....	15



Writing Conventions

In this handbook, text passages will be displayed in *italics* when they refer to settings in the displayed dialogs. Menu items that are available in context menus can, in addition, always be selected from the main menu. Main menu items will not be described if they are not available in the context menu. A description of the general main menu items can be found in the  *Center* handbook. Programming code in the text will be displayed in the Courier font. Context menus can be opened by clicking with the right mouse button on the described element.

In the following, *<xtreme>* refers to your Intrex installation path; under Windows, for example, this is usually  *C:\xtreme*. On Linux, the normal install path is  */opt/xtreme/*. The following symbols will be used for designation of special kinds of information:

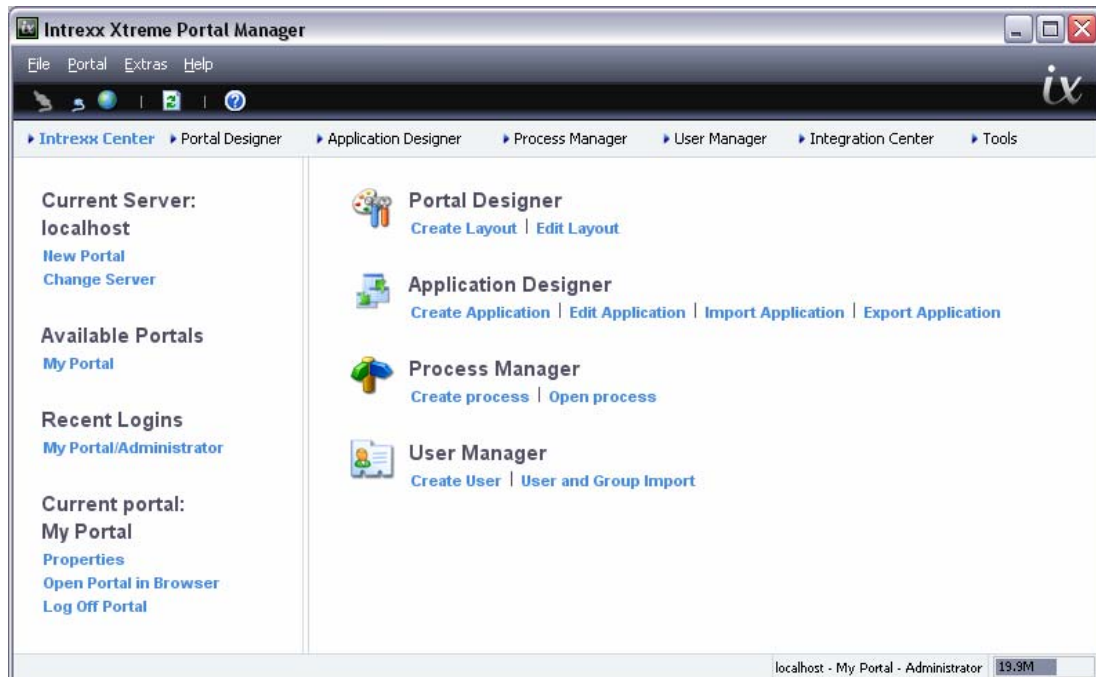
-  Important information
-  Tips and background information
-  References to additional information in an Intrex Xtreme handbook
-  Directories
-  URLs
-  Buttons in dialogs or assistants

Previous Knowledge

In order to understand this documentation, no special knowledge is required. You can find helpful information in the Intrex Xtreme handbooks  *Setup* and  *Start*.

1. The Areas of Intrexx Center

If you start the Portal Manager, you will automatically start in Intrexx Center.



In the *Current Server* area, the current server connection will be shown. With *New Portal*, a new portal can be created. *Change Server* allows a connection to a different portal server to be created.

In the *Available Portals* area, all portals located on the currently connected server can be opened via the link to the portal.

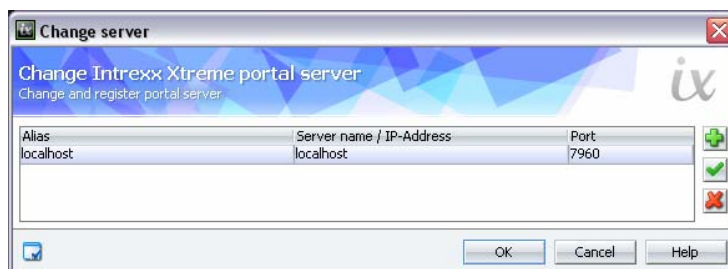
In the *Recent Logins* area, the users that were last logged in, as well as the portals on which they exist will be listed.

In the *Current Portal* area, the portal you currently edit in the Portal Manager can be opened in the browser. The properties and the possibility to log off are accessible here directly.

In the right-hand area, you will find quicklinks to important functions in the modules *Portal Designer*, *Application Designer*, *Process Manager*, and *User Manager*.


2. Register and Change Intrexx Server

If you are working directly on the Intrexx Xtreme Portal Server, after installing the Portal Manager, the *localhost* will automatically be entered to the list of current servers. If the Portal Manager is installed on a client, the server must first be registered. To do this, click the link to *Change Server*.



Click on *Add Server* if a server has to be registered. Existing server connections can be tested by clicking *Test Connection*. *Remove Server* will remove a server from the list.

In the column *Server name / IP-address* enter the server name or the server address. The system on which the Intrex Xtreme Portal Server is installed can be entered by name or by its IP address (such as *10.10.10.10*). The setting for *Administration port* will be set automatically and can in most cases be used without problems.

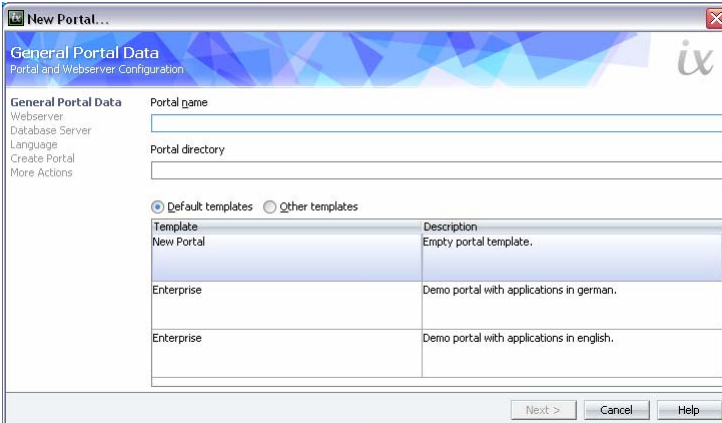
 If no connection to the server can be created, please ensure that the computer to which the Intrex Xtreme Portal Server has been installed is operational. Additional possible causes are problems with the network connection, a missing installation of TCP/IP, or a defective network cable. The *Intrex Xtreme Supervisor* service must also be started on the portal server. Please also check whether the administrator of the server has chosen a different administration port manually.

3. Creating a New Portal


In order to create a new portal, please click on *New Portal* in Intrex Center.


3.1. Select a Portal Template

In the following dialog, select a portal template. In the delivery package of Intrex Xtreme, the portal templates *New Portal* and *Enterprise* in german and english have been included. The Enterprise-Templates contain sample applications and data.

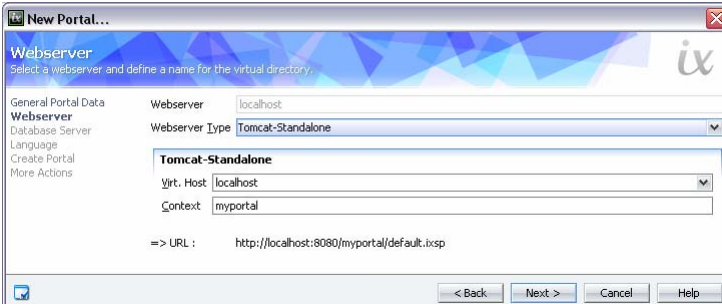


Template	Description
New Portal	Empty portal template.
Enterprise	Demo portal with applications in german.
Enterprise	Demo portal with applications in english.

In the *Portal Name* field, enter a name of your choice for the portal. All files and folders belonging to the new portal will be contained in their own subfolder under the  *<xtreme> \org* directory.

When you enter the portal name, the name will be automatically applied as the name for the subdirectory and entered to the *Portal Directory* field. Click  *Next* to continue.

3.2. Select a Webserver



Webserver: localhost
 Webserver Type: Tomcat-Standalone
 Virt. Host: localhost
 Context: myportal
 => URL: http://localhost:8080/myportal/default.ixsp

In this dialog, the settings for the webserver will be defined. Under *Webserver*, the current, local computer name *localhost* will be entered as default. Change this entry if the webserver will be located on a different computer system. Then select the desired webserver type in the *Webserver Type* list.

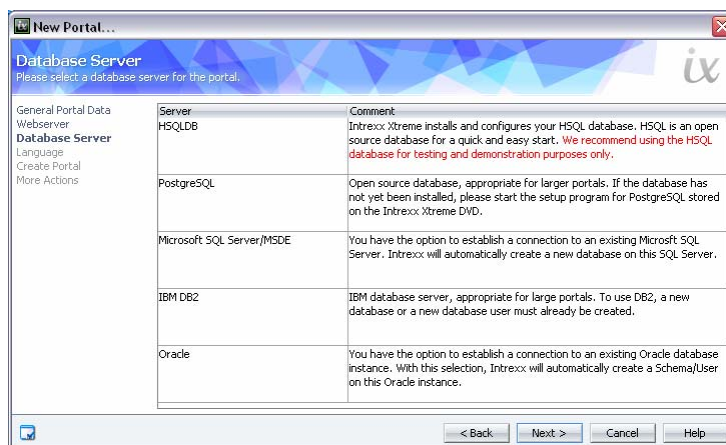
If you are using Tomcat Standalone, enter the desired host under *Virt. Host*. If using Internet Information Server, select the desired *Website*. Multiple websites can be created on a single Internet Information Server (so-called virtual servers, each possessing its own IP address). You can usually select the default website here. Additional websites that you have created will be also entered to the selection list and can be selected.


When using Tomcat Standalone, please enter the desired *Context*. When using Internet Information Server, the *Virtual directory* of the webserver can be changed here. Each website can publish contents from multiple directories. The directories can either be accessed from a local drive or over the network. A website can possess a base directory and any number of additional published directories. These published directories will be called *Virtual directories*.

To simplify URL addresses, the services will display all published directories for clients as a single directory structure. The base directory is the root directory of this virtual directory structure, and every virtual directory will be addressed as a subdirectory of the base directory. The actual subdirectories will naturally be available to clients in the same way.

If a virtual directory with the selected name already exists, the name in the dialog will be shown in red. In this case, please choose a different name. The *Created URL*, under which the new portal will be available, will be shown in the dialog under the selection lists.

3.3. Select a Database Server

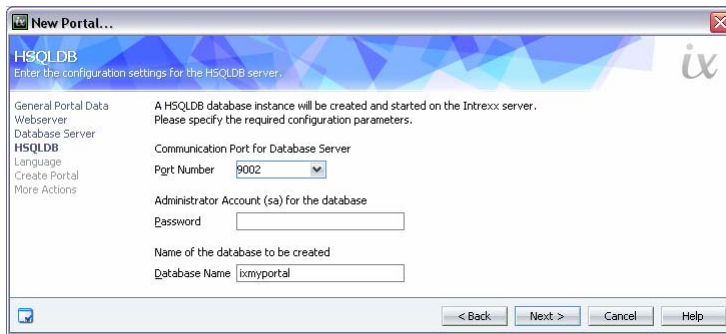


All database types that you have installed as components in the Intrex Xtreme setup program can be selected here. If no drivers are available for a database server, you will be notified of this with an error message. Click  *Next* to continue.

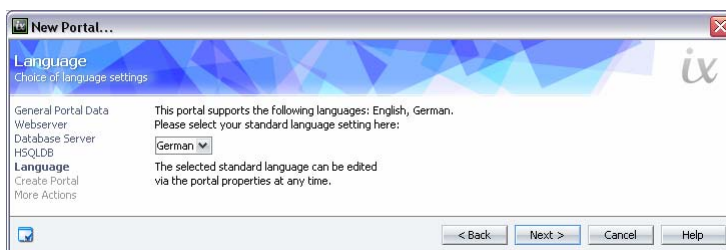
The following dialogs, which you will use to set up the connection to the database server, will vary and are described here using an HSQL database server as an example. For information on other database connections, please consult the in-program help files of Intrex Xtreme.



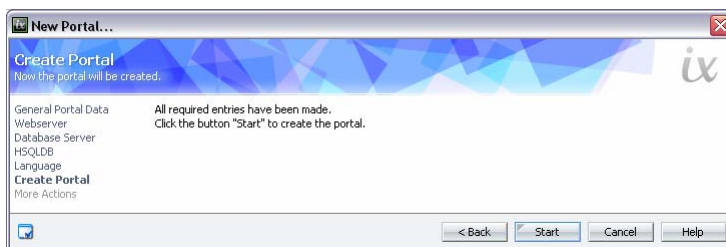
HSQL databases are best suited for testing purposes. Please use a different database type when using Intrex Xtreme in a production environment.



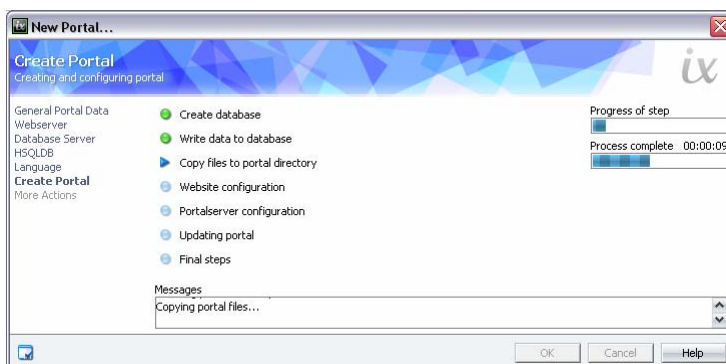
The *Port Number* will be identified and entered by Intrex Xtreme. Enter the password for access to the database server under *Administrator account (sa) for the database*. The *Database Name* will be automatically created by Intrex Xtreme using the portal name prefaced by the letters *ix*. You can change the database name if you wish. If the entries are complete, please click *Next*.



Select the desired default language setting for the portal. This setting can be changed later at any time via the portal properties.



Click *Start* here. The new portal will be created.

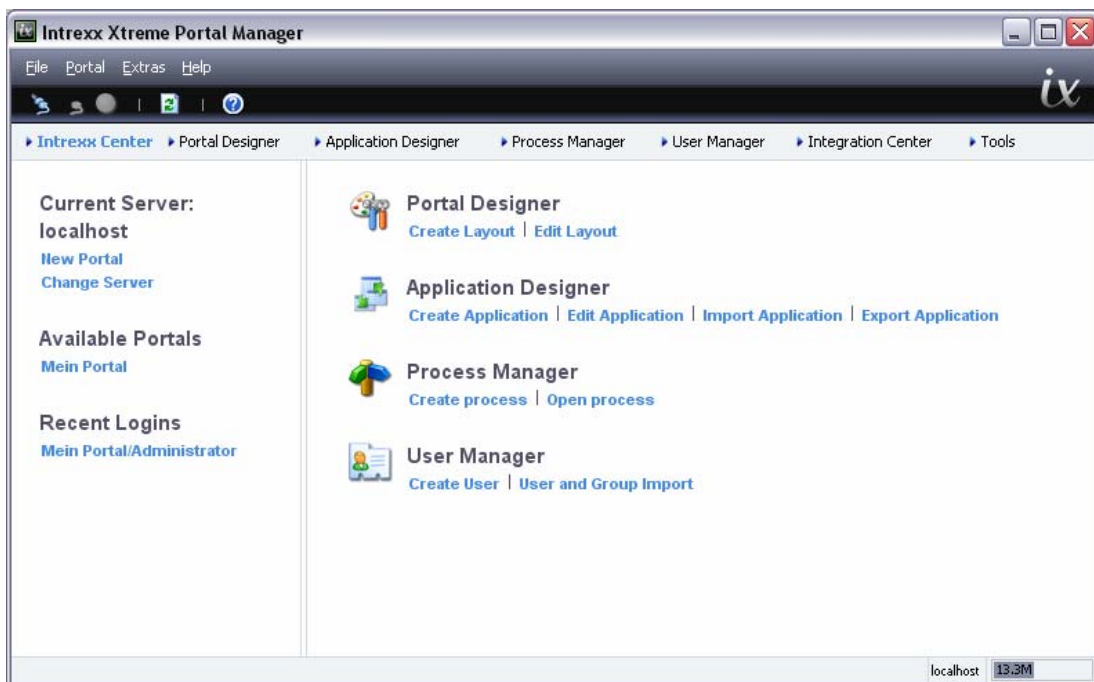




Click **OK** here.

3.4. Open the Portal

The new portal has now been entered to the Intrex Center into the *Available Portals* area. Clicking on this link will open it for editing.



Please log onto a newly created portal with the user name *Administrator*, leaving the password field blank.



The permissions of an administrator are described in detail in the *Permissions* handbook. For security reasons, this user should be assigned a password.

- With the button combination *Alt + period* in the *User Name* field, the user name *Administrator* will automatically be used for login to the Portal Manager and for login in the browser.

4. Main Menu

4.1. File Menu

Connect Portal Server

This menu item opens the dialog to log in to a portal.



First, select a portal. Next enter your *user name*, *password*, and the *domain* in which you wish to log in.

Disconnect Portal Server

This menu item will log off an opened portal. You will be notified of unsaved changes with a pop-up message.

Open Portal in Browser

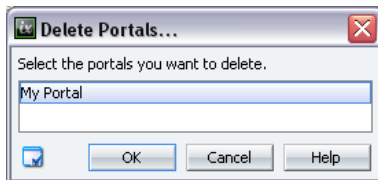
The currently connected portal will be loaded in the browser.


New Portal

A new portal will be created.

Delete Portals

With this menu item, portals can be deleted.



Select the portal and confirm with  *OK*. The portal database can not be deleted by Intrex Xtreme. If you no longer require the database, please delete it manually using its corresponding database manager.

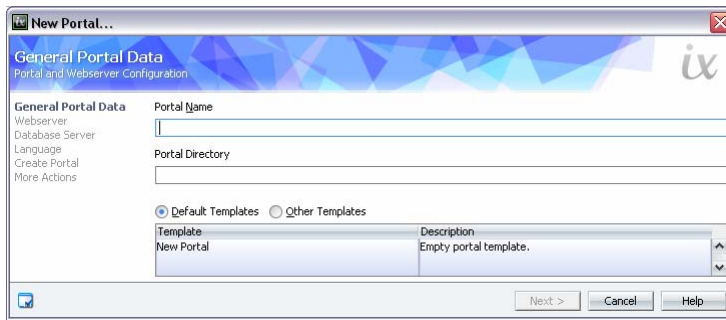
Close

Shuts down the Portal Manager.

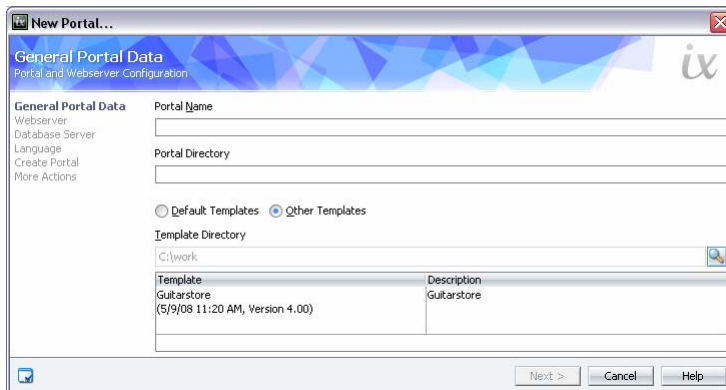
4.2. Portal Menu

4.2.1. Import Portal

Clicking on this menu item will open the following dialog.



If you wish to import a portal, please select the option *Other Templates* here.

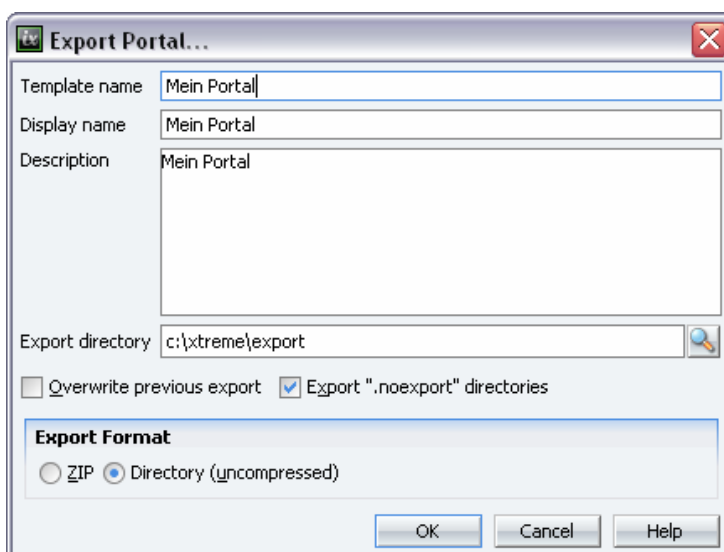


Enter the desired *Portal Name* here. All Intrex Xtreme portals will be administered in individual folders in the directory `xtreme\org`. Enter a name for this new *Portal Directory* here.


In the lower area, select the *Template Directory* in which the portal export can be found. All portal exports that are located in this directory will be listed in the lower area of the dialog. Select the desired portal in the list. To continue, click **Next**. Information on additional procedures can be found in the chapter [Creating a New Portal](#).

4.2.2. Export Portal


With this menu item, complete portals with their databases can be exported. To do this, you must be logged onto the portal and possess the appropriate access permissions.



Enter an *Export Name* (file name for the export file). The *Template Name* will be shown in the templates list when importing the portal. You can enter a short *Description* for the

portal. Using the  button and select the directory in which the export will be saved. The setting to *Overwrite previous export* allows the most recent previous export to be overwritten by the new export. Two *Export formats* are available: the portal can be exported as a ZIP file or as an uncompressed directory.

Individual directories can be excluded from the export by creating a file in the directory with the name *.noexport*. Directories that have been excluded in this way from the export will be exported anyway if the setting to *Export .noexport directories* has been selected.

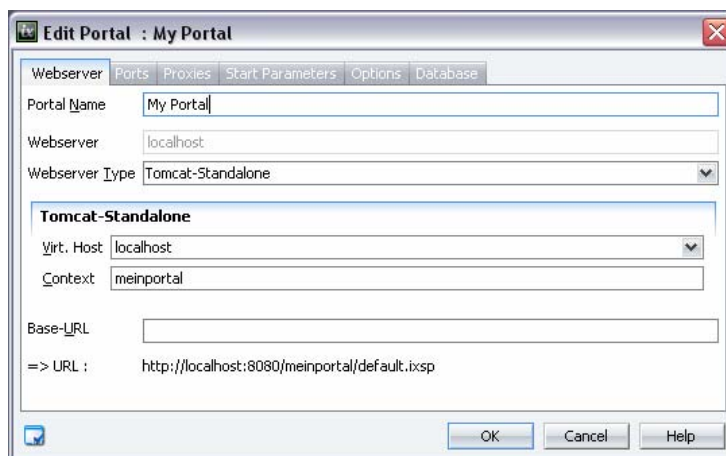
By clicking  *OK*, the export will be started.

A portal export contains all applications, as well as data, layouts, users, and all processes in the portal.

4.2.3. Portal Properties

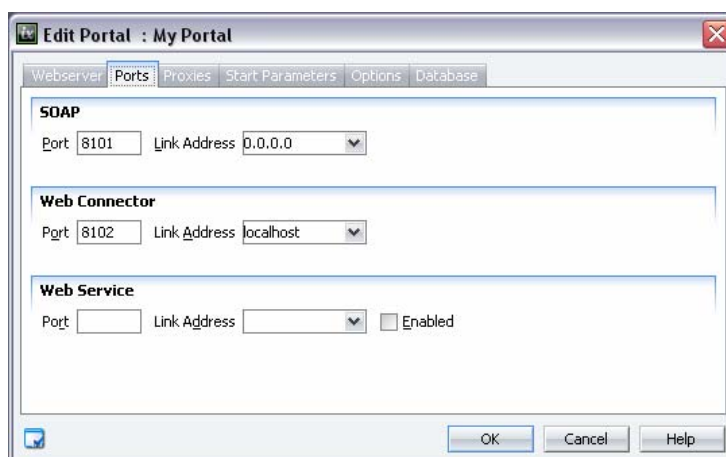
In the menu *Portal/ Portal Properties* you have direct access to the properties of the portal currently open.

4.2.3.1. Webserver



You can find a description of webserver properties in the [Creating a New Portal](#) chapter.



4.2.3.2. Ports



Communication between the Portal Manager and the corresponding portal on the portal server occurs via the *SOAP Port*. This setting must only be changed if the port in question is already in use. Usually, you can assume that the suggested port is available.



Communication between the web server and the corresponding portal occurs via the *Web Connector Port*. This setting must only be changed if the port is already in use. As a rule, you can assume here as well that the suggested port is available.

The port and interface address for *Web Services* must be entered for Intrex Xtreme Web Services to be used. The *Active* setting will enable these Intrex Xtreme Web Services.

All interface addresses can either be entered as an IP or a server name. Additional information on this topic can be found in the  *Tools* and  *Application Designer* handbooks.

4.2.3.3. Proxies









-  *Add Proxy* adds an additional proxy to the list.
-  *Delete* removes the highlighted entry from the list.

For newstickers and WSRP portlets to access the internet, a proxy must be activated. Clicking in the first column will activate or deactivate a proxy. For all additional functions of Intrex Xtreme, a proxy must only be activated if, on your network, access to the internet is controlled via a proxy server and/or no direct connection to the internet is possible. The setting refers always to the path from the portal server.

Select the *Proxy Type* in the second column. In the third column, enter the server name or the IP address. The port must only be changed if port 8080 is already in use.

In the *Rule* column, a rule can be entered for the connection. Please note that certain characters possess special meaning in regular expressions, especially the characters `.?*`. These characters must be protected by a backslash prefixing them, which serves as an escape character, although this is not always necessary for the period, which stands for an arbitrary character, i.e. including the period itself. `.*` serves as a wildcard for an arbitrary character string (period followed by a star).

Example:

1.  `http://parilicium\\.spec\\.unitedplanet\\.de:8888/services.*`
accepts exactly the URLs that begin with
 `http://parilicium.spec.unitedplanet.de:8888/services.`
2.  `http://parilicium.spec.unitedplanet.de:8888/services.*`
accepts exactly the URLs that begin with
 `http://parilicium.spec.unitedplanet.de:8888/services.`
3.  `http://.*services/.*_` accepts exactly the URLs that begin with
 `http://` and contain `/services/`.

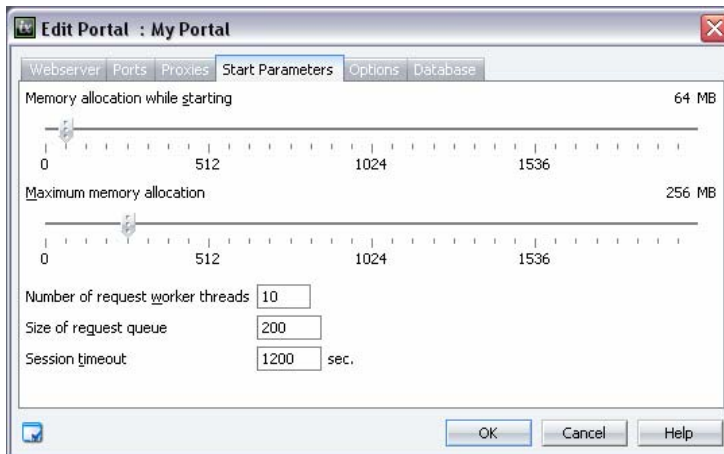
For URI syntax, see also [2]:

reserved = ";" | "/" | "?" | ":" | "@" | "&" | "=" | "+" | "\$" | ","
mark = "-." | "_" | "." | "!" | "~" | "*" | "" | "(" | ")"

[1] [_http://java.sun.com/javase/6/docs/api/java/util/regex/Pattern.html](http://java.sun.com/javase/6/docs/api/java/util/regex/Pattern.html)

[2] [_http://www.faqs.org/rfcs/rfc2396.html](http://www.faqs.org/rfcs/rfc2396.html)

4.2.3.4. Start Parameters



Here you have the ability to define start parameters, which will optimize the performance of the portal. With the sliding bars, you will set how much memory space the portal will be assigned at start and how much it can use as maximum.

- ⓘ Please note that Windows systems can only assign a maximum of 2,048 MB of memory. For Intrex Xtreme installations to 64 bit systems, please increase the maximum memory allocation to 384 MB.

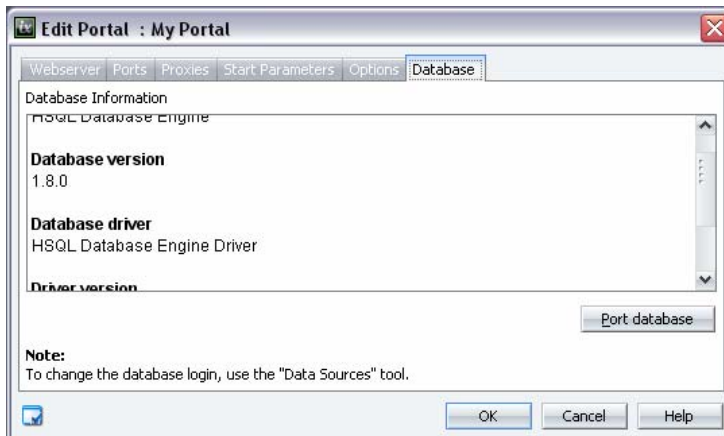
Under *Amount Request workerthreads*, define how many worker threads will be prepared for the handling of queries and responses at the server side. A worker thread will become active as soon as a request has been placed in the queue. *Size of request queue* allows you to define the number of requests that can be placed in the request queue. The preset values can usually be used here. Under *Session timeout*, enter the number of seconds, after which an inactive session will be automatically closed.

4.2.3.5. Options



The setting to *Activate Messenger* activates or deactivates the chat feature in the portal. Under *Messenger polling interval* you will define the number of seconds, after which time intervals the server will be queried for new messages. *User tracking* turns on user-specific tracking in the *Statistics* system application. *Yellow fade* emphasizes, using a partial refresh (Ajax), changes to pages for a short time in yellow.

4.2.3.6. Database



In the portal properties, on the *Database* tab, you will be informed of the database type, the database version, the current driver, the driver version, the database name, and the user name that is used to access the database.

By clicking *Port Database*, the portal database can be changed, such as from a test database to a different database type. The current database will first be exported by Intrexx Xtreme. Next, the new database will be created and all data transferred to it. Information on the possible settings for the following dialogs can be found in the [Creating a New Portal](#) chapter.

After porting, click *OK*. The portal is now connected to the newly created database. All entries will be immediately entered to this database.

4.2.4. Refresh

With this menu item, the list of existing portals in Intrexx Center will be refreshed.

4.3. Extras Menu

Country Settings

Information on country settings can be found in the *Multilingual Portals* handbook.

Preset Texts

With this menu item, standard texts like system messages, specific template texts, or metatags can be entered and edited in multiple languages. Information on this topic can be found in the handbook *Multilingual Portals*.

Create GUID

With the menu *Create GUID* a GUID of the currently selected element will be created and copied to the clipboard.

Editing Menus – The Menu Designer

With the Menu Designer, you will arrange the portal menu and define the permissions for access to menu items. Information on the Menu Designer can be found in the *Portal Designer* handbook.

Portal Permissions

The permissions to administrate the portal and the main portal page, as well as the permissions to individual modules and the messenger will be controlled here. Detailed information can be found in the *Permissions* handbook.

Switch Portal Server

The portal server can be changed here.

Administrate Administrator Logins

Everything on the topic of administration logins can be found in the [Permissions](#) handbook.

License Manager

All information on the licensing for Intrex Xtreme and the products of the Studio Series can be found in the [Setup](#) handbook.

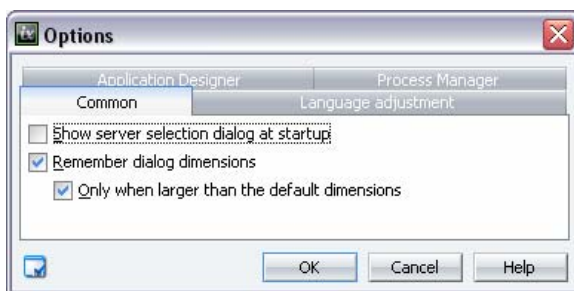
Software Update

See how a software update can keep your systems up-to-date with the [Start](#) handbook.

Module Bar

This setting will anchor the module bar in Intrex Xtreme at the top, bottom, right, or left of the screen.

Options



The setting to *Show server selection dialog at startup* allows the server to be selected immediately upon starting the Portal Manager.

The setting to *Remember sizes of dialogs* will cause the sizes of dialogs, after they have been changed by dragging the borders with the mouse, to be reused when a dialog is loaded again. If the *Only if larger than default dimensions* setting is selected, the size will only be reloaded at a changed size if it is larger than the standard settings.

Information on the additional options tabs can be found in the handbooks [Multilingual Portals](#), [Application Designer](#), and [Process Manager](#).

4.4. Help Menu

In this menu, you will find the in-program help for Intrex Xtreme. The handbooks are also available here.