




# **ix** INTEGRATION CENTER



UNITED PLANET INTREXX XTREME  
RELEASE 4.5







**Contents**

<b>1. General</b> .....	<b>4</b>
<b>2. BizWalker</b> .....	<b>4</b>
2.1. Connections .....	4
2.2. Activity.....	13
<b>3. Link Integrator</b> .....	<b>14</b>
<b>4. FileWalker</b> .....	<b>15</b>
<b>5. Office Integration</b> .....	<b>17</b>
<b>6. Data Sources</b> .....	<b>17</b>
<b>7. Web Services</b> .....	<b>17</b>
<b>8. WSRP Integrator</b> .....	<b>18</b>
8.1. Registering a New Provider .....	18



### Writing Conventions

In this handbook, text passages will be displayed in *italics* when they refer to settings in the displayed dialogs. Menu items that are available in context menus can, in addition, always be selected from the main menu. Main menu items will not be described if they are not available in the context menu. A description of the general main menu items can be found in the  *Center* handbook. Programming code in the text will be displayed in the Courier font. Context menus can be opened by clicking with the right mouse button on the described element.

In the following, *<xtreme>* refers to your Intrex installation path; under Windows, for example, this is usually  *C:\xtreme\*. On Linux, the normal install path is  */opt/xtreme/*. The following symbols will be used for designation of special kinds of information:

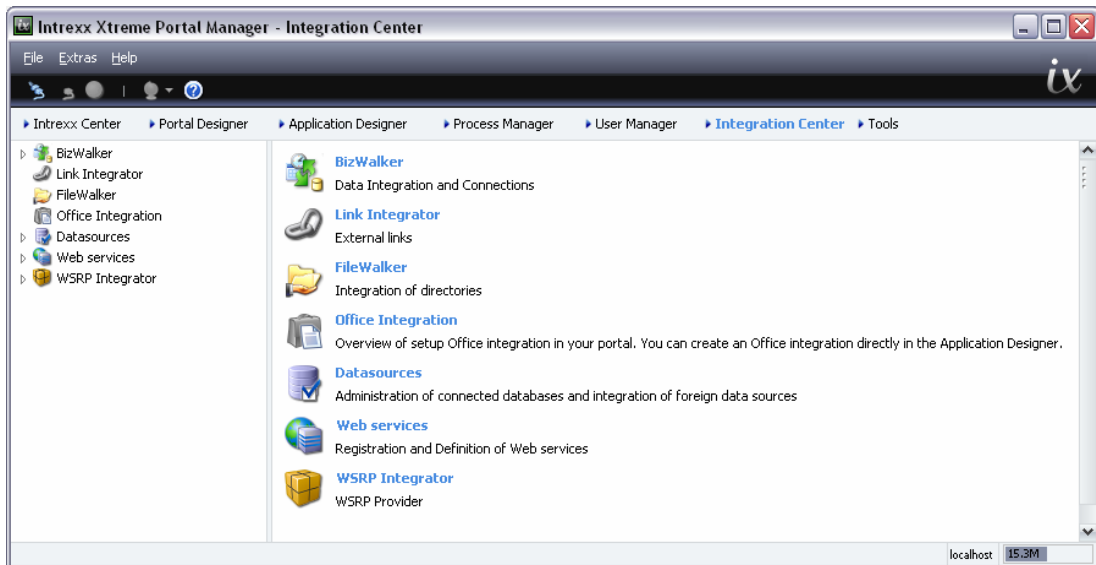
-  Important information
-  Tips and background information
-  References to additional information in an Intrex Xtreme handbook
-  Directories
-  URLs
-  Buttons in dialogs or assistants

### Previous Knowledge

In order to understand this documentation, no previous special knowledge is required. You can find helpful information in the Intrex Xtreme handbooks  *Center* and  *Application Designer*.

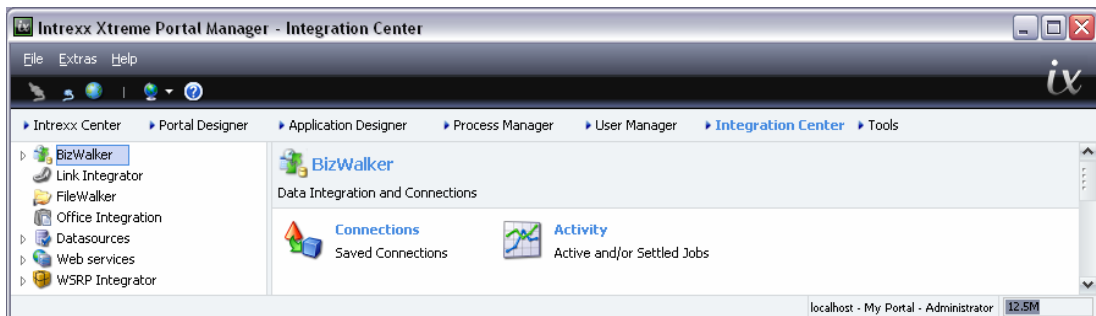
1. **General**

In the *Integration Center* module, you will find different functions that will help you integrate data into the portal.



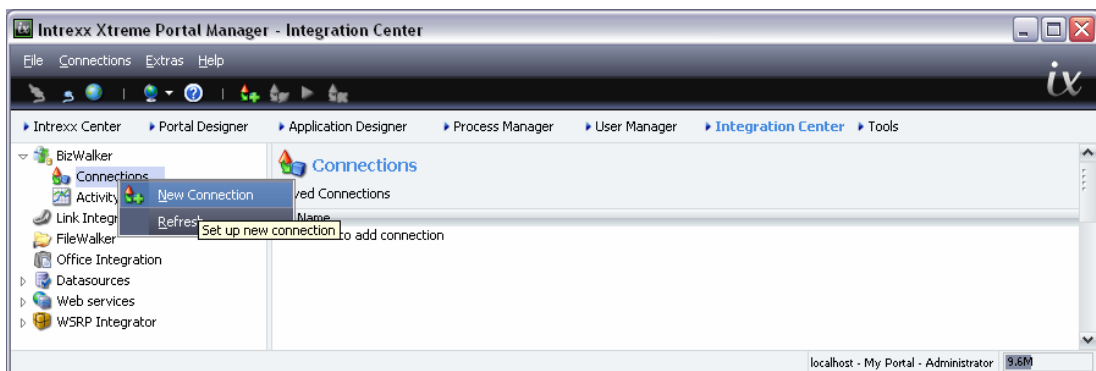
If you are connected to a portal, you can reach the individual functions by clicking the corresponding link in the left-hand area of the module.

2. **BizWalker**



With *BizWalker*, application data can be imported and exported. The import of third-party data is also possible with this function. The data transfer can be set up to be time-controlled. *BizWalker* will then execute the import and/or export regularly in the background.

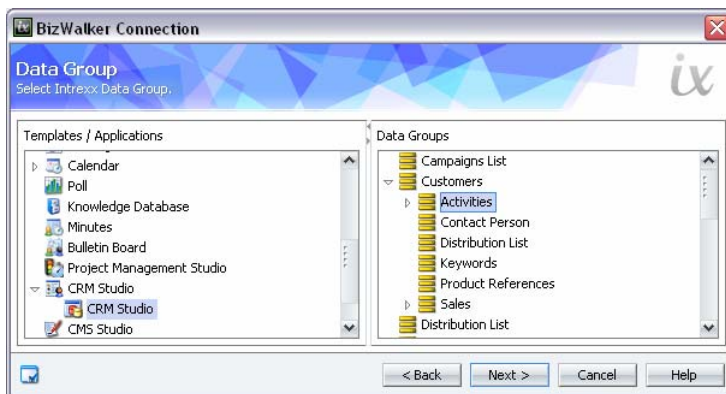
2.1. **Connections**



A new connection can be set up via the context menu item *New Connection* or via the *Connections* menu item.

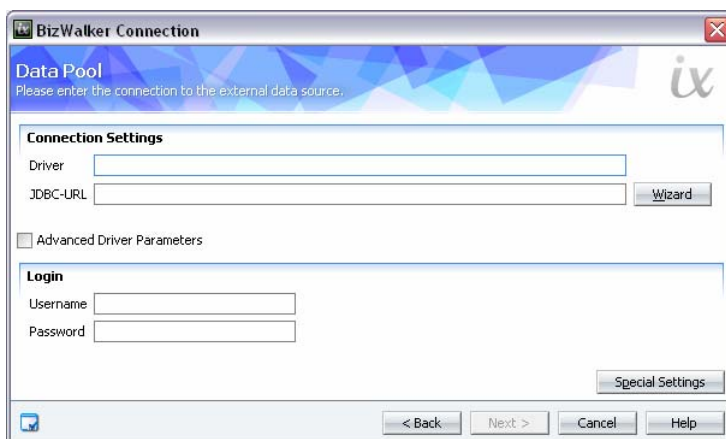


Enter a *Name* for the connection here. With the *Data Imported to Intrex* setting, data will be imported to the currently connected portal. The setting *Data Exported from Intrex* will export portal data. Click *Next*.

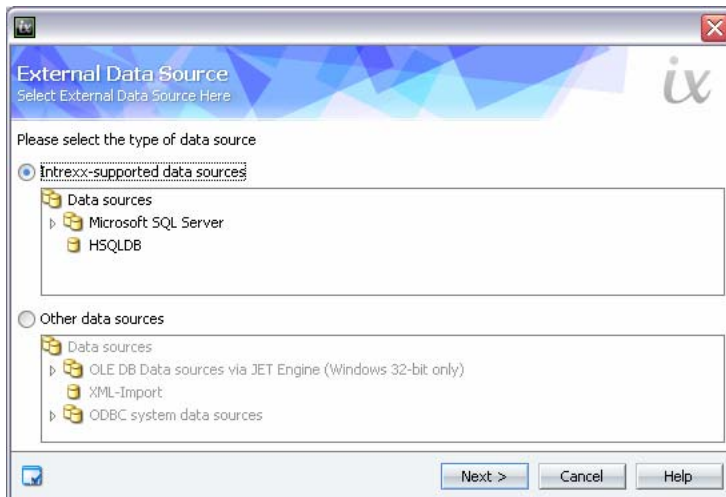


In the *Templates / Applications* column, all applications will be grouped by template. If an application has been entered to the portal based on a template, an arrow icon will be shown to the left of the template name. Clicking this icon will show the applications contained within it. Select the desired application here.

In the *Data Groups* column, all data groups of the application will be shown. Select the desired application here. Click *Next* to continue.



Enter the *Driver* and the *JDBC-URL* of the data pool, to which data will be imported and/or from which data will be exported. If authentication is required, enter the *User Name* and the *Password* here as well. With *Wizard*, you can access an assistant that will help you with the configuration. However, it cannot be guaranteed that, for each external data source, an assistant mechanism has been prepared.



With the *Intrex-supported data sources* setting, all database drivers that were installed during the Intrex Xtreme setup process will be listed as database types (see [Setup handbook](#)). Select the database type of the external data source here.

The *Additional data sources* setting gives you access to OLE DB data sources/ADO data sources like Access, dBase 5.0, dBase III, dBase IV, Excel 3.0, Excel 4.0, Excel 5.0-7.0, Excel 8.0/9.0, Exchange, HTML import, Lotus WK1, Lotus WK3, Lotus WK4, Paradox 3.x, Paradox 4.x, Paradox 5.x, and text. *XML imports* and a connection to *ODBC system data sources* are also possible.

- When importing from a text file (\*.txt, \*.csv) via the OLEDB interface into an Intrex Xtreme application, leading zeros in a field otherwise filled only with numbers will not be imported, if the assigned target field in the application has the data type *string*.

This characteristic of the OLEDB interface cannot be influenced by Intrex. It deals with fields filled only with numbers automatically as *integer* fields, but there is also a configuration file named *schema.ini* in the same directory as the text file, which defines the data type.

In a text editor (Notepad, for example), create a text file named *schema.ini* in ANSI format. For each file in this directory, create a section that describes the properties of a text file that looks like the one below:

```
[table.txt]
ColumnNameHeader=True
Format=Delimited(;)
MaxScanRows=25
CharacterSet=ANSI
Col1=Feld1 Char
Col2=Feld2 Integer
Col3=Feld3 Float
```

Description:

Line 1: File name in brackets (required)

Line 2: Column names exist (True) or not true (False) (required)

Line 3: Divider character (required)

Line 5: Character set


Lines 6 through 8: Names and data types of the individual columns. Permitted values are *Bit*, *Byte*, *Char*, *Currency*, *Date*, *Float*, *Integer*, *Longchar*, *Short* or *Single*.

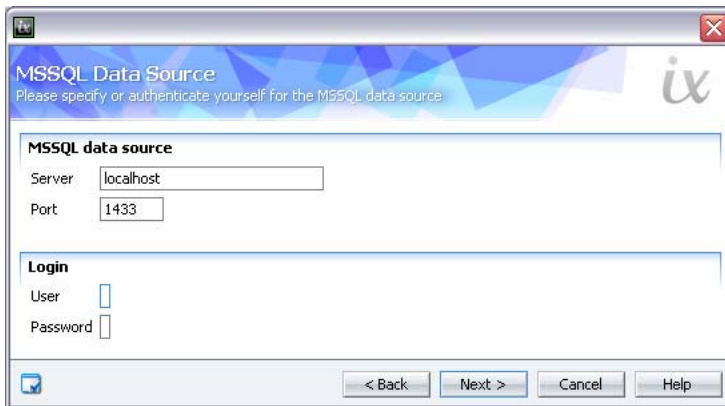
For date data types, use the format *dd-mmm-yy*, *mm-dd-yy*, *mmm-dd-yy*, *yyyy-mm-dd*, or *yyyy-mmm-dd*. (*mm* describing numbers for months and *mmm* letters for months.)


A field that only contains numbers with leading zeros, and must be imported with

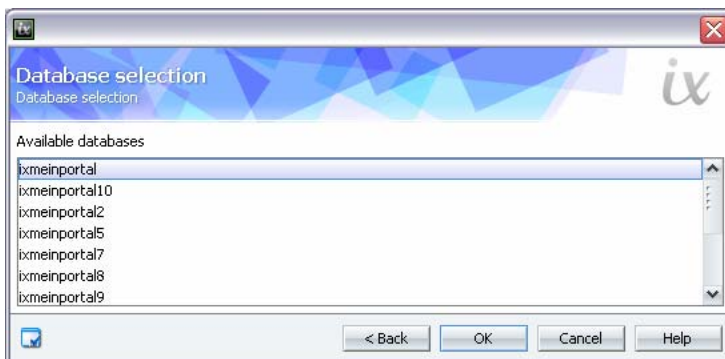
the zeros into Intrex, must be defined as *Char*.


Additional information can be found at: [msdn.microsoft.com](http://msdn.microsoft.com).

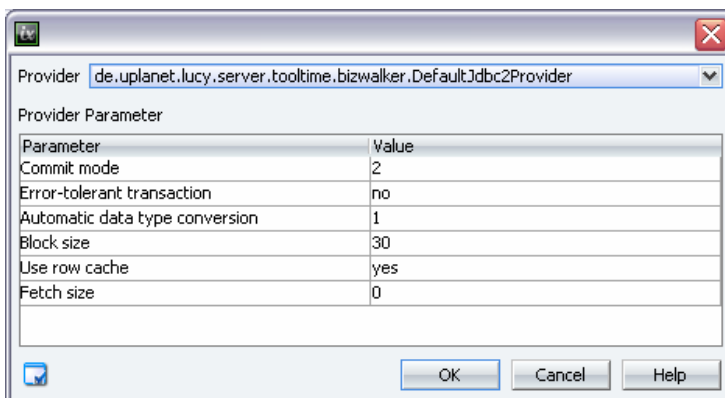
After selecting the data source, click  *Next*.



The following dialogs will vary by database type. Please consult the in-program help for Intrex Xtreme. If all entries for data source connection are complete, please click  *Next*. The wizard will now fill out the fields *Driver* and *JDBC URL* for you.





Depending on the driver selected, the *Advanced Driver Parameters* setting allows additional parameters to be set.  *Special Settings* allows a BizWalker plug-in to be assigned.

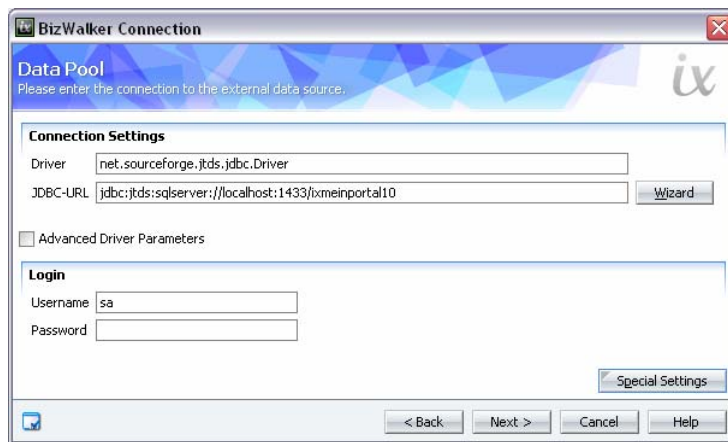


In the *Provider* selection list, the BizWalker plug-in, depending on the external data source, will be assigned. The default setting is *de.uplanet.lucy.server.tooltime.bizwalker.DefaultJdbc2Provider*. The following providers are also available:

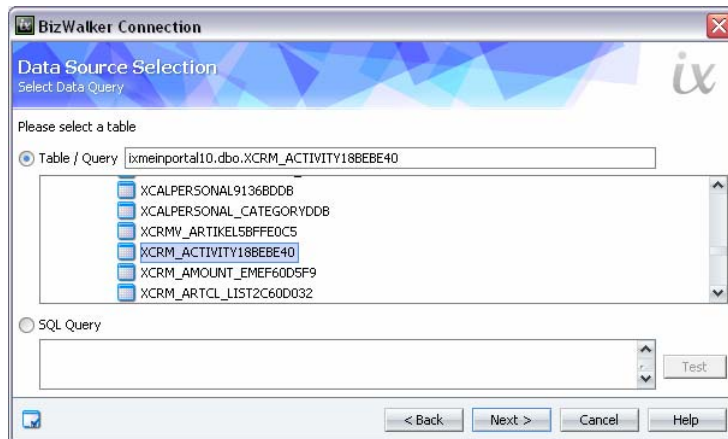
- *de.uplanet.lucy.server.tooltime.bizwalker.DefaultJdbc2Provider*  
Plug-in for the most common JDBC2 supported/conforming JDBC drivers, such as for MS SQL Server, PostgreSQL, SAP DB, etc.
- *de.uplanet.lucy.server.tooltime.bizwalker.DefaultJdbc1Provider*  
Plug-in for JDBC1 supported JDBC drivers. This plug-in should be selected if a JDBC driver does not support sufficient (or any) features of JDBC2, such as when updatable resultsets do not function. This applies, for example, to HSQL.
- *de.uplanet.lucy.server.tooltime.bizwalker.OracleProvider*  
Plug-in for Oracle databases



 All additional options in this dialog deal with special settings for tuning and/or error detection. Please only change these settings in consultation with United Planet Support. United Planet takes no responsibility for errors resulting from incorrect settings in this dialog.

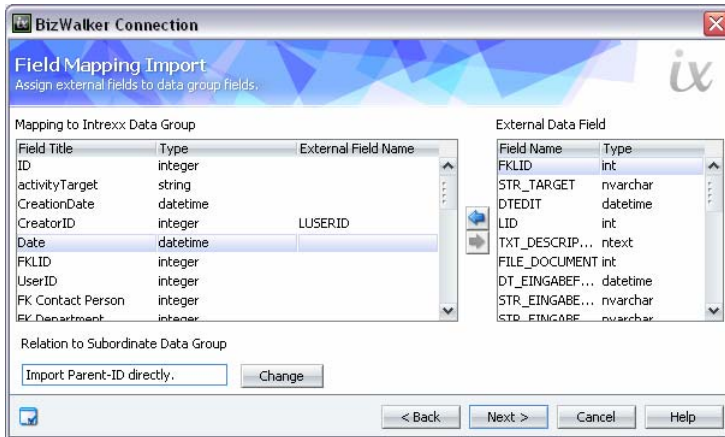
Click on  *OK* to apply the settings.



Click  *Next* here.

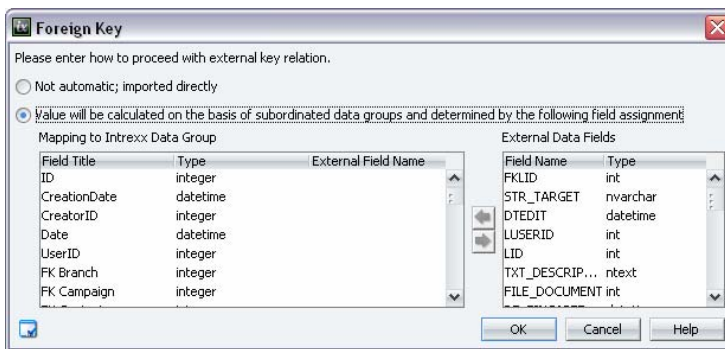


With the *Table/Query* option, all database tables and queries of the connected data source will be listed. Select the desired table and/or query here. With the option for *SQL Query*, the data source can also be directly queried. Clicking  *Test* will send a test query. If this query results in errors, a corresponding message will be output. Click  *Next* to continue.



In the table on the left, all fields of the Intrex Xtreme data group will be listed, and all external fields will be listed on the right. Please highlight the fields that you wish to assign, both in the left-hand and in the right-hand table, and create the assignment with the help of the arrow buttons.

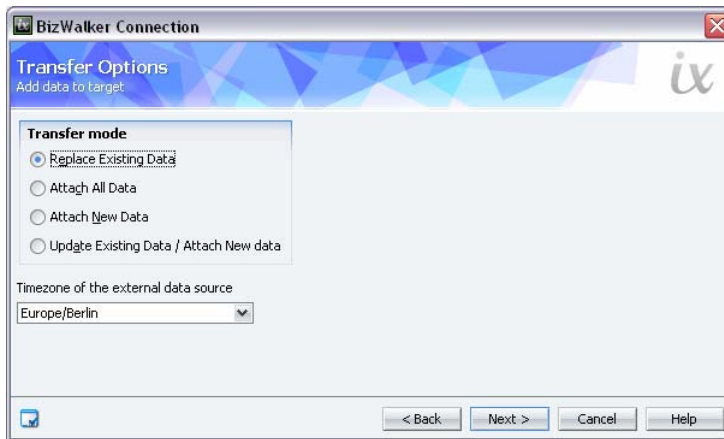
If a super-ordinate data group exists for the internal data group, *Change* will be activated. This allows you to define the field that will serve as a key for the assignment of the external data records to a data record of the super-ordinate Intrex Xtreme data group.



Click *OK* here.



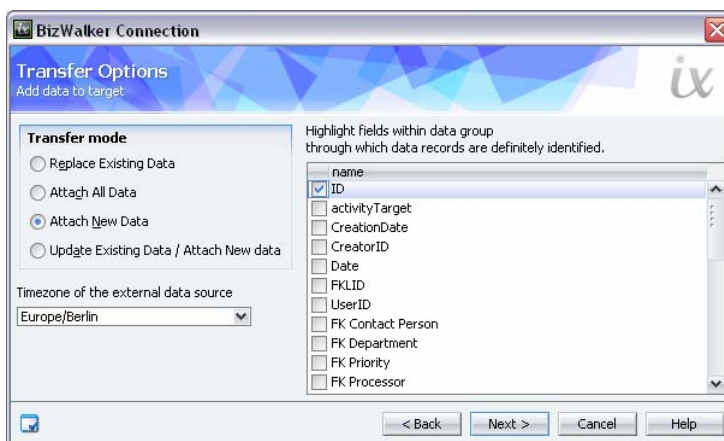
To continue, click *Next*.



With the transfer option *Replace existing data*, all data in the target data group will be replaced.

The option to *Attach all data* will allow you to keep existing data in the target data group. The transferred data will be added to the file.

Selecting the option to *Attach new data* will show all fields of the target data group in the right-hand area of the window. Select the field here whose value can be used to identify a data record as new. This field must be connected with a corresponding field of the target data group in the field assignment in order for the value to be transferred from the source data pool upon each import.



The option to *Refresh existing data, attach new data* corresponds to the *Attach new data* option, with the difference being that existing records in the target data group will be updated, i.e. refreshed, if changes were made to the source data group since the last update. Intrex Xtreme saves all date values in GMT (Greenwich Mean Time) to the database. Select the *Time zone of external data source* here. Click [Next](#) to continue.

**BizWalker Connection**

Execution time  
Execution time definitions

Automatic execution from 7/27/08 10:56 AM to 7/27/08 10:56 AM

Standard rule  Manual rule  Multiple manual rules

**Time**

At 10:56 O'clock

Repeat every 1 hours and there every 10 minutes

**Frequency**

Daily every 1 days

Weekly

Monthly

Scheduler rule: \* \* \* \* \* 10:56:00 \* \* \* \* \*

< Back Next > Cancel Help

If you wish to *Automatically execute* the BizWalker job, a starting and ending date can be entered here. The job will automatically be run in the background in the entered time frame and/or from the starting date.

With the *Standard Rule* setting, the time and frequency of the execution time can be entered. When using this, the scheduler rule in the lower part of the dialog will be automatically refreshed.

Selecting the *Manual Rule* setting allows a *Scheduler Rule* to be manually entered. Because there are a virtually unlimited amount of possible rules, it is not possible to enter every desired rule via the standard dialog. With the *Multiple manual rules* option, an edit field will be shown, in which you can enter more complex rules.

**BizWalker Connection**

Execution time  
Execution time definitions

Automatic execution from 7/27/08 10:56 AM to 7/27/08 10:56 AM

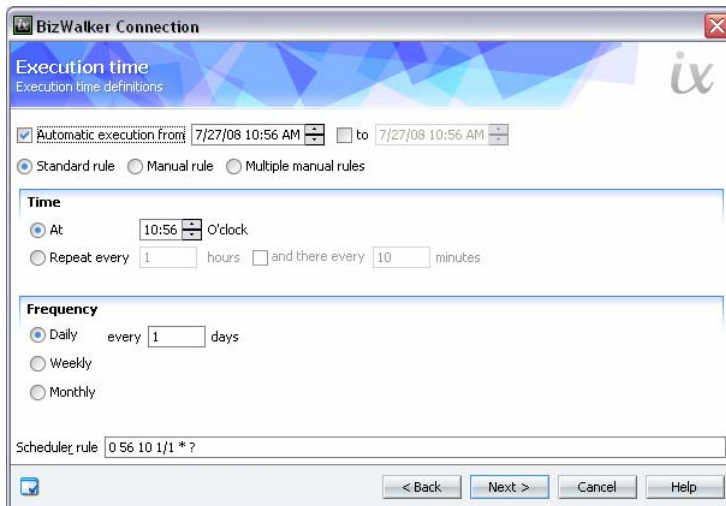
Standard rule  Manual rule  Multiple manual rules

Enter the rules here. Each line corresponds to one rule.

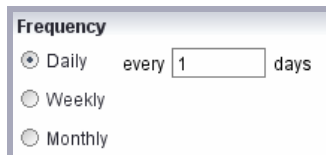
< Back Next > Cancel Help

Information about the construction of these rules can be found at [www.opensymphony.com/quartz/wikidocs/Tutorial.html](http://www.opensymphony.com/quartz/wikidocs/Tutorial.html).  
The detailed description of CronTrigger expressions can be found at [quartz.sourceforge.net/javadoc](http://quartz.sourceforge.net/javadoc) (CronTrigger class).

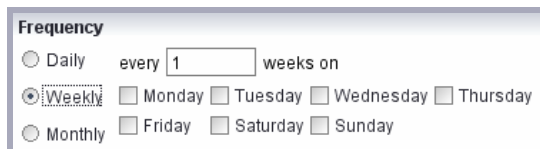
Select the *Standard Rule* option to show the additional settings in the dialog.



When using automatic execution, enter the time at which the data transfer will be executed with a BizWalker job. Define the execution interval, either daily, weekly, or monthly, at which the job will begin. Depending on whether you select a daily, weekly, or monthly execution, the dialog's appearance will differ.




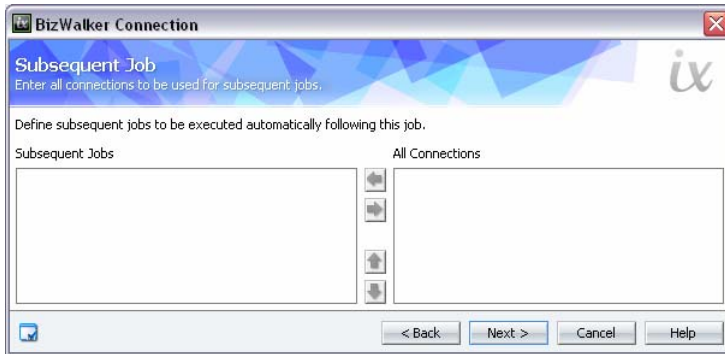
When selecting the *Daily* setting, in the *every ... days* field, enter after how many days the job should be repeated.



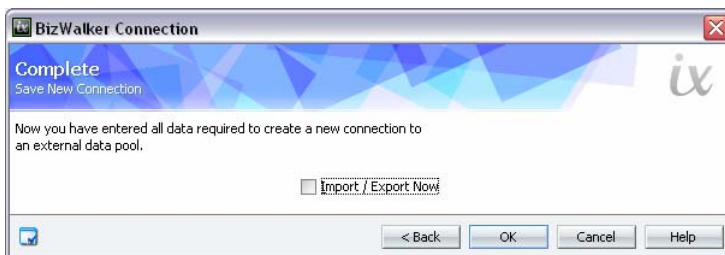
With the *Weekly* setting, enter in the *every ... weeks* field after how many weeks the job should be repeated. A weekday must also be entered. Without entering the weekday, the BizWalker job will not be run.



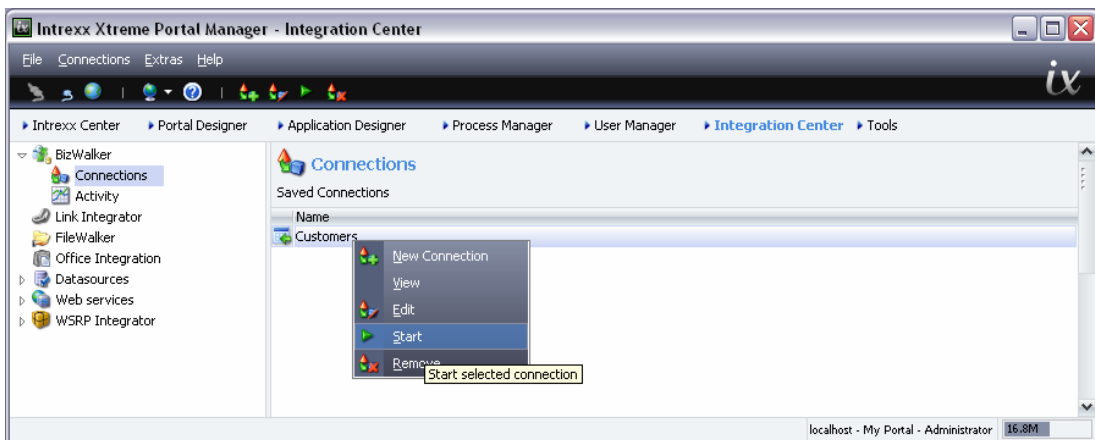
With the *Monthly* setting, in the *every ... months* field, enter after how many months the job should be repeated. You must additionally enter the day on which the execution will be repeated. In this, the entry can be made as a number (first, second, third day, etc.), or as a weekday (first Monday of the month, second Saturday of the month, etc.). Without this entry, the job will not be run. Click  *Next* to continue.



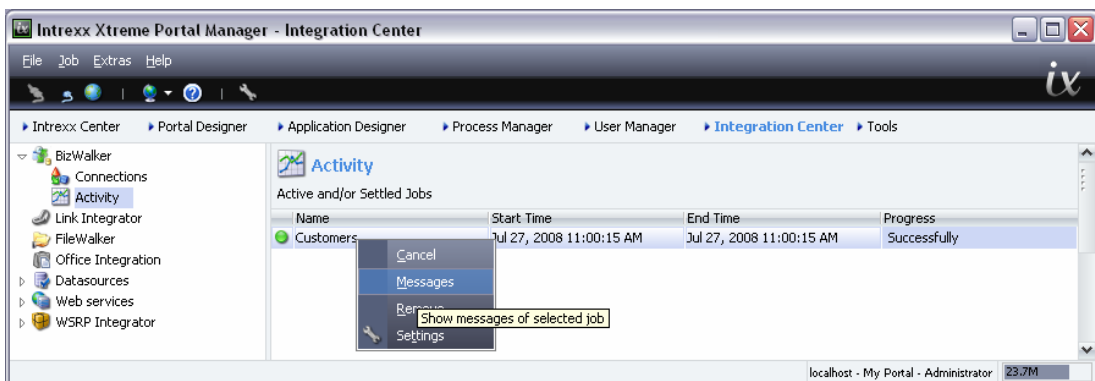
Existing connections can automatically be executed after completion of the current BizWalker job here. Select the desired connection from the *All Connections* list and move it with the help of the arrow buttons to the *Subsequent Jobs* list.



The setting to *Import/Export Now* will run the BizWalker job immediately after clicking *OK*. The new connection will now be shown in the list of saved connections. It can be edited, viewed, or deleted via the context menu. Additionally, the data transfer can be started here.



## 2.2. Activity



Active and completed data transfer jobs will be summarized here with their names, starting and ending times, and progress. The progress of a job will be output in percent while it is running, and an error-free completion will display *Successfully*. Please check your connection settings if a job does not complete free of errors.

Via the context menu item *Cancel*, a job that is currently running can be stopped.


The context menu item *Messages* will show details about the currently selected job in an additional window.



The *Remove* context menu item deletes a summary. The connection will remain in place and can be executed again. *Settings* will open an additional window.

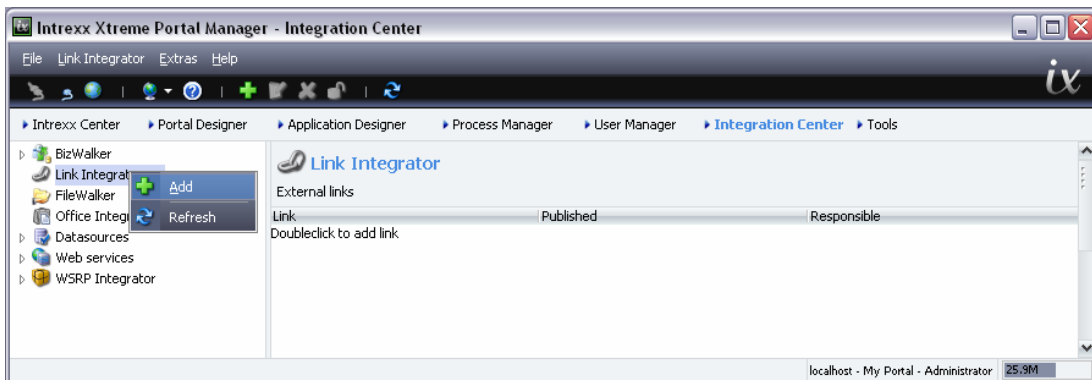


*Show Latest Job Message Only* has the effect of showing only the summary of the last time this job was executed, rather than a list of all the times a connection has been executed.

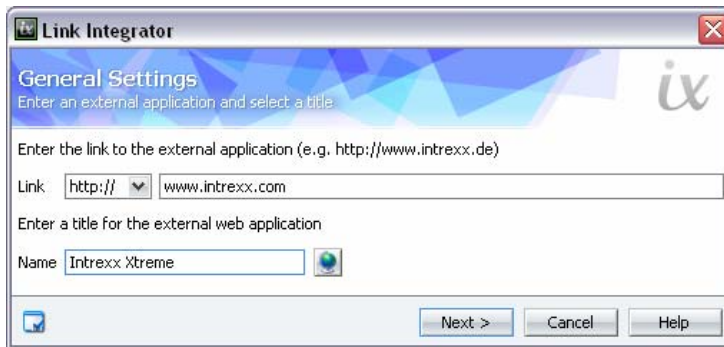
 Before first running a new connection, please always create a database backup. Errors made in the settings can, in certain circumstances, lead to a loss of original data. United Planet can offer no support in this case.

### 3. Link Integrator

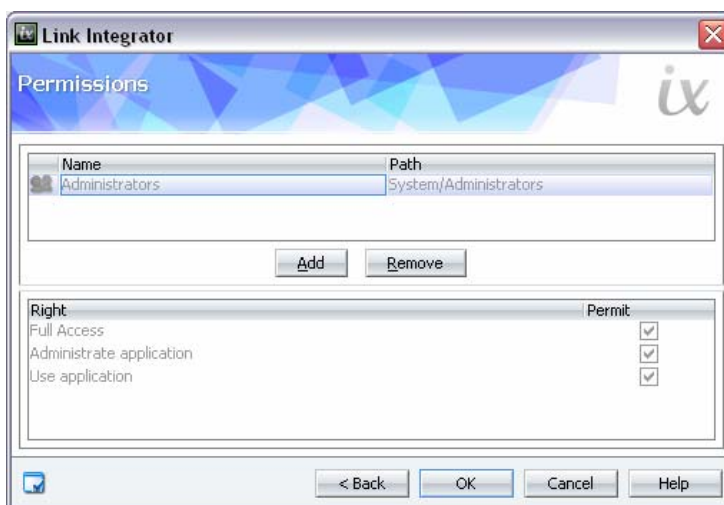
With the *Link Integrator*, external websites will be loaded in the portal.



The *Add* context menu item allows a connection to be created.



In the selection list, select the protocol with which the page or application can be reached. In addition, enter the fully qualified path. Each connection will, like an application, be shown in the portal with its own link. Enter the name here, then click *Next* to define access permissions.



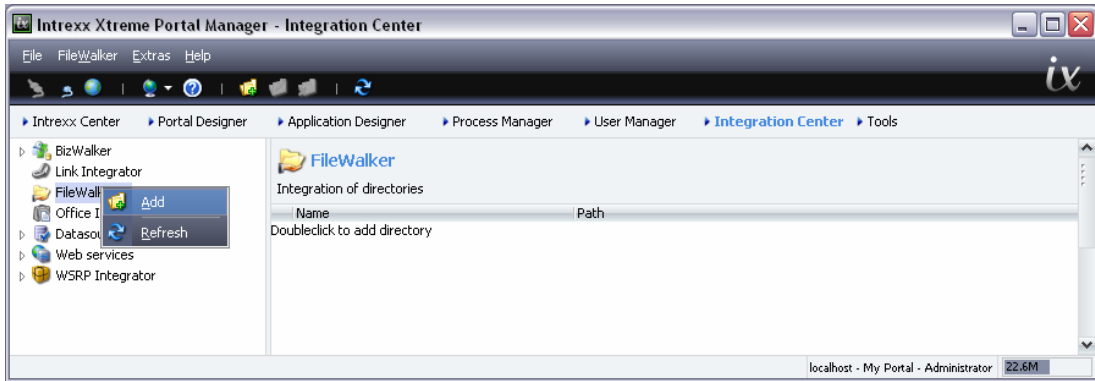
New holders of permissions can be added to the list in the upper area with *Add*. Additional information on the topic of permissions can be found in the *Permissions* handbook. Clicking *OK* opens the Menu Designer. The new link can be assigned to a menu item here.



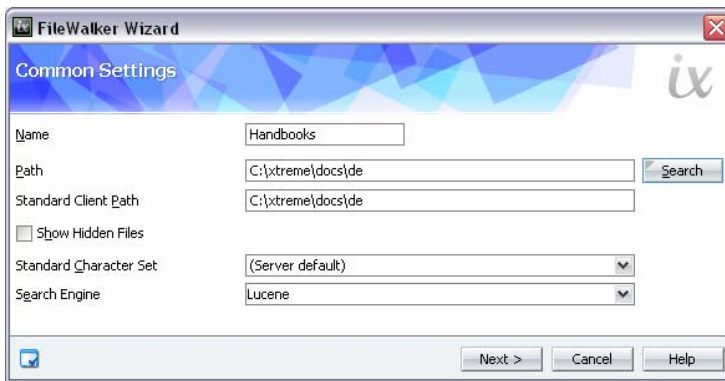
The integration will be completed by clicking *OK*.

#### 4. FileWalker

With the *FileWalker* view element, which you can reach from the Application Designer, and a configured connection to available network directories, you can make direct access to files saved on your network available to users in the browser. You will set up this connection with the *FileWalker*.



Selecting *Add* from the context menu or by double-clicking on the right-hand area will open a wizard, which will lead you through the configuration of the connection.



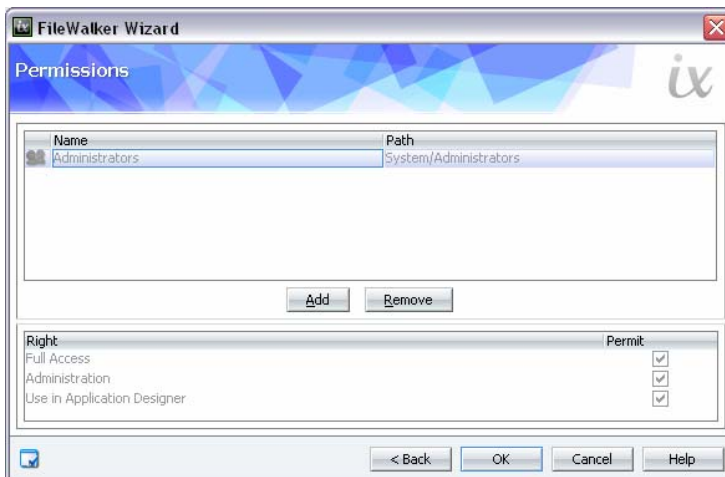
Enter a *Name* for the connection. With *Search*, a connected directory can be selected. The *Directory Path* will then be automatically entered.


In the *Standard Client Path* field, the directory for access to clients will be entered. As the mapping for client and server access (such as in heterogeneous network environments) may vary, the directory path and the standard client path can differ.

The setting to *Show hidden files* allows hidden files to be shown as well. The *Lucene* search engine is contained within the delivery package of Intrex Xtreme.


Click *Next* if the required entries have been made.

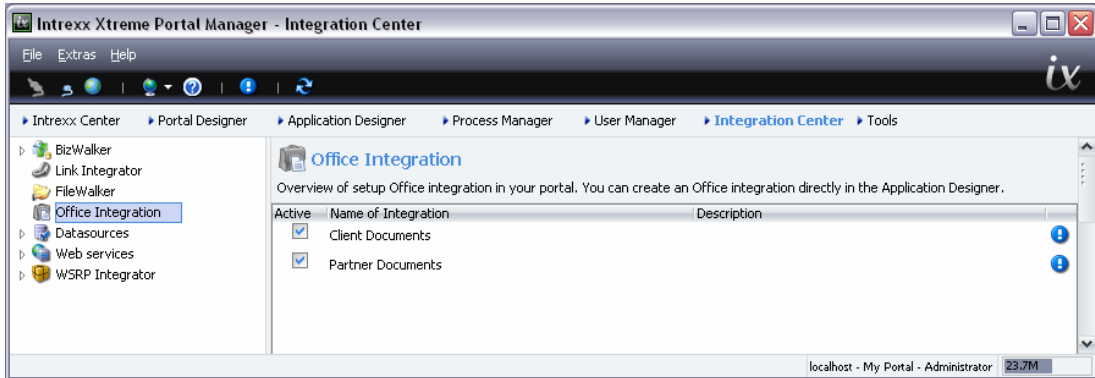
In the following dialog, the permissions for access to the connection can be controlled (see handbook *Permissions*).



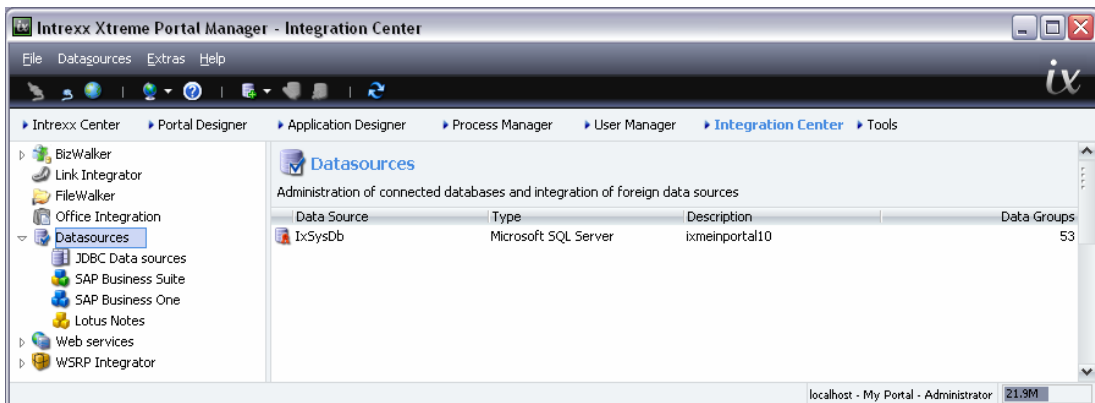
After clicking the  *OK* button, the connection will be created. You can now select the connection from a selection list in the properties dialog of the *FileWalker* view element in the Application Designer.

**5. Office Integration**

General information on this topic can be found in the  *Office Integration* handbook.



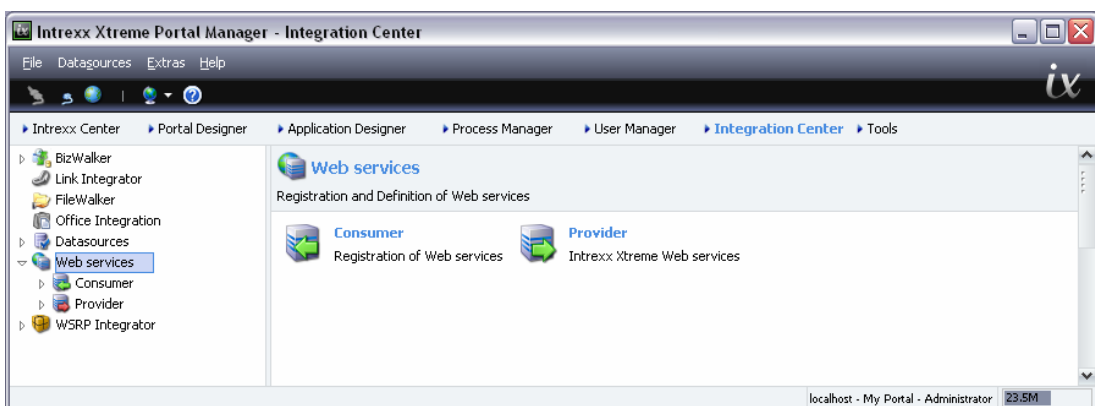
**6. Data Sources**



With *Data Sources*, connections to data sources can be created for foreign data access. A complete description can be found in the  *Foreign Data Access* handbook.

**7. Web Services**

With *Web Services*, existing web services can be used and individual web services, which make portal data available for use, can be created.




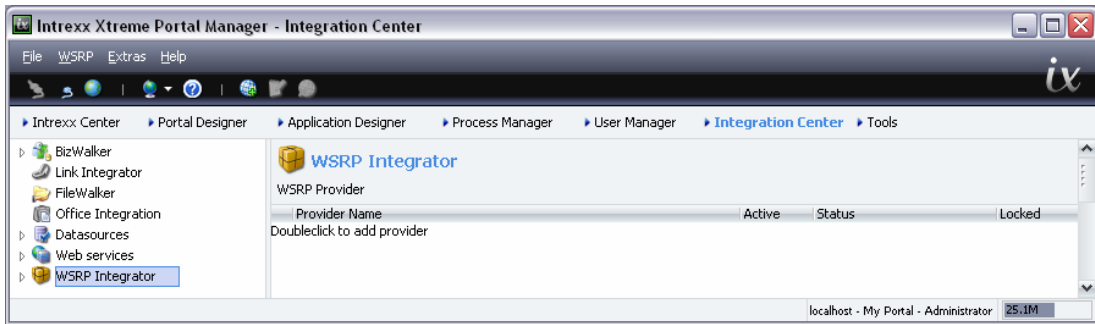
You can find all information on this topic in the  *Web Services* handbook.

**8. WSRP Integrator**

The web service standard *WSRP* was created by OASIS (Organization for the Advancement of Structured Information Standards) for the integration of applications in portals.

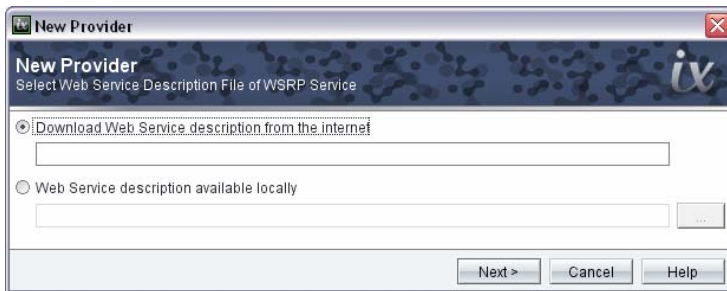
With the *WSRP-Integrator*, you can integrate portlets from third party vendors that support this standard into your Intrexx Xtreme portal.

Please activate the setting *Use Proxy* in the portal properties if you wish to use WSR Portlets in your portal. Information on these settings can be found in the  *Center* handbook.



The *Add* context menu item allows you to register a new provider.

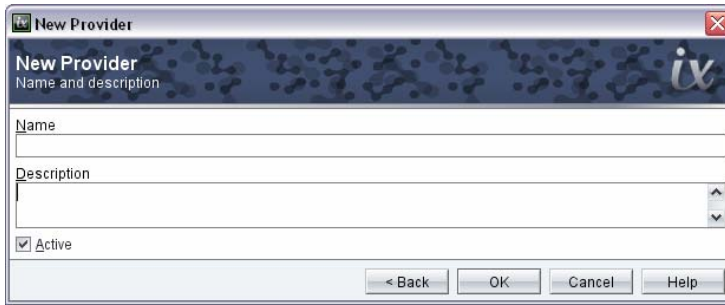
**8.1. Registering a New Provider**



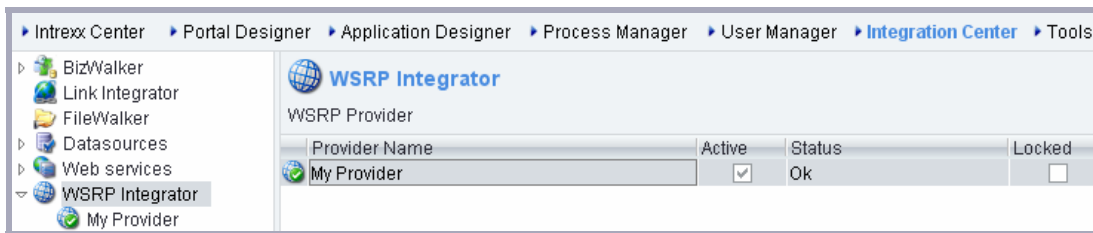
Enter a valid URL in the *Download Web Service description from internet* field. With the *Web Service description available locally* option, you can load the WSDL file from the network or a local directory.



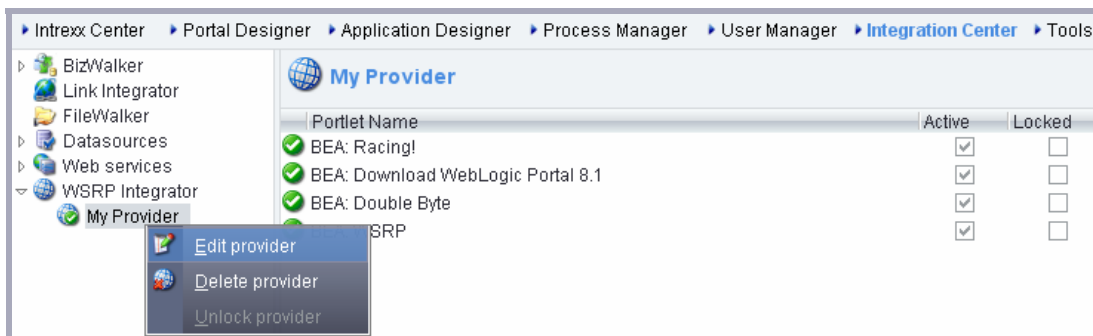
Enter here which user profile data can or should be detected.



Enter a *Name* and a *Description* of the provider. If you integrate the portlets at a later time into the main portal, this name will be shown when selecting the portlet. With the *Activated* setting, the portlets of the provider can be selected from the portlet pool. Click **OK** to apply the new settings.



The new provider will be shown. Click on the arrow next to the *WSRP Integrator*. After clicking on the provider, the portlets contained within will be shown in the right-hand area.



The context menu item *Edit provider* allows all settings to be edited, and *Delete provider* will delete a provider from the list. *Unlock provider* will unlock a provider for editing. If you highlight a portlet in the left-hand area, the settings can be changed via the context menu item *Edit Portlet*.

How to make the portlets available on a portal page can be found in the *Portal and Portlets* handbook.