




ix MULTILINGUAL PORTALS



UNITED PLANET INTREXX XTREME
RELEASE 4.5







Table of Contents

- 1. Country Settings and the Language Switch 4**
- 1.1. Languages 4
- 1.2. Date & Time 4
 - 1.2.1. Time Zone..... 4
 - 1.2.2. Date Format 5
 - 1.2.3. Time Format..... 5
- 1.3. Number Format 6
 - 1.3.1. Integer Fields 6
 - 1.3.2. Number Fields 6
 - 1.3.3. Currency Fields 7
- 2. Preset Texts 7**
- 2.1. Page Texts 7
- 2.2. Metatags..... 8
 - 2.2.1. Meanings of Metatags 8
- 3. Application Elements and Menu Items 8**
- 3.1. Multilingual Titles 8
- 3.2. Multilingual Data Records 9
- 3.3. Language Adjustment in Applications 9
- 3.4. Elements in the Application Designer..... 9
- 3.5. Exporting and Importing Application Texts 10
- 3.6. Options..... 10
- 3.7. Language-dependent References 10


Writing Conventions

In this handbook, text passages will be displayed in *italics* when they refer to settings in the displayed dialogs. Menu items that are available in context menus can, in addition, always be selected from the main menu. Main menu items will not be described if they are not available in the context menu. A description of the general main menu items can be found in the  *Center* handbook. Programming code in the text will be displayed in the Courier font. Context menus can be opened by clicking with the right mouse button on the described element.

In the following, *<xtreme>* refers to your Intrex installation path; under Windows, for example, this is usually  *C:\xtreme*. On Linux, the normal install path is  */opt/xtreme/*. The following symbols will be used for designation of special kinds of information:

-  Important information
-  Tips and background information
-  References to additional information in an Intrex Xtreme handbook
-  Directories
-  URLs
-  Buttons in dialogs or assistants

Previous Knowledge

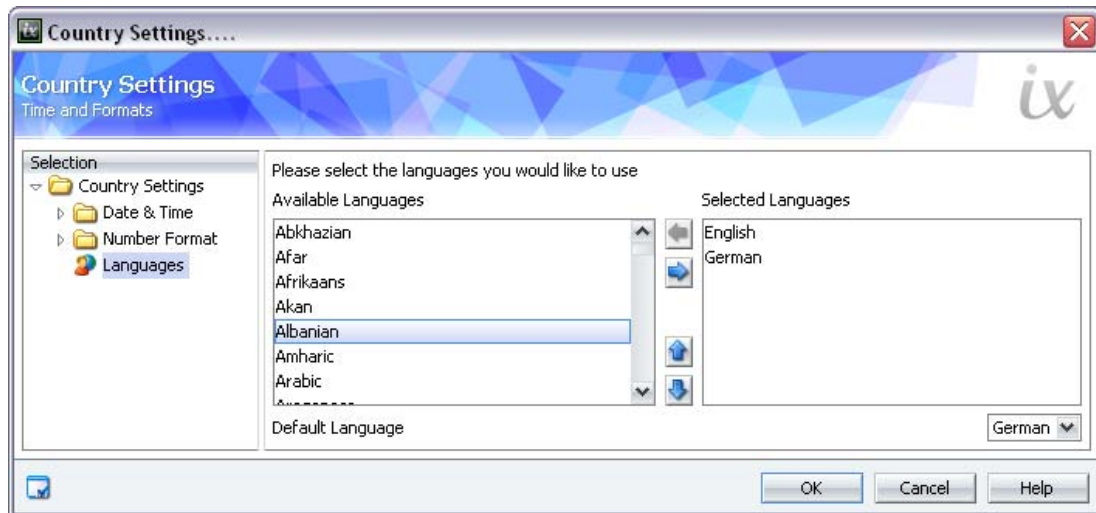
For this handbook, you require no special training. You can find helpful information in the Intrex Xtreme handbook  *Center*.

1. Country Settings and the Language Switch

Intrex Xtreme portals can be created in multiple languages and switched to a different language in the browser. The language switcher is an additional control that can be inserted in the Portal Designer into a frame in the portal (see [Portal Designer handbook](#)). In the country settings, you will define the portal-wide defaults for language, date, time, and number formats.

1.1. Languages

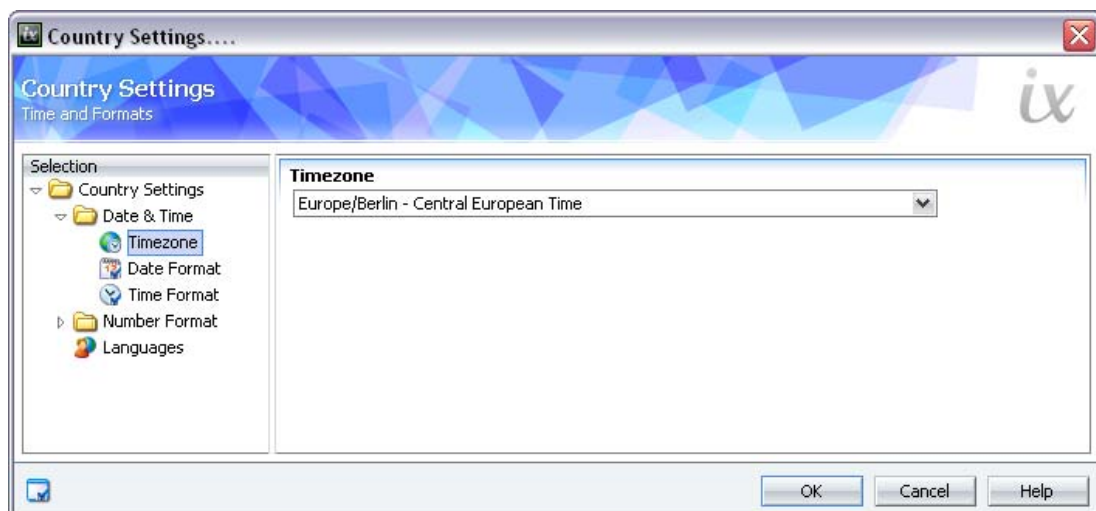
You will define the portal languages in the *Extras / Country Settings* menu.



In this example, the languages *English* and *German* have been activated. If you move additional languages from the list of *Available Languages* to the *Selected Languages* list, they will additionally be available in the portal. You will define the default language via the selection list in the lower area of the dialog.

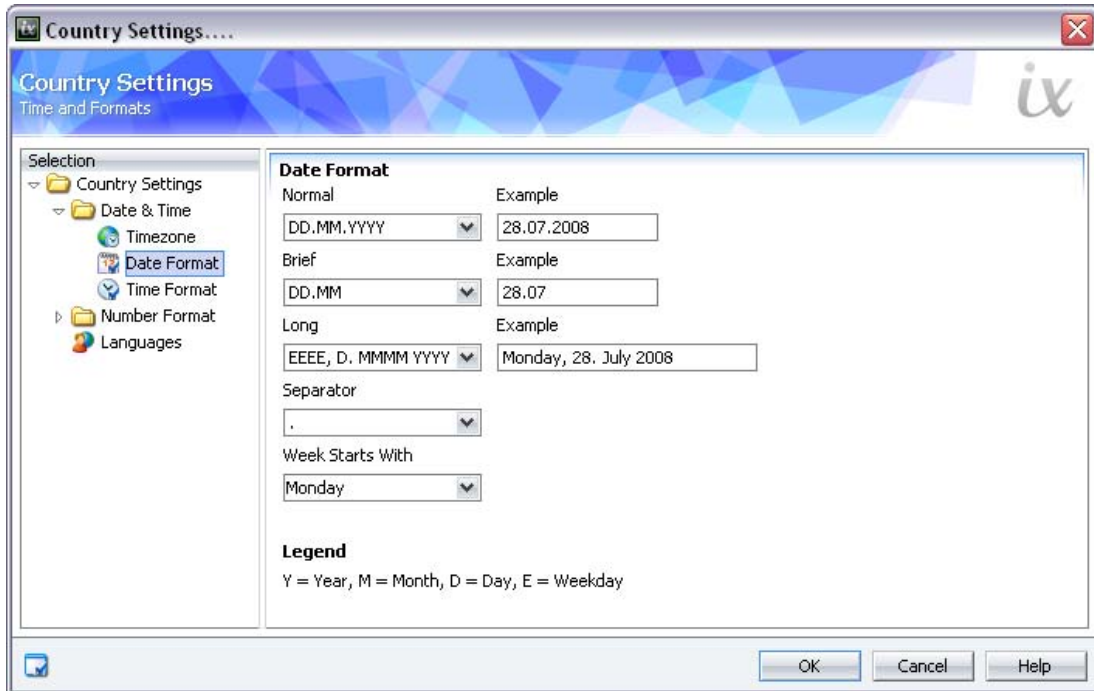
1.2. Date & Time

1.2.1. Time Zone



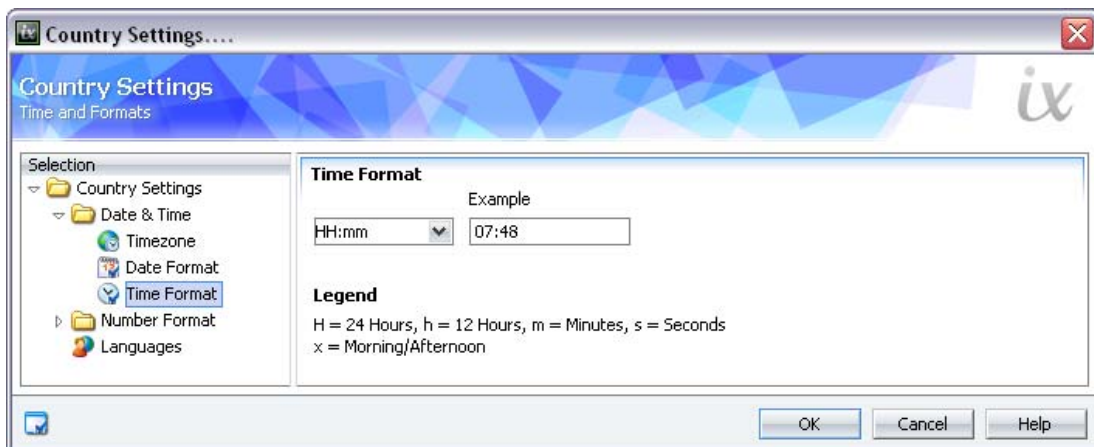
Here you will define the time zone that will be shown for date values in the portal. This time zone will be used as long as no individual time zone has been entered for a user (see handbook [User Manager](#)). In Intrex Xtreme, all date values will be saved in the database in GMT (Greenwich Mean Time). For display in the browser, the difference between the current time zone and GMT will be added to or subtracted from the time saved in the database.

1.2.2. Date Format



The format in which a date is displayed in the portal can be defined here. In the example fields, a preview of the selected format will be shown. The legend in the lower area will inform you about the meanings of the abbreviations used.

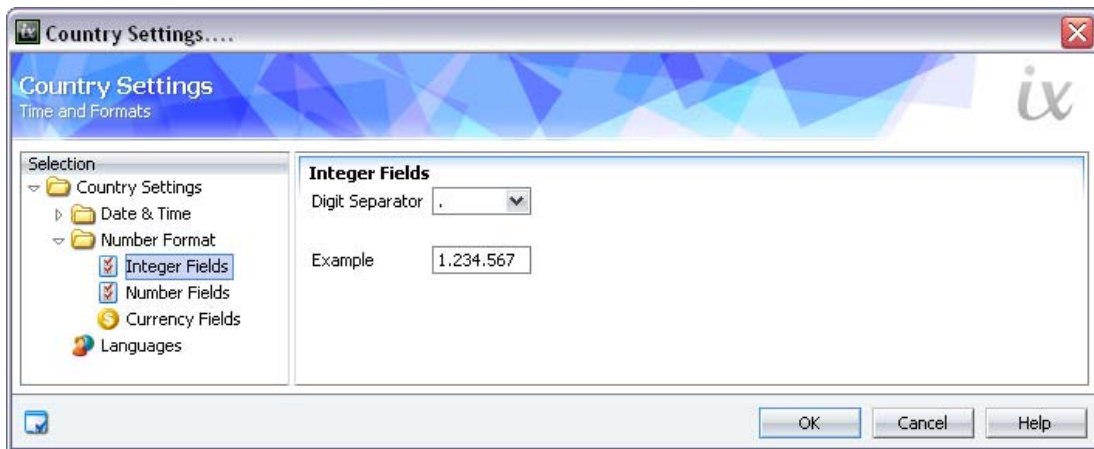
1.2.3. Time Format



Here you will enter the display format of time in the portal, as with the date format.

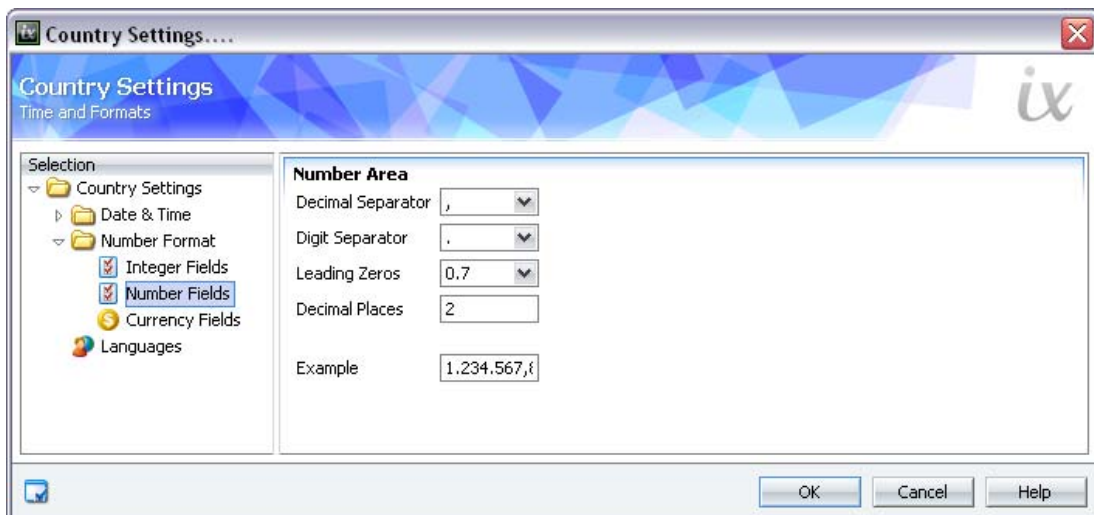
1.3. Number Format

1.3.1. Integer Fields



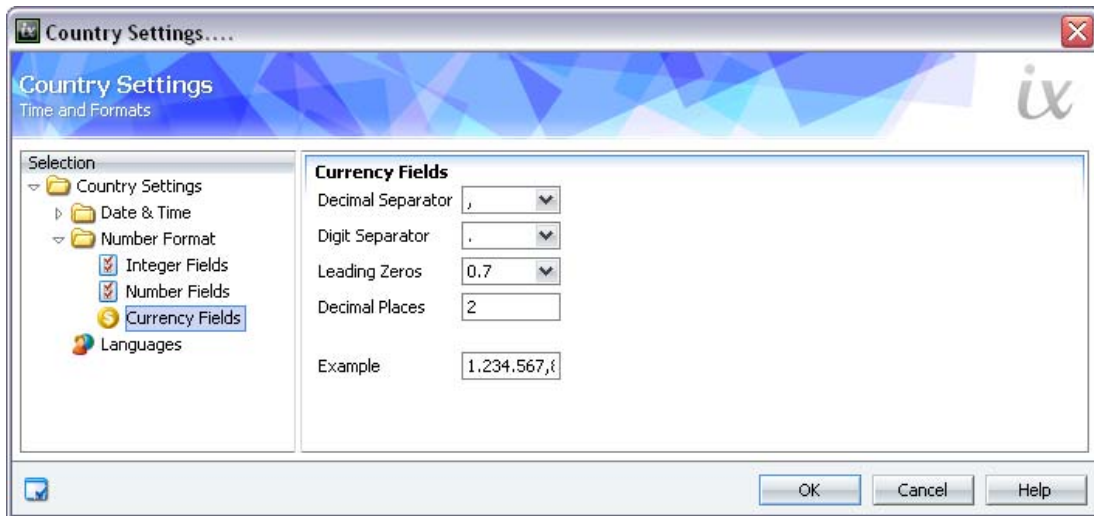
The *1000s separator* for integers will be set here.

1.3.2. Number Fields



Define here how the *Decimal separator*, which will be used for non-whole numbers, the *1000s separator*, the *Leading nulls*, and the *Number of decimal places* will be displayed.

1.3.3. Currency Fields

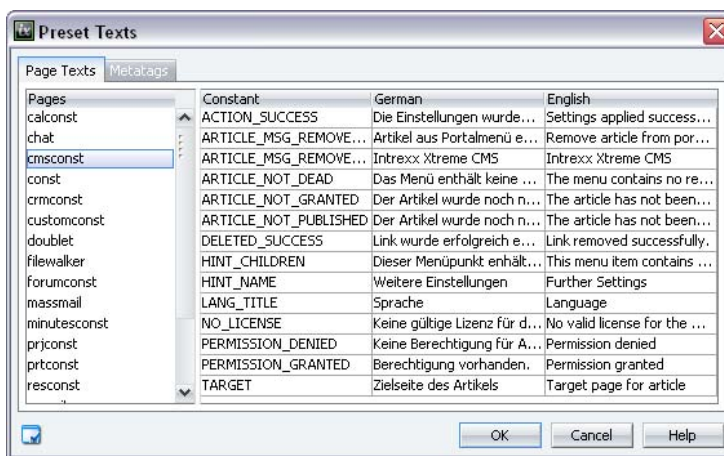


For currency fields, the same settings as with number fields can be set.

2. Preset Texts

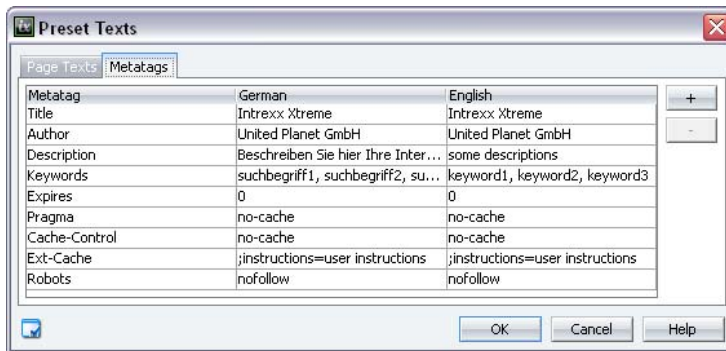
The standard texts used in the portal, such as those used for system messages or metatags, can be edited and entered in multiple languages from the menu *Extras / Preset Texts*.

2.1. Page Texts



On the *Page Texts* tab you can view all system texts, which will be used in Intrex Xtreme for error messages, in lists, or in other outputs. In the *Pages* column, the texts will be combined into groups. Clicking on an entry will show the constants of the group in the table to the right. The system texts can be edited in the portal languages you have set. Changes will be saved by clicking **OK**.

2.2. Metatags



With metatags, information for webservers, browsers, and automatic search programs on the internet can be provided. Metatags are HTML tags that describe the contents of an HTML page. Search engines will, with the help of metatags, create entries in their databases or calculate weightings in a list of hits. On the *Metatags* tab, meta-information can be entered in multiple languages.

Metatags can be added or removed with the two buttons to the right of the table. By clicking **OK**, the metatags will be applied to all portal pages.

2.2.1. Meanings of Metatags Description

The description may not exceed 200 characters. In the *Description* tag you will enter information about the company, product, persons, or page contents.

Keywords

Keywords consist of individual words or expressions and will be separated with commas. With these keywords, the contents of the page will be summarized and expressed in variations. Select some appropriate formulations that a user would search for on the internet in order to find a page of your portal.

Robots (Instructions for Search Engines)

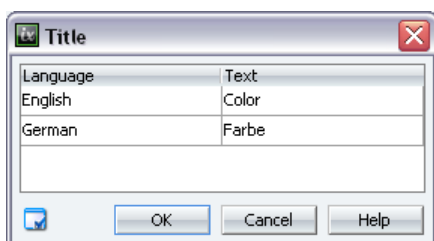
Here you will define how the page will be handled by robots, which index pages for search engines.

- *noindex* Forbids the page from being indexed
- *index* Request for the page to be indexed
- *follow* Index page and follow links to additional pages
- *nofollow* Do not index page, do not follow links

There are a large number of additional metatags that can be entered. For more information on the topic, please search for literature on the topic of web design or the internet.

3. Application Elements and Menu Items


3.1. Multilingual Titles



In the Application Designer you will find the globe icon in the properties of elements, and in the Menu Designer under the properties of menu items.

Click the icon to open a dialog, in which the title of the element or menu item can be entered in the various portal languages you have set up. When the language is switched in the browser, the text will be used for which the currently selected language has been entered.

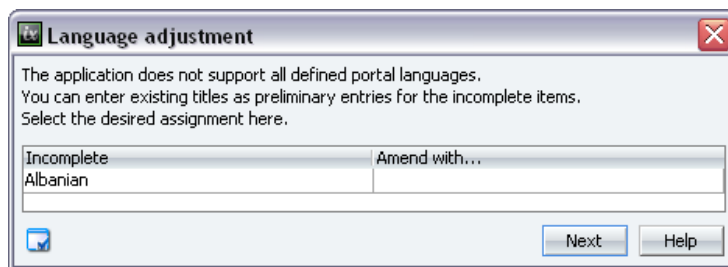
3.2. Multilingual Data Records

In order to show data records in the correct language upon switching languages, the two-digit ISO 639 language code must be entered when composing a data record (such as *de* for *German*, *en* for *English*). Please take note of capitalization when entering these language abbreviations. The language-dependent display will be controlled by a filter. In the filter, the value of the data field *Language* will be compared using the system value *Language*. Additional information on this can be found in the handbook  *Application Designer*.


3.3. Language Adjustment in Applications

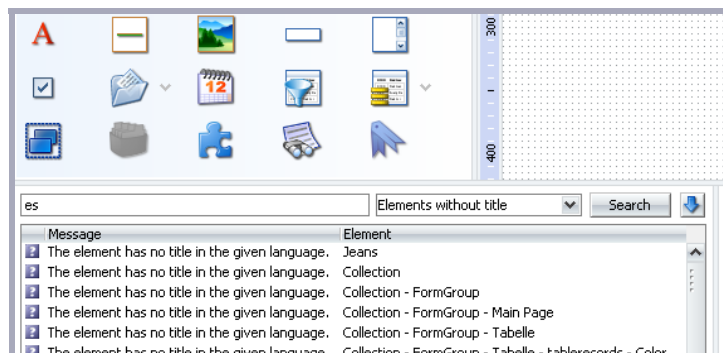
When opening an application, Intrex will check whether the application supports all defined portal languages completely. This is the case if, for all elements, data fields, etc. titles are entered in all portal languages. If you have, for example, entered an additional portal language in the country settings, titles will not automatically be entered in the existing applications.

If desired, missing titles can be filled in with titles from one of the other portal languages. To do so, select a portal language by clicking in the column *Complete with...*




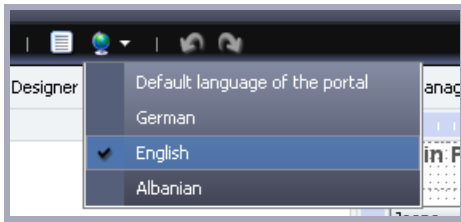
If no title exists in the selected language, the incomplete title will be replaced with an empty string.

In the Application Designer, you can search in the hints, which can be shown in the lower area via the menu *Extras / Hints*, for *Elements without titles* in one of the defined portal languages. Additional information on this topic can be found in the  *Application Designer* handbook.



3.4. Elements in the Application Designer

The language in which the titles of elements will be shown in the Application Designer can be switched via the  globe icon in the toolbar. The *Default portal language* setting will show all titles in the default language.



3.5. Exporting and Importing Application Texts

If you are currently using the Application Designer, the title and name of all elements in an application can be exported in the form of an XML file. This function can be used in the translation of the portal into other languages. Clicking the menu item *Application / Export Texts* will create an XML file, which can be saved to a directory of your choice.

Open the XML file with a standard text editor in order to edit them. All elements of the application will be given with their *GUID*, as with the example below.

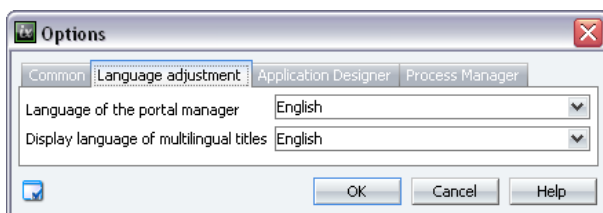
```
<labelcontrol guid="34381F99EBB8C2A53362EE3372D02A76FB04E6DE">
  <de>Reservierungsgrund</de>
  <en>Booking Occasion</en>
</labelcontrol>
```

The corresponding language can be recognized from the language abbreviations in the brackets. In our example, *<en>Booking Occasion</en>* stands for the title of the element in English, while *<de>Reservierungsgrund</de>* corresponds to the German title, which will be shown when changing the portal over to the German language. If you wish to edit a German translation, simply change the title contained between the language abbreviations (such as *<de>Old German title</de>* to *<de>New German title</de>*).

The individual elements can be found again in the text editor via their *GUIDs*. You can find the *GUID* of an element in the Application Designer by highlighting the element in question. With the *F4* key, the *GUID* of the element will be shown, as long as the options for experts have been activated from the *Extras / Options* menu. The *GUID* can be also found in the properties dialog on the *Expert* tab. Copy the *GUID* of the element to the clipboard and then use it to find the item in the text editor.

If you have edited the texts of an application, you can refresh the old titles in the application by using the XML file with the *Import Texts* menu item. Select the XML file that you have previously exported and edited here. After importing the file and saving the application, the texts will be refreshed.

3.6. Options



Under *Extras / Options*, the language of the Portal Manager can be defined. The new setting will go into effect the next time the Portal Manager is started. Additionally, the language can be selected in which the titles of elements will be shown.

3.7. Language-dependent References

When referencing data groups with more than one primary key and using the variables of session variables in the foreign key, a reference can be set as language-dependent. An interesting aspect of this possibility is in connection to access to third-party data (see handbook [Foreign Data Access](#)).

English Language Setting

German Language Setting

Collection Jeans Color	
Jeans	Color
501	red
501	black
503	red
503	black

Kollektion Jeans Farbe	
Jeans	Farbe
501	rot
501	schwarz
503	rot
503	schwarz

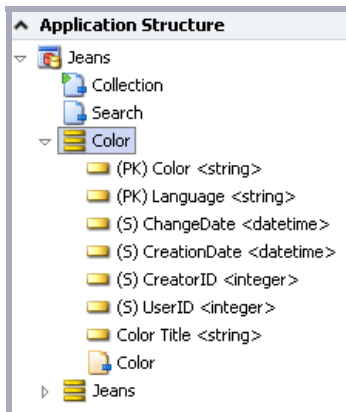
In this example, a jeans collection will be administered. If a user switches the portal to English, the colors of the corresponding models will be shown in the correct language.

On the *Color* edit page, a constant will be entered to the field *Color*, which in all languages uses the same character string for a color.

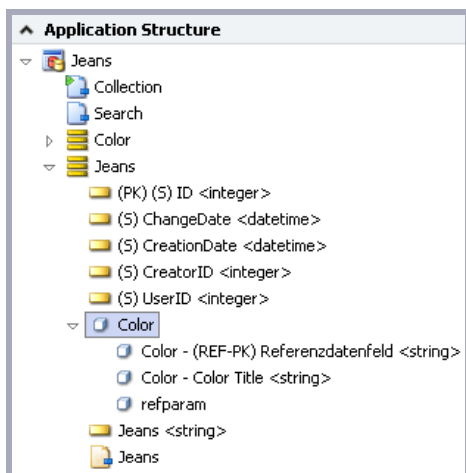
Color	RED
Language	en
Color Title	red

In the *Language* selection list, the corresponding language abbreviation will be selected here. In *Color Title*, the color that will also be shown in the table on the *Collection* page will be entered in its corresponding languages.

The structure of the application consists of the data groups *Color* and *Jeans*, whereby the *Color* data group contains two primary keys (*Color* and *Language*).



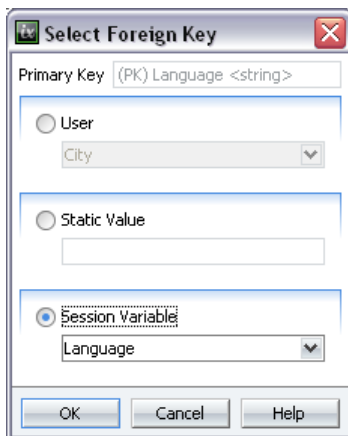
The *Color* data group will be referenced by the *Jeans* data group.



When entering this reference, you have the ability to assign foreign keys in the *Relationships* dialog.



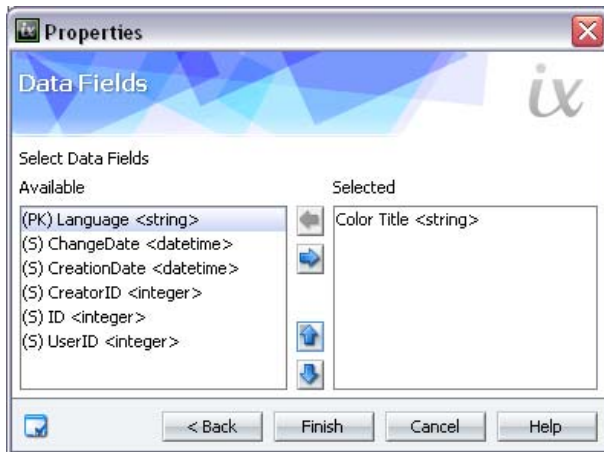
Highlight the *Language* primary key and click on  *Mark assignment*.




The session variable *Language* will be selected as foreign key, out of which in Intrexx Xtreme, at any time, the language key of the current language setting of the portal can be read.

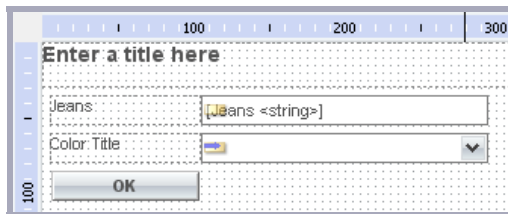


Click  *Next* here.

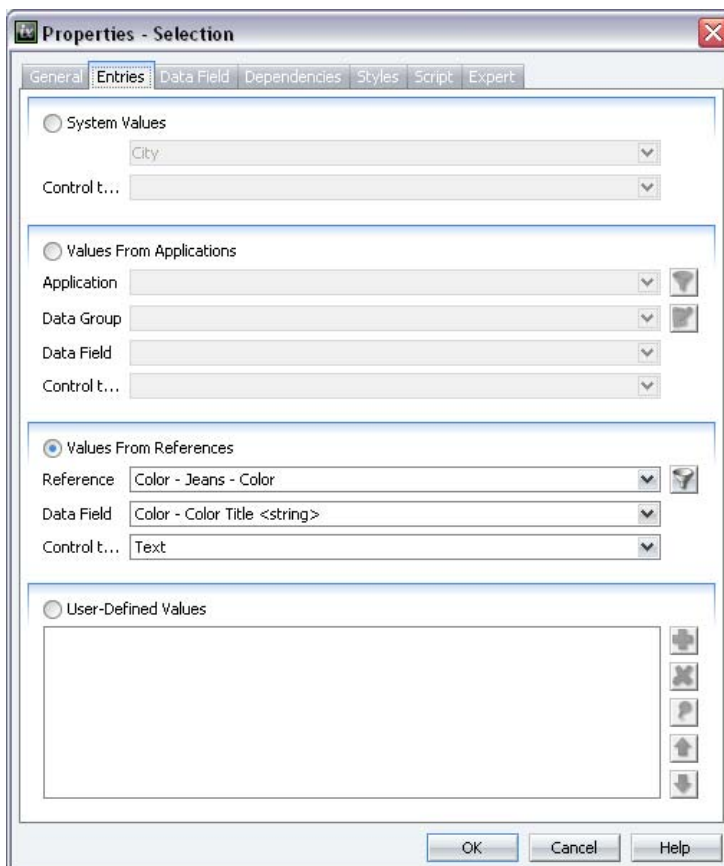


The *Color title* will be selected as data field here. To apply these settings, click  *Finish*.

On the *Jeans* edit page, the selection list allowing for the color to be chosen can now be entered.



The entries in the selection list stem from the *Color title* reference field.



Here is the *Jeans* edit page in the browser. The correct entries will be displayed in the selection list, whether the portal is set to English or German language.

German Language Setting

Kollektion	Jeans	Farbe
Jeans	<input type="text" value="501"/>	<input type="text" value="rot"/>
Farbe		<input type="text" value="rot"/>
<input type="button" value="OK"/>		<ul style="list-style-type: none">rotrotschwarz

English Language Setting

Collection	Jeans	Color
Jeans	<input type="text" value="501"/>	<input type="text" value="red"/>
Color		<input type="text" value="red"/>
<input type="button" value="OK"/>		<ul style="list-style-type: none">redblackred