




ix SETUP



UNITED PLANET INTREXX XTREME
RELEASE 4.5







Contents

1. System Requirements	4
1.1. Portal Server	4
1.2. Portal Manager	4
1.3. Portal User	4
1.4. Office Integration	4
2. Setup	5
2.1. Complete Installation of Server and Manager	5
2.1.1. Installation notes for Linux platforms	5
2.2. Configuration of Microsoft Windows 2003 Server.....	10
2.2.1. IIS / Web Service Extensions	10
2.2.2. IIS / Virtual Directory Properties / Configuration	11
2.2.3. Entries in File C:\WINDOWS\system32\inetsrv\metabase.xml.....	11
2.3. Service Console	12
2.4. Installation of Intrex Xtreme Portal Manager.....	13
3. PostgreSQL	13
3.1. Installation under Linux	13
3.2. Configuration under Linux	14
4. Licensing	14
4.1. Licenses Tab.....	15
4.2. Allocation Tab.....	15
5. Uninstall	16

Writing Conventions

In this handbook, text passages will be displayed in *italics* when they refer to settings in the displayed dialogs. Menu items that are available in context menus can, in addition, always be selected from the main menu. Main menu items will not be described if they are not available in the context menu. A description of the general main menu items can be found in the  *Center* handbook. Programming code in the text will be displayed in the Courier font. Context menus can be opened by clicking with the right mouse button on the described element.

In the following, *<xtreme>* refers to your Intrex installation path; under Windows, for example, this is usually  *C:\xtreme*. On Linux, the normal install path is  */opt/xtreme/*. The following symbols will be used for designation of special kinds of information:

-  Important information
-  Tips and background information
-  References to additional information in an Intrex Xtreme handbook
-  Directories
-  URLs
-  Buttons in dialogs or assistants

Previous Knowledge

For this handbook, you require no special training. You can find helpful information in the Intrex Xtreme handbooks  *Center* and  *Start*.

1. System Requirements

In order to use Intrexx Xtreme, the following minimum requirements must be fulfilled:

1.1. Portal Server

Hardware

Pentium III compatible CPU of at least 1.8 GHz
or CPU with AMD64/EM64T extensions, SUN Sparc.
Additional platform compatibility data available on request.
Minimum 1 GB RAM,
minimum of 400 MB free disk space.

Operating System

Microsoft Windows 2000/2003/2008 or
Linux for x86 and/or AMD64/EM64T processors, SUN Solaris.
FreeBSD from Version 6.3, Mac OS X from Version 10.5.
Additional operating systems compatibility data available on request.

Web Server

Tomcat,
Microsoft Internet Information Server (IIS)

Database

Oracle from version 9,
Oracle 10g Express Edition,
PostgreSQL from version 7.3.2,
Microsoft SQL Server from version 2000,
IBM DB2, HSQL from version 1.7.2.

1.2. Portal Manager

Hardware

Pentium-class CPU of at least 1GHz
or CPU with AMD64/EM64T extensions, SUN Sparc.
Additional platform compatibility data available on request.
A minimum of 500 MB RAM,
a minimum of 200 MB free disk space.

Operating System

Windows 2000/2003/Vista,
XP or Linux for x86 and/or AMD64/EM64T processors, SUN Solaris.
FreeBSD from Version 6.3, Mac OS X from Version 10.5.
Additional operating systems compatibility data available on request.

1.3. Portal User

Hardware

Platform-independent

Default Web Browser

Internet Explorer from version 5.5,
Firefox from version 1.0.6,
Netscape from version 7.1,
Opera from version 8,
Safari.
No browser plugins required (Java, Flash, etc.)

1.4. Office Integration

Intrexx Xtreme from version 4.5,
Microsoft Office from version 2003,
Microsoft .NET Framework 3.5,
Microsoft Windows XP, Vista, Server 2003, Server 2008.

2. Setup

2.1. Complete Installation of Server and Manager

Please install Intrex Xtreme Portal Server first, whether you want to install the full version of Intrex Xtreme or update an installed version. If running a complete installation, the Intrex Xtreme Portal Manager and Intrex Xtreme Portal Server will be installed at the same time. The complete installation makes it possible to administrate the portal server with the Portal Manager. Additionally, the software update can be directly executed on the portal server. If you don't want to install the Portal Manager on your server, you can leave this component out of the installation process.

Insert the Intrex Xtreme install CD into the CD-ROM drive of the computer that will be used as the portal server. The setup program should start automatically under Windows after you have inserted the Intrex CD into the drive. If this is not the case, please run *Setup.exe* from the CD.

2.1.1. Installation notes for Linux platforms

In the following section, it will be assumed that the mount point for the CD-ROM drive is */media/cdrom*. This can vary depending on the system. Switch to the console or open a terminal window and switch to the user *root*:

```
# su -
```

Mount the CD if your operating system does not do so automatically.

```
# mount /media/cdrom
```

Go to the CD-ROM directory:

```
# cd /media/cdrom
```

On systems with a running X Server, you can now start the graphical Setup:

```
# ./setup.sh
```

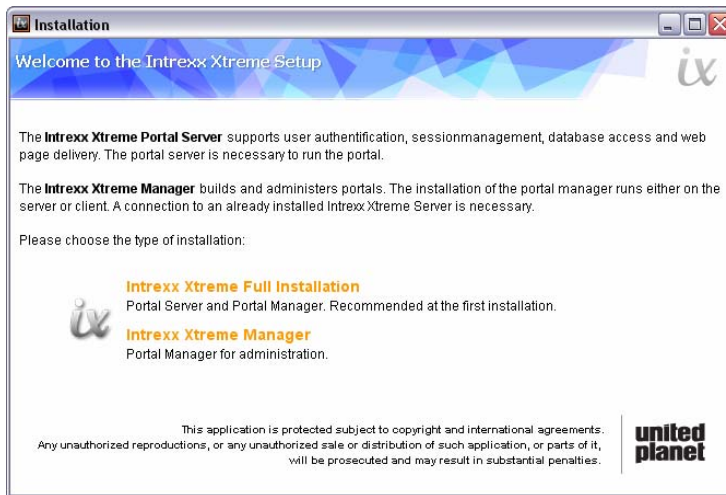
If you do not run an X Server, you will be required to run the console setup:

```
# ./serversetup.sh
```

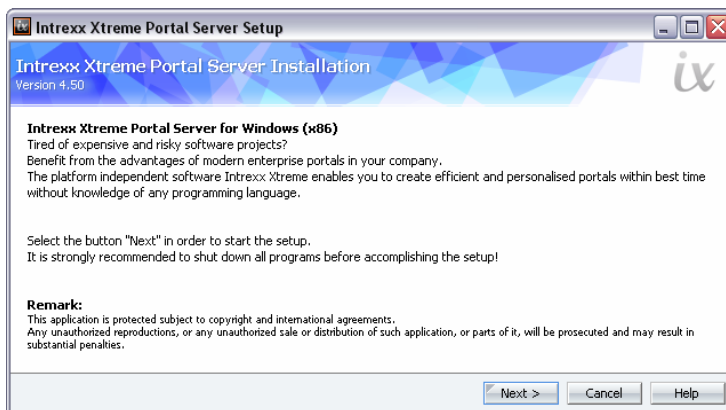
The console setup always uses the */opt/xtreme* directory for the full installation as default. If you wish to change the installation directory, please use:


```
# ./serversetup.sh setup.dest.path=<Installation directory>
```

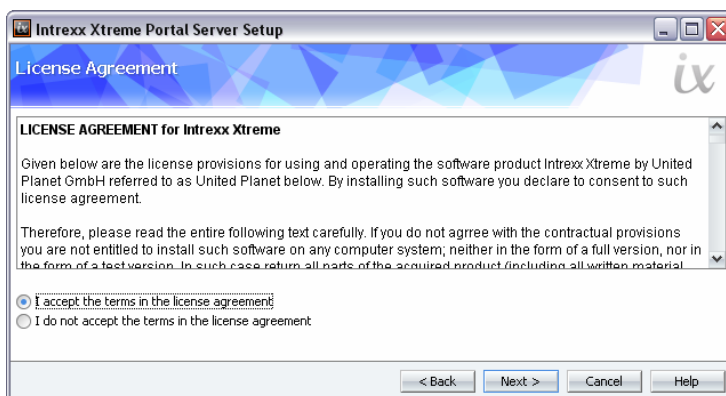
The rest of the installation is identical on both Linux and Windows platforms. You will be greeted by the welcome screen of Intrex Xtreme setup assistant, which will lead you through the installation process.



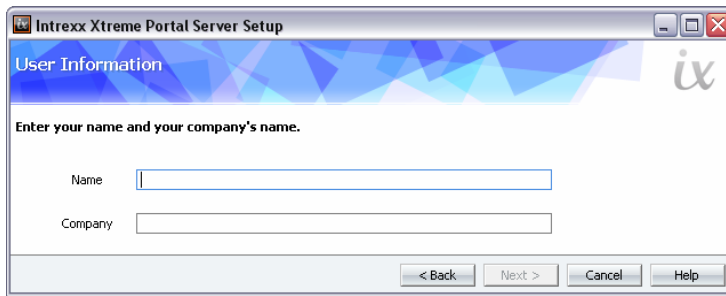
You can choose either complete installation of Portal Server and Portal Manager or installation of Portal Manager on a client only. Please click the corresponding link.



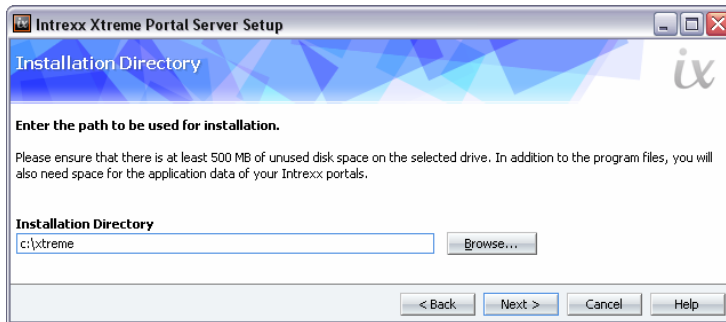
Close all running applications and click  *Next*.



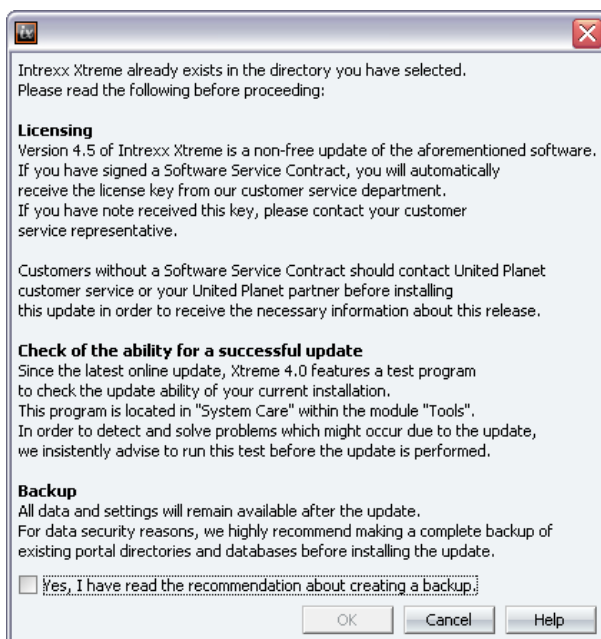
Read and accept the license agreement and then click  *Next*.



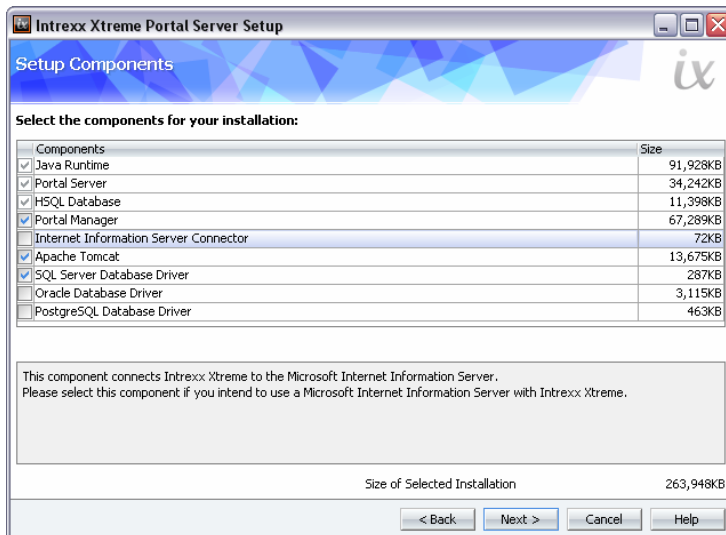
Enter your name and your company's name, and then click *Next*.



Please select the directory in which Intrex Xtreme Portal Server will be installed. By default, it will be installed to `c:\xtreme\`. To install Intrex Xtreme to another directory, simply change this path. If you want to update Intrex Xtreme Portal Server, please enter the directory where the earlier version is located. Click *Next* to continue. If you have already installed Intrex Xtreme to the specified directory, the following message will appear:



Confirm the query by clicking on *Yes* if you have read the recommendation to create a backup, want to update the existing version and have made a backup of the portal directories and databases. Your data and settings will be kept upon update.



Select the components that you wish to install with Intrex Xtreme Setup here. To do so, simply mark the checkbox in front of each corresponding component. Some components are required for full functionality of the Intrex Xtreme Portal Server, and cannot be removed from the installation. You will recognize these components by the light gray checks in the checkboxes next to them. The mandatory components include:

Java Runtime

Java Runtime is the runtime environment for the Intrex Xtreme Portal Server and Portal Manager.

Portal Server

The Intrex Xtreme Portal Server is the central component.

HSQL Database

HSQL is a license- and cost-free, open source database. Using HSQL will allow you to start databases quickly and easily. We recommend using a HSQL database for demonstration and testing purposes only.

All other components are optional. Intrex Xtreme requires a web server and a database to operate. These can be selected and installed from the following list of components.

- **Portal Manager**

The Intrex Xtreme Portal Server will be administrated by the Portal Manager. If you select the Intrex Xtreme Portal Manager here, it will be installed on the Portal Server.

The Portal Manager can be installed afterwards at any time and on any workstation with access to the Portal Server.

You can select from the following web servers:

- **Internet Information Server Connection**

This component will prepare a connection to the Microsoft Internet Information Server. Selecting this option will affect the configuration of the portal later. Please note that Microsoft Internet Information Server must be installed and activated on the server.

- **Apache Tomcat**

This component will install Apache Tomcat.

An installed database is necessary in order to use Intrex Xtreme. Optionally you can install the drivers for the following databases:

- **SQL Server Database driver**

Access to Microsoft SQL Server databases

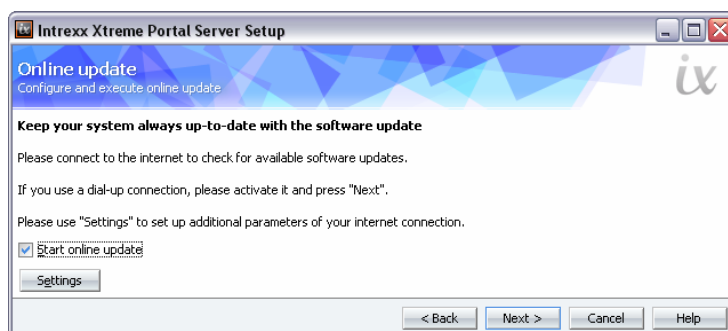
- **Oracle Database driver**

Access to Oracle databases

- **PostgreSQL Database driver**

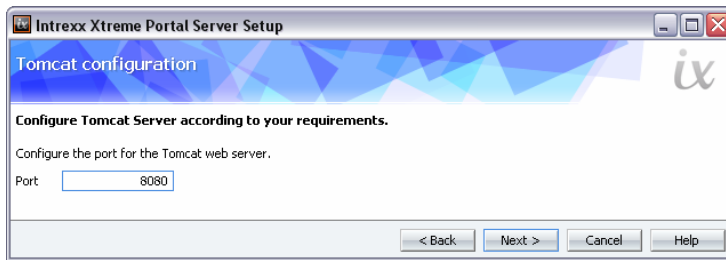
Access to PostgreSQL databases

When selecting the setup components, the current storage space requirement for the selected installation will be shown in the lower right. After selecting the setup components, please click [Next](#).

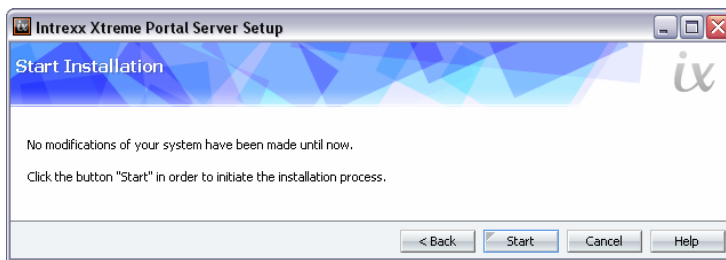


Here you can decide whether you wish to run a software update as a part of setup. All information on this topic can be found in the [Start](#) handbook. Click [Next](#) to continue.

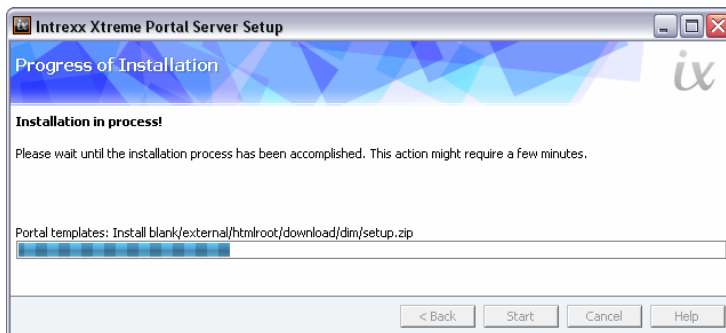
If you have decided to install Apache Tomcat, the port settings will be requested in an additional window.



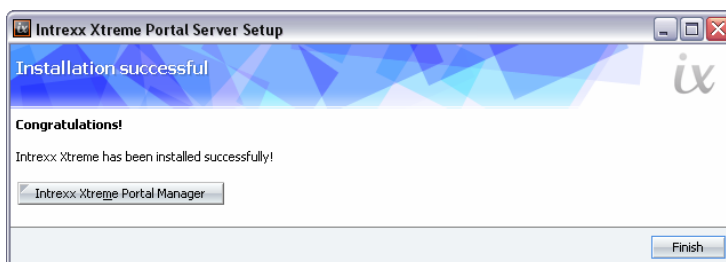
The default port number for the Tomcat server is 8080. Normally, you do not have to change this value. If a proxy server is installed on the Intrex Xtreme Portal Server, you should use another port (such as port 8081). Most proxy servers use port 8080 by default. Click *Next*. In the following window, please click *Start*.



Intrex Xtreme will be installed with the optional components you selected.



Please confirm the following dialog with *Finish*.



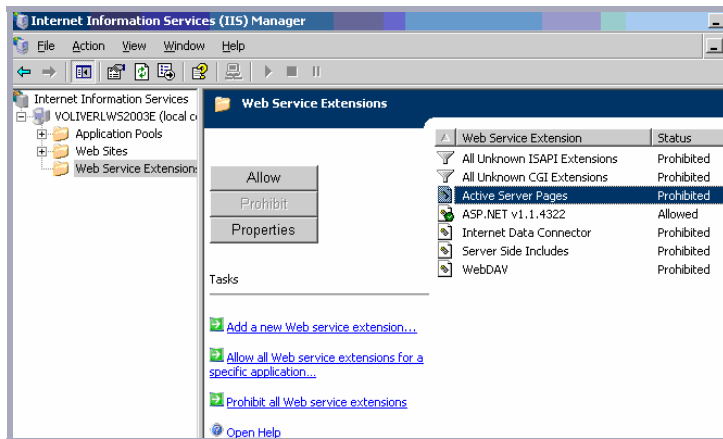
After completing the installation, you will find the *Service Console* in the program group *Intrex Xtreme Portal Server*. If you have also selected Intrex Xtreme Portal Manager to be installed, it will show up in this group as well.

2.2. Configuration of Microsoft Windows 2003 Server

In order to use Intrex on Microsoft Windows 2003 Server systems, please first install Service Pack 1. In addition, change the following settings.

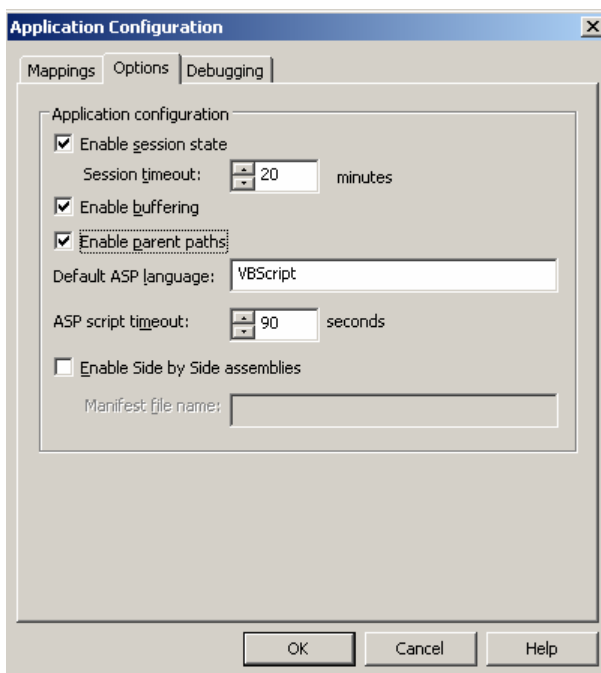
2.2.1. IIS / Web Service Extensions

Here you will set the Web Service extension *Active Server Pages* to *Allow*.




2.2.2. IIS / Virtual Directory Properties / Configuration

Please set the properties here as follows:



You can reach these settings by clicking on *Websites* with the right mouse button and then selecting *Properties*. Select the *Main Directory* tab here and then the *Configuration* item. Next, click the *Options* tab.

2.2.3. Entries in File C:\WINDOWS\system32\inetrv\metabase.xml

 Please only change *metabase.xml* in the ways recommended by Microsoft. A description of these methods can be found at <http://support.microsoft.com/kb/327659/en-us>. United Planet takes no responsibility for errors resulting from incorrect entries to *metabase.xml*.

Change the value of the entry *AspMaxRequestEntityAllowed* for uploads (default value: 204800 bytes) to a larger number, such as 6000000. This corresponds to an upload size restriction of about 6 MB. Additionally, change the value of the entry *AspBufferingLimit* for downloads (default value: 4194304) to 14194304. The original value corresponds to a limit of 4.19 MB. Our suggested value increases the value to 14.19 MB. If you wish to download larger documents, please increase this value accordingly. Please note that a value that is set too low for upload operations in Intrex Xtreme can result in the error, among others, that uploads will not be run to completion. This can create empty data sets

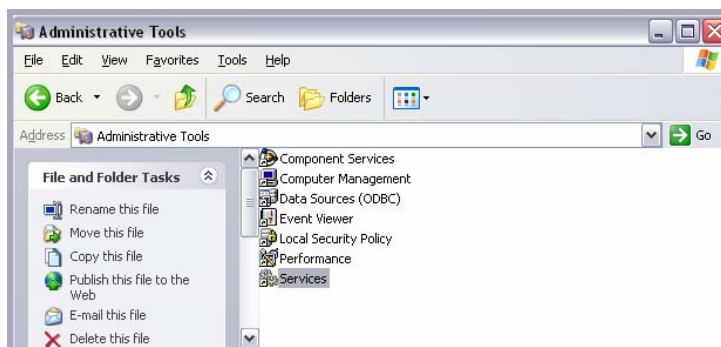
without file contents, for example. After changing *Metabase.xml*, the WWW-Publishing Service must be restarted in order for the changes to take effect.

2.3. Service Console

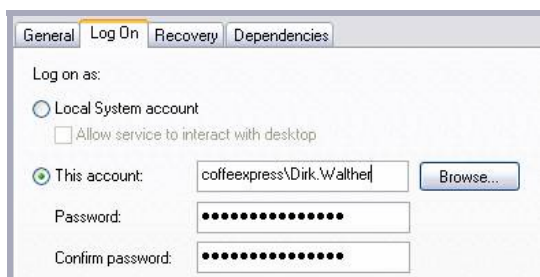


The service console shows running services. The services will be automatically started upon starting the server system. Depending on computer speed and the number of installed portals, this process may take several minutes.

Each server process (such as the portal process) possesses its own service, which will be managed by the corresponding operations in place on the operating system. Under Windows, for example, this is the Service Manager. With this, individual portals can be removed from the automatic start process, or controlled with individual access permissions. You can access these services from Administrative Tools in the Control Panel on Windows platforms.



Open the list of services. The Intrex Xtreme services are entered here. You may start and stop, or switch every service to manual start from this menu. An additional change to the user account for a service can be accomplished directly from the system settings. Double-clicking on the service will open up a dialog box which you can use to change account details.



Change the user account here in order to enable access to external data sources like *BizWalker* and *FileWalker*. Individual services can be started or stopped manually from the Service Console using the buttons at the bottom.

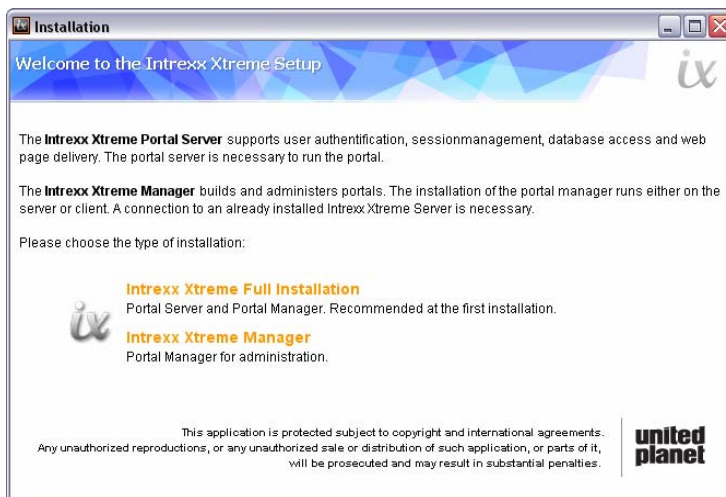
The *Supervisor* service be running at all times in order to ensure full functionality of Intrex Xtreme. If Apache Tomcat has been selected in setup as the web server, it will be displayed below the first two services. For access to the portal within the browser, this

service must be running. All portals that are installed on the Portal Server will be shown in the Service Console. The services for portals which are currently not needed can be halted by the Service Console in order to save resources.

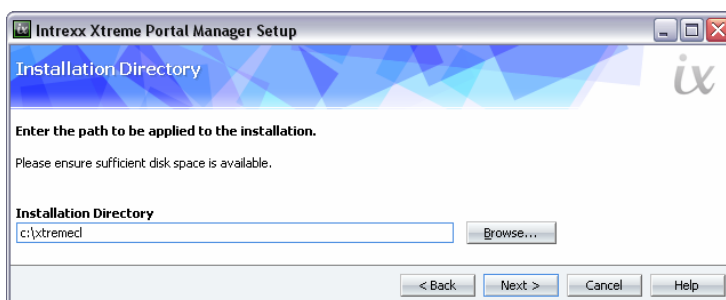
2.4. Installation of Intrex Xtreme Portal Manager

After installing the Intrex Xtreme Portal Server, the Portal Manager can be installed on the Portal Server at a later time. If portals must be administrated from multiple workstations, the installation of the Portal Manager is required on these computers. On these computers, an existing TCP/IP connection is required.

To install on Microsoft Windows platforms, launch the file *Setup.exe* from the CD. To install on Linux platforms please enter `./setup.sh` into the console. You will then be greeted by the welcome screen of Intrex Xtreme setup assistant, which will lead you through the installation process.



To install the Intrex Xtreme Portal Manager, please click the link for *Intrex Xtreme Manager*. When installing the Portal Manager, the setup assistant will lead you through the same dialogs that are described in the complete installation (see chapter 2.1 – *Complete Installation of Server and Manager*).




When the *Installation Directory* dialog is shown during setup, the default directory `c:\xtremec1` will automatically be entered. Select the directory in which to install the Intrex Xtreme Portal Manager. If you want to perform an update, enter the directory where an earlier version of Intrex Xtreme Portal Manager has been installed. Click [Next](#) to continue. Follow the directions of the assistant until setup has been completed.

3. PostgreSQL

3.1. Installation under Linux

The PostgreSQL database is a component part of every common Linux distribution (SuSE, Redhat (Fedora), Mandrake, Debian, and Gentoo). It must be installed afterwards with their respective system tools. With SuSE, you will use (for example) `yast` or `yast2`.

 Please install only PostgreSQL version 7.3 or higher. PostgreSQL is contained on the installation CD for Intrex Xtreme and can be used in Windows. On Linux, it is recommended to use the version corresponding to the installed distribution.

After a successful installation, the database must be configured.

3.2. Configuration under Linux

First, an additional user must be created. This will be used by Intrex Xtreme to create the database. Log on to the PostgreSQL database with the following command:

```
psql -U postgres template1
or
psql -U pgsql template1
```

The following message will appear:

```
Welcome to psql VERSION, the PostgreSQL interactive terminal.
Type:  \copyright for distribution terms
       \h for help with SQL commands
       \? for help on internal slash commands
       \g or terminate with semicolon to execute query
       \q to quit

template1=#
```

The user for Intrex Xtreme can now be created with this command:

```
CREATE USER xtreme PASSWORD 'password' createdb;
```

Leave the psql-Terminal with the command `\q`.

Now a password for the postgres- and/or pgsql-user can be entered. To do this, use the following command:

```
ALTER USER postgres PASSWORD 'password';
or
ALTER USER pgsql PASSWORD 'password';
```

Leave the psql-Terminal with the command `\q`.

The PostgreSQL database must be configured in such a way as to allow it to be contacted via TCP/IP. For this the file `postgresql.conf` must be edited. Since the file (depending on the Linux distribution) can be found in various directories, search with the following command for the file:

```
find / -name 'postgresql.conf'
```

The following values must then be changed in it:

```
tcpip_socket = true
port = 5432
```

Then restart the PostgreSQL service with the following command:

```
/etc/init.d/postgresql restart
```

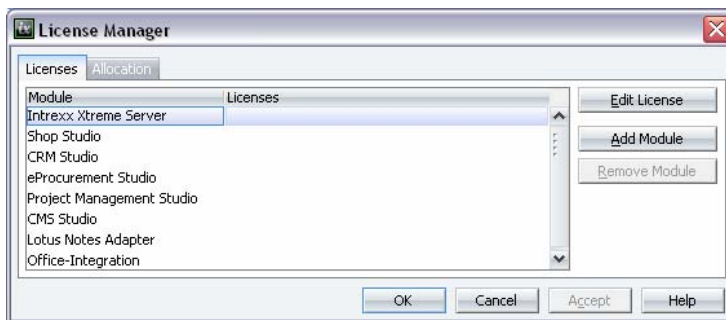
Now enter the PostgreSQL service in the runlevel so that the database will be automatically stopped and restarted when the computer is turned on. The Linux distribution system tools can be used for this. For SuSE, for example, you can use `yast` or `yast2`.

4. Licensing

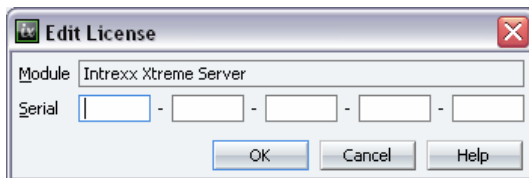
With the *License Manager*, the licenses you have purchased can be distributed to individual portals. The licensing for the Intrex Xtreme Studio Series will also be handled

by the License Manager. You can reach the License Manager from the menu *Extras / License Manager*.

4.1. Licenses Tab

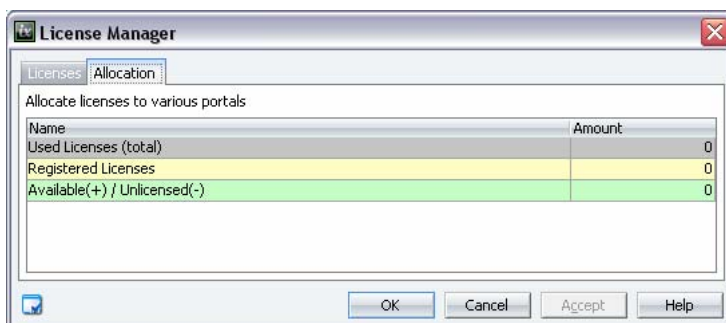


The licensing of the Intrex Xtreme Portal Server and the Studio Series will be handled here. Highlight the components you wish to license and then click *Edit License*.



Enter the serial number of your license here and click *OK*. With this, the licenses will be completely available for use. Modules or products of the Studio Series that are not contained in the list can be added with *Add Module*. Clicking *Remove Module* will remove the entry from the list.

4.2. Allocation Tab



The current distribution of licenses to created portals will be shown here. You can purchase Intrex Xtreme licenses as named-user licenses for complete portals, or licenses for individual applications.

With application licenses, the number of users in the portal is unlimited. You can only use the applications for which you have purchased corresponding licenses. By distributing the licenses, you can define the number of applications that are available to the individual portals.

If named-user licenses are purchased, you will require for each portal a sufficient number of licenses to provide users with logins. Here you can distribute the total number of licenses to the existing portals. The anonymous user requires no license. With this form of licensing, each application in the portal can be used.

The number of licenses for a portal can be changed by double clicking the column *Number*. The value in the line *Used Licenses (total)* will be automatically refreshed, and shows the number of licenses that have been assigned to the individual portals. In the

Registered Licenses line, the registered licenses will be displayed. The line *Available (+) / Unlicensed (-)* will show how many licenses are still free to be assigned to portals, or by how many licenses the number of registered licenses in total has been overrun.



If you use Intrex Xtreme for commercial purposes with an insufficient number of licenses, you are committing a breach of the license terms. In the browser view, if not enough licenses have been purchased, *reminder pages* will be shown repeatedly. In the user manager, if insufficient licenses have been purchased, no additional users may be created.

5. Uninstall

The Intrex Xtreme Portal Server and the Intrex Xtreme Portal Manager can be uninstalled from Windows systems from the Control Panel (Add/Remove Programs).