

**united  
planet**

**ix** START

UNITED PLANET INTREXX XTREME  
RELEASE 4.5

**Table of Contents**

**1. What is Intrex Xtreme? ..... 4**

**2. Intrex Xtreme International ..... 5**

**3. Intrex Xtreme on the Internet ..... 5**

**4. Software Updates ..... 5**

4.1. Starting the Update ..... 5


    4.1.1. Connection Settings..... 6



    4.1.2. Update Settings ..... 6







    4.1.3. Installing the Update ..... 7

**5. The Portal Manager ..... 8**


### Writing Conventions

In this handbook, text passages will be displayed in *italics* when they refer to settings in the displayed dialogs. Menu items that are available in context menus can, in addition, always be selected from the main menu. Main menu items will not be described if they are not available in the context menu. A description of the general main menu items can be found in the  *Center* handbook. Programming code in the text will be displayed in the Courier font. Context menus can be opened by clicking with the right mouse button on the described element.

In the following, *<xtreme>* refers to your Intrex installation path; under Windows, for example, this is usually  *C:\xtreme\*. On Linux, the normal install path is  */opt/xtreme/*. The following symbols will be used for designation of special kinds of information:

-  Important information
-  Tips and background information
-  References to additional information in an Intrex Xtreme handbook
-  Directories
-  URLs
-  Buttons in dialogs or assistants

### Previous Knowledge

In order to understand this documentation, no special previous knowledge is required. You can find out how to install Intrex Xtreme in the  *Setup* handbook. All Intrex Xtreme modules are described in the handbooks of the same name. If you have additional questions, you may also consult the help manual, available in the Portal Manager via the *F1* key. We wish you great success and enjoyment in using Intrex Xtreme!

**1. What is Intrex Xtreme?**

Intrex Xtreme is an integrated visual development environment for the creation and administration of enterprise, customer, and service portals on Linux and Windows platforms.

The system consists of the Intrex Xtreme Portal Server, which controls the portal and its underlying database, and the Intrex Xtreme Portal Manager, in which you will develop and administrate portals.

The Intrex Xtreme Portal Server is a platform-independent application server. Based on the portable *Java* programming language, it can be put into practice on almost any server platform, a fact that will benefit the security of your investments.

The Intrex Xtreme Portal Manager consists of several modules, with each module offering specific functions:

**Intrex Center**

The *Intrex Center* is a central point from which individual portals can be managed. Here, portals will be created, edited, deleted, exported, and imported. Portal permissions and properties, like webserver and database settings, will be controlled by this module.

**Portal Designer**

With the *Portal Designer*, any number of layouts can be created. You will define the style properties for frames and controls (such as buttons, links, and tables) here and define the frameset and the menu structure of the portal. Layouts are based on XML files, which contain all information defining them.

**Application Designer**

With the *Application Designer*, you will develop applications without needing to first master a programming language. All Intrex Xtreme applications are based completely off of XML, which can be converted into the output format of your choice with XSL transformations. For application development, a comprehensive catalog of templates is available.

**Process Manager**

In the *Process Manager*, business processes will be automated. The Process Manager reacts to changes in the database made by applications. It can also be used to change the data of an application using conditions you have set. With the help of time-controlled actions, you can cause reminders to occur when a deadline is reached, for example, or tasks to be delegated to a specific employee automatically.

**User Manager**

User accounts will be managed from the *User Manager*. Existing users can also be imported into this module. Here you will define user groups, organizational units, and positions, which will be used in the portal to control user permissions and set distribution lists.

**Integration Center**

You can find everything on the integration of external data into your portal in the Integration Center.

**Tools**

The *Tools* module offers a multitude of useful tools, like the SMTP service for eMail sending setup, the system monitor, system care, and much more...

Additionally, Intrex Xtreme offers the ability, via an API, to develop individual business logics to allow for connections to your legacy systems (SAP, enterprise resource planning, existing databases, etc.).

## 2. Intrex Xtreme International

### Languages

With the Intrex Xtreme portal, you will be able to communicate internationally. Menu items and text can be entered in any number of different languages. Each portal can be changed to the desired language with a language switch in the browser.


### Time Zones

With the *Time Zone* function, news items and appointments can be entered and displayed while taking account of global time zones. In Intrex Xtreme, all date entries will be saved in the database in GMT (*Greenwich Mean Time*). All appointments will be converted to the user-specific time zone for display in the browser.

### Date Format

The country-specific date format can be set in various ways.

### Decimal Format

The decimal format in Intrex Xtreme can also be adjusted for various regions. Further information on this topic can be found in the  *Multilingual Portals* handbook.

## 3. Intrex Xtreme on the Internet

### Metatags

Metatags play an important role for search engines, and with it, the findability and ranking of your site on the internet. In Intrex Xtreme, all common metatags can be composed and entered for every portal.

### Portal Availability

An anonymous (not logged in) user does not require a license to visit the portal. With this you can be sure that your portal is always reachable on the internet. With the permissions concept in Intrex Xtreme, it is very easy to show a representative site for general access, while making sure that other content is available on the internet only after login.

## 4. Software Updates

When you start the Intrex Xtreme Portal Manager, you will automatically be offered the option to update your software. By updating your software, your version of Intrex Xtreme will have access to current advances at all times. The update packets will be made available on the United Planet update server. The software update can be set up in such a way that upon each start of the Portal Manager, it will automatically check for appropriate updates to your system.

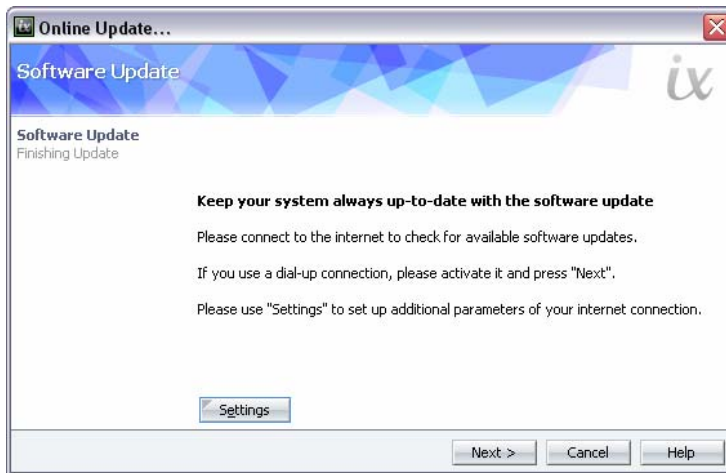
There are three ways to update your version of Intrex:


- Update of the portal server and Portal Manager on the server system
- Pure portal server update on the server system
- Pure Portal Manager update (this variant can be executed directly from a client for the Portal Manager installed on the system).

An update of the portal server must always be run before the Portal Manager can be updated. Please start the Portal Manager installed on the server system in order to update the portal server.

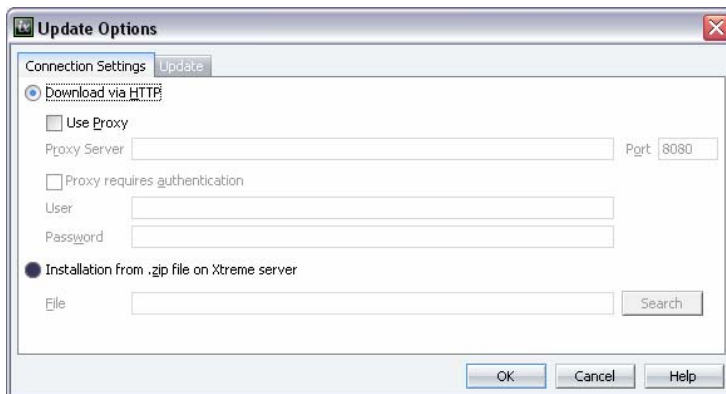
### 4.1. Starting the Update

The software update can be started at any time via the main menu item *Extras / Software Update*.





If no connection to the internet exists, please create one. Click  *Settings* to open an additional dialog, in which access to the internet can be configured and update settings can be changed.

#### 4.1.1. Connection Settings



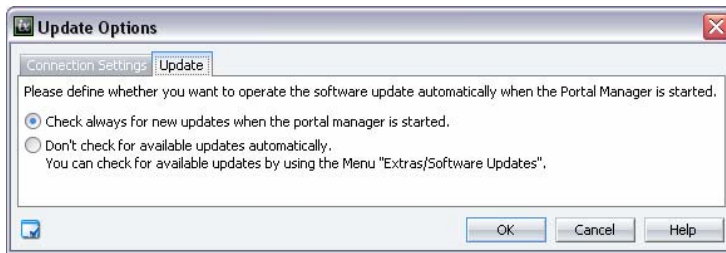
With the setting *Download via HTTP*, the client will access the United Planet Update Server and automatically download the updates available there. If you use a proxy to connect to the internet, you can enter the correct settings to do so by activating *Use Proxy*. Enter the IP address of the proxy server in the *Proxy Server* field. The default setting for the port is 8080. If authentication is required, please click *Authenticate via proxy* and enter a user name and password.

The setting *Install from ZIP file* allows updates can to be downloaded in the form of a ZIP file.

 Please note that, as opposed to updating via HTTP, all available updates will always be contained in the ZIP file. Only choose this option if updating the software via HTTP is not possible. You can find the current ZIP file for your version of Intrex Xtre on the United Planet serviceportal  [Intrex Live!](#).

#### 4.1.2. Update Settings

By clicking the *Update* tab, the settings for software updates will be opened.



With the setting *Check for updates upon starting the Portal Manager*, you can set the Portal Manager to notify you automatically of newly available updates when the Portal Manager is started.

If you prefer to initiate updates manually, you will select the option *Don't check for new updates automatically*. You can reach the software update at any time from the *Extras* menu.

If the settings for access to the internet and updates are complete, please click *OK*.

If a connection to the internet has been created, a list of available updates will be displayed in the following window. Here you will be informed of the contents of the update packages. You can display the description of an update component by clicking on a component in the list. By clicking *Next*, the download will start. The update package will be sent to the currently connected portal server.

#### 4.1.3. Installing the Update

The update will, if it is run on the system on which the portal server is installed, be accomplished for the Portal Manager and the portal server at the same time.

If the software update is run from a Portal Manager on a client, the currently connected portal server will not be updated. The update packages will only be transferred to the portal server system. In this case, a message will appear, notifying you that an update of the portal server on the server system must be accomplished.

This principle ensures that the update for each portal server must be accomplished before updating a Portal Manager on a client system. In order to update the portal server, start the Portal Manager installed on the server system.

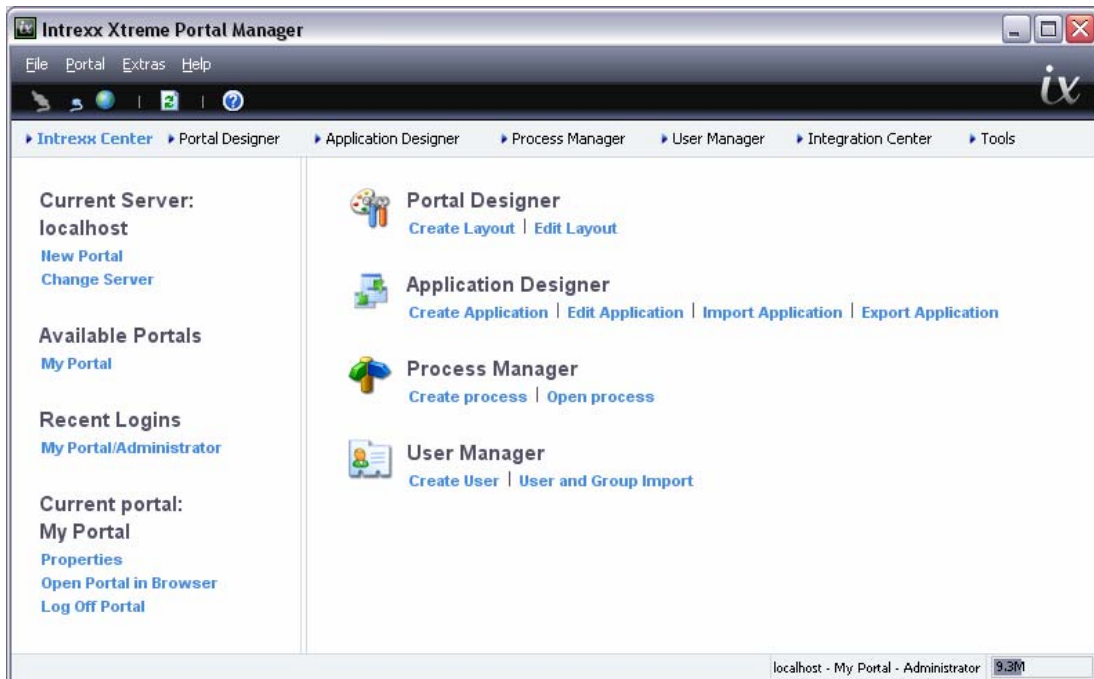
If you do not wish to install the updates immediately, simply click *OK*. The next time you start a software update from the *Extras* menu, you will be again offered the ability to install them, without requiring you to download the update packages a second time.

After completing the download, the installation can be started in the following window. A connection to the internet will no longer be necessary and can be closed.

- Please note for installations on a Linux headless server:  
The installer must be executed with the system property `java.awt.headless=true`. To do this, this option must be added to the file `/opt/xtreme/bin/linux/updinstall.sh` in the following way:

```
# now start the java vm
jre/linux/bin/java -cp $lc_classpath -Djava.awt.headless=true.
```

## 5. The Portal Manager



In the Portal Manager, portals will be developed and administrated.

In the upper area you will find the main menu. Under the main menu, you will see the toolbar, through which the most important functions will always be available. If you place the mouse cursor over a symbol, you will be informed of the function name via a quicktip.

The individual modules *Intrexx Center*, *Portal Designer*, *Application Designer*, *Process Manager*, *User Manager*, *Integration Center* and *Tools* can be opened from the module bar located below the toolbar. Upon starting the Portal Manager, you will automatically be placed in the *Intrexx Center* module. In the main menu you will find various functions, depending on the module currently in use.

The status display of the current system load can always be found in the lower right corner. Here, using megabytes as a unit, the amount of RAM being used by Intrexx Xtreme will be displayed.

Further information can be found in the  *Center* handbook.