

Intrex Professional

Intrex Compact

RELEASE 5



Expert


Contents



1. Expert Mode	4
2. Menu Extras / Options	4
2.1. Expert Options in the module Applications.....	4
2.1.1. Expert Tab	4
2.1.2. Details	7
a) Summary	7
b) XML Editor	8
2.1.3. Filter Editor	8
2.1.4. Expert Options in the Processes Module	9
2.1.5. Expert Tab	9
2.1.6. Details	9
2.1.7. Process Details.....	10
2.2. Expert Options in the Design Module	10
2.2.1. Details	10
2.2.2. Editing the Stylesheet.....	11






Copyright

This document is in all its parts protected by copyright. All rights are reserved, especially the right of translation, presentation, reproduction, and duplication. Regardless of the accuracy of the text, images, and programs neither author, publisher or translator may take judicial or other responsibility for possible errors and their consequences. The conventional names, trade names, product designations, etc. reproduced in this work may, even without special designation, be trademarks, and as such may be subject to legal regulations.

Writing Conventions

In this handbook, text passages will be displayed in *italics* when they refer to settings in the displayed dialogs. Menu items that are available in context menus can, in addition, always be selected from the main menu. Main menu items will not be described if they are not available in the context menu. A description of the general main menu items can be found in the  *Portals* handbook. Programming code in the text will be displayed in the `Courier` font. Context menus can be opened by clicking with the right mouse button on the described element.

In the following, `<intrexx>` refers to your Intrexx installation path; under Windows, for example, this is usually  `c:\intrexx\`. On Linux, the normal install path is  `/opt/intrexx/`. The following symbols will be used for designation of special kinds of information:


-  Information
-  References to an Intrexx handbook
-  Directories
-  URLs
-  Click on buttons

Background Knowledge

To understand this document, basic knowledge of the modules *Design*, *Applications*, and *Processes* are required. You can find supplemental information in the handbooks of the same names.

1. Expert Mode

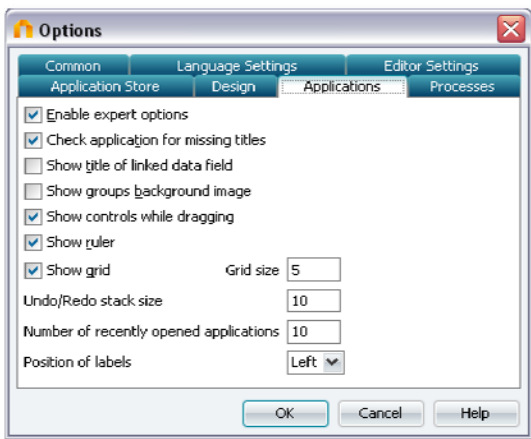
In this handbook, you will find an overview of the additional features of Intrexx that are available in the expert mode. On [Intrexx Live!](#), the United Planet service portal, you can inform yourself about available seminars from the United Planet Academy, which will allow you to deepen your expert knowledge of Intrexx.

-  Applications can, under certain circumstances, be made nonfunctional if incorrect settings are entered in expert mode. Please note that United Planet cannot offer support if this occurs.

2. Menu Extras / Options

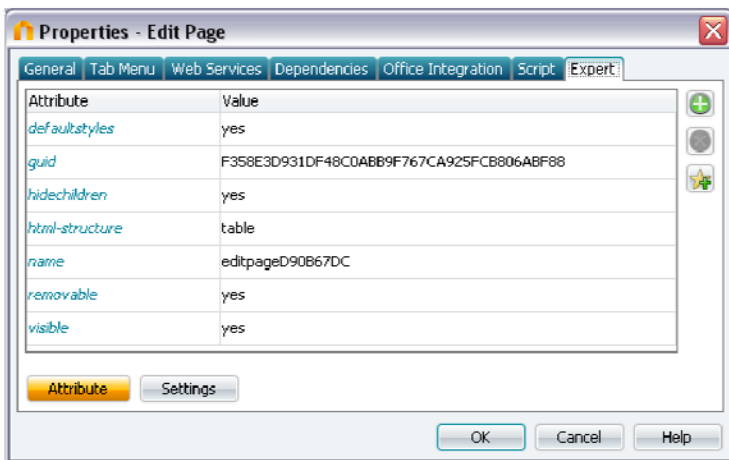
In the menu *Extras / Options* you can activate the *expert options* of the modules *Design*, *Applications* and *Processes*.

2.1. Expert Options in the module Applications



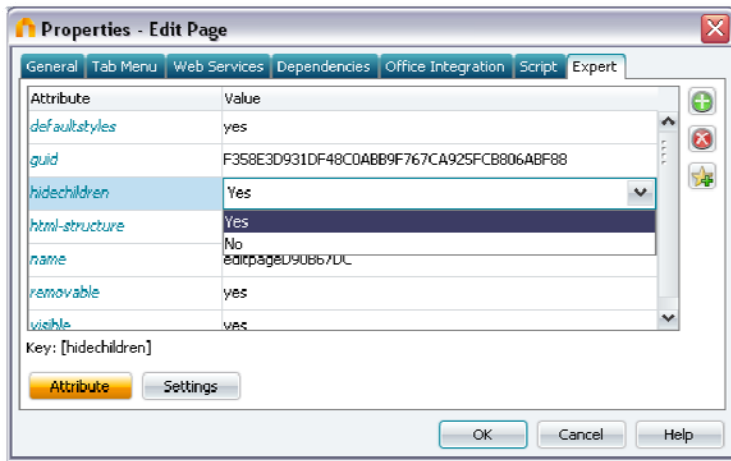
2.1.1. Expert Tab

If you *Enable expert options* on this tab, you will find the additional tab *Expert* in the properties dialog of elements.

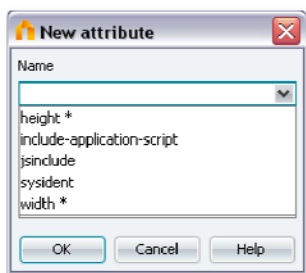


Attributes can be changed or defined here, which describe a corresponding element in its XML application file. You can find the documentation on individual expert attributes on [Intrex Live!](#), the service portal of United Planet.

You can change an existing attribute by clicking on the corresponding line in the *Value* column.

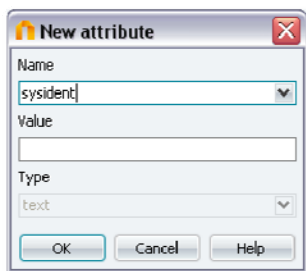


Existing attributes can be deleted by clicking *Remove attribute*. Selecting *Create GUID* will generate a GUID and copy it to the clipboard. You can enter a new expert attribute by clicking *Add attribute*.





In the *Name* selection list, all expert attributes that are available for the currently selected element will be listed.

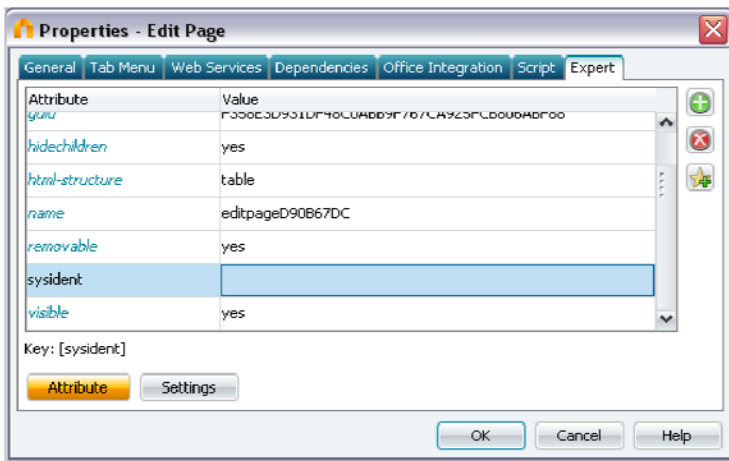
All attributes that only function under specific conditions are designated here with an asterisk. Please consult the United Planet service portal - [Intrex Live!](#) for the corresponding properties of the attributes.




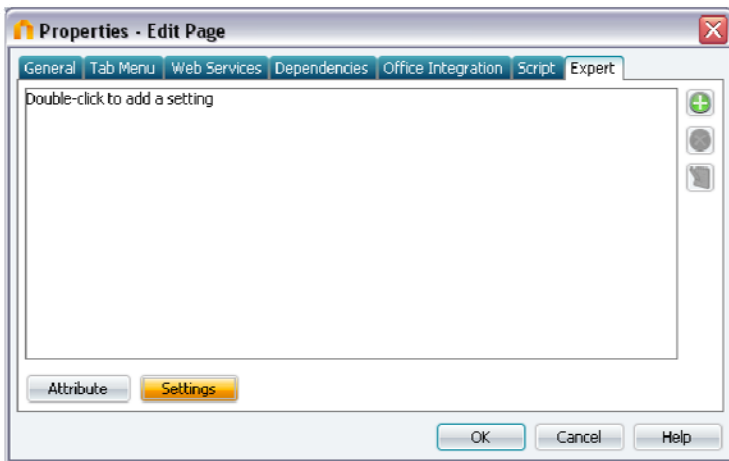
The value of the expert attribute will be entered to *Value*. In the *Type* selection list, the type of the attribute will be automatically defined:


- *text* for values in the form of character strings
- *boolean* for boolean values
- *integer* for number values
- *color* for hexadecimally entered color values
- *office-default* for values that are used in Office integration ( *Office Integration*).

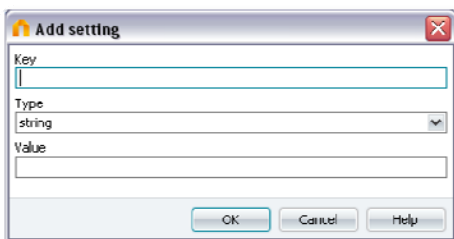
Click on  *OK* if the new attribute is to be created.



By clicking on  *Settings*, individual settings may be defined.



Click on  *Add setting* to create a new setting.

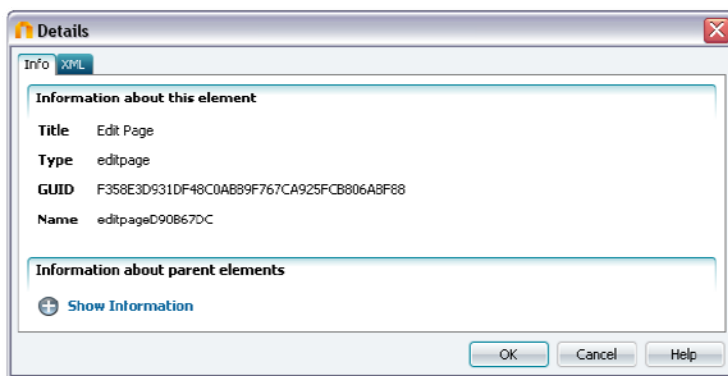


Settings will be entered into the XML in the element properties in the following format:

```
<property>
  <title de="Datengruppe" en="Data Group"/>
  <settings>
    <setting value="myValue" type="string" key="myKey"/>
  </settings>
</property>
```

In the *Key* field, enter the name of the key that you want to enter into the XML in the *key* attribute. In *Type*, the data type of the key will be defined. Under *Value*, you can enter the value that will be entered to the XML under the *value* attribute.

2.1.2. Details

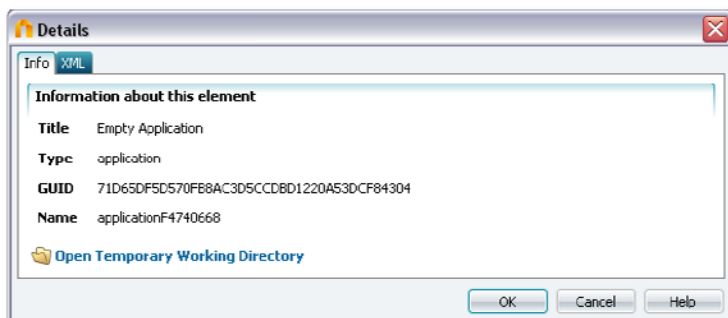


The *Details* dialog is also available when expert options are active, via the context menu of an element or by pressing the *F4* key.

a) Summary

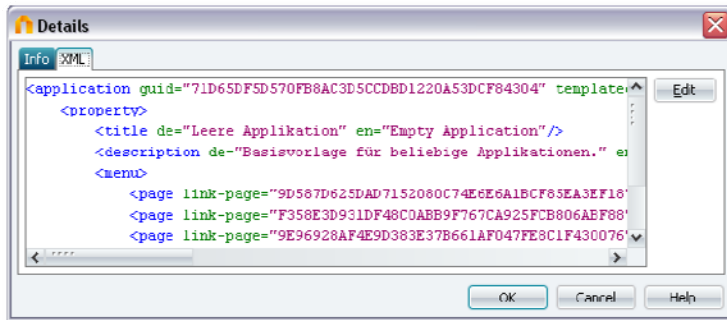
On this tab you will find the title, type, GUID, and name of the currently selected element in XML. The GUID (Globally Unique Identifier) is a unique identification of each element in Intrexx. The link to *Show information* allows you to reach additional information for all elements that are superior to the currently selected element (such as the page that contains an edit field, or the grouping that contains an edit field).



In the details window of the application node, you will additionally find the link to *Open temporary working directory*.





In this directory, the current version of the application will be saved on the client. On [Intrex Live!](#), the service portal for United Planet, you can inform yourself about the seminars offered by United Planet Academy, in which you can receive additional information on this topic.

b) XML Editor





On this tab you will find an XML editor ( *Editors*), in which the XML with the current settings for the selected element will be shown. Click  *Edit* to change these attributes.

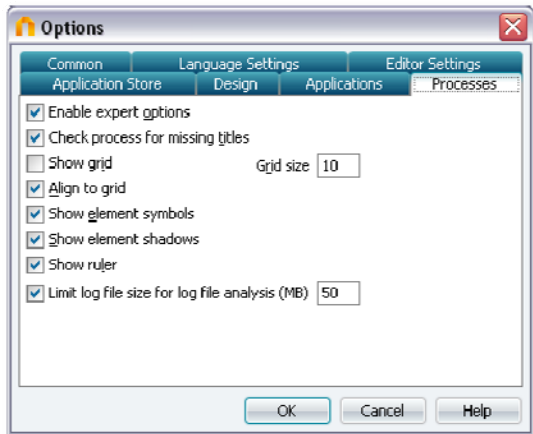
2.1.3. Filter Editor

 Filters can also be directly edited in expert mode. Click on  *Expert* in the filter dialog in order to open the filter editor.



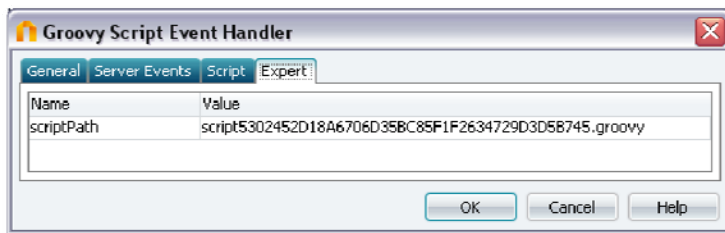
The source text for a filter that has been already defined in the standard dialog will be shown in the *Filter Editor* ( *Editors*) and can be further changed from there. The changes can be saved by clicking  *Save Filter and Close* or via the *File* menu. The filter will be made active after publishing the application.

2.1.4. Expert Options in the Processes Module



2.1.5. Expert Tab

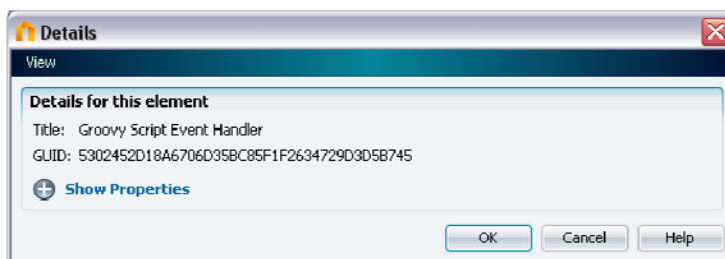
If you *Enable options for experts* on the *Processes* tab, you will find the *Expert* tab in the properties dialog of the elements *Groovy Script Event Handler*, *Groovy Script Action* and *Groovy Script Condition*.



Here the Groovy-Scriptpath can be modified.

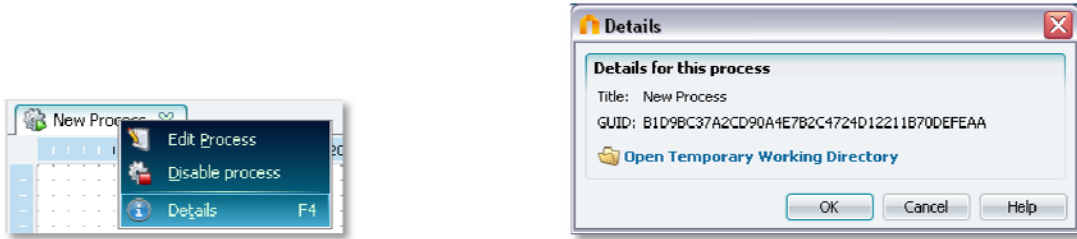
2.1.6. Details

The *Details* dialog is also available when expert options are active, via the context menu of an element or by pressing the *F4* key.



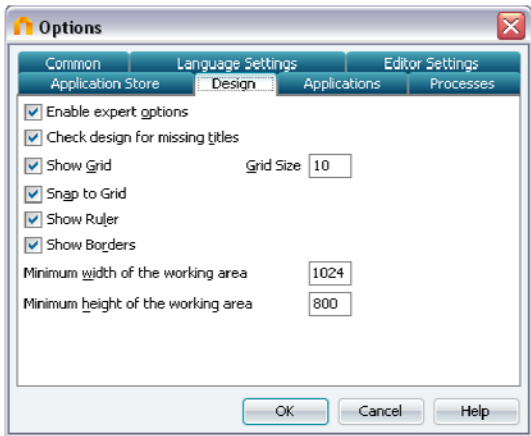
2.1.7. Process Details

The details regarding a process itself will be presented if you highlight the process tab and press the *F4* key or select *Details* from the context menu.



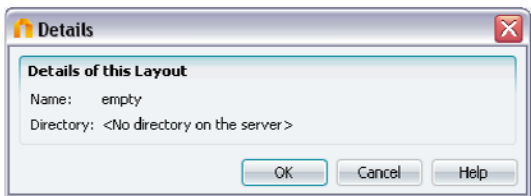
Here you will be informed of the *Title* and the *GUID*, and have the ability to open the *Temporary working directory*. The logfiles for the processes are saved to this directory as XML files (📁 Processes).

2.2. Expert Options in the Design Module



2.2.1. Details

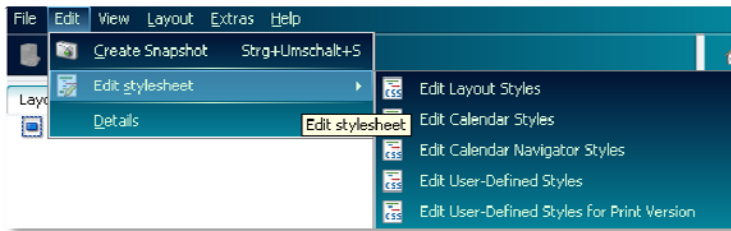
If you *Enable expert options* for the *Design* module, you will find, as in the modules *Applications* and *Processes*, the *Details* dialog, which is available via the key *F4* and gives additional information about the properties of elements.



Here you see the name of the layout and the name of the folder in which it is saved.

2.2.2. Editing the Stylesheet

When expert options are active, you have via the menu *Edit / Edit stylesheet* the ability to make changes directly to the CSS files that contain the style classes within them.



Here Intrexx provides for you a convenient Stylesheet Editor ( *Editors*).

