

# **Intrexx Professional**

# **Intrexx Compact**

RELEASE 5



Multilingual Portals

# Contents


<b>1. Portal Settings .....</b>	<b>4</b>
1.1. Date & Time.....	4
1.1.1. Time Zone .....	4
1.1.2. Date Format.....	4
1.1.3. Time Format .....	5
1.2. Number Format.....	5
1.2.1. Integer Fields.....	5
1.2.2. Number Fields .....	5
1.2.3. Currency Fields.....	6
1.3. Languages .....	6
1.4. Metatags .....	6
1.4.1. Meanings of Meta tags .....	8
1.5. Page Texts .....	9
<b>2. Application Elements and Menu Items .....</b>	<b>9</b>
2.1. Multilingual Titles .....	9
2.2. Multilingual Data Records .....	9
2.3. Language Adjustment .....	10
2.4. Elements in the Modul <i>Applications</i> .....	11
2.5. Exporting and Importing Application Texts .....	11
2.6. Options .....	12
2.7. Language-dependent References .....	12



## Copyright






This document is in all its parts protected by copyright. All rights are reserved, especially the right of translation, presentation, reproduction, and duplication. Regardless of the accuracy of the text, images, and programs neither author, publisher or translator may take judicial or other responsibility for possible errors and their consequences.

The conventional names, trade names, product designations, etc. reproduced in this work may, even without special designation, be trademarks, and as such may be subject to legal regulations.


## Writing Conventions

In this handbook, text passages will be displayed in *italics* when they refer to settings in the displayed dialogs. Menu items that are available in context menus can, in addition, always be selected from the main menu. Main menu items will not be described if they are not available in the context menu. A description of the general main menu items can be found in the  *Portals* handbook. Programming code in the text will be displayed in the `Courier` font. Context menus can be opened by clicking with the right mouse button on the described element.


In the following, `<intrexx>` refers to your Intrexx installation path; under Windows, for example, this is usually  `c:\intrexx\`. On Linux, the normal install path is  `/opt/intrexx/`. The following symbols will be used for designation of special kinds of information:

-  Information
-  References to an Intrexx handbook
-  Directories
-  URLs
-  Click on buttons

## Background Knowledge

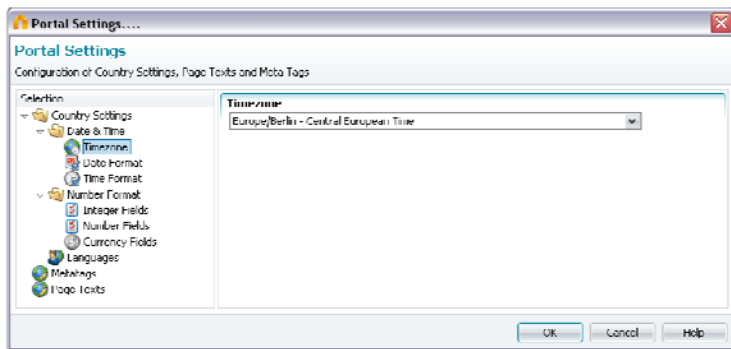
For this handbook, you require no special training. You can find helpful information in the Intrexx handbook  *Portals*.


# 1. Portal Settings

Intrex portals can be created in multiple languages and switched to a different language in the browser. The language switcher is an additional control that can be inserted in the *Design* module into a portal layout (  *Design*). Under the menu item *Extras / Portal Settings*, you will define the portal-wide defaults for language, date, time, and number formats.

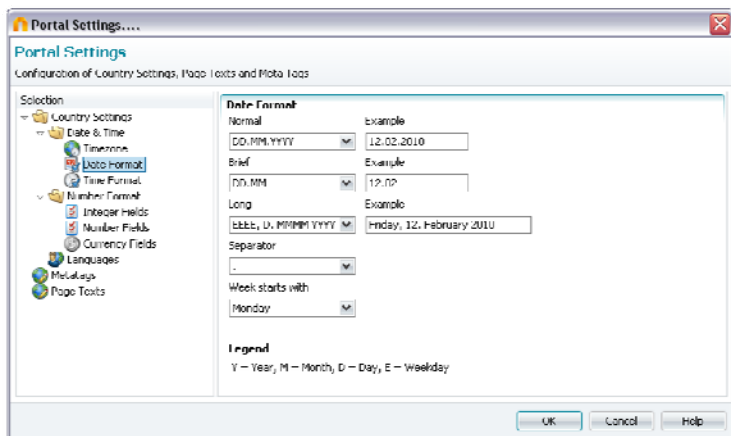
## 1.1. Date & Time

### 1.1.1. Time Zone



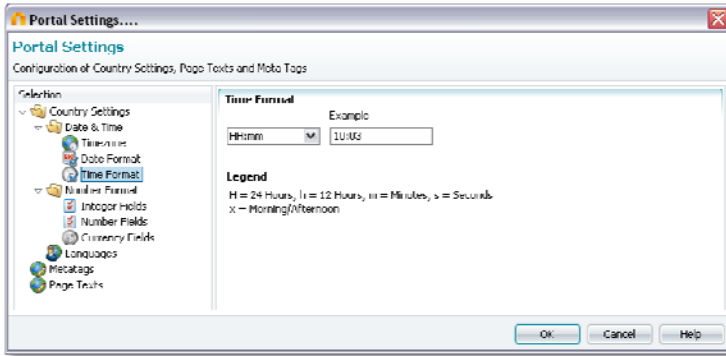
Here you will define the time zone that will be shown for date values in the portal. This time zone will be used as long as no individual time zone has been entered for a user (  *Users*). In Intrex, all date values will be saved in the database in GMT (Greenwich Mean Time). For display in the browser, the difference between the current time zone and GMT will be added to or subtracted from the current time.

### 1.1.2. Date Format



The format in which a date is displayed in the portal can be defined here. In the example fields, a preview of the selected format will be shown. The legend in the lower area will inform you of the meanings of the abbreviations used.

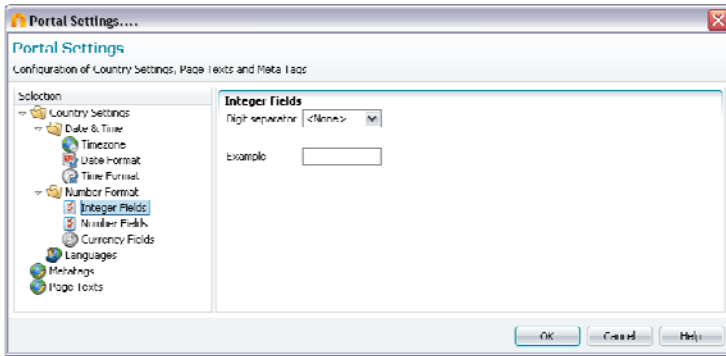
### 1.1.3. Time Format



Here you will enter the display format of time in the portal, as with the date format.

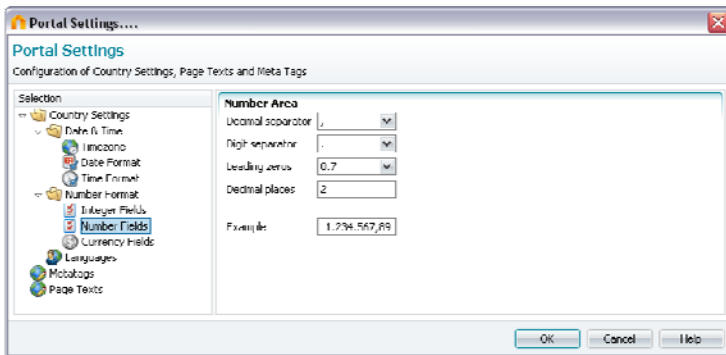
## 1.2. Number Format

### 1.2.1. Integer Fields



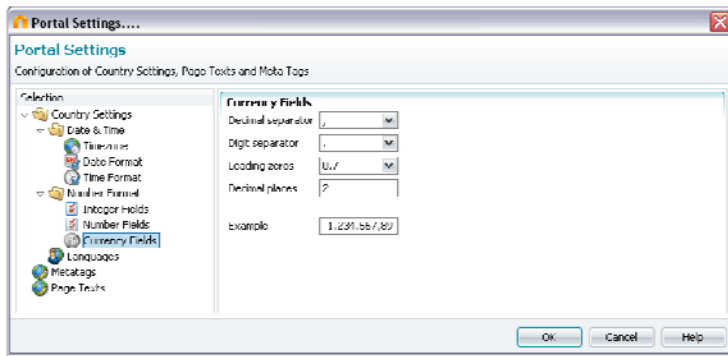
The *Digit separator* for integers will be set here.

### 1.2.2. Number Fields



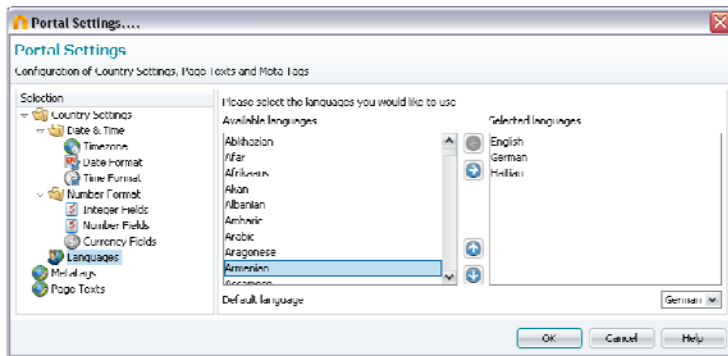
Define here how the *Decimal separator*, which will be used for non-whole numbers, the *Digit separator*, the *Leading zeros*, and the number of *Decimal places* will be displayed.

### 1.2.3. Currency Fields



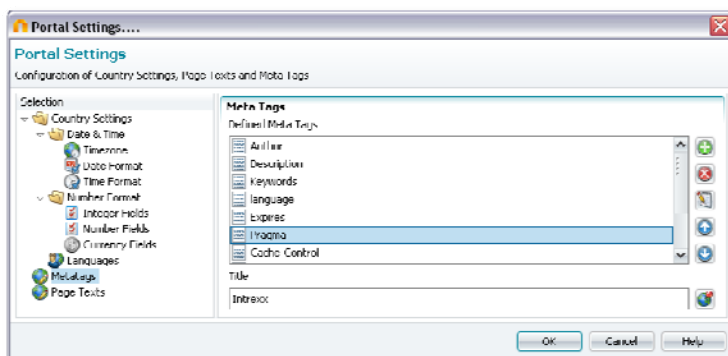
For currency fields, the same settings as with number fields can be set.

### 1.3. Languages




In this example, the languages *English* and *German* have been activated. If you move additional languages from the list of *Available Languages* to the *Selected Languages* list, they will also be available in the portal for use. You will define the default language via the selection list in the lower area of the dialog.

### 1.4. Metatags




With meta tags, information for web servers, browsers, and automatic search programs on the internet can be provided. Meta tags are HTML tags that describe the contents of an HTML page. Search engines will, with the help of meta tags, create entries in their

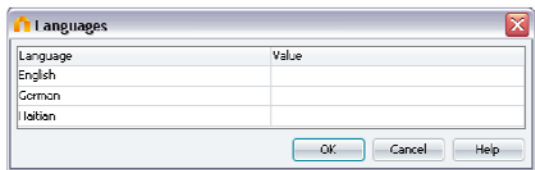
databases or calculate weightings in a list of hits. On the *Meta Tags* tab, meta-information can be entered in multiple languages.


By clicking on  *Add meta tag* in the portal settings, a dialog for editing the new meta tag will be opened.




In the *Meta Tag* selection list, you will find a list of the most common meta tags. In addition, individual tags can be defined. To do so, simply enter the name of your tag into the list.

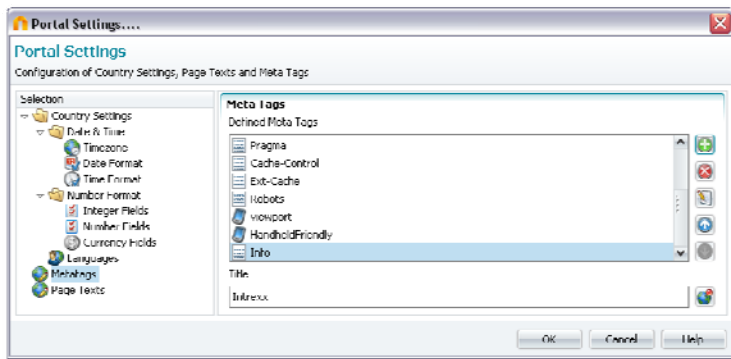
With *Value (single language)*, values for monolingual tags, such as *Robots = nofollow*, can be entered. With *Value (multi language)*, values can be entered in multiple portal languages. To do so, click on  *Multiple languages*.






Click on  *OK*.



With the *For mobile devices only* setting, the meta tags designated as such will only be generated on pages that are received by mobile end devices. To continue, click  *OK*.



The new meta tag has now been created. With  *Remove meta tag*, an existing meta tag can be deleted. By clicking on  *Edit meta tag*, the value and name of the tag can be edited. With the  arrow buttons, the order of the meta tags can be changed. The term entered into *Title* will be entered to the `<Title>` tag of the individual portal pages.

## 1.4.1. Meanings of Meta tags

### Description

The description may not exceed 200 characters. In the *Description* tag you will enter information about the company, product, persons, or page contents.

### Keywords

Keywords consist of individual words or expressions and should be separated with commas. With these keywords, the contents of the page will be summarized and output in variations. Select some appropriate formulations that a user would search for on the internet in order to find a page of your portal.

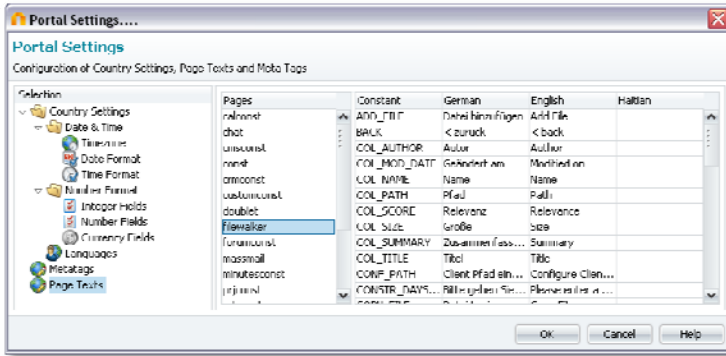
### Robots (Instructions for Search Engines)

Here you will define how the page will be handled by robots, which index pages for search engines.

- *noindex*                 Forbids the page from being indexed
- *index*                     Request for the page to be indexed
- *follow*                   Index page and follow links to additional pages
- *nofollow*                Do not index page, do not follow links

There are a large number of additional meta types of information that can be entered. For more information on the topic, please search for literature on the topic of web design or the internet.

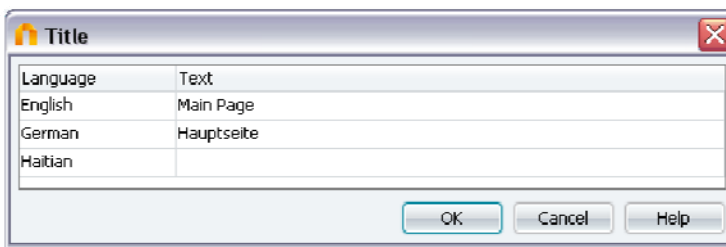
## 1.5. Page Texts



Here you will find all system texts, which will be used in Intrexx for messages, in lists, or other types of output. In the *Pages* column, these texts will be combined into groups. Clicking on an entry will show the constants of the group in the table to the right. The system texts can be edited here in the portal languages you have set. Changes will be saved by clicking **OK**.

## 2. Application Elements and Menu Items

### 2.1. Multilingual Titles



In the *Applications* module, you will find the globe icon in the properties of elements, and when editing the menu structure under the properties of menu items.

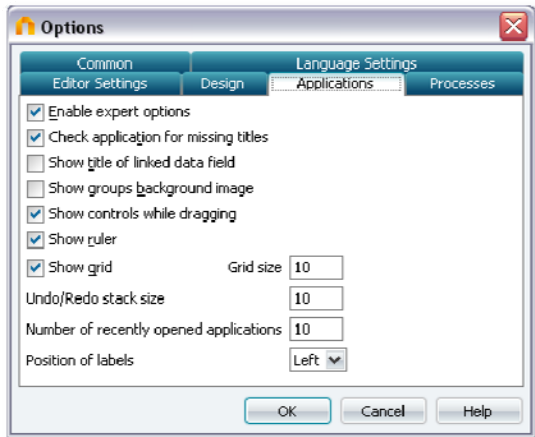
Clicking the icon will open a dialog in which the titles of elements or menu items can be entered in the various defined portal languages. When the language is switched in the browser, the text will be used for which the currently selected language has been entered.

### 2.2. Multilingual Data Records

In order to show data records in the correct language upon switching languages, the two-digit ISO 639 language code must be entered when composing a data record (such as *de* for *German*, *en* for *English*). Please take note of capitalization when entering these language abbreviations. The language-dependent display can then be controlled by a filter. In the filter, the value of the data field *Language* will be compared using the system value *Language*. Additional information on this can be found in the handbook *Applications*, chapter *Filter*.

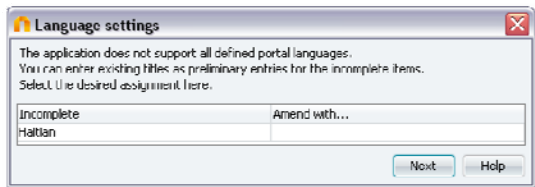
## 2.3. Language Adjustment

In the *Extras / Options* menu the setting *Check application for missing titles* can be set on the tabs *Applications*, *Design* and *Processes*. When opening an application, a design or a process it will be checked whether all defined portal languages are supported.



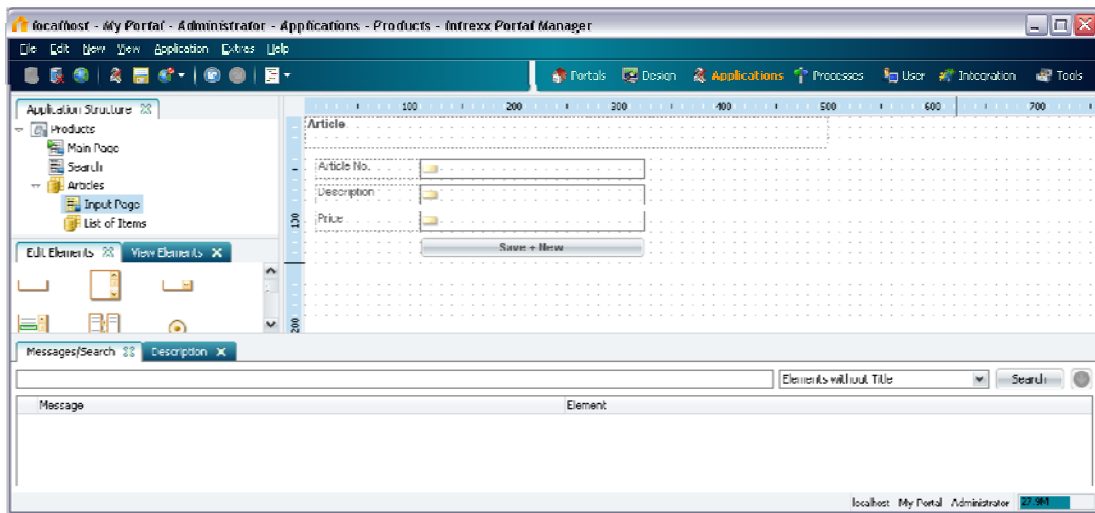
This is the case if for all elements, data fields, etc., titles have been entered in all portal languages. If you have, for example, entered an additional portal language in the country settings, titles will not automatically be entered.

If desired, missing titles can be filled in with titles from one of the other portal languages. To do so, select a portal language by clicking in the column *Amend with....*



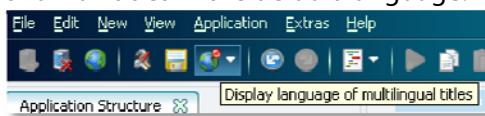
If no title exists in the selected language, the incomplete title will be replaced with an empty string.

In the *Applications*, *Design* and *Process* module, you can search for *Elements without titles* in one of the defined portal languages in the hints, which correspondingly can be shown in the lower area via the menu *View / Hints*.



## 2.4. Elements in the Module *Applications*

The language in which the titles of elements will be shown in the module *Applications* can be switched via the globe icon in the toolbar. The *Default portal language* setting will show all titles in the default language.



## 2.5. Exporting and Importing Application Texts

If you are currently using the module *Applications*, the title and name of all elements in an application can be exported in the form of an XML file. This function can be used in the translation of the portal into other languages. Clicking the menu item *Application / Export Texts* will create an XML file, which can be saved to a directory of your choice.

In order to edit them, open the XML file with a standard text editor. All elements of the application will be given with their *GUID*, as with the example below.

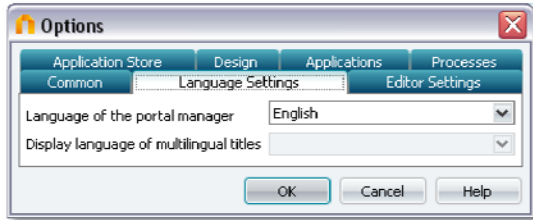
```
<labelcontrol guid="34381F99EBB8C2A53362EE3372D02A76FB04E6DE">
  <de>Reservierungsgrund</de>
  <en>Booking Occasion</en>
</labelcontrol>
```

The corresponding language can be recognized from the language abbreviations in the brackets. In our example, `<en>Booking Occasion</en>` stands for the title of the element in English, while `<de>Reservierungsgrund</de>` corresponds to the German title, which will be shown when changing the portal over to the German language. If you wish to edit a German translation, simply change the title contained between the language abbreviations (such as `<de>Old German title</de>` to `<de>New German title</de>`).

The individual elements can be found again in the text editor via their *GUIDs*. You can find the *GUID* of an element in the module *Applications* by highlighting the element in question. With the *F4* key, the *GUID* of the element will be shown, as long as the expert options have been activated from the *Extras / Options* menu. The *GUID* can be also found in the properties dialog on the *Expert* tab. Copy the *GUID* of the element to the clipboard and then use it to find the item in the text editor.

If you have edited the texts of an application, you can refresh the old titles in the application by using the XML file with the *Import Texts* menu item. Select the XML file that you have previously exported and edited here. After importing the file and saving the application, the texts will be refreshed.

## 2.6. Options



Under *Extras / Options*, the language of the Portal Manager can be defined. The new setting will go into effect the next time the Portal Manager is started. Additionally, the language can be selected in which the titles of elements will be shown.

## 2.7. Language-dependent References

When data groups with more than one primary key have references and the values of session variables are used in the foreign key, a reference can be set as language-dependent. An interesting aspect of this possibility is in connection to access to third-party data (🌐 *Foreign Data Access*).

In the following example, a jeans collection will be administered. If a user switches the portal to English, the colors of the corresponding models will be shown in the correct language. Please consult the handbook 🌐 *Applications* for the required background information about the development of applications.

### English Language Setting

Collection Jeans Color	
Jeans	Color
501	red
501	black
503	red
503	black

### German Language Setting

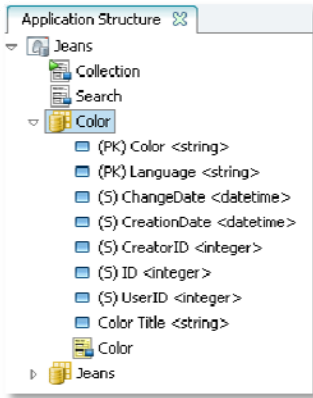
Kollektion Jeans Farbe	
Jeans	Farbe
501	rot
501	schwarz
503	rot
503	schwarz

On the *Color* edit page, a constant will be entered to the field *Color*, which in all languages uses the same character string for a color.

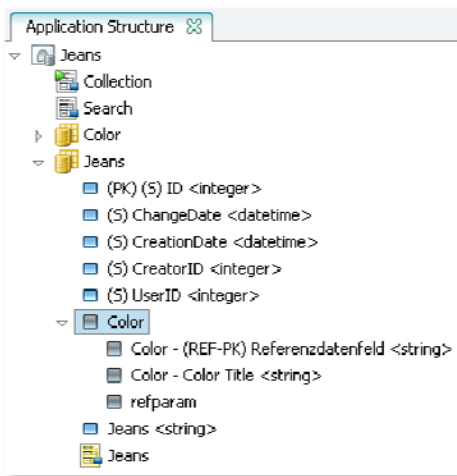
Color	RED
Language	en
Color Title	red

In the *Language* selection list, the corresponding language abbreviation will be selected here. In *Color Title*, the color that will also be shown in the table on the *Collection* page will be entered in its corresponding languages.

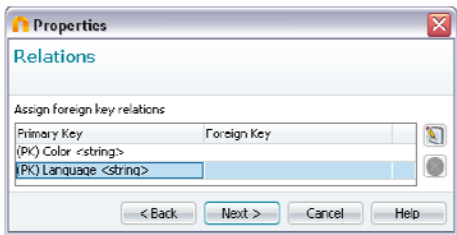
The structure of the application consists of the data groups *Color* and *Jeans*, whereby the *Color* data group contains two primary keys (*Color* and *Language*).



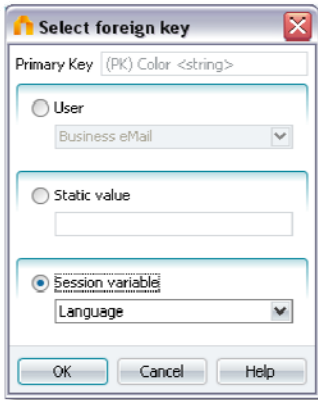
The *Color* data group will be referenced by the *Jeans* data group.



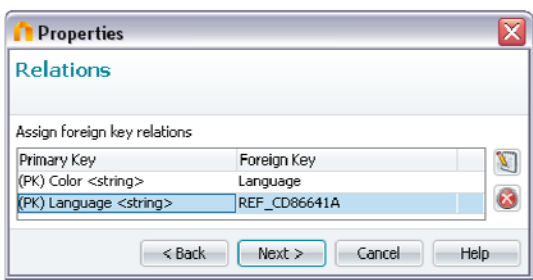
When entering this reference, you have the ability to assign foreign keys in the *Relationships* dialog.



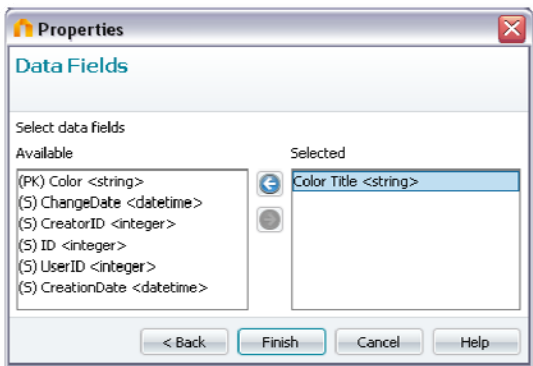
Highlight the *Language* primary key and click on  *Mark assignment*.



The session variable *Language* will be selected as foreign key, out of which in Intrexx, at any time, the language key of the current language setting of the portal can be read.

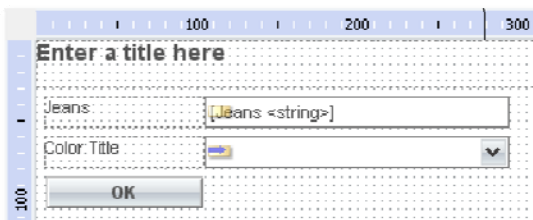


Click *Next* here.

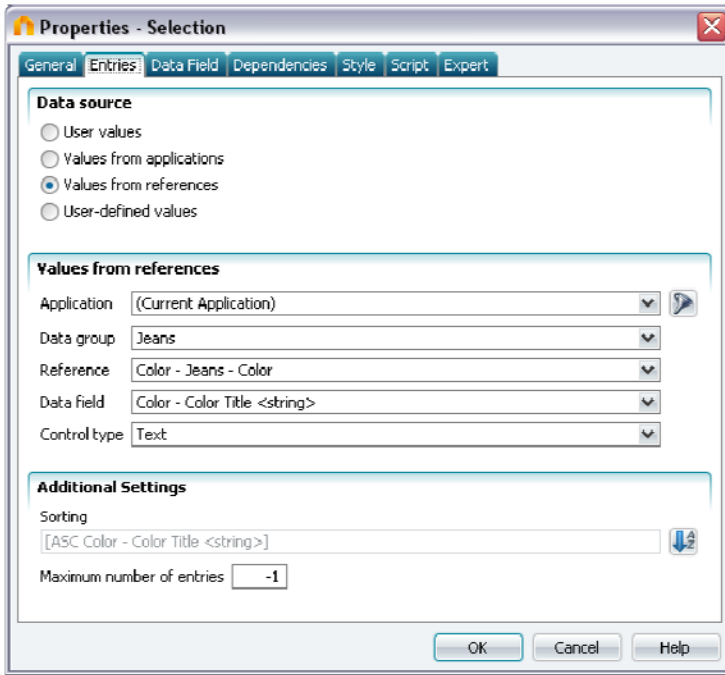


The *Color Title* will be selected as data field here. To apply these settings, click *Finish*.

On the *Jeans* edit page, the selection list that allows the color to be chosen can now be created.

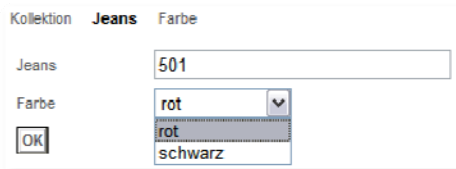


The entries in the selection list stem from the *Color Title* reference field.



Here is the *Jeans* edit page in the browser. The correct entries will be displayed in the selection list, whether the portal is set to English or German language.

### German Language Setting



### English Language Setting

