

# **Intrexx Professional** **Intrexx Compact**

RELEASE 5



New Features

## Copyright

This document is in all its parts protected by copyright. All rights are reserved, especially the right of translation, presentation, reproduction, and duplication.

Regardless of the accuracy of the text, images, and programs GmbH, neither author, publisher, or translator may take judicial or other responsibility for possible errors and their consequences.

The conventional names, trade names, product designations, etc. reproduced in this work may, even without special designation, be trademarks, and as such may be subject to legal regulations.

## Introduction

**Intrex is the leading software for successfully integrating people and information into processes.** Intrex enables web-based applications, intranets, extranets and complete enterprise portals to be created entirely without programming knowledge - in the blink of an eye by simply using drag and drop. An array of useful tools that have been precisely harmonised with each other support companies, administrative bodies and organisations in setting up and operating portals of all kinds, including employee portals, administration portals, customer and partner portals and even internet portals.



Intrex enables you to develop web-based applications, integrate existing data sources, manage processes and procedures or deliver everything to your smartphone (iPhone, BlackBerry, etc.) on demand. In this way, a modern enterprise portal emerges with powerful user management, a robust search engine and system administration that makes things easier. Thanks to a powerful layout and menu designer and web service orchestration, which customers like you are looking for, you are also able to create B2B portals or your web presence in no time at all with Intrex.

**Intrex is very easy to use.** If you are familiar with Excel or Word, you can also design and run an enterprise portal with Intrex. Intrex provides easy-to-understand wizards for this purpose which ensure that the portal can be created with just a few mouse clicks, rather than having to first undertake tedious programming. This easy-to-use approach and clear system structure mean you can avoid being dependent on external or internal experts and programmers. You are always in the driving seat.

**Intrex offers flexible enhancements.** You can either access numerous ready-made templates for your portal, or you can create your own applications very quickly with Intrex. Furthermore, the new **Intrex Application Store** gives you access to hundreds of company applications, which you can integrate into your company portal with a few clicks of the mouse. New applications and forms are being added every day. Every application that you download can be used within a few minutes as no installation on users' computers is needed. As a result, you can create your own custom-made company software.

**Intrex is 10x faster than comparable systems** Even a complex application can often be created within a few hours and tested as regards its suitability for everyday use. **As a result, risks are avoided from the outset.** This is one of the many reasons that 8 out of

10 interested parties prefer Intrexx when directly comparing other portal solutions. No wonder that several thousand companies and organisations already rely on Intrexx – and more are joining all the time.

## The ways Intrexx supports your work

### **Efficient information management using up-to-date data**

Intrexx enables all data and information to be collected centrally and distributed in a targeted manner to employees. This makes it possible to avoid both a tedious search and unnecessary maintenance of multiple data files. Furthermore, higher-quality and more up-to-date data also significantly reduce the error rate within a business process.

### **Reducing costs using electronic document management**

Intrexx enables documents to be entered electronically, edited on the portal and then subsequently archived after editing. In this way, costs due to the loss of documents are significantly reduced. As documents do not have to be printed, copied and distributed, it is furthermore possible to save paper and time. Office documents can also be edited directly on the portal using the Business Adapter for MS Office.

### **Automated workflows free up human resources**

Most administrative activities within a company or organisation can be carried out in less time and more reliably by using automated processes. Intrexx enables these processes to be completely automated. This frees up human resources that can then be deployed profitably elsewhere.

### **Simple integration of existing software solutions**

Intrexx enables the integration of data from software solutions already being used from other providers (e.g. SAP or Lotus Notes). As a result, even complex workflows can be automated and made faster. Standalone solutions can be easily integrated into the portal.

### **Stronger links with customers, partners and suppliers**

Intrexx likewise enables external customer portals ('extranets') to be set up. Such a portal can be used to ensure customers always have the latest information. This improves customer service even more and increases customer satisfaction. Collaboration with partners and suppliers can also be optimised using such an extranet.

### **Shorter communication channels**

Intrexx offers Web 2.0 applications such as wikis, blogs and forums as standard. These applications speed up and make the exchange of information easier within a company. They support internal knowledge management and foster collaboration between employees.

## Intrexx 5 - An Overview

The release of the new Intrexx version 5 has seen an expansion of our portfolio with a new Intrexx edition – **Intrexx Compact**. This edition is aimed at smaller companies with up to 25 workstations. It consists of a company portal that is ready for immediate use and which offers over 50 ready-made web applications and templates specially designed for the needs of small firms. As usual with Intrexx, this edition can also be customised to individual company circumstances. Furthermore, the new **Intrexx Application Store** offers hundreds of free and paid company applications, which can be integrated into the system with a few mouse clicks.

The successful Intrexx edition, **Intrexx Xtreme**, has been renamed **Intrexx Professional** in the course of expanding the product portfolio, in order to ensure both editions are clearly distinguished. This edition continues to be mainly aimed at ambitious medium-sized companies, public administration and other organisations.

In order to offer you even more options when creating web applications and portals, we have equipped Intrexx 5 with powerful new features. They are closely geared to the wishes and requirements of our customers and partners.

## Intrexx 5 – New Features

In recent years we have increasingly seen an expansion of the application areas of Intrexx beyond the traditional enterprise portal. For example, in many cases Intrexx is no longer just used as an internal portal, but rather also as a Business-to-Business portal to directly integrate end customers, suppliers or business partners. This places entirely new demands on Intrexx as regards layout and the performance of the software. Continuing high usage in public administration raises additional requirements as regards a barrier-free user interface.

Furthermore, more and more customers also need to be able to deploy mobile portal applications – whether to integrate field staff or to enable supervisors and management to access important information even when out of the office.

Moreover, the portal has now finally completed its transformation from intranet to process portal. Today, modern technologies have made it possible to use the portal as a platform for powerful, browser-based applications.

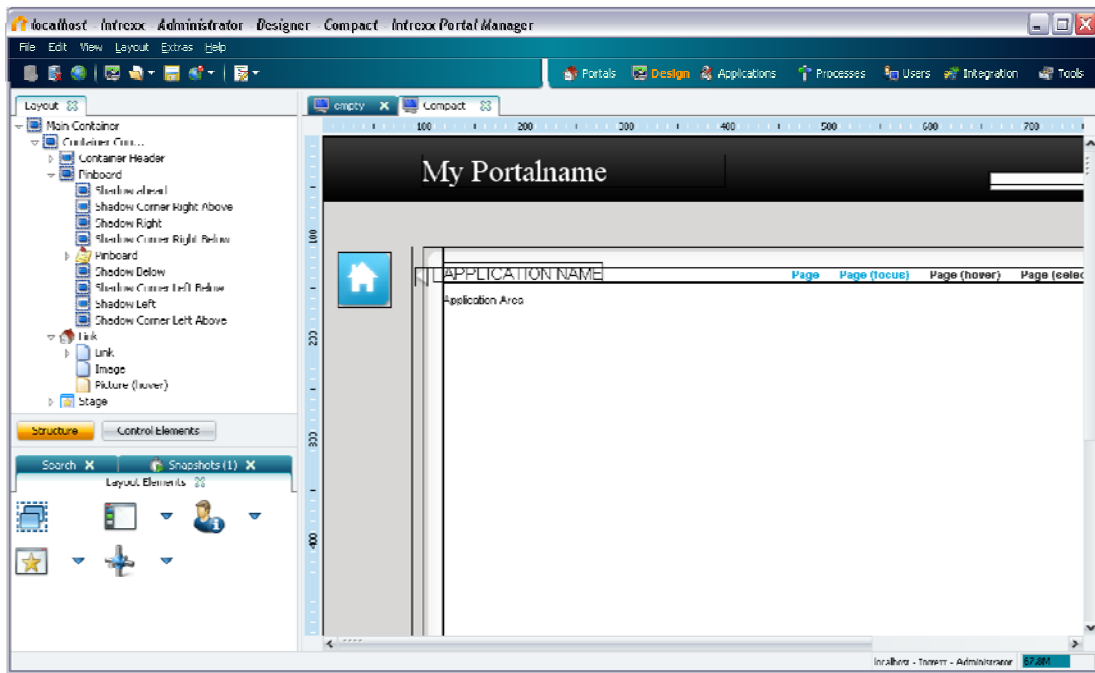
We have incorporated this new and expanded requirements profile into the development of Intrexx 5. In addition to the ongoing enhancement of usability, flexibility and scope of functions when creating applications, we have also consistently pursued the following objectives here:

- Maximum performance when used on the internet
- Barrier-free accessibility
- Implementation of portals and applications for mobile devices
- Optimisation of process management

## Intrexx on the internet

Intrexx is increasingly used to build a web presence and B2B portals (or extranets) which ensure customers, partners and suppliers have access to certain content. In order to offer you as much flexibility as possible when designing your web presence, we have developed a completely new *Designer* for Intrexx 5, which enables all elements of a layout to be edited in a targeted manner.

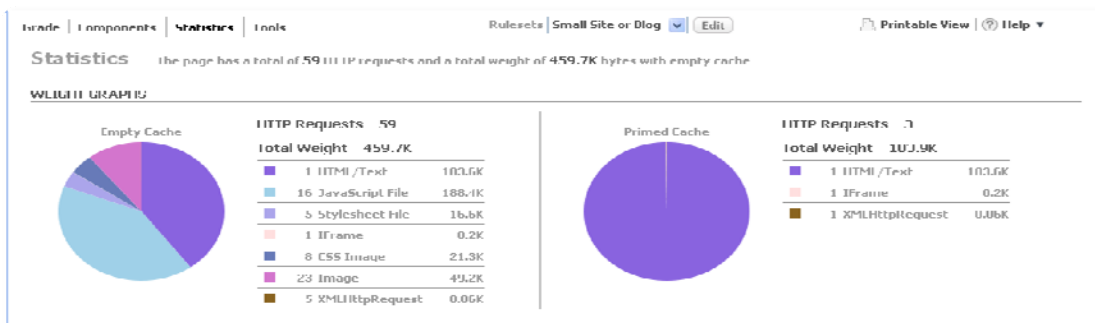
The new *Designer* enables you to position a layout's elements and additional controls exactly as you wish and imagined. This offers you unprecedented flexibility when creating your design. You can of course design your company portal to be completely in harmony with your company's corporate design - with a logo, in-house colour scheme and font. In addition, you now also have the option of choosing from a wealth of brand-new layout templates. Classic, modern or futuristic – the choice is yours.



The new *Designer* and layouts created with it are now based completely on CSS. This produces a more streamlined layout and also means that framesets are no longer used. In this way, not only can pages be set up much faster but searchability is also optimised for search engines.

While load size plays a rather minor role when using a traditional intranet, it is a decisive competitive factor when using the internet. The further the end user is located from the server, the more acutely any difference will be felt. For this reason, we have fulfilled one requirement in particular when redeveloping the *Designer*: speed. Enterprise portals and webpages created with Intrexx 5 are unbelievably fast. As soon as you call up your portal, comprehensive caching mechanisms are activated. In this way, we are able to shorten load time by up to 90% during internet use (depending on the layout, number and size of graphics used, etc.)

The impact of caching mechanisms is presented in the following chart:



If 59 requests are sent to the server when a page is first loaded, caching then reduces this figure to 3 for subsequent times the page is loaded.

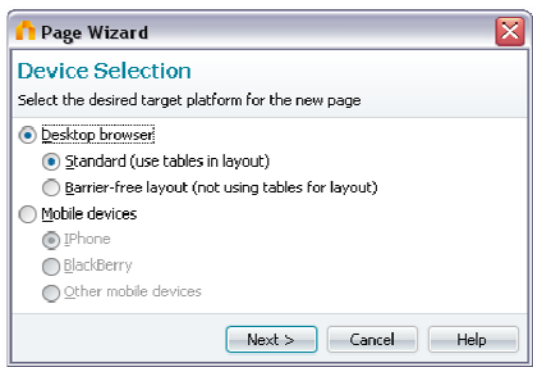
Further notable performance advantages were able to be generated through intelligent optimisation of JavaScript and CSS loading. For example, only the files that are required immediately for a page are loaded at first now. JavaScript and CSS files needed at a later

point are then preloaded for subsequent access after the page has been built. The user remains unaware of these background processes.

The measurement of an Intrexx portal's page performance with the Yahoo tool, *YSlow*, produced the following results: the first-time loading of a simple Intrexx portal page received a Grade A (optimal load behaviour) from *YSlow*. The loading of a typical application page with tables and numerous control elements also received a Grade A. The loading of a comprehensive portal with many portlets and complex controls still managed to achieve an extraordinarily good result of Grade B. Intrexx is therefore significantly faster than many webpages in page building.

## Accessibility

Widely accessible applications can also now be created quickly and easily with Intrexx 5. Intrexx here follows the requirements of BITV (German Barrier-Free Information Technology Act) and WCAG (Web Content Accessibility Guidelines) for accessibility to intranet and internet content.



The new *Designer* enables application pages and navigation to be implemented entirely without layout tables. As a result, support is also now provided for end devices such as Braille reading devices or screen readers that analyse the content of a webpage and read it aloud in order. These screen readers are also supported by special jump destinations ('skip links') for the most important areas within a page (navigation, content, etc.)

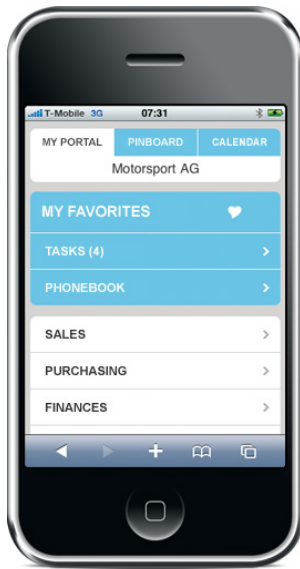
Furthermore, 'ARIA roles' (Accessible Rich Internet Applications), which indicate the properties of the element to the user, can now be defined for most design elements. For example, roles for navigation, content areas, banner ads, graphics, etc. can be specified directly in *Designer*.

By using progressive enhancement, Intrexx further offers the possibility of JavaScript-free operation of a portal (with the exception of certain specific controls). This technology enables portal pages to always be outputted with the best possible structure for each end device. Furthermore, all graphics can be given static and dynamic alternate text in order to support devices that cannot display images.

In addition to ensuring extensive barrier-free accessibility for your portal, these Intrexx 5 innovations also contribute to improved discoverability for your pages via search engines.

## Implementation of portals for mobile devices

Imagine being able to retrieve data from CRM using your smartphone while on the move. Or being able to approve an urgent investment application from your colleague. This is no longer a problem as of today! By using the newest technologies, you are able with Intrexx 5 to create your own mobile company applications for iPhone, iPad, BlackBerry, etc. with just a few clicks of the mouse.



You don't even need programming knowledge to do this: you build your application very simply using drag & drop with ready-made components! Intrexx takes care on its own of the technical implementation and special requirements of your smartphone (such as bandwidth, JavaScript support or sliding effects).

You can also deliver data from other software solutions quickly and easily to your mobile phone in this way. Simply integrate your data into the portal, create the mobile web application - and you're done.

### **Design and design options**

The options when choosing a design differ according to the capabilities of the mobile device. They are determined by the access bandwidth and the capabilities of the installed browser. While Apple's iPhone offers the largest possible range of functions, other devices such as an older-generation BlackBerry do not support JavaScript at all and, as a result, only offer some basic options.

We have taken these circumstances into account in the development of Intrexx 5. In addition to sophisticated intranet and internet pages, the new *Designer* also enables you to create attractive layouts for the various mobile devices in an instant. During this process you can determine which end devices should be supported by which layout and whether the end device offers JavaScript support. The Intrexx server automatically delivers the desired layout according to the end device ID. In this way, you are able to support not just the iPhone, but also less powerful end devices.

## **Application design and structure**

The Intrexx 5 *Designer* ensures that the creation of a mobile application is just as simple as creating a 'normal' portal page. If it is specified when creating an application page that it should display on a mobile device, a page is automatically generated that is based completely on CSS and pure HTML. The application creator does not need to have any particular knowledge of CSS at this point - rather, they create their application pages just as before. The creator just has to ensure that the page is small enough to appear on the end device's display.

The different design options when building the application also depend on the capabilities of the respective end devices. While end devices without JavaScript support do not offer as many selection options, additional options can even be selected for the iPhone with its comprehensive functions. For example, a button can be used to specify whether the page should slide in from the right or left of the screen (sliding).

It is always advisable to familiarise yourself with the properties and operation of end devices to ensure optimal use. In order to make things easier for you at the start, we will supply you with corresponding documentation for current devices.

## **Menu set-up**

The new *Designer* also enables you to create your own menu for each layout. For example, you can offer special applications exclusively for the iPhone, while other applications are also used on other mobile devices. An application homepage specially customised for the end device can also be easily set when designing the menu structure. Furthermore, you have the option to include an application as often as you like in the menus. This ensures the greatest possible freedom when designing your layouts.

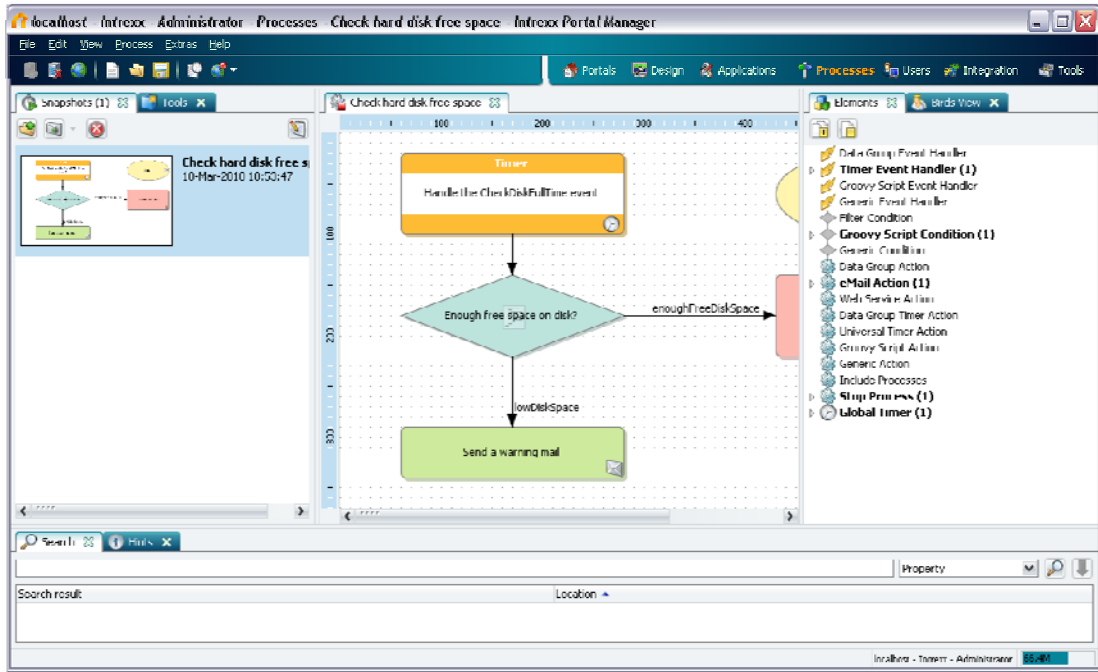
## **Optimised process management**

The Intrexx *Process Designer* enables you to electronically map and automate time-consuming work processes. In this way, you can handle your business processes with greater speed, transparency and efficiency. You can integrate all participants into the process chain in an optimal way and 'lead' them through the entire process. As a result, you guarantee the seamless flow of processes – completely regardless of where the person concerned is located at that time.

Thanks to the graphical interface of the *Process Designer*, it is very simple to define conditions and actions. For example, time-controlled reminder e-mails can be sent if a colleague has not processed an application within a certain period of time. It can also be specified that sales are automatically notified as soon as a new interested party is in their area of responsibility.

The management possibilities are extremely flexible and ensure processes are seamless in every organisational unit. As the *Process Designer* is fully integrated into Intrexx, all processes can also be delivered to mobile devices with a few clicks of the mouse.

As with the *Designer*, we have also completely revamped the *Process Designer* for Intrexx 5 and implemented a new interface so that we can meet your requirements exactly in the future as well.



The *Process Designer* now offers you the option of being assisted by a wizard when creating an electronic process. At each stage it shows you which elements have just been created and which steps are still to come in the process. In addition, the *Process Designer* also alerts you to process elements that have been defined incorrectly or incompletely. As a result, you have an optimal overview at any given time of your processes.

Another important innovation is the powerful Groovy Editor which we have now integrated into the *Process Designer*. This offers a syntax test and a Groovy library for selecting predefined processes and enables even more events to be reacted to, e.g. user logon, creation of users or publication of an application.



We have added an additional view so that you never lose the overview even with complex processes: the 'bird's eye view'. This shows you all elements of a process at a glance – including those that fall outside the visible area of the screen. In this way, you can jump very quickly to each desired point in the process.

In order to be able to find individual process elements even more easily, we have now also equipped the *Process Designer* with a search function. This search makes it easier for you in future to quickly expand your processes and simplifies their management significantly.

In order to further increase the flexibility of the *Process Designer*, we have dispensed in Intrexx 5 with the tree view that was previously available as an alternative. As a result, you now have even more options when creating electronic processes.

For example, you now have the option to react simultaneously to different events (insertion and change, etc.) with a data group action.



Furthermore, filter conditions now always have the outputs (Yes/ No/ Always). This makes the creation of filters easier and speeds up this process significantly. An array of new elements now also offer you even more flexibility when carrying out any actions as a reaction to events.

We have also overhauled how the *Process Designer* is used. The cumbersome connecting of different process elements has been reduced to a minimum by the new interface. If elements are dragged over existing elements using the mouse, they are then automatically connected to each other.

## Summary of the most important innovations

### Designations

The names of Intrexx modules have changed. Here is our updated dictionary:

Old name	New name
Intrexx Center	Portals
Portal Designer	Design
Application Designer	Applications
Process Manager	Processes
User Management	Users
Integration Center	Integration
Tools	Tools

## Editors

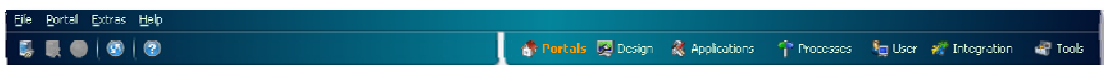
All editors (Java and Groovy script) were intensively reworked and now offer a whole series of new features that will make the work of Intrexx experts significantly easier. These now include the option to manage script parts in libraries, line numbering, a syntax test and much more.

A new addition is the CSS Editor, which now enables the direct editing of style sheets in the *Design* module.

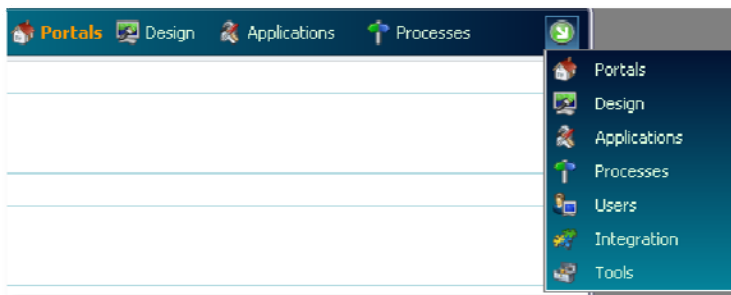
## Operation

### Toolbar

The individual Intrexx modules are now displayed in the right portion of the toolbar. The most important functions of the module currently open can be accessed as usual on the left-hand side of the toolbar.



Depending on the window size of the *Portal Manager*, the part of the toolbar that contains the names of the modules is automatically minimised and pushed to the right.



In this case, you can switch to the individual modules using the  icon.

## Design

### CSS positioning

The *Design* module, previously known as the *Portal Designer*, has been completely revamped. It is now possible to freely position a layout's elements (including additional controls), in the same way you are already familiar with when creating applications. The *Designer* now offers you the flexibility to create your desired design in line with your ideas, without imposing the restriction of overly strong user guidance on you.

In this way, the new CSS positioning opens up the most modern design possibilities for you. In order to give your portal a modern appearance, you are also welcome to draw on our support services. For a low fee, our skilled *designers* can give your existing layout a 'makeover' and bring it up-to-date – let us surprise you. We will of course update your existing layout with the new structure during the update process. However, minor differences are unavoidable here as the layout was frame-based up to now and the new structure is based completely on CSS positioning.

### Wizards

There are wizards, which facilitate the quick customisation of a layout, for nearly all elements that can be positioned in a layout. Using the 'New Layout' wizard it is possible to

create a complete layout in seconds by choosing a certain structure, colour scheme and style.

### **Element settings tab**

An ID, a multi-lingual title and a role can be assigned to a chosen element here. Furthermore, you can change the element style directly using 'Styles'. Experts can also directly undertake manual changes to the actual CSS style class using the CSS Editor.

### **Layout structure tab**

The layout structure functions like the application structure and shows the created elements of the layout as per their hierarchical structure.

### **Application menu element**

Application menus can now be positioned both horizontally (left or right) as well as vertically (up or down).

### **Layout properties**

Layouts can be assigned to User Agents (identification of browsers or devices) via the properties of a layout. In this way, a custom layout can be determined for each end device accessing a portal.

### **Tables**

Several styles can now be created for tables. These can then be selected in applications for individual tables.

## **Applications**

### **View menu**

The individual areas such as 'Application structure', 'Toolboxes', 'Notes' and 'Description' can now be flexibly arranged in the *Applications* module. If required, they can also be closed or opened via the new *View* menu.

### **View tab**

The *View* tab is located in the properties dialogue box of the elements. You can now also directly edit styles in CSS here. The layout and handling of the tab was harmonised with the style dialogue boxes in the *Design* module (formerly known as *Portal Designer*).

### **Mobile devices**

Individual pages can be transformed for display on mobile devices. Using the 'Mobile device' checkbox, you can specify whether a page should be deployed for display on a mobile device. Intrexx automatically takes care of the special requirements of the respective end device.

A page can now optionally be built with or without a table layout. In this way, you are able to visually design a page just by using the CSS properties.

### **Page wizard**

The new page wizard enables new pages to be created quickly and easily in an application.

You choose the destination system (mobile device or desktop browser) and the desired page type via the wizard.

- Overview page - listing of data
- Input page - recording of data
- View page - detailed view of a dataset
- Search - search of database

In addition to the basic settings for a page, the wizard enables the easy creation of data fields, the correct positioning of navigation elements, the correct formatting of elements and quick configuration of buttons. In this way, you are able to create complete applications within minutes even for the iPhone or iPad.

#### **New button type: *Action control for mobile devices***

The action control for mobile devices can specify for navigation on the iPhone whether the destination page should appear from the right (lower level) or the left (higher level).

#### **Search**

In addition to the *Search* page, further search configurations can now be set up in an application with the aid of the new *Search* view element or the new *Search* button action. For example, different rights scenarios can now be taken into account.

#### **New control types for input field**

Text messages can now optionally be sent directly or telephone calls can be placed using the links of an input field with the *Telephone* control type. The standard protocols of *tel* and *callto* can be selected here. In addition, another protocol of choice can be specified per control.

Links to applications on the web are created using the *Web application* control type. The necessary parameters can be specified here in the configuration of the control. The values are supplied dynamically from the input field and sent when the link in the browser is clicked.

#### **Tree**

The new *Tree* view element enables the hierarchical presentation of application data with the aid of folders in a tree structure. While this element was only available up to now in the *Tree* template, it is now possible with Intrexx 5 to equip any template with a tree view.

#### **Navigation element**

We have revised the navigation element of tables as regards layout and simpler configuration.

#### **Diagram**

We have also revised the *Diagram* element as regards usability during configuration and layout. Here you can now display other diagram types (e.g. time processes). Furthermore, you can now directly influence the colours displayed.

#### **VTL Include (Velocity)**

In Intrexx 5 VTL view elements that are already contained in the application can now also be referenced by a newly created VTL Include. In addition, you now have the option to create VTL pages directly in an application which are transferred to the server upon

publication. These VTL pages are also automatically integrated into the portal when an application is imported.

### Grouping

Groupings can now be chosen for different HTML elements (e.g. *Div*, *Table*, *Paragraph*, etc.) These HTML elements are then used in the page source code to present the grouping and content. This design option offers you the greatest possible flexibility both as regards the support of mobile devices as well as the design of barrier-free pages.

### Dynamic filters

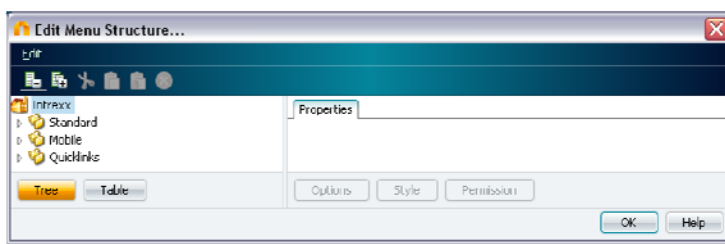
Dynamic filters are available to you with Intrexx 5 as separate controls with typical properties, such as the specification of the format of inputted values in the search fields. The filter controls can now be positioned individually and completely at will on the workspace.

A new addition is also the link with elements whose data should be filtered. In this way, you are now much more flexible when filtering data. The connection with the filter control is now controlled via the *Dependencies* tab in the properties dialogue box of the view control. This tab will already be familiar to you from version 4.5. The settings were set here for dependent selection lists.

We have fitted the following view elements with the *Dependencies* feature:

- Selection list
- List field
- View table
- Free layout table
- Research
- Diagram
- Calendar element

## Edit menu



This is where you specify the folder and application structure of a portal. In order to provide different menu structures according to the end device or layout, several menus can be created. Applications can now also be linked to several times within a menu. Links to certain pages of an application are also possible. Application entries can be deleted from a menu without having to delete the application itself.

Please note here that the *Link Integrator* module no longer exists. However, all existing entries are automatically adopted during an update process. Furthermore, additional links to applications that were recorded laboriously up to now using the *Link Integrator* are automatically reset to new application references.

## Processes

### **Conditions with several outputs**

A filtered condition now always has three outputs: Yes / No / Always

### **Data group event**

The handler for the data group event can now be used simultaneously for the 'insert' / 'change' / 'delete' actions and for 'notify'.

### **Copy process**

As with applications, a process can be opened as a copy of an already existing process.

### **Activate / deactivate processes**

Processes or individual elements of a process published on a server can be deactivated and reactivated.

### **Process elements**

An array of revamped and new elements are ready to be used in processes. These include diverse Groovy elements and new filter elements.

### **Optimised handling**

The cumbersome connecting of event handlers, actions and conditions has now been reduced to a minimum by the new interface. If elements are dragged over existing elements using the mouse, they are then automatically connected to each other.

### **Bird's eye**

You can now maintain an overview of labour-intensive processes that fill the screen by using the bird's eye view. This also has a navigation function and a zoom.

### **Search**

Certain elements can now be searched for within a process using various criteria (such as GUID, title, properties, description, etc.)

### **Logfile analysis**

The logfiles for a process can be viewed and analysed outside of Intrexx. Filter functions make searching for certain entries easier.

### **Additional information**

- Special e-mail properties such as priority
- Changelog
- and much more

## Users

### **Details**

All details can be displayed for every object selected in the *Users* module by pressing the appropriate button or using the tab.

### **Freely definable list view**

The columns of the user display can be freely selected in the list view. In this way, you can always display exactly the information that you require.

## Conducting research

You can now research any user management object via the contextual menu. All relevant information regarding groups, organigram and distribution lists is displayed for you here.

## Data transfer

*BizWalker* has been replaced in Intrexx 5 by a tool with a much greater scope of functionality: the *Data transfer* module. *Data transfer* can work on both the source and destination page with different data source modules.

These include

- Intrexx portals, both local and remote
- Databases equipped with JDBC drivers
- XML files
- Text files
- Groovy scripts

In this way, it is no longer just data that can be imported into or exported from Intrexx portals. Rather, it is now possible to combine these source and destination types at will. For example, data created with Groovy scripts can be transferred into SQL databases. The transfer of data from Intrexx portals into other portals is also possible of course.

The specific support of Groovy scripts as data sources means a significant expansion in the options available until now. For example, it is now possible with just a few lines of code to also import Excel data into Windows 64-Bit and Unix systems.

The data can also be transformed with Groovy scripts, i.e. enriched, for example, with additional information, or fields can be consolidated, calculated or have their data types changed.

## Portlets

Intrexx 5 offers you various new portlets:

### Word cloud menu

The word cloud menu is a 'self-configuring menu'. Here, the users' clicks on individual applications are counted and the links are accordingly displayed larger or smaller in the portlet. The portlet can be configured using the following settings:

- Only display my links (only the current user's clicks are evaluated).
- Only the anonymous user's links are displayed.
- Only logged-in users' links are displayed.
- All links that have been clicked on are displayed.

### My Favourites and Keyhole My Favourites

In the *My Favourites* portlet you can have both your favourite applications and a keyhole page displayed.

To this end, create a view page at the top level of the application in the *Applications* module. You can now position elements on this page. Right-click on the page and select *Keyhole My Favourites* from the contextual menu. The content of this page is now displayed on the right next to the name of the application in the portlet.

Please take care here when creating this that, where possible, only one-line content is displayed on the page, in order not to impair the look of the portlet and its ease-of-use as a result.

### ***IMenu and Keyhole IMenu***

The *IMenu* portlet offers the user a navigation similar to the design which has now become common on mobile devices such as the iPhone. The hierarchy levels are nested here from 'top to bottom'.

The display of a 'keyhole' page can be realised as follows in the *Applications* module: create a view page at the top level in the application's structure view. Elements (links, filtered free tables, etc.) can be positioned on this page. Right-click on the page and select the *Keyhole IMenu.contextual* menu. The content of this page is now displayed on the right next to the name of the application within the portlet.

Please take care here when creating this that, where possible, only one-line content is displayed on the page, in order not to impair the look of the portlet and its ease-of-use as a result.

### **Portlet – style settings**

Individual portlets can now be assigned their own style classes in portlet configuration. In this way, individual design possibilities for a portal are again expanded.

## Tools

### **Task planning**

Time-controlled processes can be clearly identified by the display of the *Process name* and *Name of timer*.

### **Form and request values**

An overview of created form and request values can be found under this menu item. Properties such as behaviour mode, area of validity and multi-lingual error messages can be specified for these values.

This creates the option for you to maintain 'variable whitelists'. In this way, you can check every value saved on your server and, as a result, immensely improve the security of your system.

## Other new properties

### **Using an existing database for a new portal**

An existing, empty database not created by Intrexx can now also be used with all database types for a new portal.

## Appendix – What is no longer supported?

### **HSQL database**

The HSQL database was delivered with Intrexx up to now for demo and test purposes. However, as it often did not run in the stable fashion that we would expect from a database, we have replaced the HSQL database with an Apache Derby database.

In order to be able to update an existing portal with HSQL, please follow the procedure below:

- Export the portal
- Perform the software update
- Re-import the portal

### **WSRP**

Our customer surveys and feedback from forums showed that WSRP integration was barely used or was only used on an experimental basis. This is also confirmed by current research from renowned polling organisations. For this reason, we have discontinued WSRP support with Intrexx 5.

### **Internet Explorer 6.0 – special adjustments**

Microsoft Internet Explorer 6.0 behaves like a racing car from the 1960s trying to compete in a Formula 1 race – it may be a racing car, but it simply cannot keep pace with the acceleration, top speeds and handling characteristics of modern vehicles, even though it runs on the same fuel.

However, as we know that a certain number of companies are tied to these old browsers due to existing applications, and as changing to a more secure and faster browser can be difficult in part, we will continue to maintain support at the moment in this regard.

However, the specific properties of Internet Explorer 6.0 can lead in individual cases to a function not being able to be implemented in a completely optimal manner. Likewise, not all new options in the *Designer* can always be used in exactly the same way in Internet Explorer 6.0.