

Intrex Professional

Intrex Compact

RELEASE 5



Portals

Contents


1. The Areas of the Portals Module	4
1.1. Best of Application Store.....	4
2. Register and Change Intrexx Server	5
3. Creating a New Portal	5
3.1. Portal Template	6
3.2. Data Base Server.....	6
3.3. Summary.....	7
3.3.1. General Entries	7
3.3.2. Portal Template.....	8
3.3.3. Web Server.....	8
3.3.4. Database.....	9
3.4. Opening the Portal.....	11
4. Main Menu	12
4.1. File Menu	12
4.2. Portal Menu	13
4.2.1. Import Portal	13
4.2.2. Export Portal.....	14
4.2.3. Portal Properties	15
a) Webservice	15
b) Ports	15
c) Proxies	16
d) Start Parameters	17
e) Options.....	17
f) Database.....	18
4.2.4. Refresh.....	18
4.3. Extras Menu	18
4.3.1. License Manager	19
a) Licensing Portals.....	21
b) Licensing Templates and Adapters	21
c) Licensing Applications.....	21
4.3.2. Software Updates	23
a) Starting the Update	24
b) Connection Settings	24
c) Update Settings.....	25
d) Installing the Update	25
4.3.3. Options.....	26
4.4. Help Menu	26



Copyright






This document is in all its parts protected by copyright. All rights are reserved, especially the right of translation, presentation, reproduction, and duplication. Regardless of the accuracy of the text, images, and programs neither author, publisher or translator may take judicial or other responsibility for possible errors and their consequences.

The conventional names, trade names, product designations, etc. reproduced in this work may, even without special designation, be trademarks, and as such may be subject to legal regulations.



Writing Conventions

In this handbook, text passages will be displayed in *italics* when they refer to settings in the displayed dialogs. Menu items that are available in context menus can, in addition, always be selected from the main menu. Main menu items will not be described if they are not available in the context menu. A description of the general main menu items can be found in the  *Portals* handbook. Programming code in the text will be displayed in the `Courier` font. Context menus can be opened by clicking with the right mouse button on the described element.

In the following, `<intrexx>` refers to your Intrexx installation path; under Windows, for example, this is usually  `c:\intrexx\`. On Linux, the normal install path is  `/opt/intrexx/`. The following symbols will be used for designation of special kinds of information:

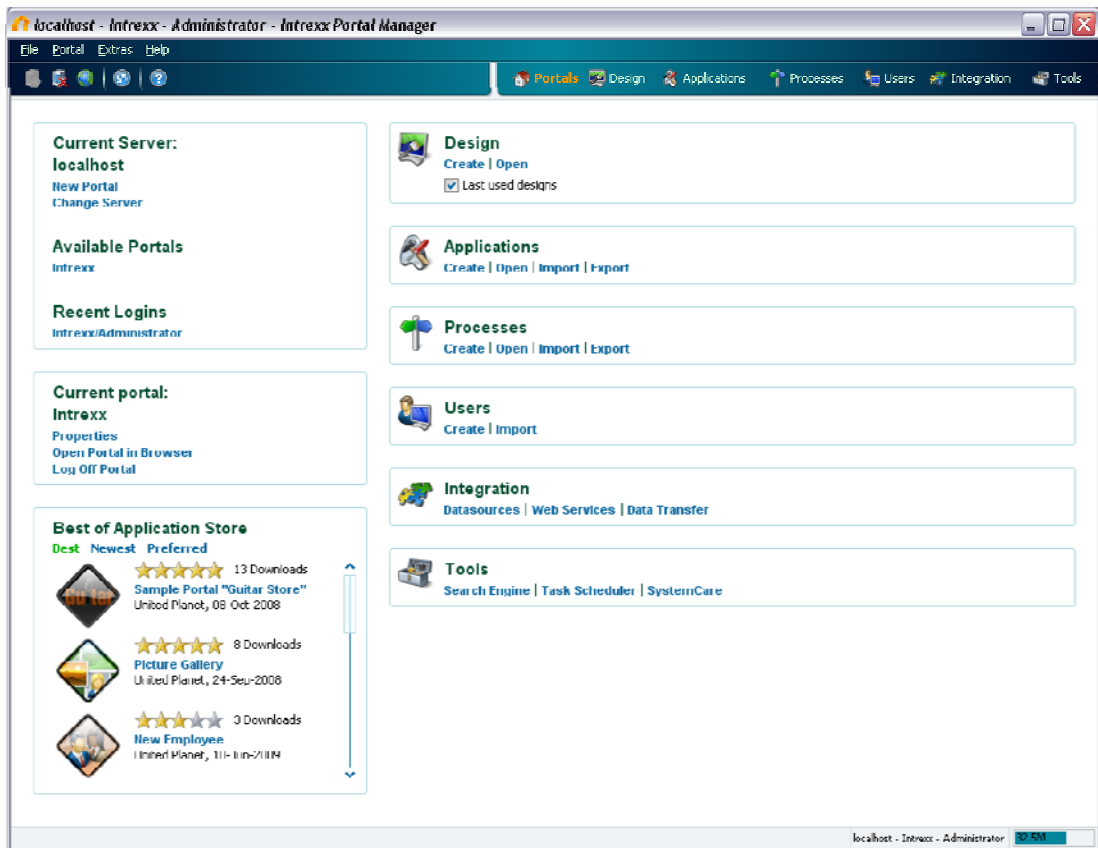
-  Information
-  References to an Intrexx handbook
-  Directories
-  URLs
-  Click on buttons

Background Knowledge

In order to understand this documentation, no special knowledge is required. You can find helpful information in the Intrexx handbooks  *Setup* and  *Start*.

1. The Areas of the Portals Module

If you start the Portal Manager, you will automatically start in the area *Portals*.



In the *Current Server* area, the current server connection will be shown. With *New Portal*, a new portal can be created. *Change Server* allows a connection to a different portal server to be created.

In the *Available Portals* area, all portals located on the currently connected server can be opened. Please log onto a newly created portal with the user name *Administrator*, leaving the password field blank.

In the *Recent Logins* area, the users that were last logged in, as well as the portals on which they exist will be listed.

In the *Current Portal* area, the portal you currently edit in the Portal Manager can be opened in the browser. The properties and the possibility to log off are accessible here directly.

In the right-hand area, you will find quick links to important functions in the other modules.

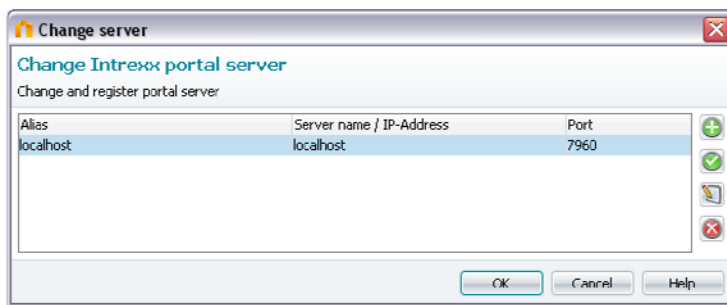
1.1. Best of Application Store

In this area you will find the current offer from the [Intrexx Application Store](#). If you click on one of the Apps, you will be taken directly to the Store. The list of applications can be sorted by *Best* (most frequently sold), *Newest* (most recently placed in the store), and *Most*

popular (those with the best evaluations). Information on the settings in this area can be found in the chapter *Extras Menu / Options*.

2. Register and Change Intrexx Server

If you are working directly on the Intrexx Portal Server, after installing the Portal Manager, the *localhost* will automatically be entered to the list of current servers. If the Portal Manager is installed on a client, the server must first be registered. To do this, click the link to *Change Server*.



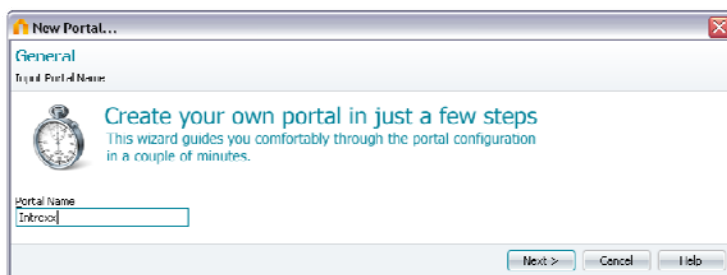
Click on *Add Server* if a server has to be registered. Existing server connections can be tested by clicking *Test Connection*. *Remove Server* will remove a server from the list. With *Edit* you can assign an *Alias* to the server, or edit the *Server Name* and *IP Address*. To do so, highlight the entry that you wish to edit, in the corresponding column.


In the column *Server name / IP-address* enter the server name or the server address. The system on which the Intrexx Portal Server is installed can be entered by name or by its IP address (such as *10.10.10.10*). The setting for *Administration port* will be set automatically and can in most cases be used without problems.

If no connection to the server can be created, please ensure that the computer to which the Intrexx Portal Server has been installed is operational. Additional possible causes are problems with the network connection, a missing installation of TCP/IP, or a defective network cable. The *Intrexx Supervisor* service must also be started on the portal server. Please also check whether the administrator of the server has chosen a different administration port manually.

3. Creating a New Portal

In order to create a new portal, please click on *New Portal*. In the *Portal Name* field, enter a name of your choice for the portal.

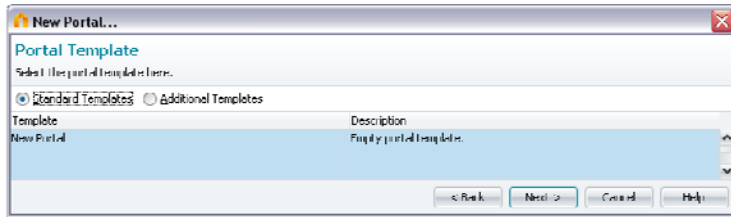


All files and folders belonging to the new portal will be contained in their own subfolder under the  <intrexx>\org directory. When you enter the portal name, the name will be automatically applied as the name for the subdirectory.


3.1. Portal Template

Default Template

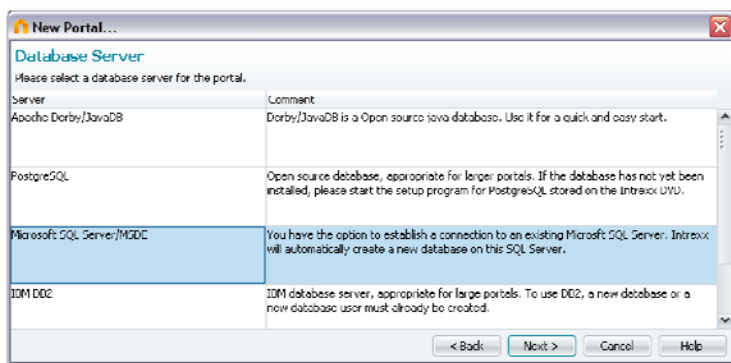
In the following dialog, select a portal template. In the delivery package of Intrexx, the portal templates *New Portal*, *Enterprise english*, *Enterprise german*, *Compact english* and *Compact german* have been included. The Enterprise and Compact templates contain sample applications and data.




Other Templates

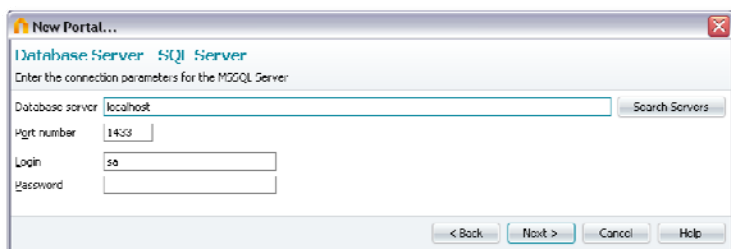
All informations on this option can be found in the chapter *Import Portals*. If the desired template is selected, please click  *Next*.

3.2. Data Base Server




Various data base types can be selected here. If no drivers are available for a database server, you will be notified of this with a message, if you click  *Next*. Drivers that are not yet installed can be included if you run the setup once again.

The following dialogs, which you will use to set up the connection to the database server, will vary depending on the database types. For information on other database connections, please consult the in-program help files of Intrexx.

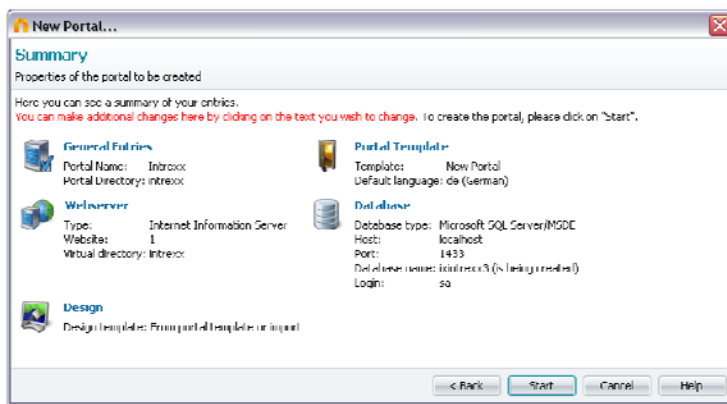


Enter the name of the data base server here. The *Port Number* will be identified and entered by Intrexx. It can also be changed here. Enter the username in *Login* and a password for access to the database server (Apache default: login - *derby*, password - *derby*).

In the lower area you can either *create a new data base* or *use an existing data base* for your portal.

The *Database Name* will be automatically created by Intrexx using the portal name prefaced by the letters *ix*. You can change the database name if you wish. If the entries are complete, please click  *Next*.

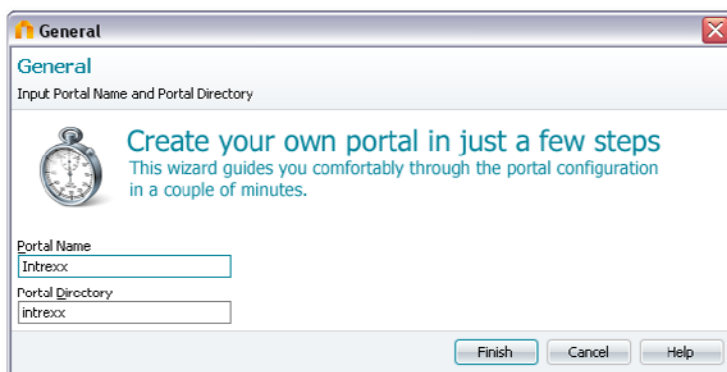
3.3. Summary



In the summary, there is an overview of the properties of the new portal, where you have the ability to make changes to the individual components. To do so, click on the corresponding text.

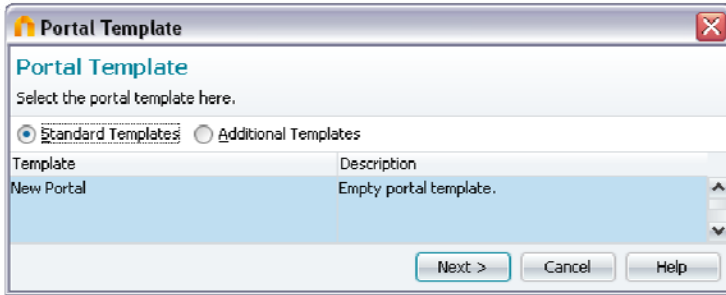
3.3.1. General Entries

The *Portal Name* and *Portal Directory* can be changed in this area.



3.3.2. Portal Template

You can change the portal template here.

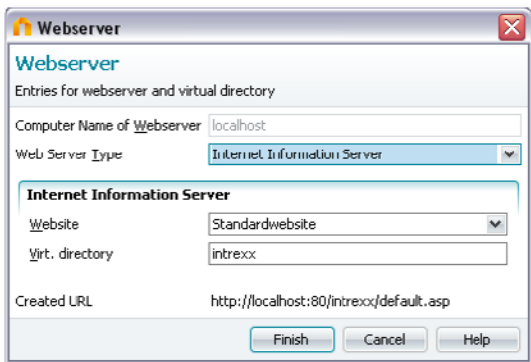


Click  *Next*.



Select the desired default language setting for the portal. This setting can be changed later at any time via the *Portal Settings* in the menu item *Extras*.

3.3.3. Web Server



In this dialog, the settings for the webserver will be defined. Under *Webserver*, the current, local computer name *localhost* will be entered as default. Change this entry if the webserver will be located on a different computer system. Then select the desired webserver type in the *Webserver Type* list.

If you are using Tomcat Standalone, enter the desired host under *Virt. Host*. If using Internet Information Server, select the desired *Website*. Multiple websites can be created on a single Internet Information Server (so-called virtual servers, each possessing its own IP address). You can usually select the default website here. Additional websites that you have created will be also entered to the selection list and can be selected.

When using Tomcat Standalone, please enter the desired *Context*. When using Internet Information Server, the *Virtual directory* of the webserver can be changed here. Each website can publish contents from multiple directories. The directories can either be accessed from a local drive or over the network. A website can possess a base directory and any number of additional published directories. These published directories will be called *Virtual directories*.

To simplify URL addresses, the services will display all published directories for clients as a single directory structure. The base directory is the root directory of this virtual directory structure, and every virtual directory will be addressed as a subdirectory of the base directory. The actual subdirectories will naturally be available to clients in the same way.

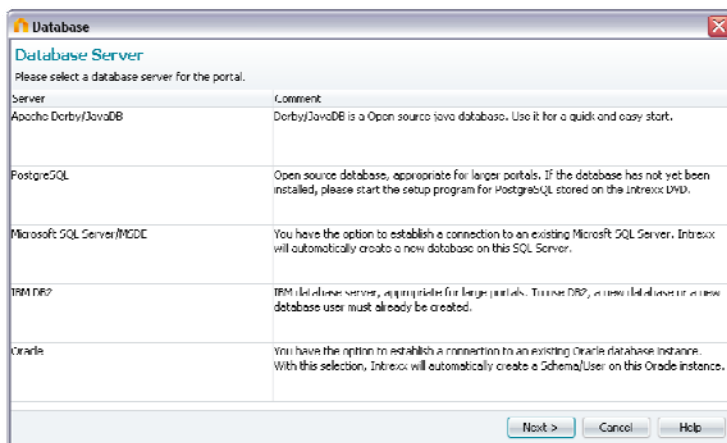
i Normally, the webserver and the Intrexx Portal Server are installed on one computer. In this case, the address *http://localhost/<portal>* is used as a preset. In other cases, such as when sending eMails, in which links or buttons are defined in the portal as jump targets, an address must be used that has universal validity. For this, enter the internet address of the computer on which the Intrexx Portal Server has been installed into the *Base URL* field.

(*http://servername/<portal>/* or *http://IP/portalname/*).

If a virtual directory with the selected name already exists, the name in the dialog will be shown in red. In this case, please choose a different name. The *Created URL*, under which the new portal will be available, will be shown in the dialog under the selection lists.

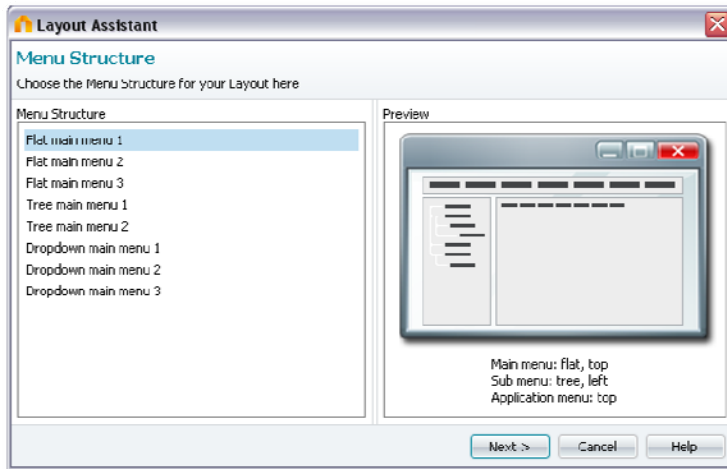
3.3.4. Database

The type of portal database can be changed here.

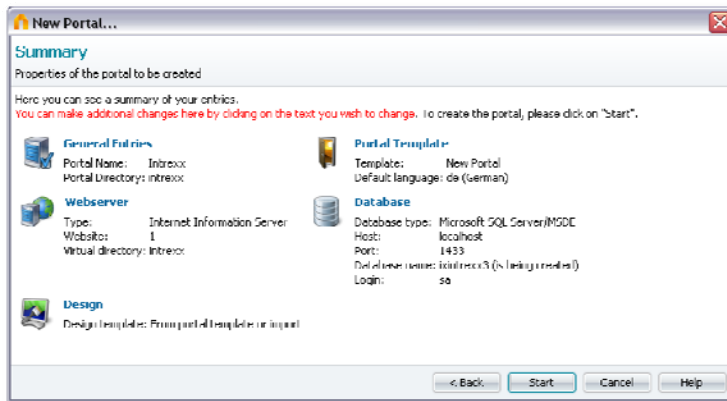


Design Template

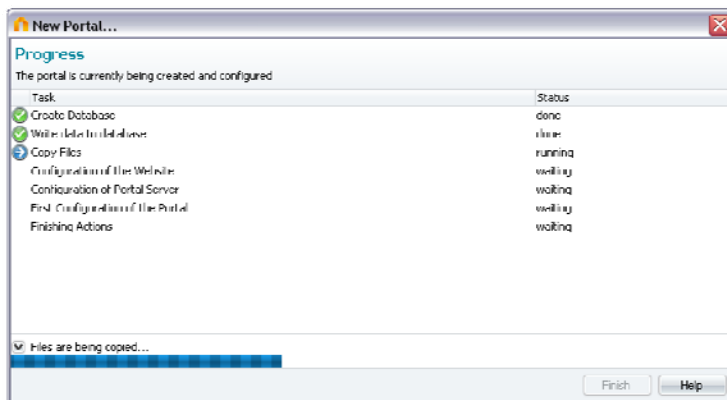
A different design template can be assigned to the portal here.



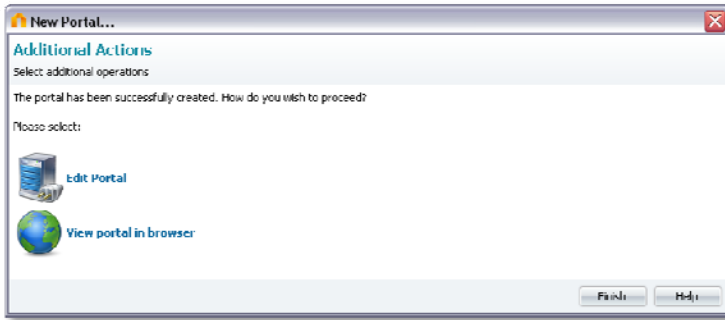
You can find more information on this topic in the handbook on [Design](#).




Click [Start](#) here. The new portal will be created with the settings you have chosen.



You will be informed of the progress of the portal's creation here.

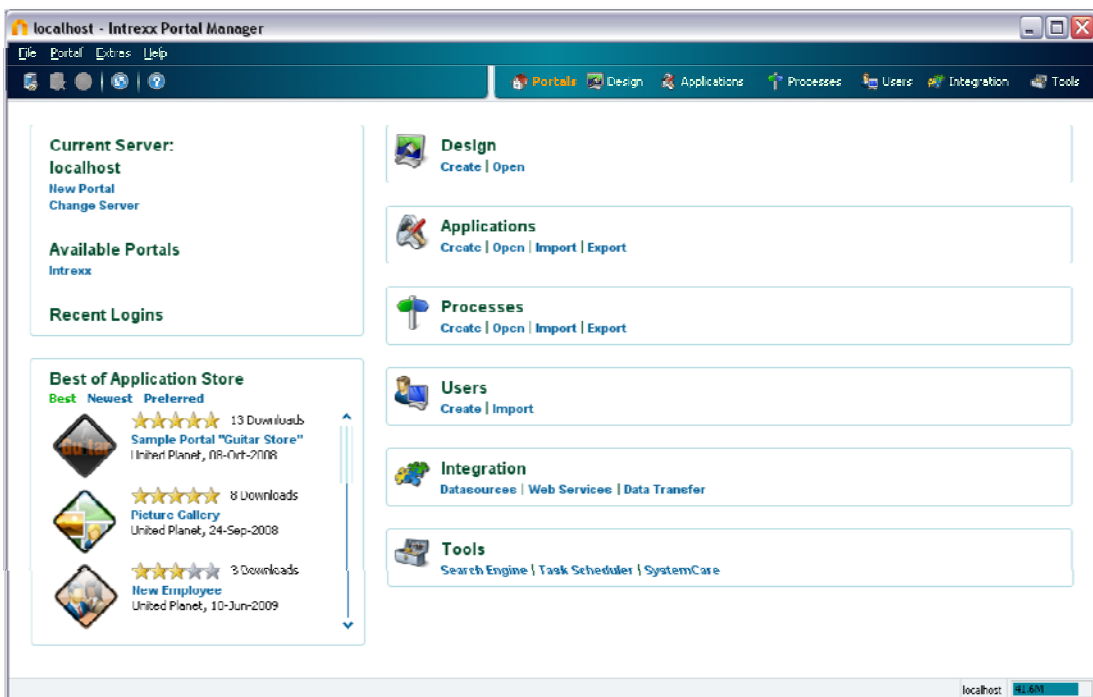


After the portal creation is complete, you have here the ability to immediately enter into editing the portal in the Portal Manager by clicking the link to *Edit portal*. You will then be automatically logged onto the portal as administrator. Additionally, you can open your new portal in the browser.

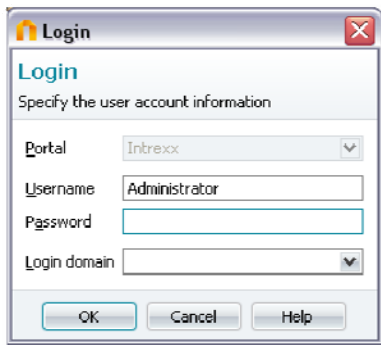
Click on  *Finish* in order to close the dialog and return to your newly created portal in the Portal Manager.

3.4. Opening the Portal


The new portal has now been entered into the *Available Portals* area.




Clicking on this link will open it for editing.



Enter your *user name*, *password*, and the *domain* in which you wish to log in. Please log onto a newly created portal with the user name *Administrator*, leaving the password field blank.

-  With the button combination *Alt + period* in the *User Name* field, the user name *Administrator* will automatically be used for login to the Portal Manager and for login in the browser. For security reasons, this user should be assigned a password.

You can inform yourself about administrator permissions in the  *Permissions* handbook.

4. Main Menu

4.1. File Menu

Connect Portal Server

This menu item opens the dialog to log in to a portal.

Disconnect Portal Server

This menu item will log off an opened portal. You will be notified of unsaved changes with a message.

Open Portal in Browser

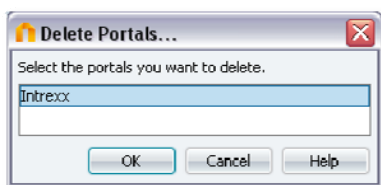
The currently connected portal will be loaded in the browser.


New Portal

A new portal will be created.

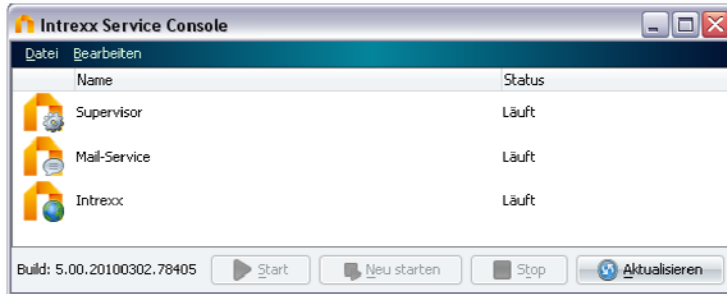
Delete Portals

With this menu item, portals can be deleted.



Select the portal and confirm with  *OK*. The portal database can not be deleted by Intrexx. If you no longer require the database, please delete it manually using its corresponding database manager.

Apache Derby databases that were created along with a new or ported Intrexx Portal can be found in the directory `intrexx\derby\database`. If you wish to manually delete an Apache database here, you must first stop the Derby Database Server via the *Intrexx Service Console* (see handbook *Setup*). If you are sure that you no longer require this data, you can then delete the database directory underneath the *database* folder.



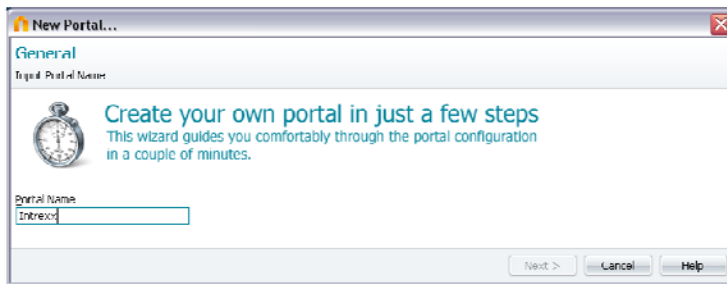
Close

Shut down the Portal Manager.

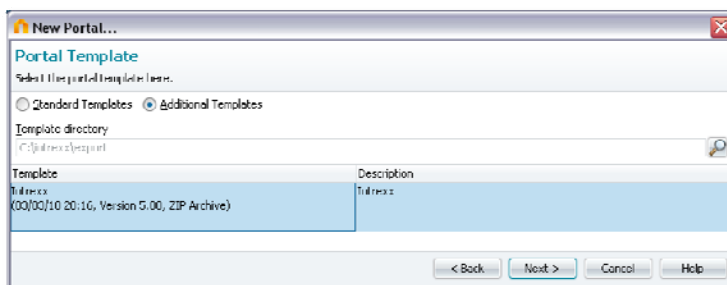
4.2. Portal Menu

4.2.1. Import Portal

Clicking on this menu item will open the following dialog.



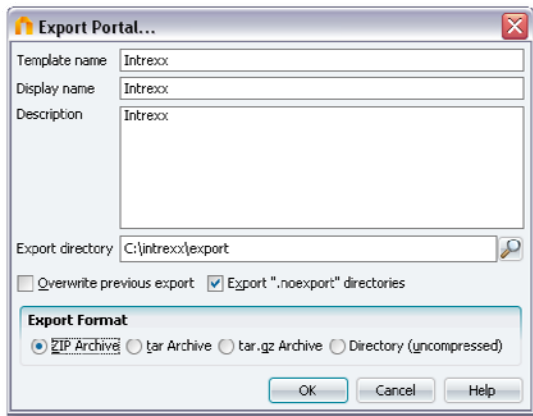
Enter a unique name for the portal and click *Next*.




If you wish to import a portal, please select the option *Other Templates* here. In the lower area, select the *Template Directory* in which the portal export can be found. All portal exports that are located in this directory will be listed. Select the desired portal in the list. To continue, click *Next*. Information on additional procedures can be found in the chapter [Creating a New Portal](#).

4.2.2. Export Portal


With this menu item, complete portals with their databases can be exported. To do this, you must be logged onto the portal and possess the appropriate access permissions.



Enter an *Export Name* (file name for the export file). The *Template Name* will be shown in the templates list when importing the portal. You can enter a short *Description* for the portal. Using the  button and select the directory in which the export will be saved.

The setting to *Overwrite previous export* allows the most recent previous export to be overwritten by the new export. Two *Export formats* are available: the portal can be exported as a ZIP file or as an uncompressed directory.

Individual directories can be excluded from the export by creating a file in the directory with the name *.noexport*. Directories that have been excluded in this way from the export will be exported anyway if the setting to *Export .noexport directories* has been selected.

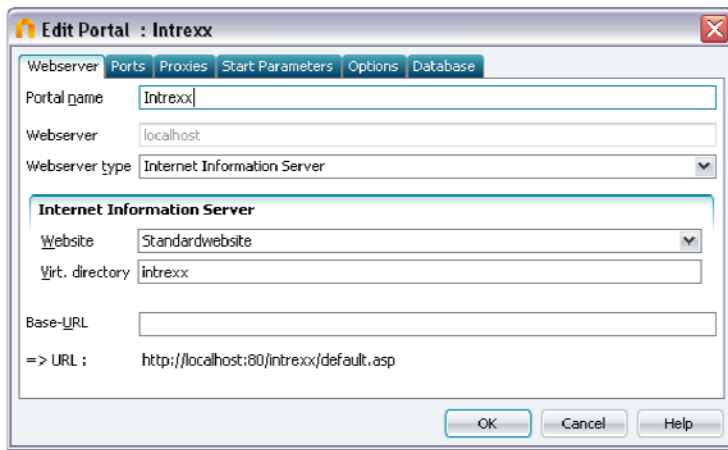
By clicking  *OK*, the export will be started.

A portal export contains all applications, as well as data, layouts, users, and all processes in the portal.

4.2.3. Portal Properties

In the menü *Portal/ Portal Properties* you have direct access to the properties of the portal currently open.

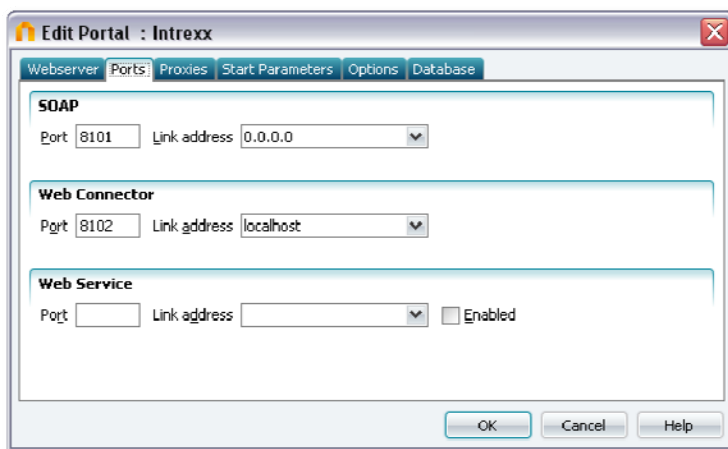
a) Webserver



The screenshot shows the 'Edit Portal : Intrexx' dialog box with the 'Webserver' tab selected. The 'Portal name' field contains 'Intrexx'. The 'Webserver' field contains 'localhost'. The 'Webserver type' dropdown is set to 'Internet Information Server'. Below this, the 'Internet Information Server' section is expanded, showing 'Website' as 'Standardwebsite', 'Virt. directory' as 'intrexx', and 'Base-URL' as an empty field. The resulting URL is displayed as '=> URL : http://localhost:80/intrexx/default.asp'. At the bottom, there are 'OK', 'Cancel', and 'Help' buttons.

You can find a description of webserver properties in the [Creating a New Portal](#) chapter.

b) Ports



The screenshot shows the 'Edit Portal : Intrexx' dialog box with the 'Ports' tab selected. The 'SOAP' section has 'Port' set to 8101 and 'Link address' set to 0.0.0.0. The 'Web Connector' section has 'Port' set to 8102 and 'Link address' set to localhost. The 'Web Service' section has an empty 'Port' field, an empty 'Link address' field, and an unchecked 'Enabled' checkbox. At the bottom, there are 'OK', 'Cancel', and 'Help' buttons.

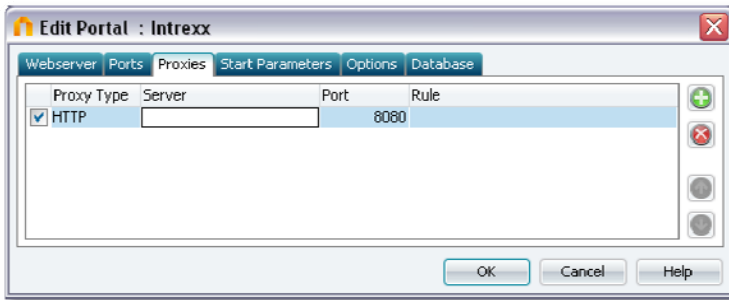
Communication between the Portal Manager and the corresponding portal on the portal server occurs via the *SOAP Port*. This setting must only be changed if the port in question is already in use. Usually, you can assume that the suggested port is available.



Communication between the web server and the corresponding portal occurs via the *Web Connector Port*. This setting must only be changed if the port is already in use. As a rule, you can assume here as well that the suggested port is available.

The port and interface address for *Web Services* must be entered for Intrexx Web Services to be used. The *Active* setting will enable these Intrexx Web Services.

All interface addresses can either be entered as an IP or a server name. Additional information on this topic can be found in the [Tools](#) and [Applications](#) handbooks.

c) Proxies









-  *Add Proxy* adds an additional proxy to the list.
-  *Delete* removes the highlighted entry from the list.

For newstickers and WSRP portlets to access the internet, a proxy must be activated. Clicking in the first column will activate or deactivate a proxy. For all additional functions of Intrexx, a proxy must only be activated if, on your network, access to the internet is controlled via a proxy server and/or no direct connection to the internet is possible. The setting refers always to the path from the portal server.

Select the *Proxy Type* in the second column. In the third column, enter the server name or the IP address. The port must only be changed if port 8080 is already in use.

In the *Rule* column, a rule can be entered for the connection. Please note that certain characters possess special meaning in regular expressions, especially the characters `.*+`. These characters must be protected by a backslash prefixing them, which serves as an escape character, although this is not always necessary for the period, which stands for an arbitrary character, i.e. including the period itself. `*` serves as a wildcard for an arbitrary character string (period followed by a star).

Example:

1.  `http://server\\.tec\\.example\\.com:4444/services.*`
accepts exactly the URLs that begin with
 `http:// server.tec.expample.com:4444/services.`
2.  `http:// server.tec.expample.com:4444/services.*`
accepts exactly the URLs that begin with
 `http:// server.tec.expample.com:4444/services.`
3.  `http://.*services/.*_` accepts exactly the URLs that begin with
 `http://` and contain `/services/`.

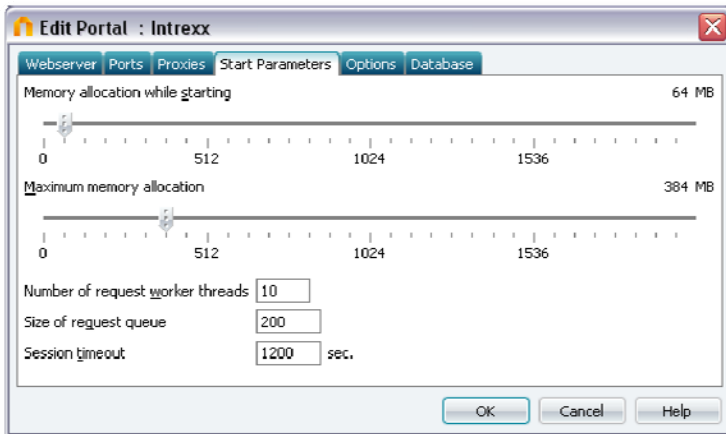
For URI syntax, see also [2]:

```
reserved = ";" | "/" | "?" | ":" | "@" | "&" | "=" | "+" | "$" | ","  
mark = "-" | "_" | "." | "!" | "~" | "*" | "" | "(" | ")"
```


[1] <http://java.sun.com/javase/6/docs/api/java/util/regex/Pattern.html>

[2] <http://www.faqs.org/rfcs/rfc2396.html>

d) Start Parameters

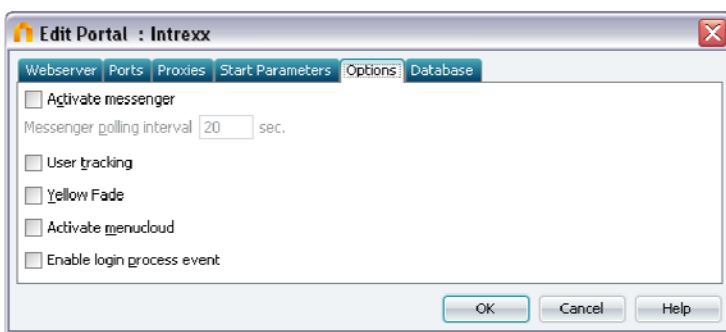


Here you have the ability to define start parameters, which will optimize the performance of the portal. With the sliding bars, you will set how much memory space the portal will be assigned at start and how much it can use as maximum.


 Please note that Windows systems can only assign a maximum of 2,048 MB of memory. For Intrexx installations to 64 bit systems, please increase the *Maximum Memory Allocation* to at least 384 MB.

Under *Number of request worker threads*, define how many worker threads will be prepared for the handling of queries and responses at the server side. A worker thread will become active as soon as a request has been placed in the queue. *Size of request queue* allows you to define the number of requests that can be placed in the request queue. The preset values can usually be used here. Under *Session timeout*, enter the number of seconds after which an inactive session will be automatically closed.

e) Options

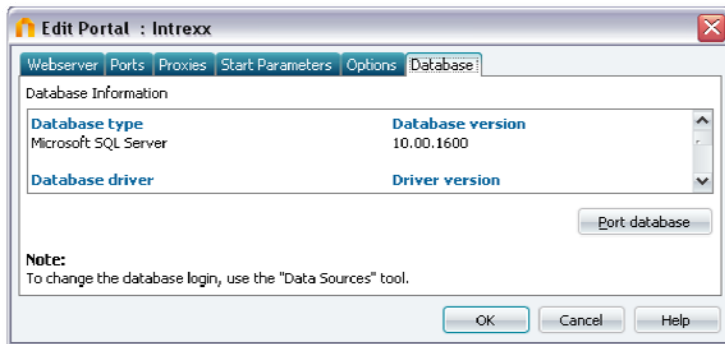


The setting to *Activate Messenger* activates or deactivates the chat feature in the portal. Under *Messenger polling interval* you will define the number of seconds, after which time intervals the server will be queried for new messages. *User tracking* turns on user-specific tracking in the *Statistics* system application. *Yellow fade* emphasizes, using a partial refresh (Ajax), changes to pages for a short time in yellow.

The setting to *Activate menucloud* determines if clicks on menu items will be logged ( *Portlets*).

Enable login process event has the effect of sending the login of a user in the form of a server event, which can be evaluated in the *Processes* module with a Groovy events handler (🔧 *Processes*).

f) Database



In the portal properties, on the *Database* tab, you will be informed of the database type, the database version, the current driver, the driver version, the database name, and the user name that is used to access the database.

By clicking 🔄 *Port Database*, the portal database can be changed, such as from a test database to a different database type. The current database will first be exported by Intrexx. Next, the new database will be created and all data transferred to it. Information on the possible settings for the following dialogs can be found in the [Creating a New Portal](#) chapter.

After porting, click 🔄 *OK*. The portal is now connected to the newly created database. All entries will be immediately entered to this database.

4.2.4. Refresh

With this menu item, the list of existing portals will be refreshed.

4.3. Extras Menu

Portal Settings

Information on country settings can be found in the 🔄 *Multilingual Portals* handbook.

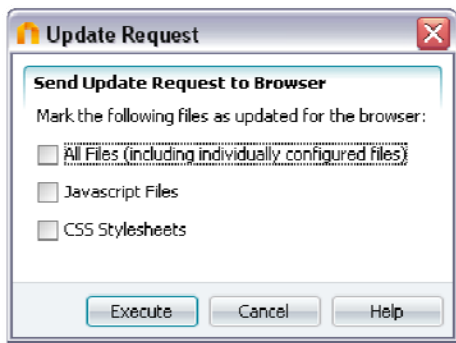
Create GUID

With the menu *Create GUID* a GUID will be created and copied to the clipboard.

Edit Menu Structure

The menu opens a dialog in which you can structure the portal menu and define the rights for access to menu items. You can find additional information in the 🔄 *Design* handbook.

Send Update Request to Browser



When loading pages on the web, browsers save information from an Intrexx portal. This data especially includes Javascript files, cascading stylesheets, and images. Saving this information is very helpful, as it increases performance in web browsers – above all with mobile end devices.

The Intrexx cache control controls the browser and defines when certain files should be reloaded. In this place you can explicitly tell browsers to reload the files for individual areas of the page. This may be useful if you, for example, have written and changed individual Javascript files.

Portal Permissions

The permissions to administrate the portal and the portal page, as well as the permissions to individual modules and the messenger will be controlled here. Detailed information can be found in the [Permissions handbook](#).

Change Portal Server

The portal server can be changed here.

Administrate Administration Logins

Everything on the topic of administration logins can be found in the [Permissions handbook](#).


4.3.1. License Manager

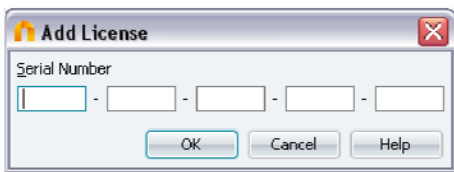
With the *License Manager*, the licenses you have purchased can be distributed to individual portals. You can reach the License Manager from the menu *Extras / License Manager*.




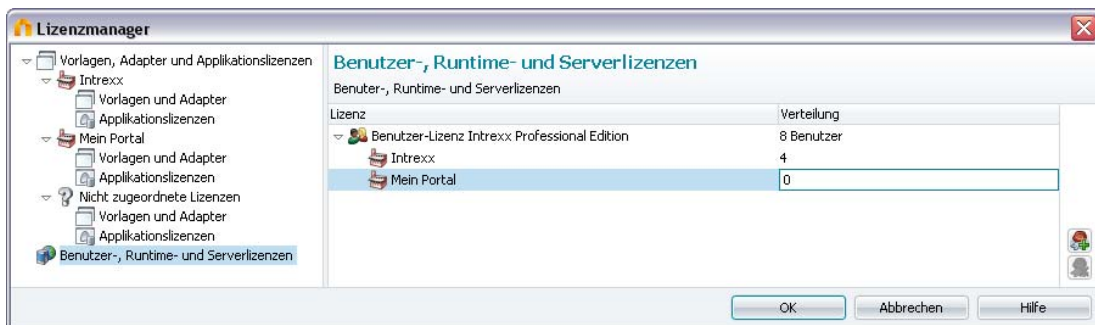
Click on the arrow symbol to the left of *Template, Adapter and Application Licenses* in order to show the subordinate categories.




If you want to register new licenses, please click in the lower right of the dialog on  *Enter new license*, or select *Enter license* from the context menu.




Enter the serial number here and then click  *OK*.



The successful licensing will be shown in the right-hand area of the dialog. Licenses must not necessarily be immediately assigned. You can also enter your licenses to the *Licenses not assigned* area and later, via drag & drop or via the context menu, distribute them to portals, templates and adapters, or applications. Clicking on  *Remove license* removes an existing license.

User, Runtime and Server licenses can be allocated to the several portals, if you enter the desired amount after a double click in the column *Allocation*.

-  Please note that modifications will take a few minutes to take effect or require a re-start of the portal server.

a) Licensing Portals

Intrex may be purchased as the Professional Edition or as Compact Edition. Both of these versions differ in the range of their abilities. You can inform yourself about the various qualities of these versions at www.intrex.com.

You require a license appropriate for your needs for each portal. By assigning a portal license in the License Manager, you will decide whether your server runs in Professional or Compact mode, depending on for which edition you have purchased a license.

Portal licenses exist in the following versions:

- **Intrex Professional Server License**
(unlimited users and applications)
- **Intrex Professional User License**
(5, 10, 25, 50, 100 or 250 users)
- **Intrex Professional Runtime License**
(one application for any number of users)
- **Intrex Compact (max. 25 users)**

Portal licenses for Intrex Professional of the same type and Intrex Compact licenses are cumulative within a portal server. This means that if you purchase a 10 user license and later an additional 5 user license, for example, in total 15 users are licensed to use this portal. In a Compact portal, a maximum of 25 users may be licensed. Please note within a portal server a mix of Compact or Professional licenses is not allowed.

b) Licensing Templates and Adapters

Here you can license the templates that require one (CRM, CMS, Shop, Project Management, eProcurement) and the adapters (Office Integration, Lotus, etc.). Template licenses can be purchased as a Professional or a Compact license for this. Adapter licenses for Lotus Notes or SAP Business Suite can only be implemented in Intrex Professional.

Template and adapter licenses that you have purchased for Intrex Compact will be not taken into account for a portal with a Professional server license.

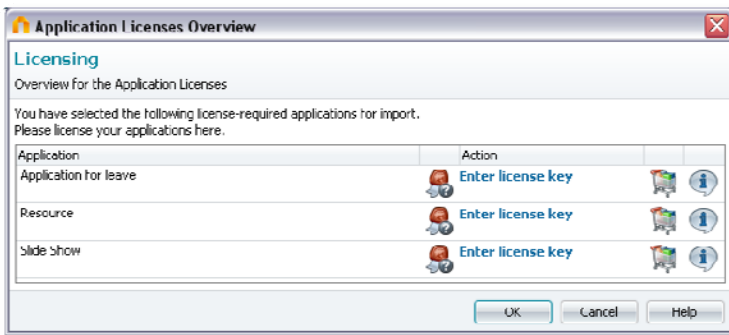
c) Licensing Applications


Application licenses can also be purchased either for Intrex Professional or Compact Edition. With these licenses, you can release non-free applications from the Intrex Application Store for your portal.

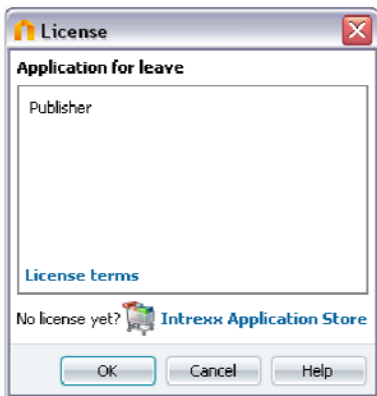
Applications requiring a license will be released when they are imported in the *Applications* module. The application licenses will be shown in the license manager afterwards. They can be allocated to other portals there, but not entered like portal or adapter licenses directly. If you import an application requiring a license a dialog where you can enter the license key will be shown.



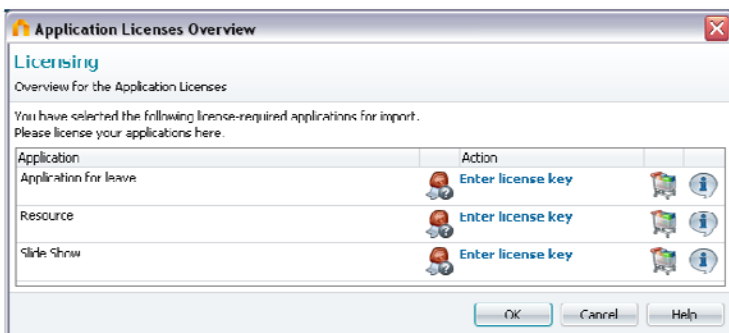
Enter your license key here. If multiple applications requiring licenses are contained in your import package, an overview will be shown afterwards.



By clicking on  *License information*, you can inform yourself about the publisher and notes regarding the license.



Click  OK here.



The second column informs you of the licensing status of the individual applications with the following icons:



A valid license key exists for this portal.



There exists a valid key in the License Manager that at the moment has not been assigned to a portal.



No valid key exists.



A key is available in the portal that does not fulfill the requirements, because the portal is one for the Professional version, while the key is for a Compact portal.

By clicking on the link to *Enter license key*, the application may be licensed.

If you possess administrative rights (*Extras / Administration Logins* in the menu) to the portal server and a valid key exists in the License Manager that has not yet been assigned to a portal, you will be asked whether you wish to use this key. If you wish, the key will be automatically assigned to the current portal.

If you do not have administrative rights to the portal server, the dialog to enter a new license key will open.

4.3.2. Software Updates

When you start the Intrexx Portal Manager, you will automatically be offered the option to update your software. By updating your software, your version of Intrexx will have access to current advances at all times. The update packets will be made available on the United Planet update server. The software update can be set up in such a way that upon each start of the Portal Manager, it will automatically check for appropriate updates to your system.

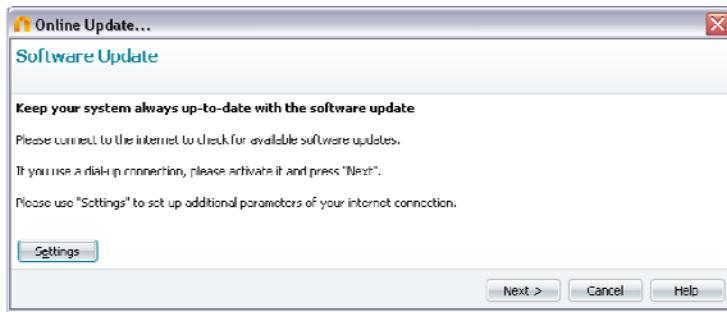
There are three ways to update your version of Intrexx:


- Update of the portal server and Portal Manager on the server system
- Pure portal server update on the server system
- Pure Portal Manager update (this variant can be executed directly from a client for the Portal Manager installed on the system).

An update of the portal server must always be run before the Portal Manager can be updated. Please start the Portal Manager installed on the server system in order to update the portal server.

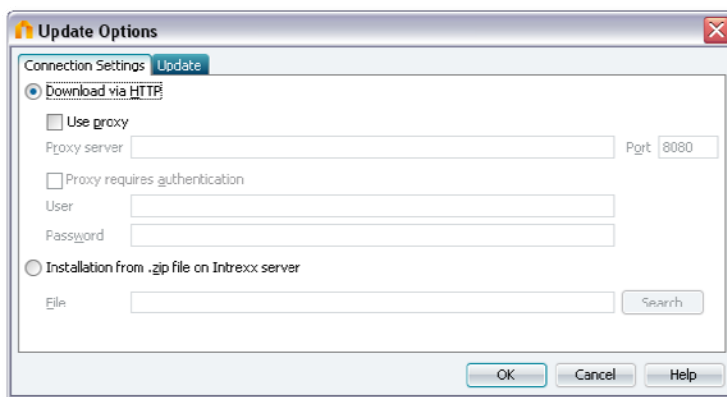
a) Starting the Update

The software update can be started at any time via the main menu item *Extras / Online Update*.





If no connection to the internet exists, please create one. Click  *Settings* to open an additional dialog, in which access to the internet can be configured and update settings can be changed.

b) Connection Settings



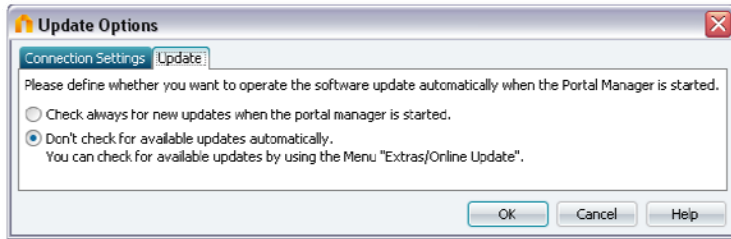
With the setting *Download via HTTP*, the client will access the United Planet Update Server and automatically download the updates available there. If you use a proxy to connect to the internet, you can enter the correct settings to do so by activating *Use Proxy*. Enter the IP address of the proxy server in the *Proxy Server* field. The default setting for the port is 8080. If authentication is required, please click *Proxy requires Authentication* and enter a user name and password.

The setting *Install from ZIP file* allows updates can to be downloaded in the form of a ZIP file.

-  Please note that, as opposed to updating via HTTP, all available updates will always be contained in the ZIP file. Only choose this option if updating the software via HTTP is not possible. You can find the current ZIP file for your version of Intrexx on the United Planet serviceportal  [Intrexx Live!](#).


c) Update Settings


By clicking the *Update* tab, the settings for software updates will be opened.



With the setting *Check for updates upon starting the Portal Manager*, you can set the Portal Manager to notify you automatically of newly available updates when the Portal Manager is started.

If you prefer to initiate updates manually, you will select the option *Don't check for new updates automatically*. You can reach the software update at any time from the *Extras* menu.

If the settings for access to the internet and updates are complete, please click  *OK*.


If a connection to the internet has been created, in the following windows you will be shown a list of the updates that have already been installed to your server and/or client. In a list of available updates, you will be informed of the available update packages. You can display the description of an update component by clicking on a component in the list. By clicking  *Next*, the download will start. The update package will be sent to the currently connected portal server.

d) Installing the Update


The update will, if it is run on the system on which the portal server is installed, be accomplished for the Portal Manager and the portal server at the same time.

If the software update is run from a Portal Manager on a client, the currently connected portal server will not be updated. The update packages will only be transferred to the portal server system. In this case, a message will appear, notifying you that an update of the portal server on the server system must be accomplished.

This principle ensures that the update for each portal server must be accomplished before updating a Portal Manager on a client system. In order to update the portal server, start the Portal Manager installed on the server system.

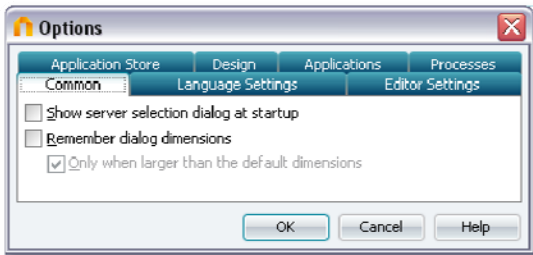
If you do not wish to install the updates immediately, simply click  *OK*. The next time you start a software update from the *Extras* menu, you will be again offered the ability to install them, without requiring you to download the update packages a second time.

After completing the download, the installation can be started in the following window. A connection to the internet will no longer be necessary and can be closed.

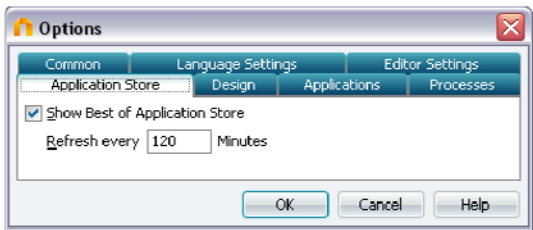
-  Please note for installations on a Linux headless server:
The installer must be executed with the system property `java.awt.headless=true`. To do this, this option must be added to the file `/opt/intrexx/bin/linux/updinstall.sh` in the following way:

```
# now start the java vm
jre/linux/bin/java -cp $lc_classpath -
Djava.awt.headless=true.
```

4.3.3. Options



On the *General* tab, it can be set that the dialog to select a server will be shown each time the Portal Manager is started. In addition, you have the ability to retain the sizes of dialogs when they differ from the standard dimensions. Also, the setting *Only if larger than the standard dimension* can be set here.



Here you can set the display of the *Application Store* in the *Portals* module. In addition, you have the ability to enter the refresh rate in minutes.

4.4. Help Menu

In this menu, you will find the in-program help for Intrexx. The handbooks are also available here.