

# **Intrexx Professional**

# **Intrexx Compact**

RELEASE 5



Setup


# Contents



<b>1. System Requirements .....</b>	<b>4</b>
1.1. Portal Server .....	4
1.2. Portal Manager .....	4
1.3. User .....	5
1.4. Office Integration.....	5
<b>2. Setup .....</b>	<b>5</b>
2.1. Installation Directory .....	7
2.2. Packages to Install .....	8
2.3. Portal Server Configuration .....	9
2.4. Creating the Sample Portal .....	9
2.5. Apache Derby Configuration.....	9
2.6. Oracle Driver Setup.....	10
2.7. Apache Tomcat Configuration.....	10
2.8. Software Update Configuration .....	10
2.9. Updating an older Version of Intrexx .....	11
<b>3. PostgreSQL .....</b>	<b>12</b>
3.1. Installation under Linux.....	12
3.2. Configuration under Linux.....	12
<b>4. Configuration of Microsoft Windows 2008 Server .....</b>	<b>14</b>
4.1. Optional Settings .....	16
4.1.1. Settings for file up- and download .....	16
4.1.2. Browser access of the Portal.....	17
4.2. Windows Server 2008 Release 2: Permissions.....	18
<b>5. Configuration of Microsoft Windows 2003 Server .....</b>	<b>18</b>
5.1. IIS / Web Service Extensions .....	18
5.2. IIS / Virtual Directory Properties / Configuration.....	19
5.3. Entries in File C:\WINDOWS\system32\inetsrv\metabase.xml.....	19
<b>6. Service Console .....</b>	<b>20</b>
<b>7. Uninstall.....</b>	<b>21</b>






## Copyright

This document is in all its parts protected by copyright. All rights are reserved, especially the right of translation, presentation, reproduction, and duplication. Regardless of the accuracy of the text, images, and programs neither author, publisher or translator may take judicial or other responsibility for possible errors and their consequences. The conventional names, trade names, product designations, etc. reproduced in this work may, even without special designation, be trademarks, and as such may be subject to legal regulations.



## Writing Conventions

In this handbook, text passages will be displayed in *italics* when they refer to settings in the displayed dialogs. Menu items that are available in context menus can, in addition, always be selected from the main menu. Main menu items will not be described if they are not available in the context menu. A description of the general main menu items can be found in the  *Portals* handbook. Programming code in the text will be displayed in the `Courier` font. Context menus can be opened by clicking with the right mouse button on the described element.

In the following, `<intrexx>` refers to your Intrexx installation path; under Windows, for example, this is usually  `c:\intrexx\`. On Linux, the normal install path is  `/opt/intrexx/`. The following symbols will be used for designation of special kinds of information:

-  Information
-  References to an Intrexx handbook
-  Directories
-  URLs
-  Click on buttons

## Background Knowledge

For this handbook, you require no special training. You can find helpful information in the Intrexx handbooks  *Portals* and  *Start*.

# 1. System Requirements

In order to use Intrexx, the following minimum requirements must be fulfilled:

## 1.1. Portal Server

### **Hardware**

Pentium III compatible CPU,  
minimum 2 GHz,  
or CPU with AMD64/EM64T extensions,  
SUN Sparc,  
additional platforms upon request.

At least 2 GB RAM,  
minimum 500 MB free hard drive space.

### **Operating System**

Microsoft Windows Server 2000,  
Server 2003, Server 2008  
or Linux for x86 and/or  
AMD64/EM64T processors,  
SUN Solaris,  
additional operating systems upon request.

### **Webserver**

Tomcat or  
Microsoft Internet Information Server (IIS)

### **Database**

Oracle from Version 9,  
Oracle 10g Express Edition,  
PostgreSQL from Version 8.3,  
Microsoft SQL Server from Version 2000,  
IBM DB2,  
Apache Derby

## 1.2. Portal Manager

### **Hardware**

Pentium III compatible CPU,  
minimum 2 GHz,  
or CPU with AMD64/EM64T extensions,  
SUN Sparc,  
additional platforms upon request,  
minimum 1 GB RAM,  
minimum 200 MB free hard drive space

### **Operating System**

Microsoft Windows Server 2000, Server 2003,  
Server 2008, XP, Vista, 7  
or Linux for x86  
and/or AMD64/EM64T processors,  
SUN Solaris,  
Mac OS X from Version 10.5,  
additional operating systems upon request.

## 1.3. User

### **Hardware**

Platform-independent

### **Default Web Browser**

Microsoft Internet Explorer Version 6 (not all possibilities in CSS available),  
Microsoft Internet Explorer Version 7,  
Microsoft Internet Explorer Version 8,  
Mozilla Firefox from Version 1.0.6, recommended from Version 3.5,  
Konqueror from Version 4,  
Opera from Version 9,  
Google Chrome,  
Apple Safari,  
No browser plugins required (Java, Flash, etc.)

## 1.4. Office Integration

Intrexx from version 4.5,  
Microsoft Office from version 2003,  
Microsoft .NET Framework 3.5,  
Microsoft Windows Server 2003, Server 2008,  
XP, Vista, 7.

## 2. Setup

Insert the installation DVD for Intrexx into the DVD drive of the computer. The setup program should start automatically on Microsoft Windows systems. If this is not the case, please run the file *Setup.exe* on the DVD.

For Linux systems, switch to the console or open a terminal window and switch to the *root* user. In this document, it will be assumed that the mount point for the DVD is */media/dvd*. This may vary by system.

```
# su -
```

Mount the DVD if your operating system does not do so automatically.

```
# mount /media/dvd
```

Go to the DVD-ROM directory:

```
# cd /media/dvd
```

On systems with a running X Server, you can now start the graphical Setup:

```
# ./setup.sh
```

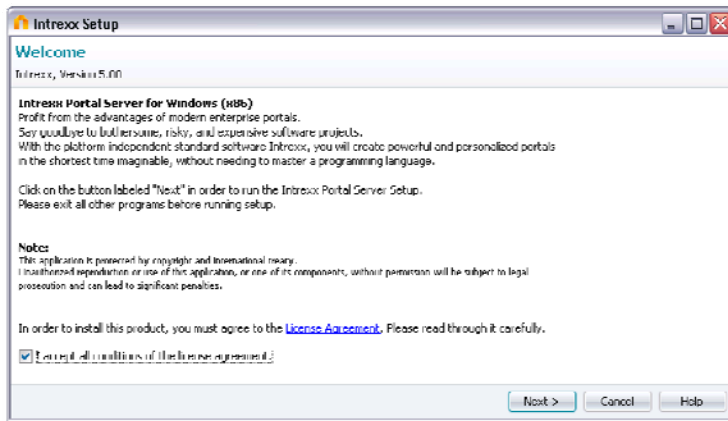
**If you do not run an X Server, you will be required to run the console setup:**

```
# ./serversetup.sh
```

The console setup always uses the `/opt/intrexx` directory for the full installation as default. If you wish to change the installation directory, please use:

```
# ./serversetup.sh setup.dest.path=<Installation directory>
```

The rest of the installation is identical on both Linux and Windows platforms.



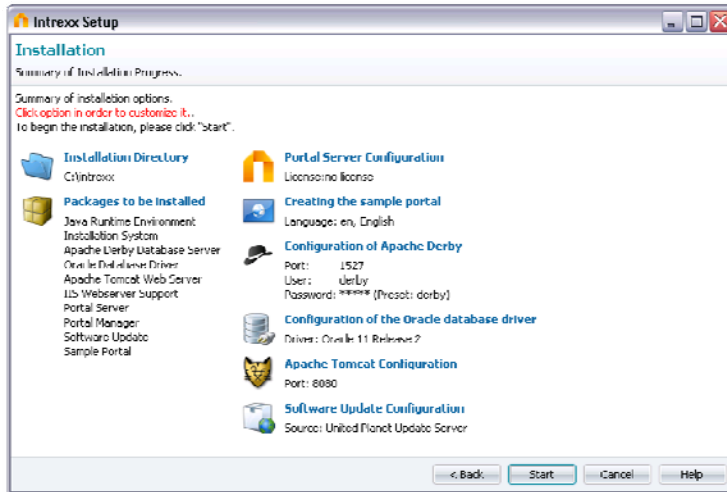
Read and confirm the license conditions and then click  **Next**.



Here you have the option to either select a *Complete installation* with the Intrexx Portal Server and Manager, IIS Connector, the Apache Derby Database and various database drivers, or only install the *Intrexx Portal Manager*.

In order to run Intrexx for the first time, the complete installation is required. If portals on other systems are to be administered, you can install the *Intrexx Portal Manager* on these other systems afterward.

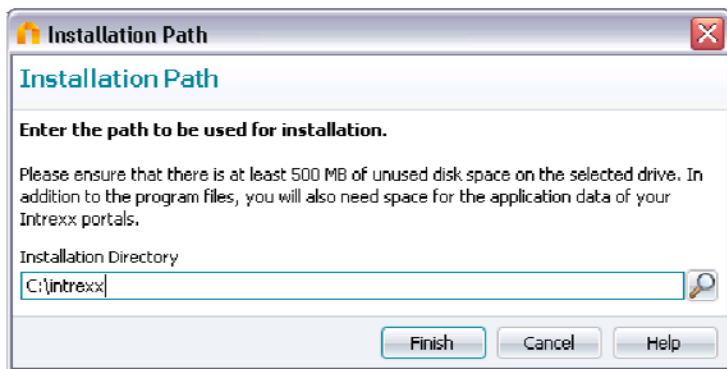
Close all other opened programs, then click  **Next**.





Here you can see the individual components and settings for a standard installation. If you want to change individual settings or exclude components from the setup, simply click on the corresponding place in this overview. In the dialogs that then appear, you can apply these changes.

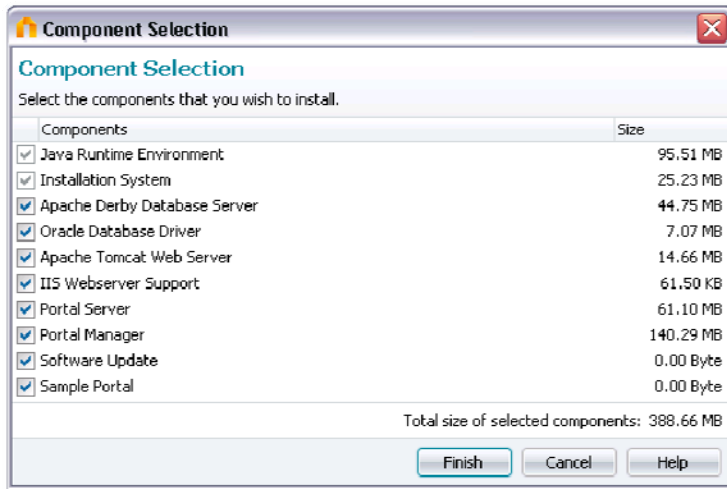
## 2.1. Installation Directory

Here you have the ability to change the installation directory.



Simply enter your desired installation path here or select it by clicking on  *Browse*. Next, click on  *Finish*.

## 2.2. Packages to Install



The following components are required for the full functionality of the Intrexx Portal Server and cannot be excluded from the installation:

- **Java Runtime Environment**
- **Installation System**

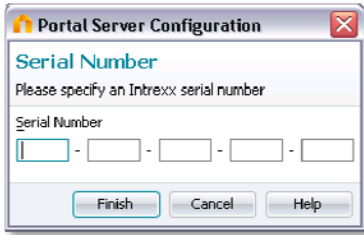
You may exclude the following packets from the installation:


- **Apache Derby Database Server**
- **Oracle Database Driver**
- **Apache Tomcat Webserver**
- **IIS Webserver Support**
- **Portal Manager**
- **Software Update**
- **Create Sample Portal**

With *IIS Webserver Support*, a connection to the Microsoft Internet Information Server will be prepared. The assignment will take place only upon configuration of a created portal. Please note that the Microsoft Internet Information Server must be installed and activated on the server system.

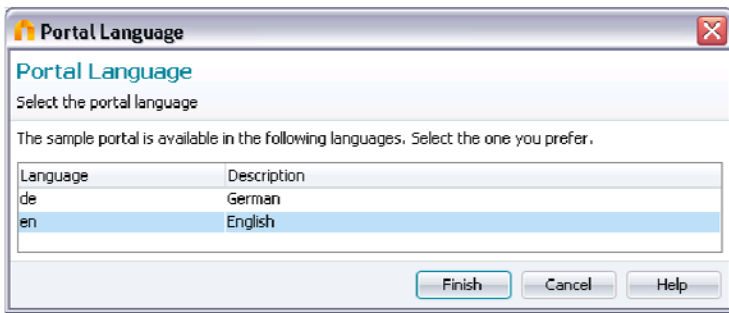
If you select or deselect individual components, the current storage space requirements will be shown in the lower right.


## 2.3. Portal Server Configuration



You can enter your Intrexx license here directly. The licensing can also be accomplished at a later point in the Portal Manager (  *Portals*).

## 2.4. Creating the Sample Portal




Here you have the ability to create a sample portal with data and sample applications. For this to occur, the Apache Derby database server must be included in the application. The sample portal can also be created via the Intrexx Portal Manager later, if you want to use other database types (  *Portals*). Select the desired portal language here.

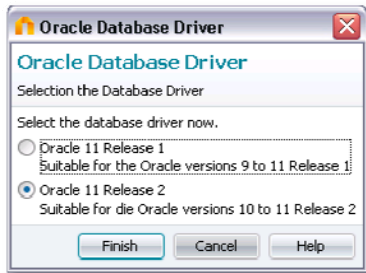
## 2.5. Apache Derby Configuration

Apache Derby can be implemented with Intrexx for production purposes. Derby falls under the Apache License ([www.apache.org/licenses/LICENSE-2.0.txt](http://www.apache.org/licenses/LICENSE-2.0.txt)).



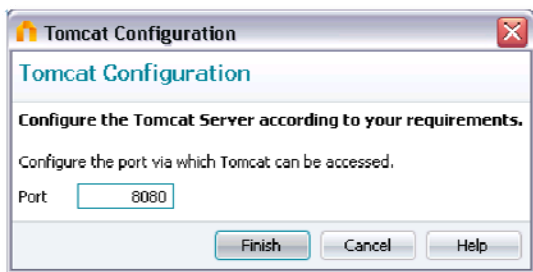
In *Network port* you will find the port under which the Apache Derby database server can be reached. If required, the port can be changed here. Additionally, you can set up a *User* and a *Password* for the administration of the Apache Derby database server. To continue, click  *Finish*.

## 2.6. Oracle Driver Setup



Select the appropriate driver here. With the option for *Oracle 11 Release 1*, drivers for versions 9 to 11 Release 1 will be installed; with the option for *Oracle 11 Release 2*, drivers for versions 10 to 11 Release 2 will be installed.

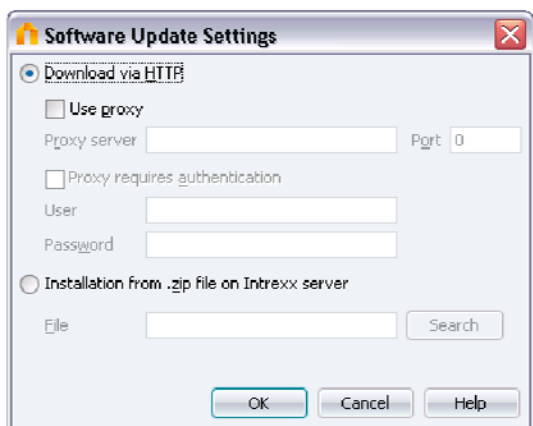
## 2.7. Apache Tomcat Configuration



The default setting for the Tomcat Server is port 8080. You may retain this setting. If a proxy server is installed on the Intrexx Portal Server, you should use a different port (such as port 8081). Proxy servers usually occupy port 8080.

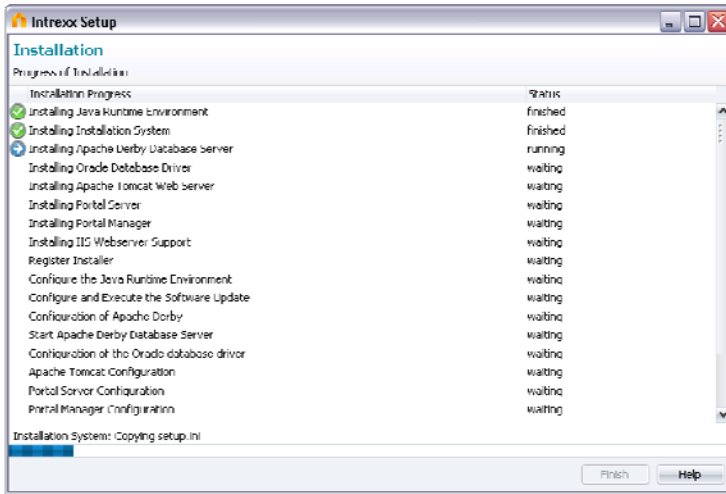
## 2.8. Software Update Configuration

The software update can, if it is excluded from the installation, also be activated at a later time via the Intrexx Portal Manager.



You can find information on the settings in this dialog in the handbook on [Portals](#).


Click on [Finish](#), and in the following dialog on [Start](#), to begin the installation.



Here you will be informed of the progress of installation.

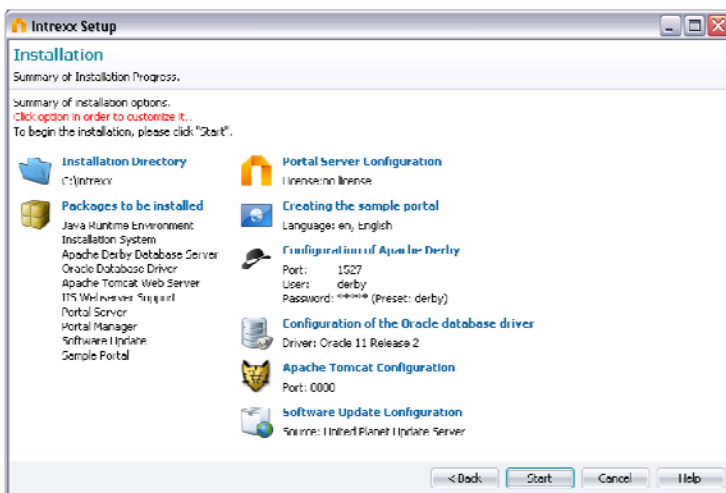



After the successful setup you have the ability to start the Intrexx Portal Manager here or to show the installation log file, which is documenting the process of the installation.

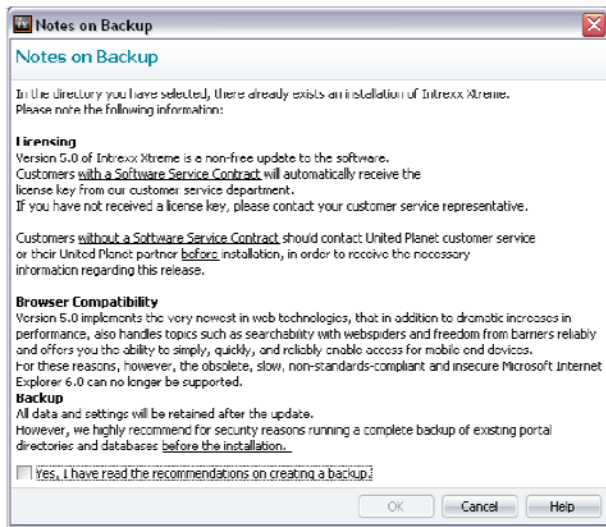
Complete the installation by clicking  *Finish*. After the installation is complete, you will find the Service Console (see chapter on *Service Console*) in the *Intrexx Portal Server* program group.


## 2.9. Updating an older Version of Intrexx

When updating, enter the directory here in which the earlier version of the Intrexx Portal Server has been installed.



When you click  *Start* and an install of Intrexx already exists in the specified directory, the following dialog will be shown:




Read and confirm the *Recommendations for creation of a backup* and click on  *OK*. You can then continue the installation as usual. Your data and settings will be retained upon update.

Portals, which were created in an older version, will be patched. Here you can watch the progress of the portal patches.

### 3. PostgreSQL

#### 3.1. Installation under Linux

The PostgreSQL database is a component part of every common Linux distribution (SuSE, Redhat (Fedora), Mandrake, Debian, and Gentoo). It must be installed afterwards with their respective system tools. With SuSE, you will use (for example) *yast* or *yast2*.

 Please install only PostgreSQL version 8.3 or higher. PostgreSQL is contained on the installation DVD for Intrexx and can be used in Windows. On Linux, it is recommended to use the version corresponding to the installed distribution.

After a successful installation, the database must be configured.

#### 3.2. Configuration under Linux

First, an additional user must be created. This will be used by Intrexx to create the database. Log on to the PostgreSQL database with the following command:

```
psql -U postgres template1  
or  
psql -U pgsq1 template1
```

The following message will appear:

```
Welcome to psql VERSION, the PostgreSQL interactive terminal.
Type:  \copyright for distribution terms
       \h for help with SQL commands
       \? for help on internal slash commands
       \g or terminate with semicolon to execute query
       \q to quit

template1=#
```

The user for Intrexx can now be created with this command:

```
CREATE USER intrexx PASSWORD 'password' createdb;
```

Leave the psql-Terminal with the command `\q`.

Now a password for the postgres- and/or pgsq- user can be entered. To do this, use the following command:

```
ALTER USER postgres PASSWORD 'password';
```

or

```
ALTER USER pgsq PASSWORD 'password';
```

Leave the psql-Terminal with the command `\q`.

The PostgreSQL database must be configured in such a way as to allow it to be contacted via TCP/IP. For this the file *postgresql.conf* must be edited. Since the file (depending on the Linux distribution) can be found in various directories, search with the following command for the file:

```
find / -name 'postgresql.conf'
```

If you have found the file, open it with a text editor and change the following values:

```
tcpip_socket = true
port = 5432
```

Save the changes and then restart the PostgreSQL service with the following command:


```
/etc/init.d/postgresql restart
```

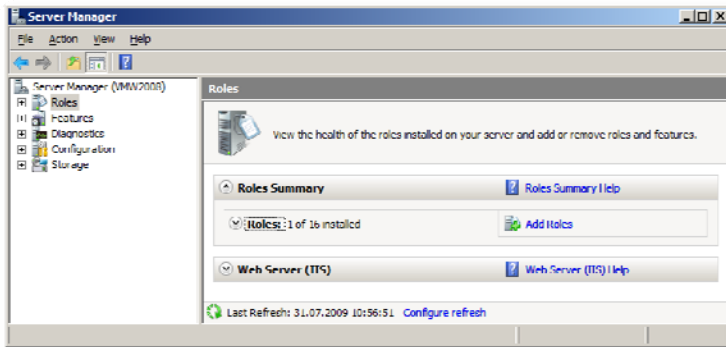
Now enter the PostgreSQL service in the runlevel so that the database will be automatically stopped and restarted when the computer is turned on. The Linux distribution system tools can be used for this. For SuSE, for example, you can use *yast* or *yast2*.



## 4. Configuration of Microsoft Windows 2008 Server

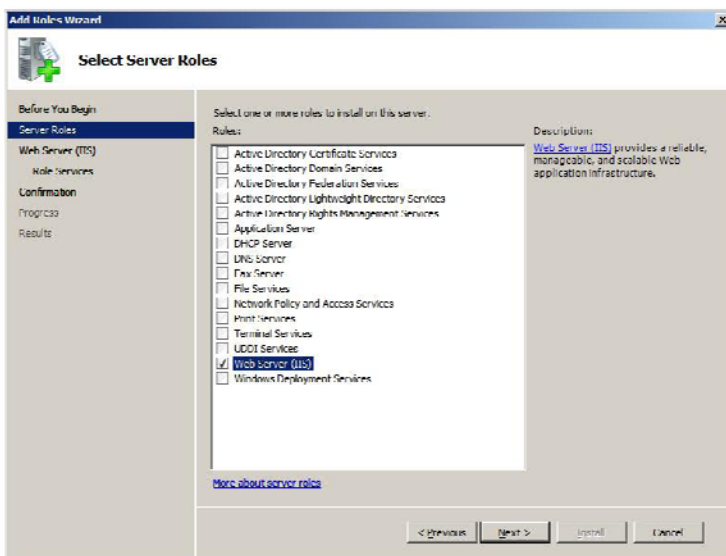
In order to run Intrexx on a Windows Server 2008 it is only necessary to install and configure the Internet Information Server IIS. Once IIS has been installed, please configure it as follows.

Alternatively Tomcat Webserver can be used as Webserver instead of IIS. There is no need to configure the Tomcat Webserver, it must only be selected during the Intrexx setup.

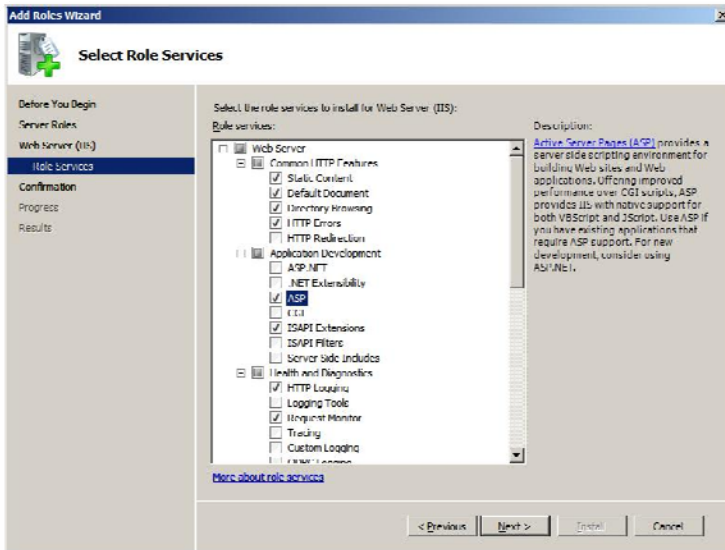
Use the following settings to configure IIS in order to support Intrexx. Open the server manager and click on  *Roles*.



Choose  *Add Roles*. In the following Add Roles Wizard you can select one or more roles to be installed. Select the role *Web Server (IIS)* and click  *Next*.

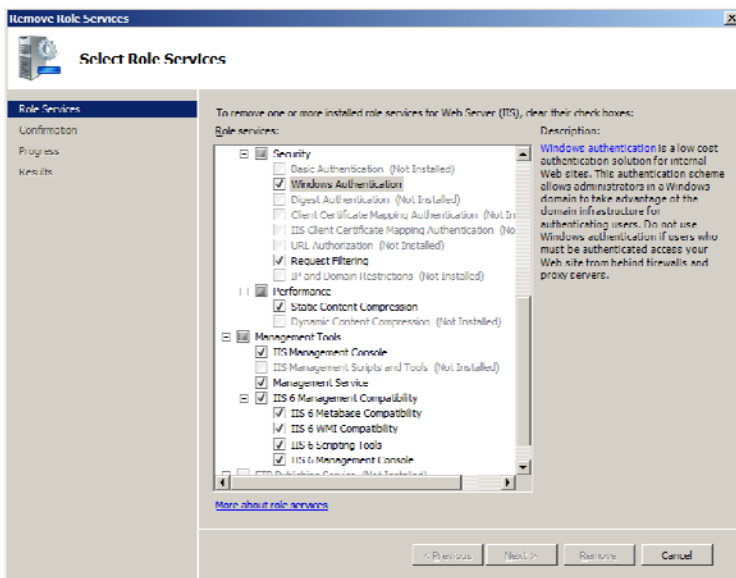



Some services are already selected in the dialogue *select Role services*. You must simply select ASP in the *Application Development* branch. This will automatically select *ISAPI Extension*, too.



In *Security* check *Windows Authentication* if the portal has to be accessible via SingleSignOn in a Windows domain.

Scroll further down to the branch *Management Tools*. Select the option *IIS 6 Management Compatibility*. The sub nodes of this branch are automatically selected.



Click  *Next* in order to confirm the settings.

## 4.1. Optional Settings

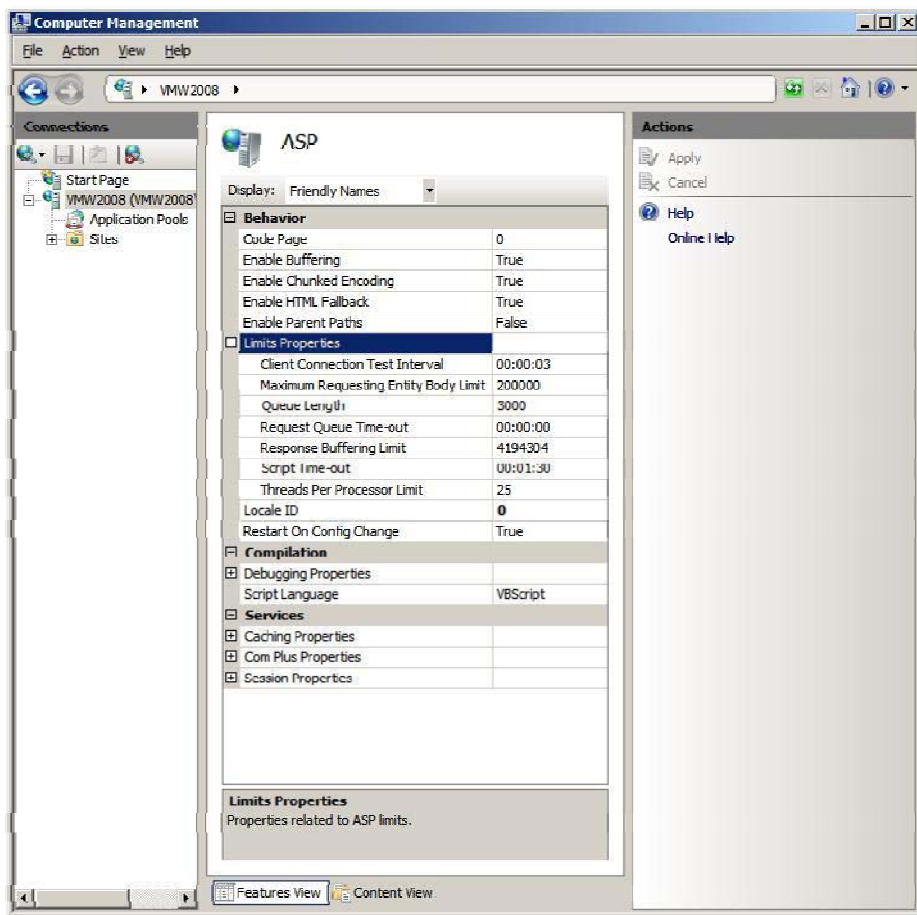
### 4.1.1. Settings for file up- and download

The default settings for IIS allow only smaller files to be up- or downloaded in the web browser. Hence, the limit properties must be adjusted according to the requirements (limits in bytes). Proceed as follows:

Open the computer management. Then open the *server manager / roles*. In the *IIS Manager* open *ASP* and edit the *Limit Properties*:

*Upload:*        *Maximum Requesting Entity Body Limit*

*Download:*    *Response Buffering Limit*



The settings take effect without restarting the www service.

In addition to these settings, which enable file transfers up to a size of approx. 60MB, further settings can be done to enable even larger file transfers. According to the value set here in the ASP limit properties you can set this value also in the "applicationHost.config". Open the following folder as Administrator:

 c:\windows\system32\inetsrv


Run the following syntax to set the value to e.g. 100MB:

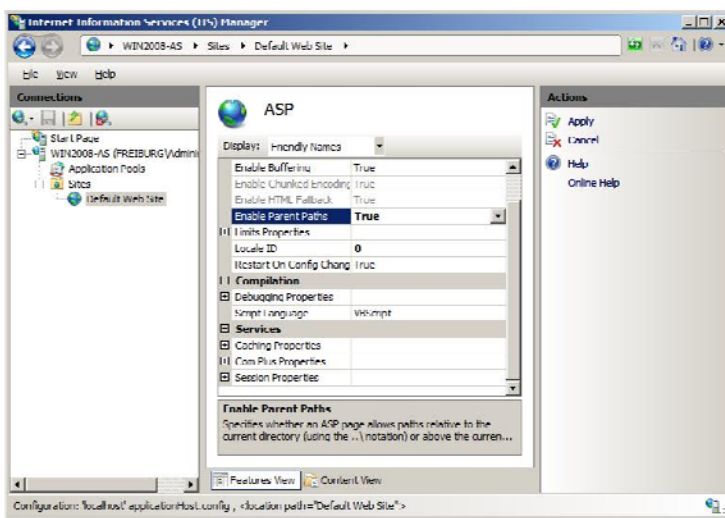
```
Appcmd set config /section:requestfiltering  
/requestlimits.maxallowedcontentlength:10000000
```

## 4.1.2. Browser access of the Portal


In order to access the portal without specification of virtual directory under `http://servername` the physical path of the default web site must point to `<intrexx>\org\portalname\external\htmlroot`.

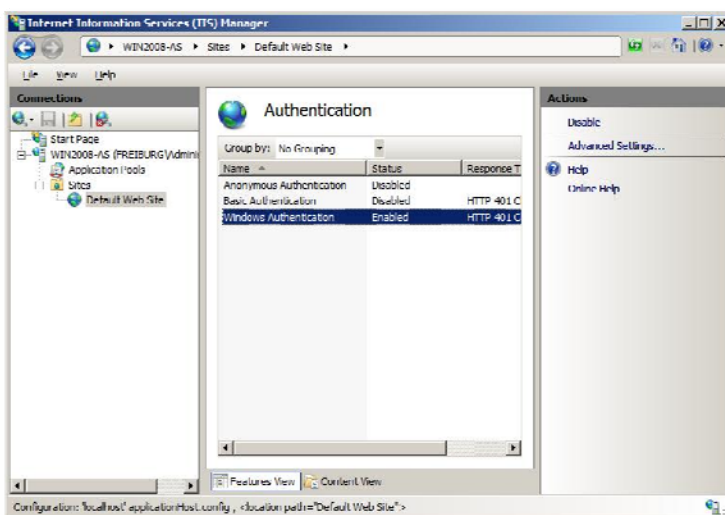
Additionally the option *parent paths* must be enabled in the ASP settings.

 In order to prevent system failures in the IT environment such customizations must only be applied with the assistance and advise of the system administrator.



If the portal shall be accessible with integrated Windows authentication, Windows authentication must be enabled and anonymous authentication must be disabled for the default website.

 Depending on the IT environment those options might be default settings.



## 4.2. Windows Server 2008 Release 2: Permissions

Missing user permissions for the Intrexx portal's root folder result in a HTTP 500.19 error when trying to access the portal in a web browser. Therefore make sure to grant permissions for the following folders:

- 📁 <intrexx>\bin\windows\x86 or <intrexx>\bin\windows\amd64 respectively
- 📁 <intrexx>\org\<portalname>\external\htmlroot
- 📁 <intrexx>\org\<portalname>\internal\files

to the following user and groups:

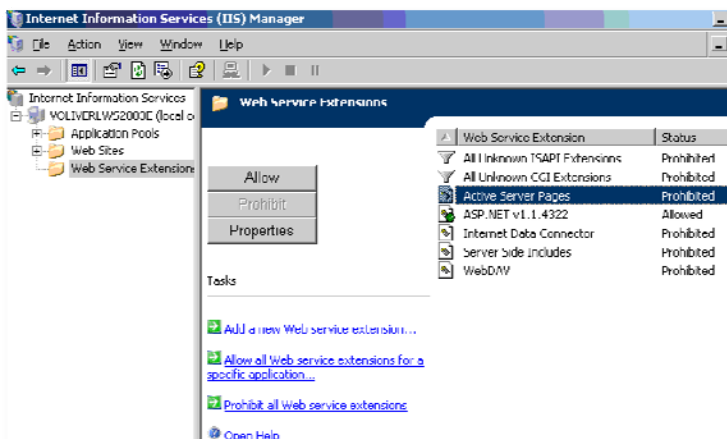
<servername>\IUSR  
<servername>\IIS\_IUSRs

## 5. Configuration of Microsoft Windows 2003 Server

In order to use Intrexx on Microsoft Windows 2003 Server systems, please first install Service Pack 1. In addition, change the following settings.

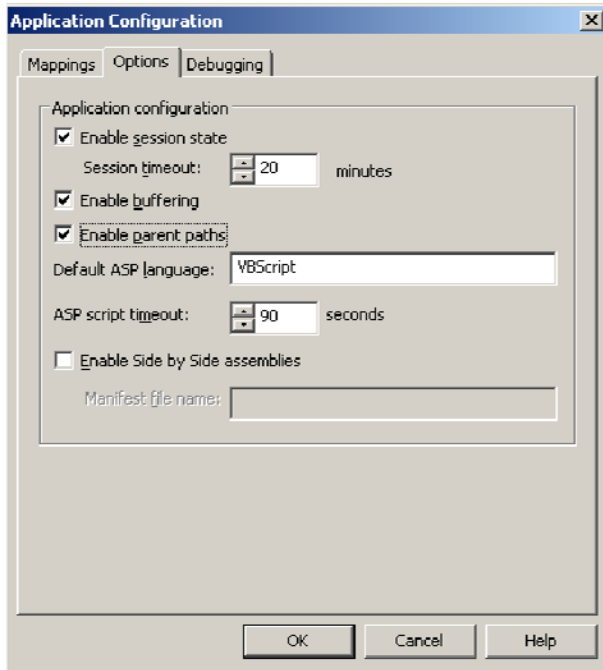
### 5.1. IIS / Web Service Extensions

Here you will set the Web Service extension *Active Server Pages* to *Allow*.



## 5.2. IIS / Virtual Directory Properties / Configuration

Please set the properties here as follows:




You can reach these settings by clicking on *Websites* with the right mouse button and then selecting *Properties*. Select the *Base Directory* tab here and then the *Configuration* item. Next, click the *Options* tab.

## 5.3. Entries in File C:\WINDOWS\system32\inetsrv\metabase.xml

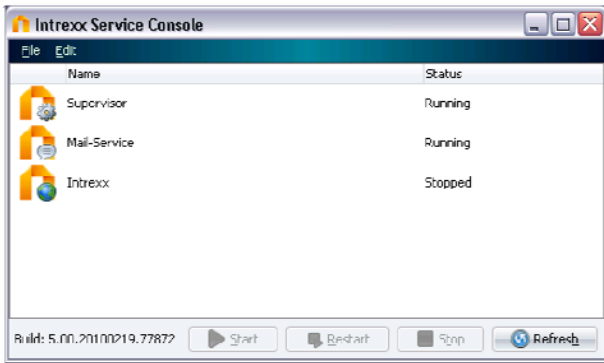


Please only change *metabase.xml* in the ways recommended by Microsoft. A description of these methods can be found at

 <http://support.microsoft.com/kb/327659/en-us>. United Planet takes no responsibility for errors resulting from incorrect entries to *metabase.xml*.

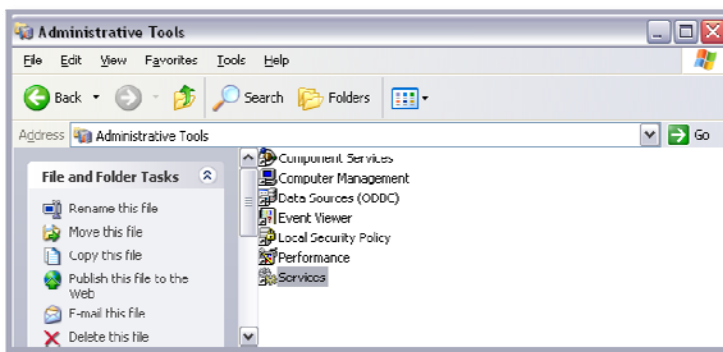
Change the value of the entry *AspMaxRequestEntityAllowed* for uploads (default value: 204800 bytes) to a larger number, such as 6000000. This corresponds to an upload size restriction of about 6 MB. Additionally, change the value of the entry *AspBufferingLimit* for downloads (default value: 4194304) to 14194304. The original value corresponds to a limit of 4.19 MB. Our suggested value increases the value to 14.19 MB. If you wish to download larger documents, please increase this value accordingly. Please note that a value that is set too low for upload operations in Intrexx can result in the error, among others, that uploads will not be run to completion. This can create empty data sets without file contents, for example. After changing *Metabase.xml*, the WWW-Publishing Service must be restarted in order for the changes to take effect.

## 6. Service Console

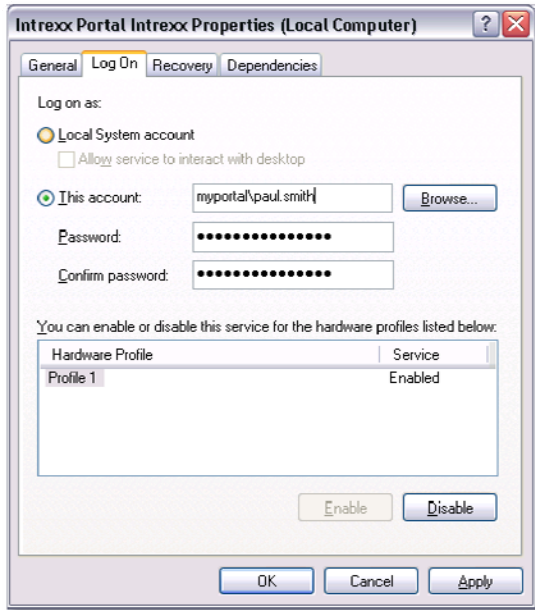


The service console shows running services. The services will be automatically started upon starting the server system. Depending on computer speed and the number of installed portals, this process may take several minutes.

Each server process (such as the portal process) possesses its own service, which will be managed by the corresponding operations in place on the operating system. Under Windows, for example, this is the Service Manager. With this, individual portals can be removed from the automatic start process, or controlled with individual access permissions. You can access these services from Administrative Tools in the Control Panel on Windows platforms.



Open the list of services. The Intrexx services are entered here. You may start and stop, or switch every service to manual start from the context menu. An additional change to the user account for a service can be accomplished directly from the system settings. Double-clicking on the service will open up a dialog box which you can use to change account details.





Change the user account here in order to enable access to external data sources like *Data transfer* and *FileWalker*. Individual services can be started or stopped manually from the Service Console using the buttons at the bottom.

The *Supervisor* service must run at all times in order to ensure full functionality of Intrex. If Apache Tomcat has been selected in setup as the web server, it will be displayed below the first two services. For access to the portal within the browser, this service must be running. All portals that are installed on the Portal Server will be shown in the Service Console. The services for portals which are currently not needed can be halted by the Service Console in order to save resources.

## 7. Uninstall

*Intrex* can be uninstalled from Windows systems from the Control Panel (Add or Remove Programs). On Linux systems, *Intrex* will be uninstalled with *uninstall.sh*.

You can find additional information on Intrex in the handbooks  *Start* and  *Portals*.